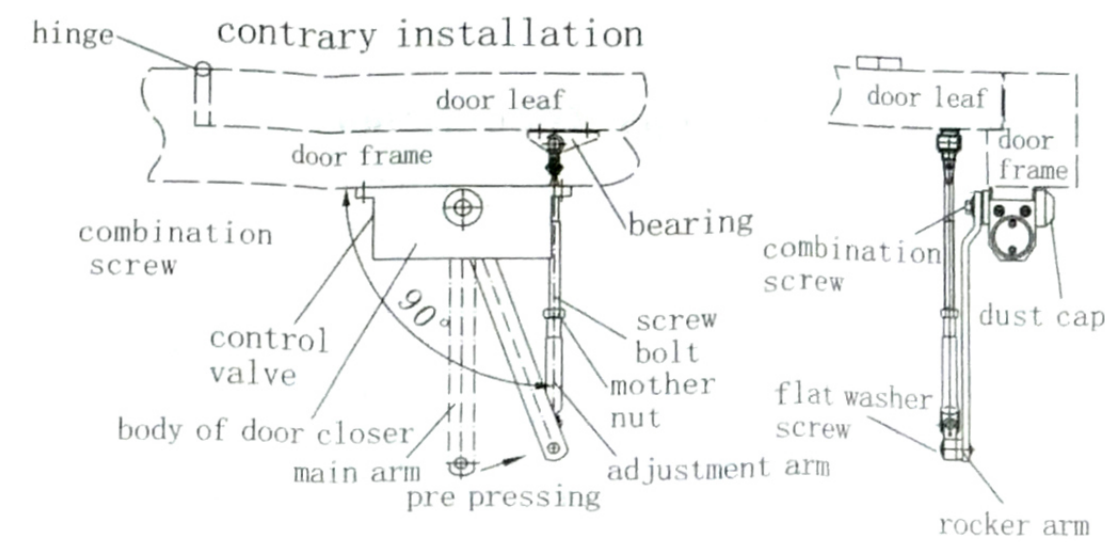


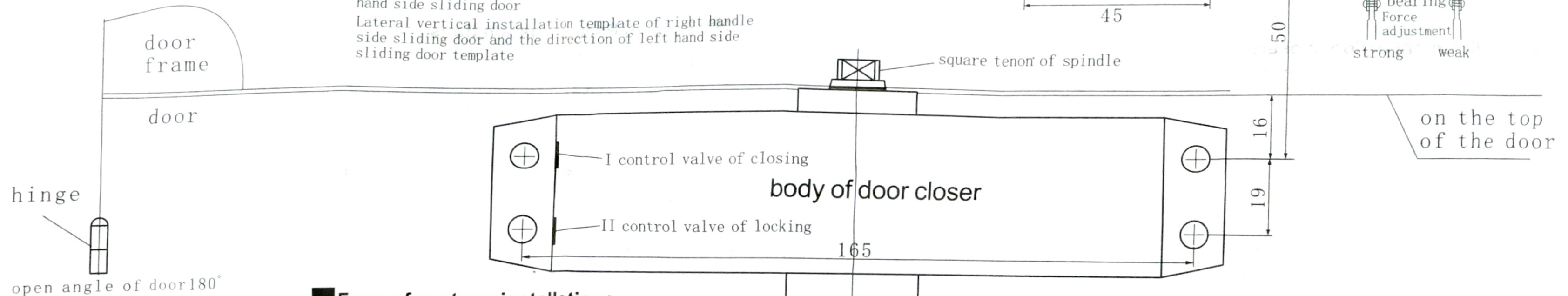
Vertical installation steps of door closers

1. According to the needs of the installation, stick the corresponding template installation on the door and door frame.
2. Use the electric drill to drill the hole for screw according to the installation template (wooden door: D4; Metal Door: D4.2, M5 screw)
3. Unload the main arm and adjustment arm, make them perpendicularly to the body of door closers, install them on the square tenon of spindle, and tightening them with combination screw.
4. According to the mounting holes, installed the body and adjustment arm bearing on the door or door frame respectively, and tightening up
5. Install the main arm of a constant pressure angle and adjustments arm which is perpendicular to the door together, and tightening up with flat washer and screw (you can adjust the length of screw bolt to complete the assembling), then rotate the mother nut of the screw bolt
6. Put the dust cap on the other end of spingde



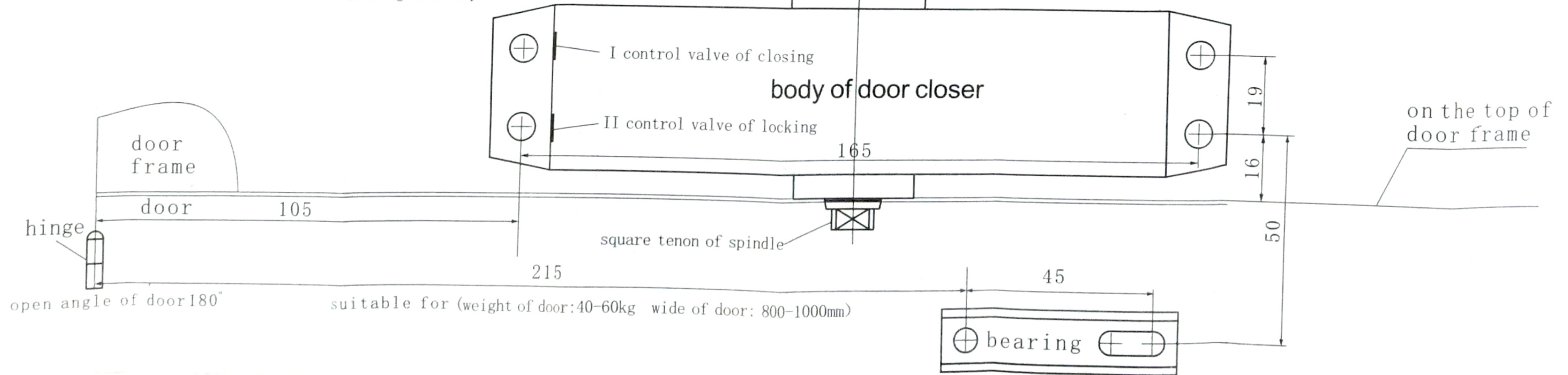
Form of Standard installation:

Lateral vertical installation template of the left hand side sliding door
Lateral vertical installation template of right handle side sliding door and the direction of left hand side sliding door template



Form of contrary installation:

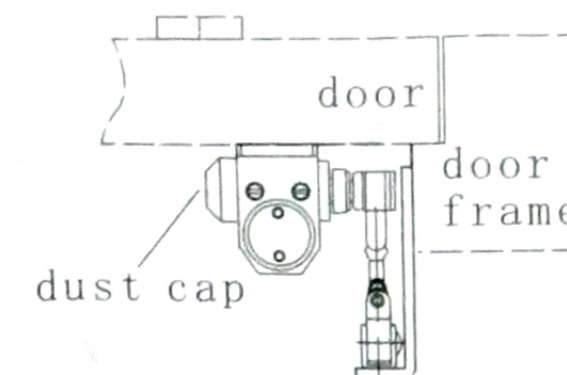
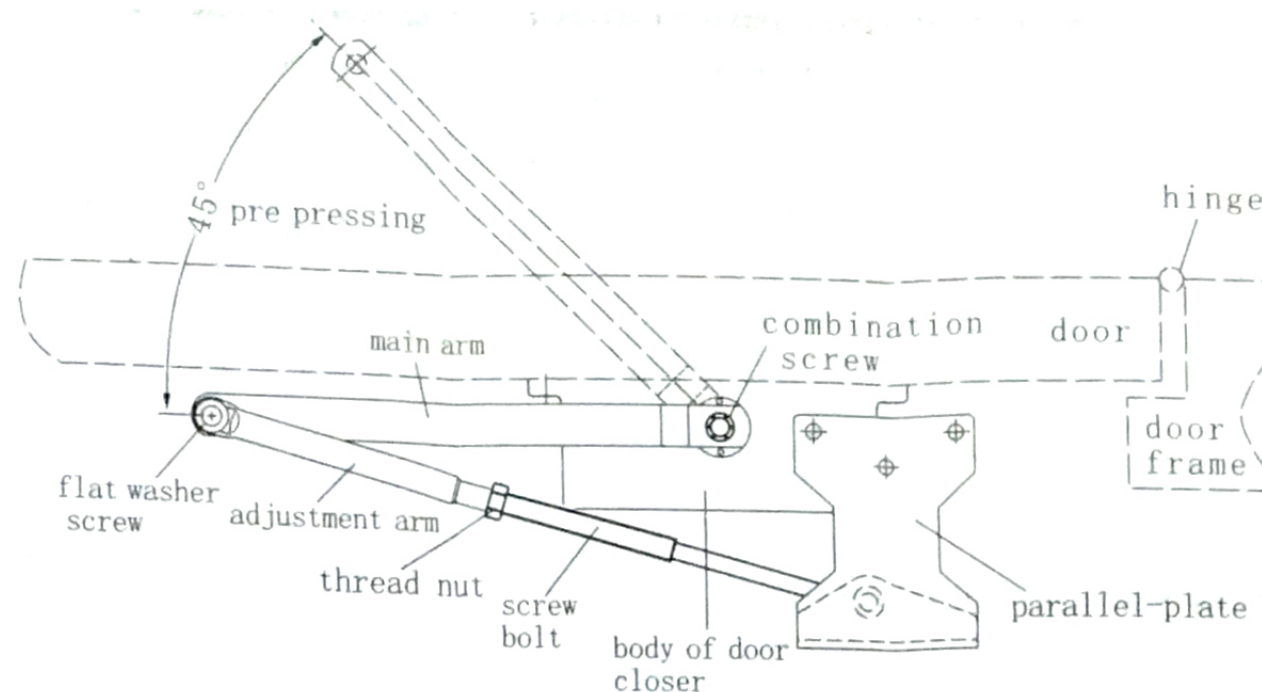
Lateral vertical installation template of the left hand side sliding door
Lateral vertical installation template of right hand side sliding door and the direction of left hand side sliding door template



suitable for (weight of door: 40-60kg wide of door: 800-1000mm)

Parallel installation steps of door closers

1. Fold the parallel template installation chart into 90 degrees according to the broken line, then stick it on the door frame and door.
2. Use the electric drill to drill the hole for screw according to the installation template (wooden door: D4, Metal Door: D4.2, M5 screw).
3. According to drilled mounting holes, installed the body and parallel plate on the door or door frame respectively, and tightening up.
4. Remove the flat washer and screw, after turn the square tenon of spindle into 45 degrees, install the main arm on the square tenon of spindle, then install the bearing on the parallel plate, and tightening up with screw.
5. Adjust the length of screw, and make the main arm parallel to the main body of door closers; Then set the screw sleeve on the shaft core of parallel plate, and tightening up with combination screw.
6. Put the dust cap on the other end of spindle.



The speed adjustment of door closers

1. Speed 1 is adjustment valve for closing the door, speed 2 is adjustment valve for locking the door.
2. Speed regulating valve counterclockwise to growth, speed regulating valve clockwise to slow down.



Form of Parallel installations

Lateral vertical installation of right hand side sliding door

Lateral vertical Installation template of left hand side sliding door and the direction of right hand side sliding door template

Attention:

1. It is forbidden to throw the shaft side tenon before install the door closer
2. Please don't beat the square tenon of spindle when install the rocker arm.
3. The door closer will automatic shut down the door, so it is strictly prohibited to forced shut down.
4. Please tighten up every screw of each part every half month.
5. Pay attention to adjust the speed of every summer and winter
6. It is forbidden to turn the speed regulation valve out of the body while making the debugging

