



Plate solid door (Door: 7-1)

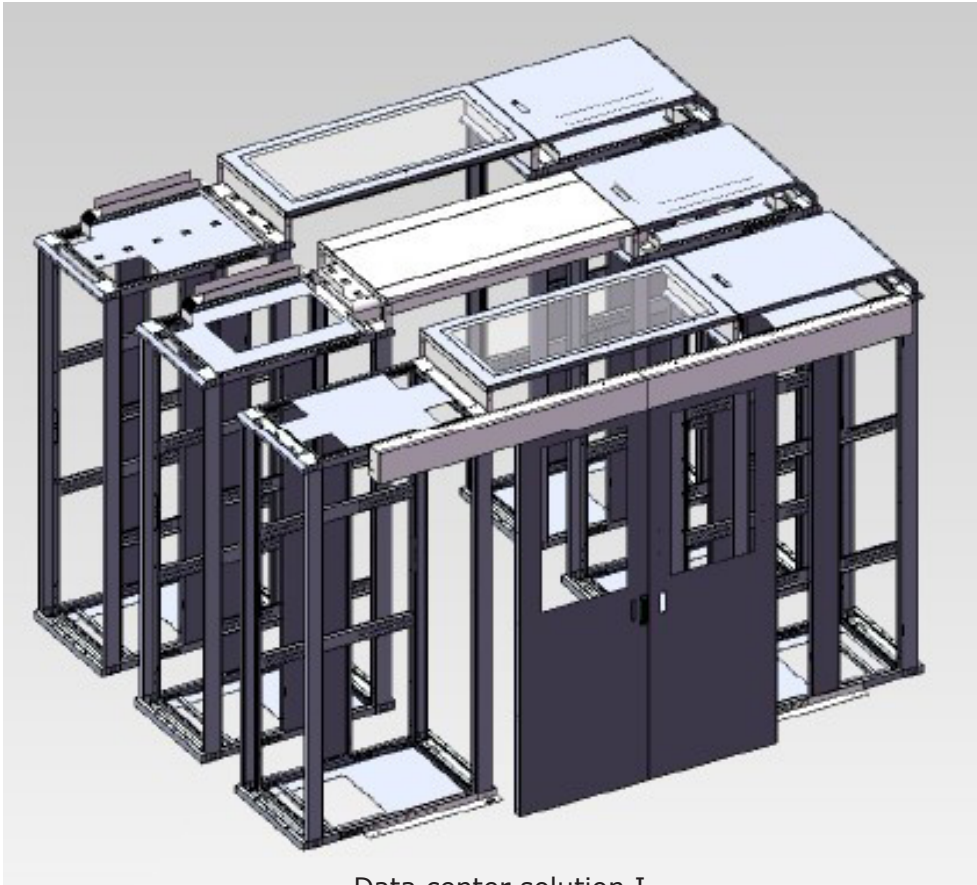
Specifications:

- Cabinets: compatible with 19" International Standards, ETSI, and other standards.
- Dimensions of cabinets: different dimensions for option, standard dimension of cabinets are 800*1000*42U.
- Doors for cabinets: different lockable doors for option.
- Cooling system: 4-way fan unit and 6-way fan unit for option, order separately.
- Mounting rails of cabinets: zinc plated.
- Power solution: different PDUs for option, vertical installation or 19" installation, order separately.
- Cable managements: available at top and bottom of cabinets.
- Main entry doors: different main entry doors with different locks for option. Our standard main entry door is top half is toughened glass door, bottom half is solid plate door.
- Air conditioner and fire alarm system: optional.
- Digital lock: main entry door is with digital lock for security.



Perforated door (Door: 6-5)

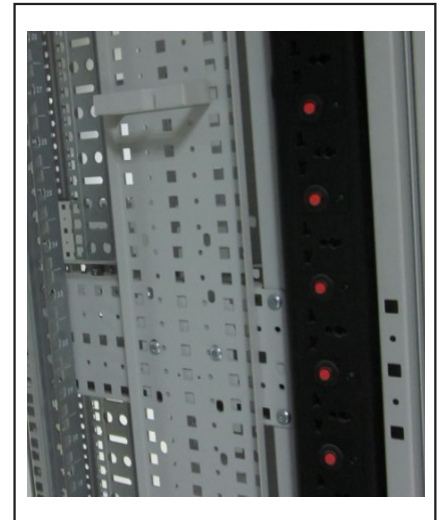
Structure of data center



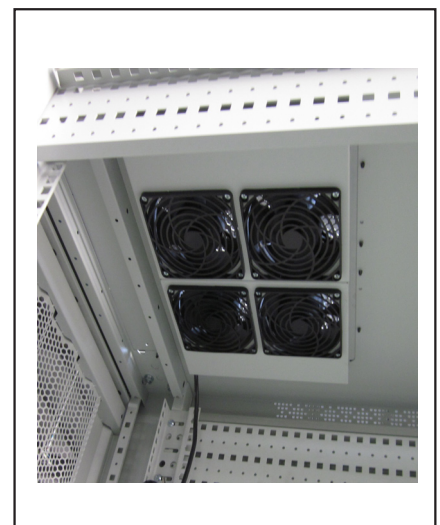
Data center solution I



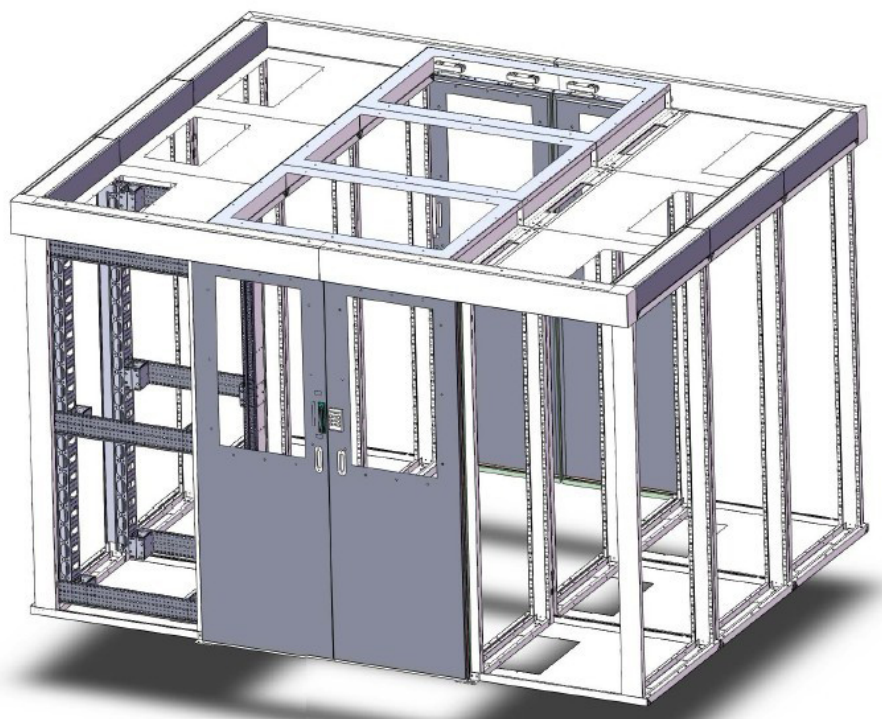
Dust-proof brush for entry door



Power solution



Cooling system



Data center solution II