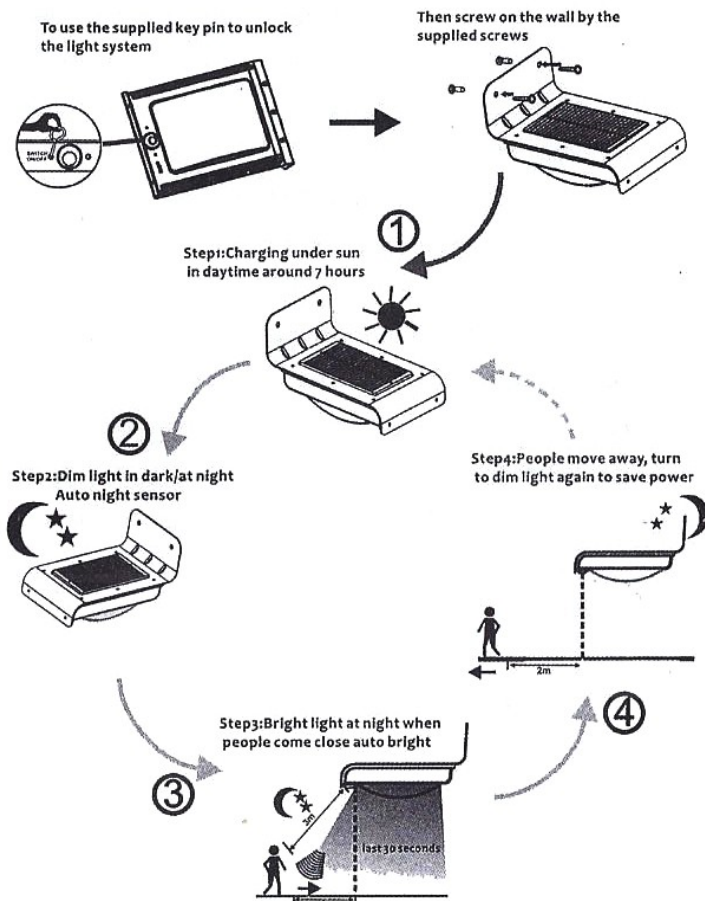


- ① Expansion pillar-hinge
- ② Hole
- ③ Screw
- ④ Solar panel

Electrical Characteristics:

1. Solar panel: 0.55W, 17% efficiency
2. Li-ion battery: 3.7V 800mAh
3. Switch Pin: turn on/off the light by hand
4. LED: 16pcs, SMD 3528, 1 Watt, 100Lumens
5. Lighting mode: Dark/DIM/bright,
DIM: weak lighting for saving power when no motion
Bright: motion activate for lighting when people walk near
6. Protect function: Over charging, over discharging, over current, short circuit
7. Advantage for electronic:
 - a) Constant voltage 4.2V charging type
 - b) Input current limited
 - c) Output current limited
 - d) Backflow current proof for solar cell
 - e) High efficiency
 - f) Famous brand component: MURATA, PANASONIC, ST, TOSHIBA, ETC
8. Stainless Material: ABS+aluminum (sand blasting)

Working process instructions



Operation Instructions:

1. Unlock and activate the device

The internal battery is locked from factory for safety shipment, so users have to use supplied Key pin to click the "on/off" socket and unlock the battery and lighting system.

2. How to Install the device?

Please use the supplied Expansion pillar-hinge and screws to mount the device on Pole or wall anywhere outside you want for lighting.

3. Charging via solar panel:

Please install the unit face south and make sure the solar panel can get the good sunlight directly without any shelter or glass.

Normally it can be fully charged in one day under ideal bright sunlight.

4. Night sensor function

it will auto turn on Dim light when in darkness or at night, and auto turn off when in daytime or bright area.

5. Dim light mode

In order to save power , It will auto turn on Dim light when no Motion over there, but the brightness also can work as signal light.

6. Bright light mode

When people walk around 2 meters close, it will turn on bright light.