

KWP2000 PLUS ECU Flash Programmer for firmware upgrade and chip tuning

Description:

KWP2000 Plus Interface for ECU flash reading/writing over OBD2 diagnostic socket for a wide range of ECU units.

INCREASE YOUR CAR POWER AND REDUCE FUEL CONSUMPTION REPROGRAMMING ECU! EASY AND SECURE CHIP TUNING

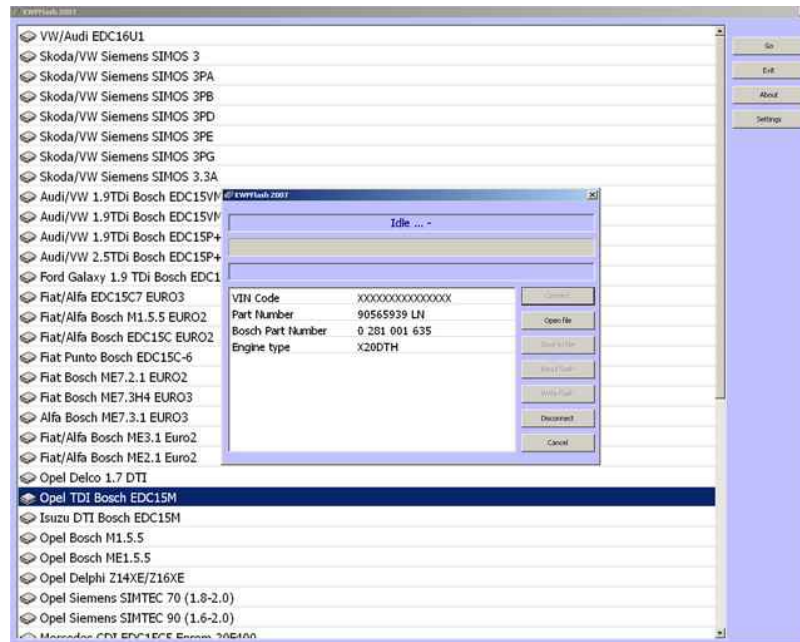
You will need remapped files to reprogram each car you want to increase power to using ECUFlasher and our reprogrammer KWP2000

Only Eeprom flash files can be programmed with KWP 2000 Plus. Double DIL or Double PLCC should be done with external eeprom programmers, because can not be programmed throught your ECU

How it is done:

KWP2000 is used for remapping your car to improve the performance of your car.

No matter the car model the KWP2000 can re-program the information stored in the ECU chip to optimize and improve the power of the car without having to jeopardize fuel consumption and the reliability of the car. The technical term used to describe the car switchboard is ECU- Electronic Control Unit. The ECU uses closed-loop control, a control scheme that monitors outputs of a system to control the inputs to a system, managing the emissions and fuel economy of the engine (as well as a host of other parameters). Gathering data from dozens of different sensors, the ECU knows everything from the coolant temperature to the amount of oxygen in the exhaust. With this data, it performs millions of calculations each second, including looking up values in tables, calculating the results of long equations to decide on the best spark timing and determining how long the fuel injector is open. The ECU does all of this to ensure the lowest emissions and best mileage.



Features:

- Connects to USB
- Supports high speed ECU flashing
- Led Indications for USB-power/CAR-power/rx/tx
- Can read and write a lot more ECU's than the normal KWP2000 Software

Functions:

This Kit can be used to read and write flash dumps of the most recent ECU's
It is very easy to use - You need only a PC with Windows and a USB port

Restrictions:

- Backup of the ECU memory is not supported for some of the listed ECU`s here
- Some ECU`s can not be flashed over the OBD2 connector in the car, in this case you have to remove the ECU from the car and flash it "on desk"

Its easy just connect cable from your laptop to your car, run program and thats all!!!

Connect to your computer with Usb port and Obd2 to the car

Petrol (Naturally Aspirated)

Remapping a petrol engine ECU will produce 10 - 15% BHP depending on exact specification, the engine will also be more responsive on initial acceleration and produce more torque (up to 20%) through out the entire rev range, giving more response on lighter throttle.

Petrol (Turbo)

Remapping a petrol turbo engine ECU will produce 20 - 30% BHP depending on exact specification, the engine will be significantly more responsive with power coming in immediately relative to throttle input with no lagging at higher revs. This large increase in power & torque gives far more flexibility in all gears reducing the need to change down unnecessarily to overtake safely and quickly.

Diesel (turbo)

Remapping a diesel turbo engine ECU will produce 30 - 50% BHP and 60 - 75% torque depending on exact specification, diesel engines give the most impressive power and torque gains available. Extra power is gained through out the entire rev range and under all load conditions, the turning force gained from these engines is imence. This really is the best way of changing your car without having to change your car. Just seeing customers faces after tuning these engines really makes the job worth while

The ecu-flasher is compatible with:

- the read/write software which comes with the package
- other kwp and iso software

