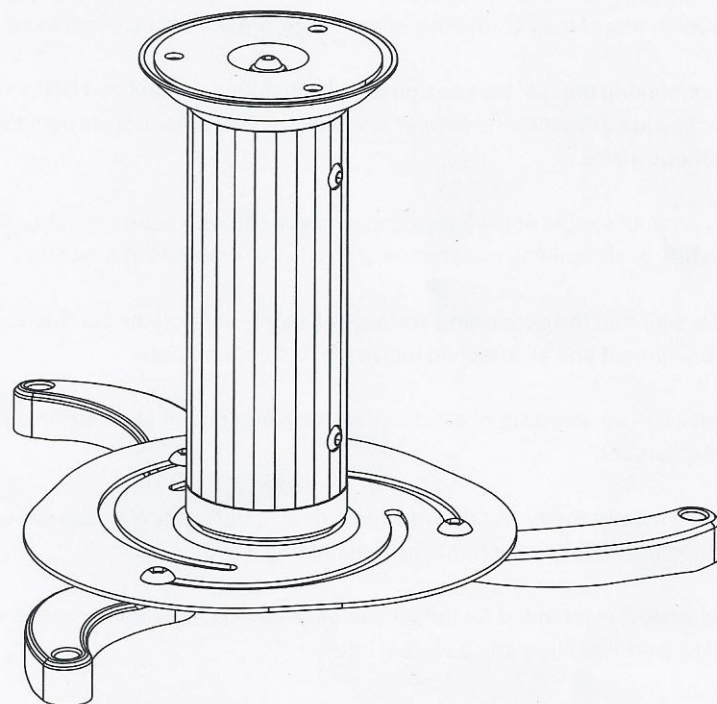


Projector Ceiling Mount



PRB-1

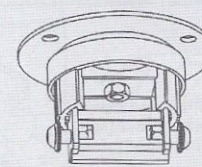


CAUTION: DO NOT EXCEED RATED LISTED WEIGHT CAPACITY. SERIOUS INJURY OR PROPERTY DAMAGE MAY OCCUR!

ISSUED: FEB. 2013

Component Checklist

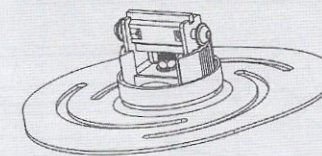
IMPORTANT: Ensure that you have received all parts according to the component checklist prior to installation. If any parts are missing or faulty, telephone your local distributor for a replacement.



ceiling plate (x1)
A



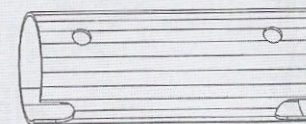
decorative cover (x1)
B



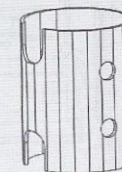
projector plate (x1)
C



mounting leg (x3)
D



15cm extension pipe (x1)
E



8cm extension pipe (x1)
F

Package M



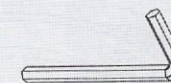
M4x14 (x4)
M-A



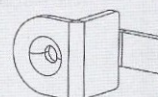
M5x20 (x3)
M-B



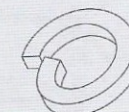
M6x12 (x3)
M-C



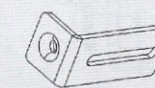
4mm Allen key (x1)
M-D



adjustable part (x3)
M-E



M6 washer (x3)
M-F



adjustable part (x2)
M-G



spacer (x6)
M-H

Package W



ST6.3x50 (x3)
W-A

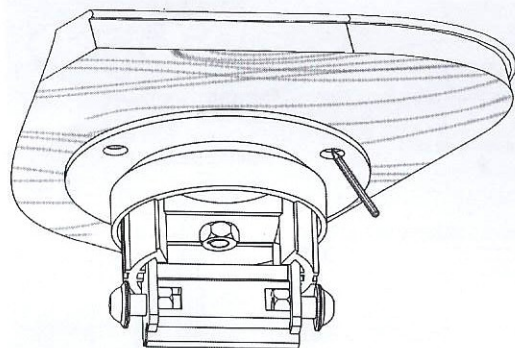
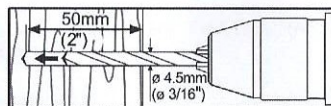


concrete anchor (x3)
W-B

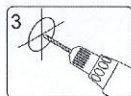
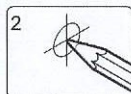


D6 washer (x6)
W-C

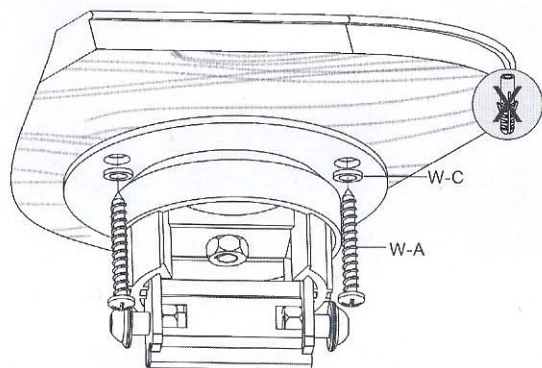
1a. Wood Ceiling Mounting



Find and mark the exact location of mounting holes



Drill three pilot holes

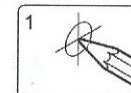
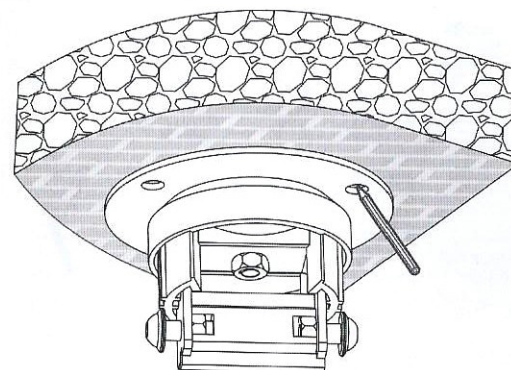
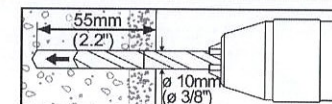
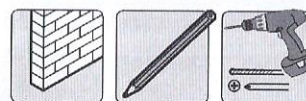


Screw the ceiling plate onto the ceiling

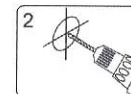
⚠ WARNING

- Installers are responsible to provide hardware for other types of mounting situations.
- Installers must verify that the supporting surface will safely support the combined weight of the equipment and all attached hardware and components.

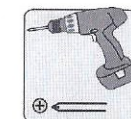
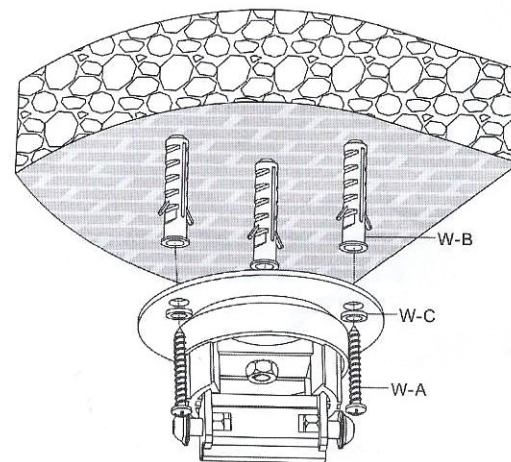
1b. Solid Brick and Concrete Mounting



Mark the exact location of mounting holes



Drill three pilot holes

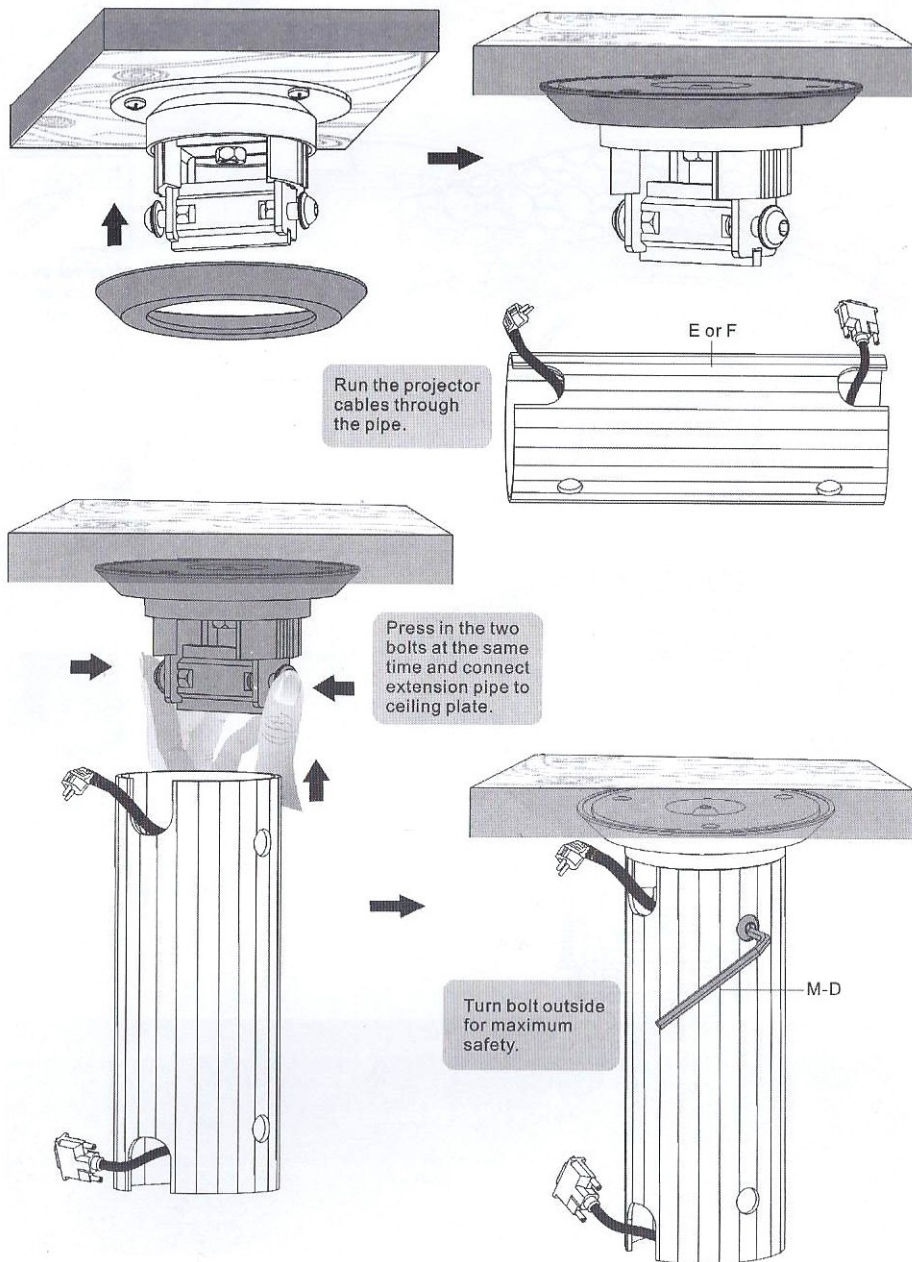


Screw the ceiling plate onto the ceiling

⚠ WARNING

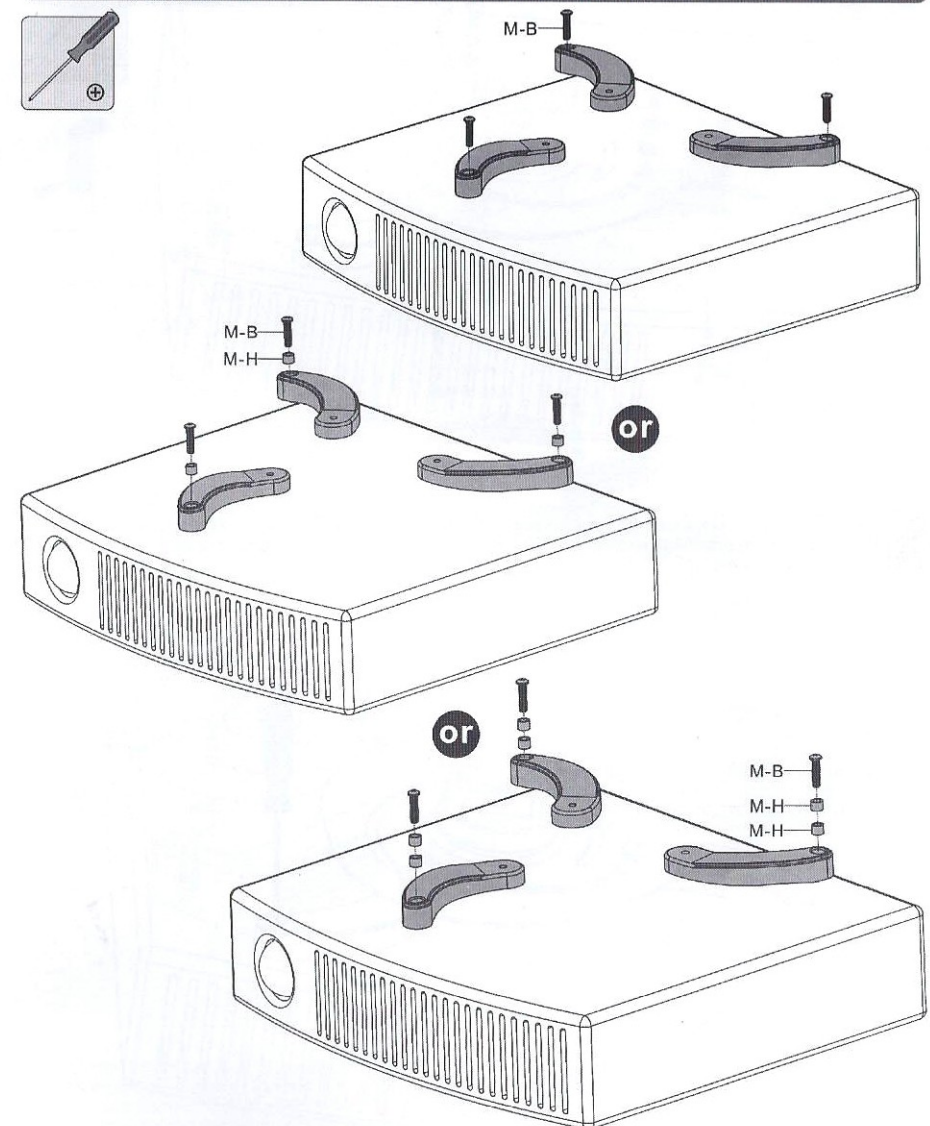
Installers must verify that the supporting surface will safely support the combined weight of the equipment and all attached hardware and components.

2. Installing the Decorative Cover and the Extension Pipe



3. Attaching the Mounting Legs and the Projector Plate

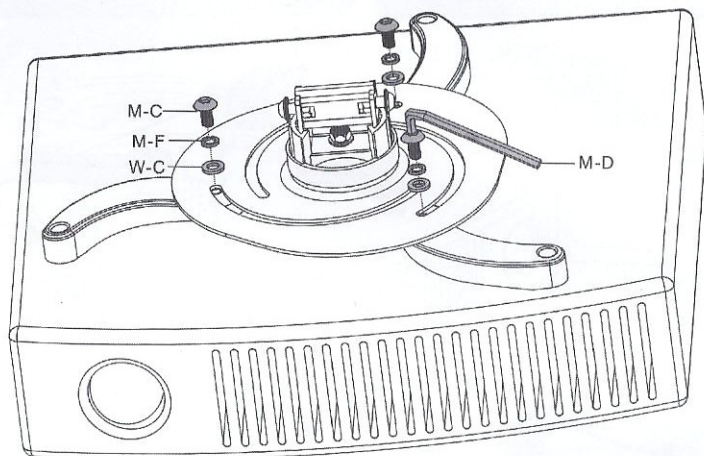
3a.common mounting



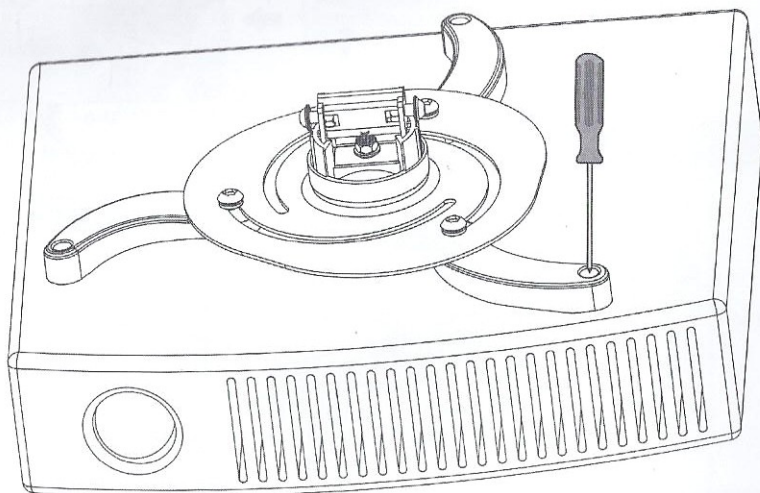
Locate the projector's mounting points.
Screw the mounting legs onto the projector.



DO NOT TIGHTEN ALL SCREWS AT THIS TIME.



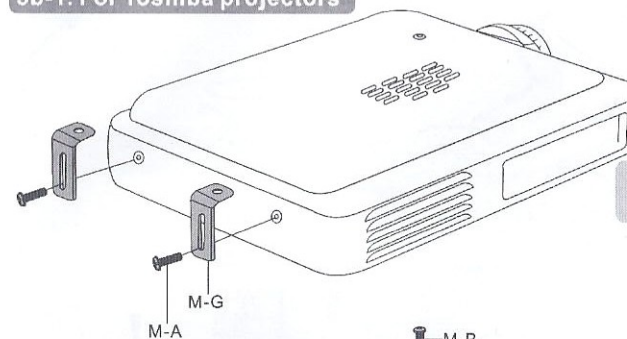
Place the projector plate on the mounting legs, as close as to projector center of gravity as possible. Slightly adjust the arms to fit slots pattern on the projector plate. And then use screws and washers to fix the projector plate.



Tighten the all mounting screws which secure the mounting legs to the projector at this time.

3b. for Toshiba projectors

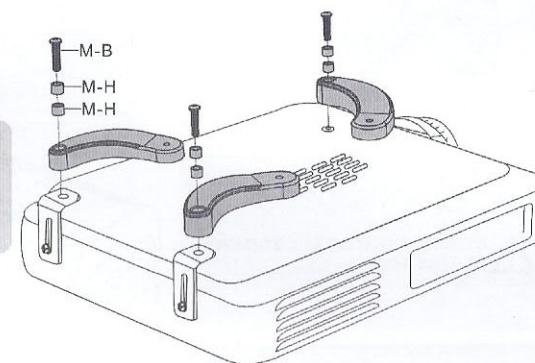
3b-1. For Toshiba projectors



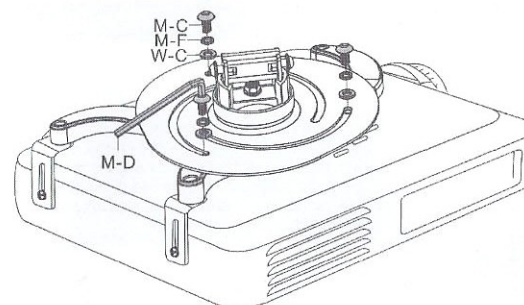
Attach the adjustable part to the projector using the screws.

Locate the projector's mounting points. Screw the mounting legs onto the projector.

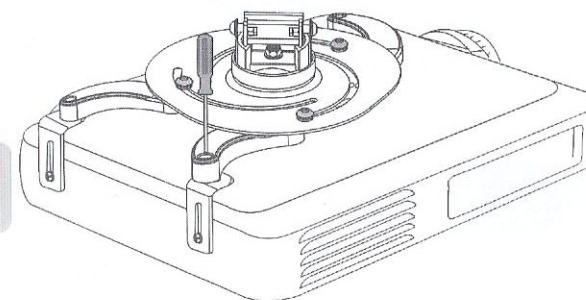
DO NOT TIGHTEN ALL SCREWS AT THIS TIME.



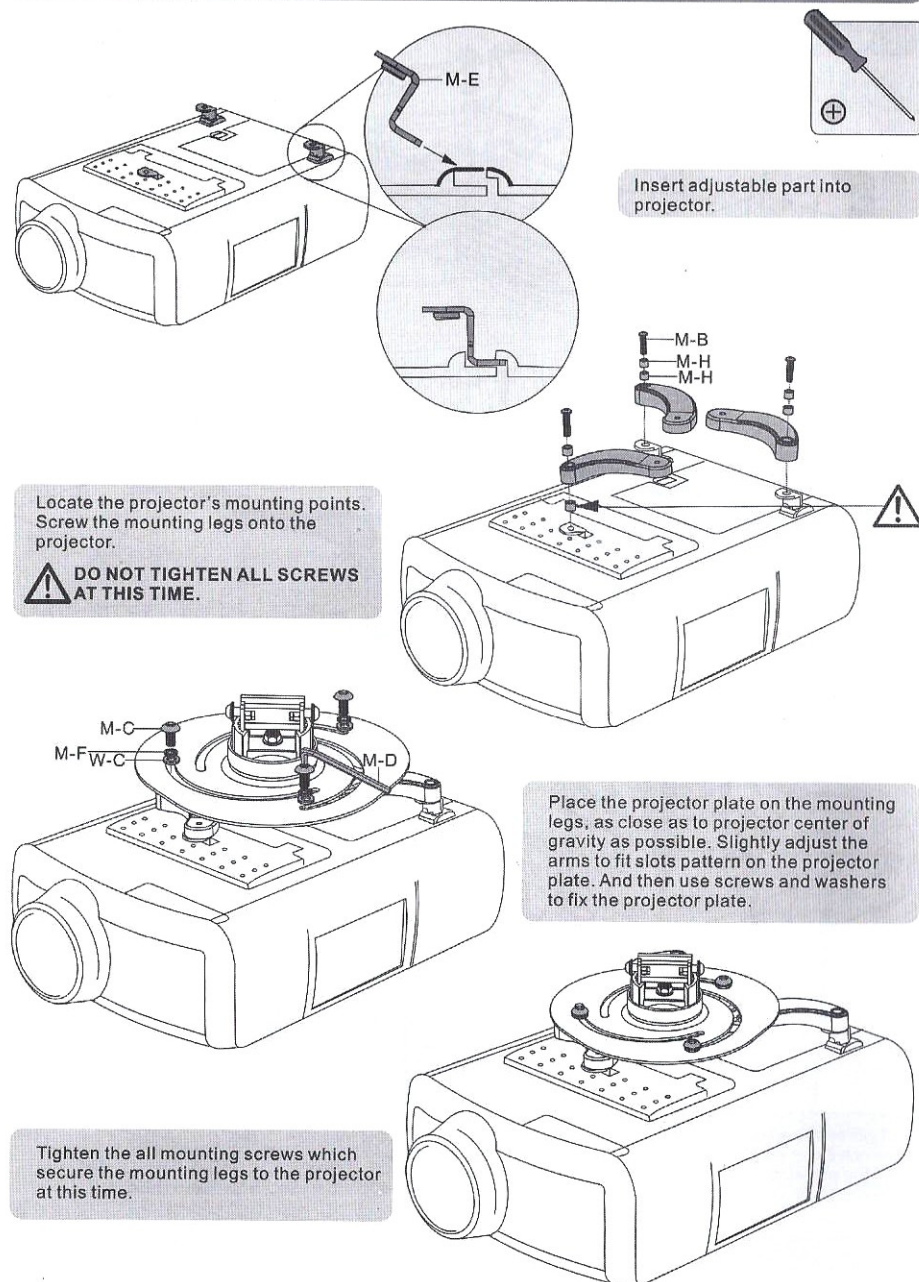
Place the projector plate on the mounting legs, as close as to projector center of gravity as possible. Slightly adjust the arms to fit slots pattern on the projector plate. And then use screws and washers to fix the projector plate.



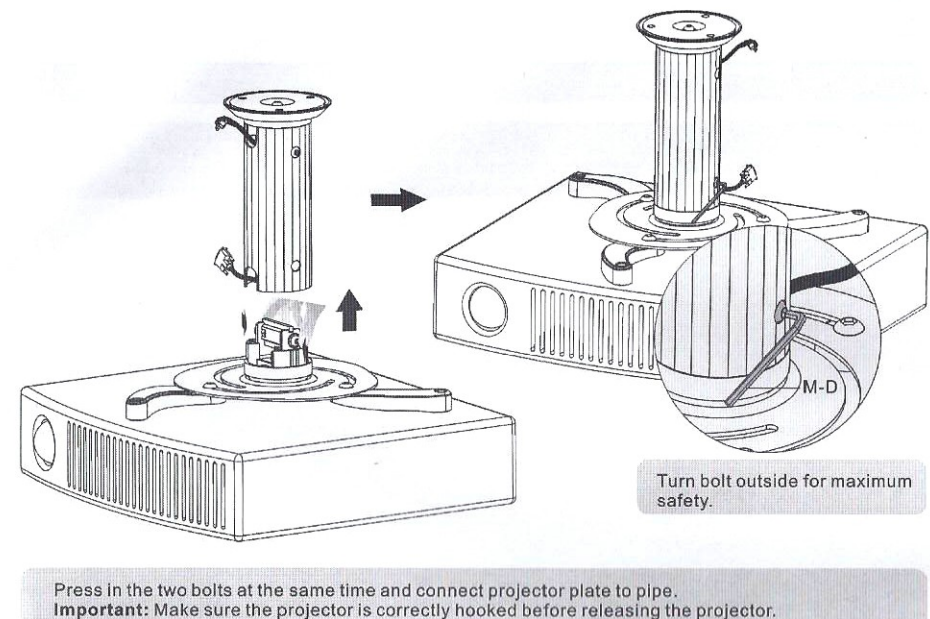
Tighten the all mounting screws which secure the mounting legs to the projector at this time.



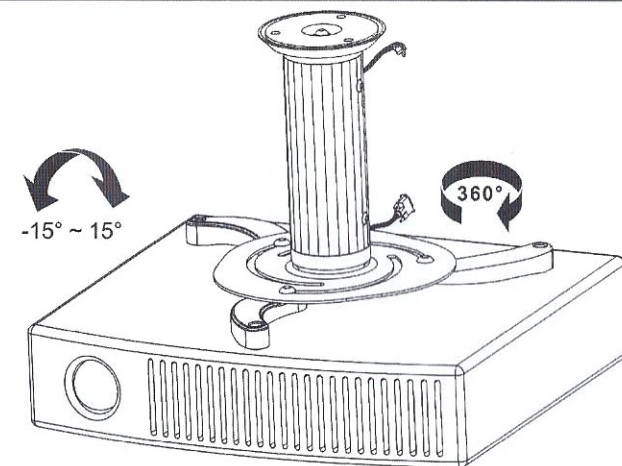
3b-2. for Philips projectors



4. Hang the Projector onto the Ceiling Mount



5. Adjustment



Adjust to the desired location or tilt.