

ASSEMBLY INSTRUCTIONS

FOR ADJUSTABLE FLAT PANEL WALL MOUNT

This product is designed to mount flat panel televisions weighing up to 75kgs/165lbs to a vertical firm wall.

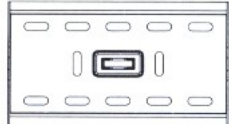
Safety Warning: Be careful to make sure there are no missing or defective parts. Never use defective parts. Improper installation may cause damage or serious injury.

Note: The included hardware is for mounting on walls. If you are uncertain about the nature of your wall, consult an expert. Please consult your hardware or installation professional for proper mounting to other types or walls. The supplied hardware is not for steel.

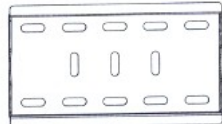
Forbidden Instruction: Do not mount onto plasterboard or paneled walls.

Provided parts:

The wall plate is optional.



The wall plate with gradienter(1)



The wall plate without gradienter(1)



b: monitor bracket (2)



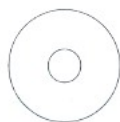
c: large bolt (6)



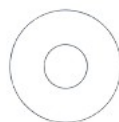
d: concrete anchor (6)



e: M4 washer (4)



f: M5/M6 washer (12)



g: M8 washer (6)



h: M4 lock washer (4)



i: M5 lock washer (4)



j: M6 lock washer (4)



k: M8 spacer (4)



l: M4*15 (4)



m: M4*30 (4)



n: M5*15 (4)



o: M5*30 (4)

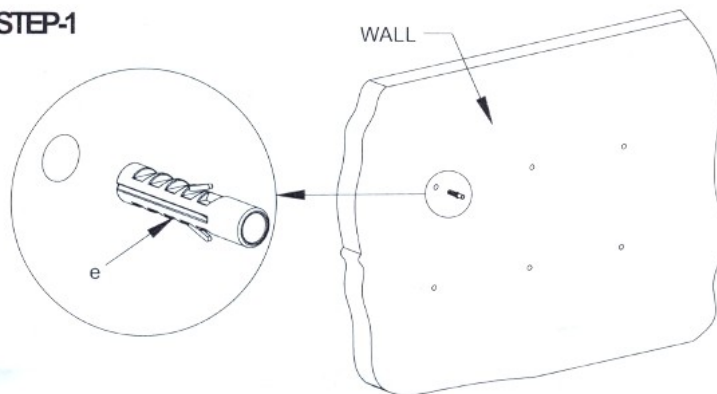


p: M6*15 (4)



q: M6*30 (4)

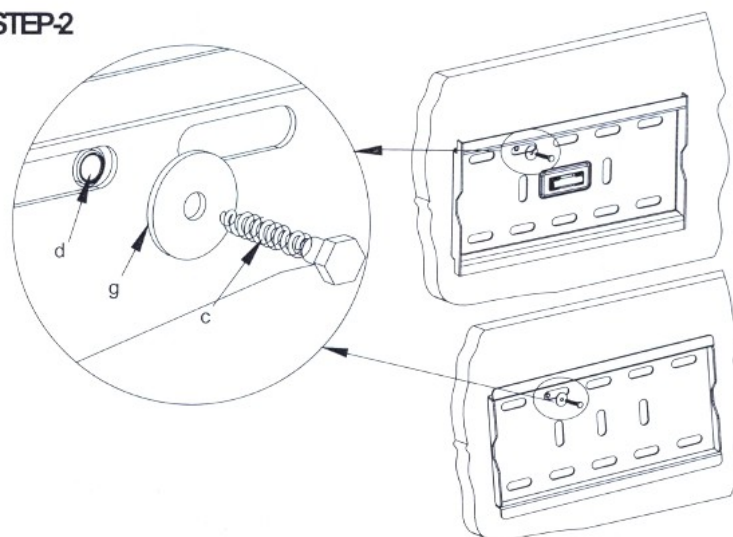
STEP-1



Step1:

Use the wall plate as a templet to drill six holes of 3/8" diameter and 2" depth in the concrete wall. Then wedge six plastic concrete anchors into the holes.

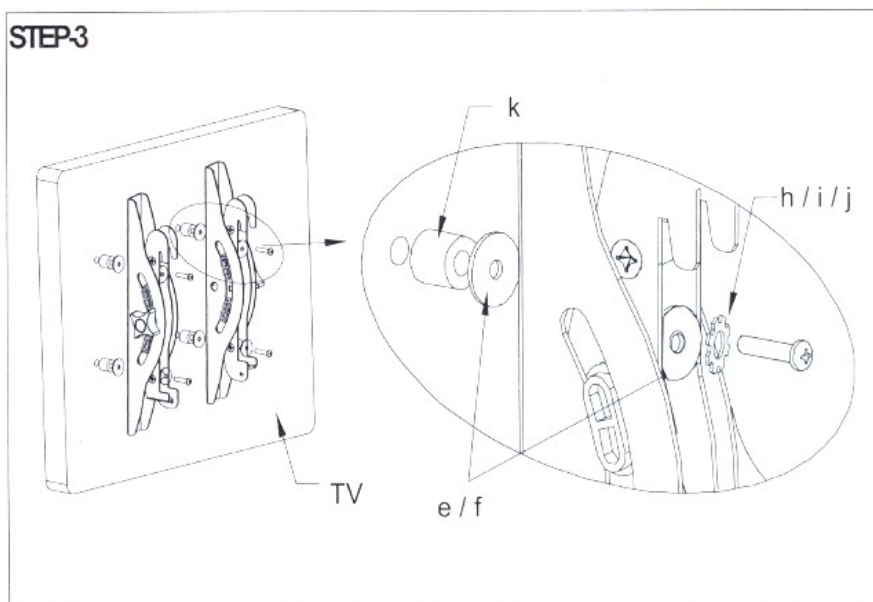
STEP-2



Step2:

Install the wall plate. Put the wall plate on the wall, and then screw six lag bolts into each plastic concrete anchor through metal washer to fix the lag bolt, the plastic concrete anchor and the wall.

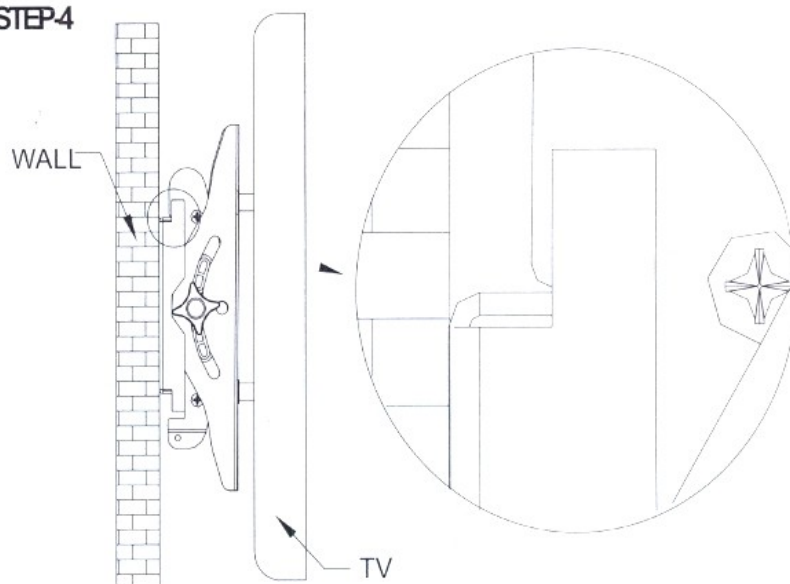
STEP-3



Step3:

Install the monitor brackets onto the back of the panel TV: screw two bolts into the holes in the back of the panel TV to install each monitor bracket. Make sure the distance from each bracket to the top of the panel TV is equal, and also as center as possible. The parts shall be selected according to the dimensions of the holes in the back of the panel TV.

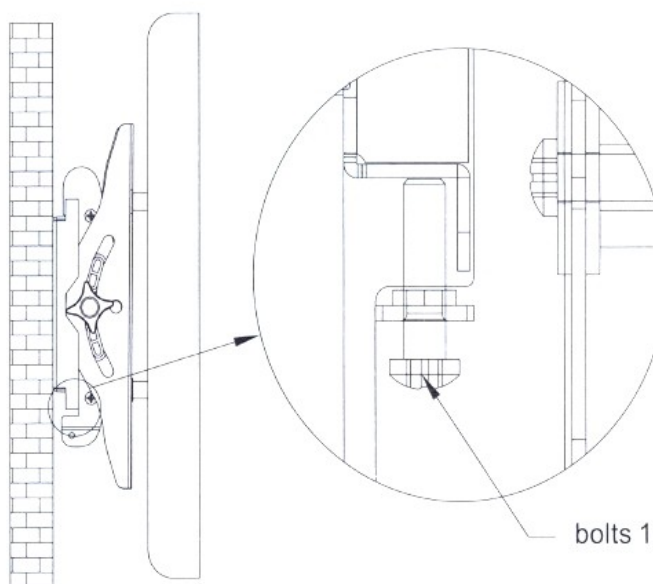
STEP-4



Step4:

Hang the two monitor brackets together with the panel TV on the wall plate, relax the hands until they are caught hold of.

STEP-5



Step 5:

Fix the two bolts 1 under the monitor brackets inside of the wall plate and then screw them down.

Remark:

- A. Installed by professional only.
- B. Installed on the hard wall or pillar.