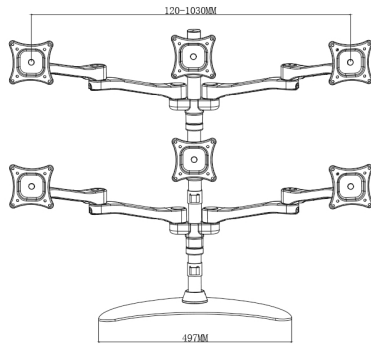


Installation Instructions

Model:ML1006

Desktop Tilting TV Mount



Max Loading:9 KG
Screen Size:13 to 27"

Installation manual

- 1.We have the final ownership and interpretation for this Instruction.
- 2.Some detail in install maybe not in this instruction
- 3.Images may different from actual product

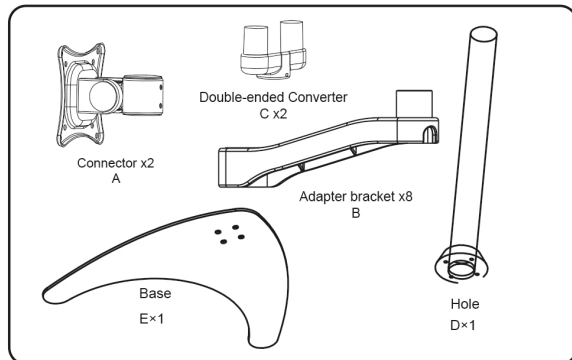
Note:

- 1.Make sure that the supporting surface will safely support the combined load of the equipment and all attached hardware and components
- 2.Do not begin the installation of the product when you have read and understand the instructions and warnings contained in this Installation sheet,if you have any question regarding any of the instruction or warning,please contact us.
- 3.Keep away from children
- 4.Never exceed the max loading.

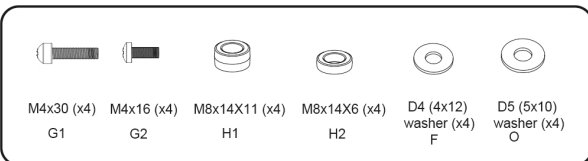
Warranty period

Two years after products deliver

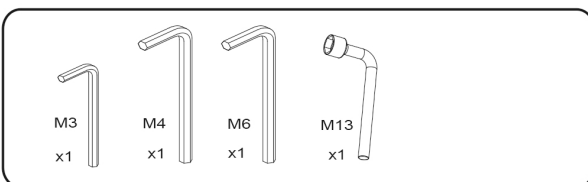
Accessory



screw

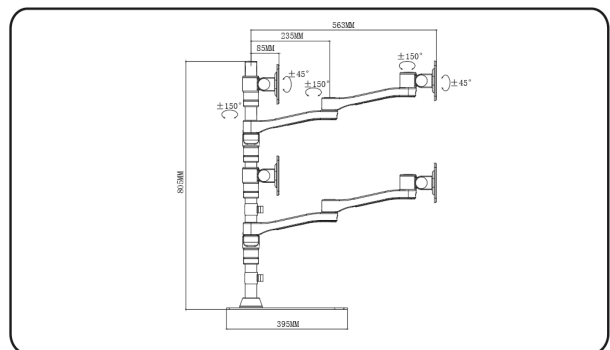
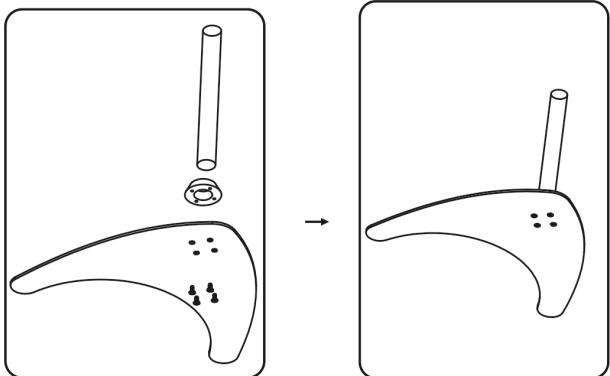


Installation parts



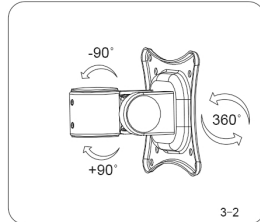
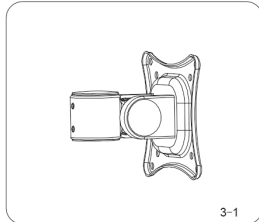
Installing to Desk

- 1.Connect the pole and base with 4 screws.
- 2.make the size of tongs suitable for table's thickness.
- 3.Put the mount onto desk reposeful.

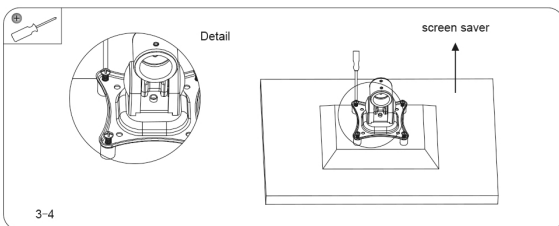
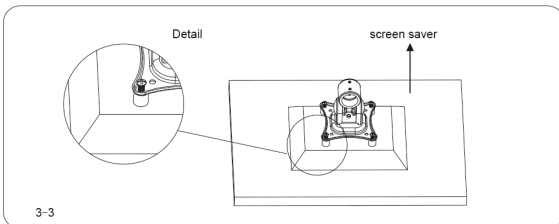


Installing the display

1. Make sure the bracket is hard to tip when you pull the head with your hand, you can use spanner to adjust it as shown on 3-1

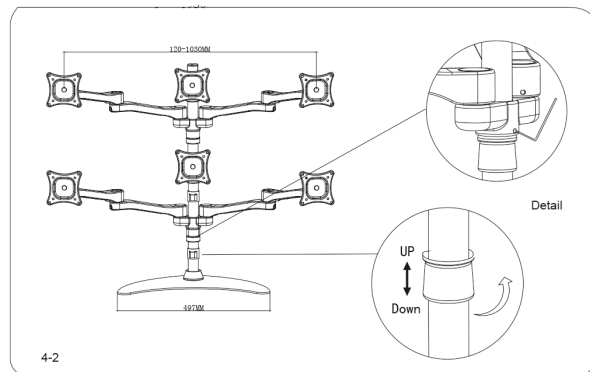
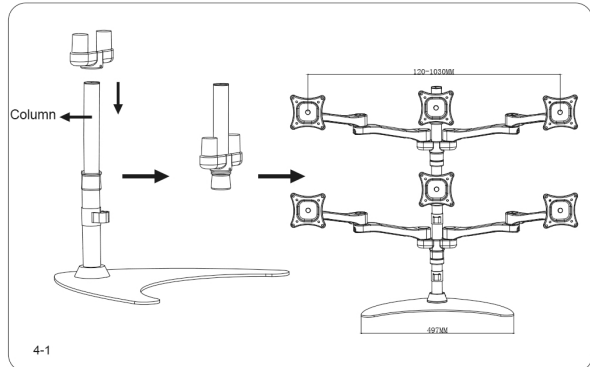


2. Put the display face down carefully, set out the hole deepness back of it, choose the right screw as shown on 3-3



Installing adapter bracket

1. Put the double-ended Converter onto Column then put the adapter bracket on converter as shown on 4-1



Cable management

Note: Make sure that the adapter bracket can extend enough, cable are long and flab enough to moved.

1. Tighten the screw till the display angle can be fixed, then push or pull from top or bottom of screen to adjust the display to the desired angle.
2. Route the cables through the cable clip.

