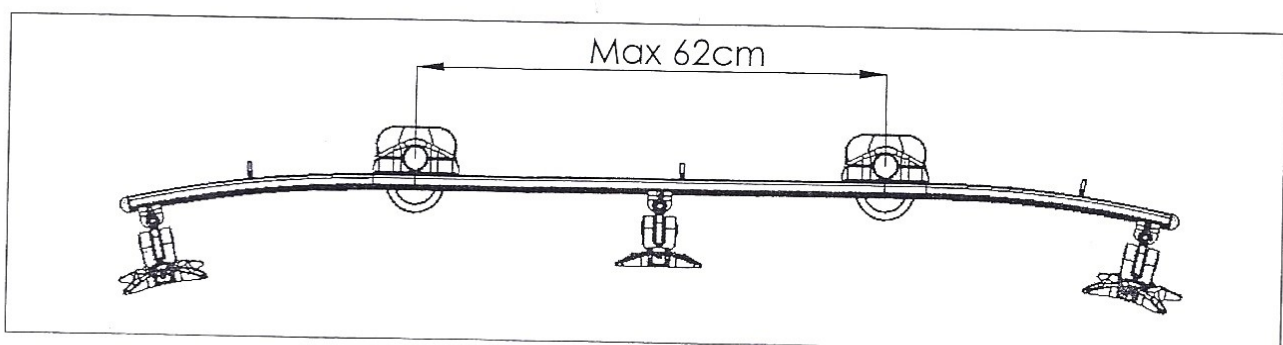
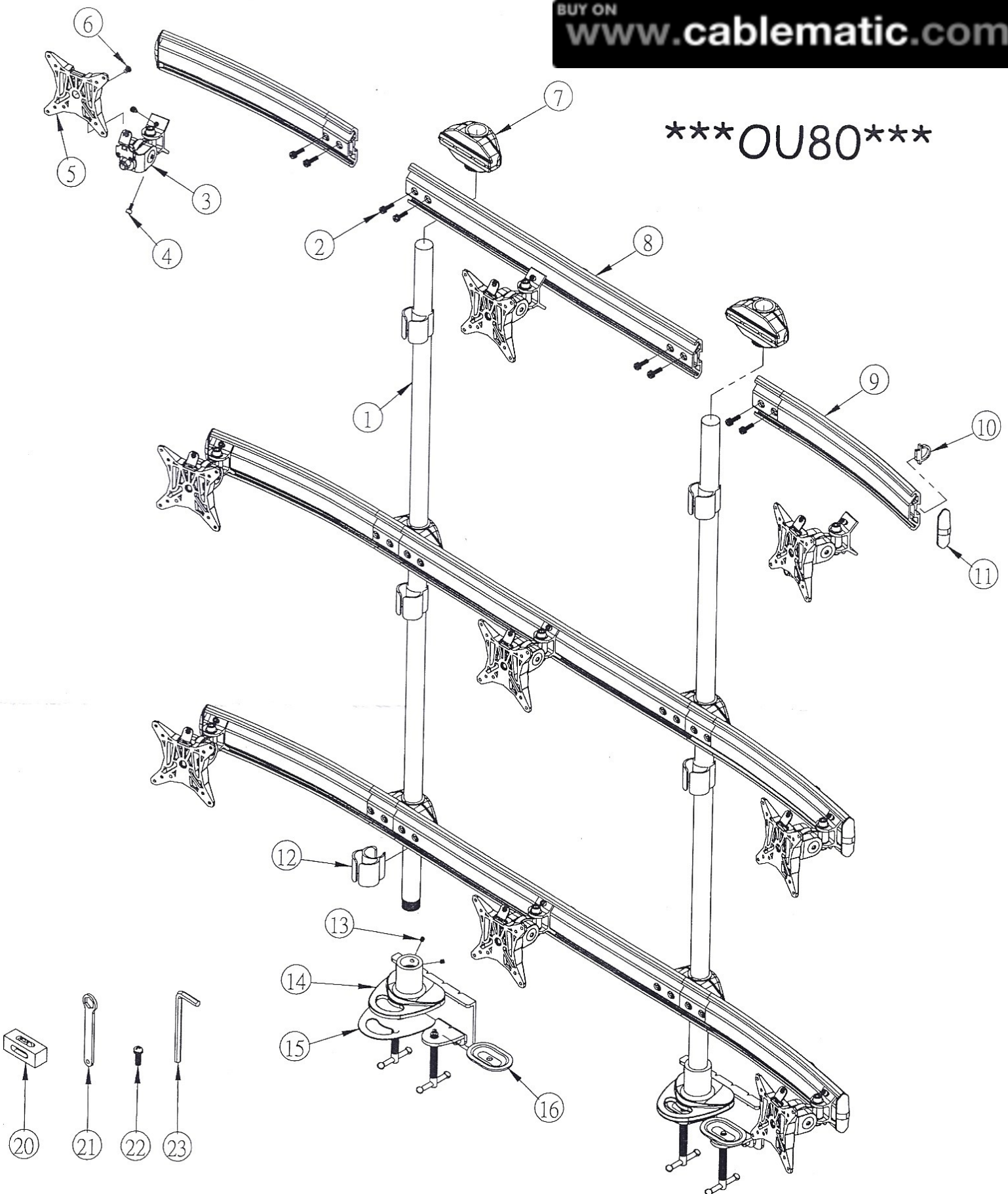
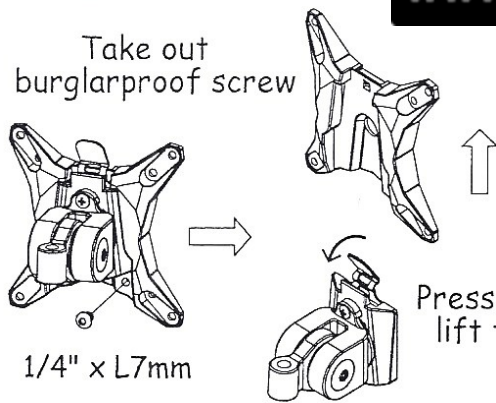


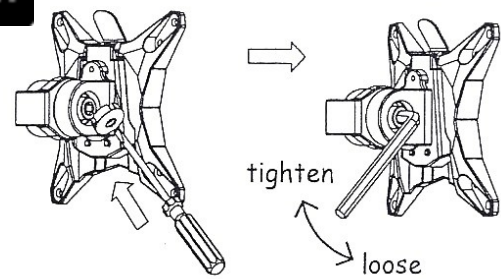
OU80



Take out
burglarproof screw

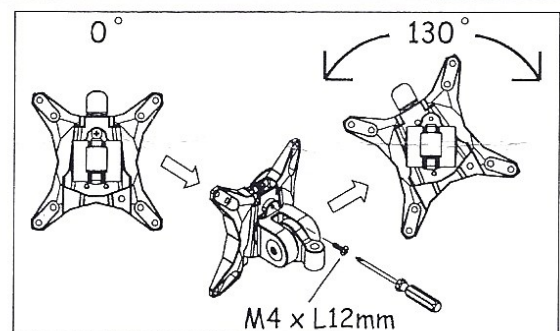
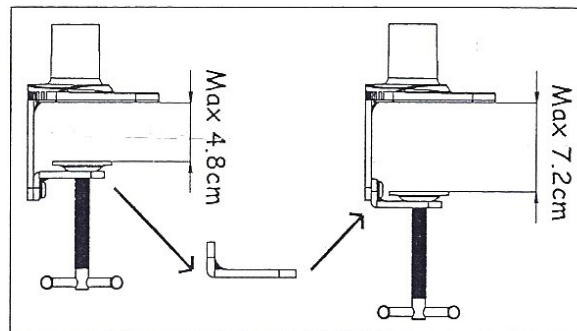
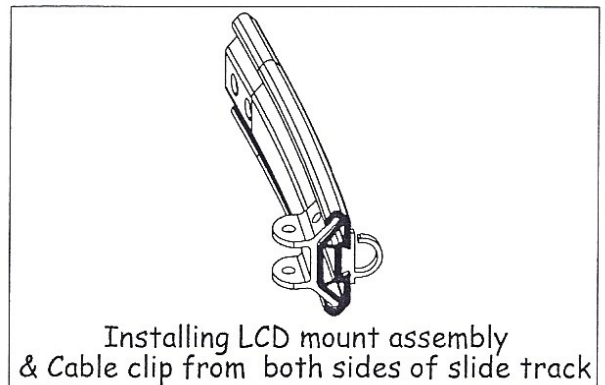
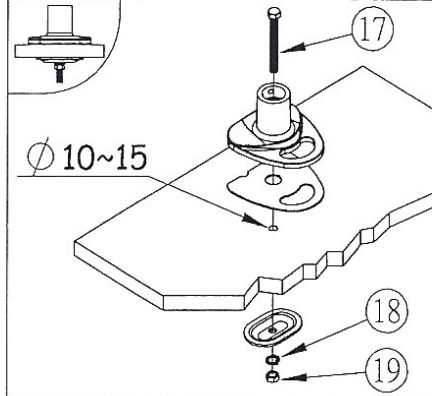


Press the flap, and
lift the LCD up



1. Use a flat-pin screw-driver to push open the plastic cap.
2. Loosen the cap screw by Allen wrench NO.6 adjust the tilting angle then tighten the cap screw again.

Thru-Desk



Item	Spare parts	Q'ty
1	FIXED TUBE L=1200mm	2
2	SCREW M6*P1.0*L22 + 2WASHERS	24
3	LCD MOUNT ASSEMBLY	9
4	SCREW CAP M5*P0.8*L10mm	18
5	VESA BRACKET	9
6	SCREW 1/4"-20UNC*L7 (ANTI-THEFT)	9
7	JOINT ASSEMBLY	6
8	ARM L=620mm	3
9	ARM L=400mm	6
10	BACK CABLE CLIP	9
11	ARM COVER	6
12	TUBE CABLE CLIP	6
13	BRAKE SCREW M6*P1.0*L6mm	4
14	BASE	2
15	PAD	2
16	FIXED PLATE	4
17	SCREW BH 3/8"-16UNC*L3"(grommet mount only)	2
18	SPRING WASHER ϕ 3/8"(grommet mount only)	2
19	NUT 3/8"-16UNC(grommet mount only)	2
20	GRADIENTER	1
21	WRENCH NO.13	1
22	SCREW M4*P0.7*L12mm FOR LCD	36
23-1	ALLEN WRENCH NO.3	1
23-2	ALLEN WRENCH NO.4 (ANTI-THEFT)	1
23-3	ALLEN WRENCH NO.6	1

