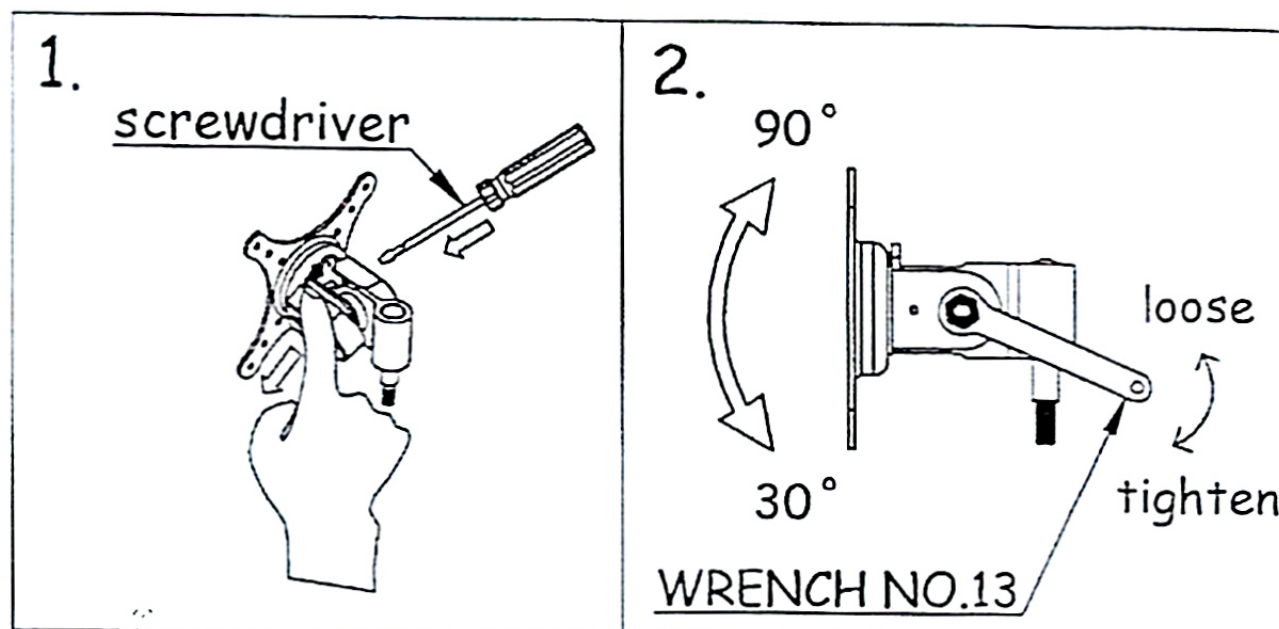
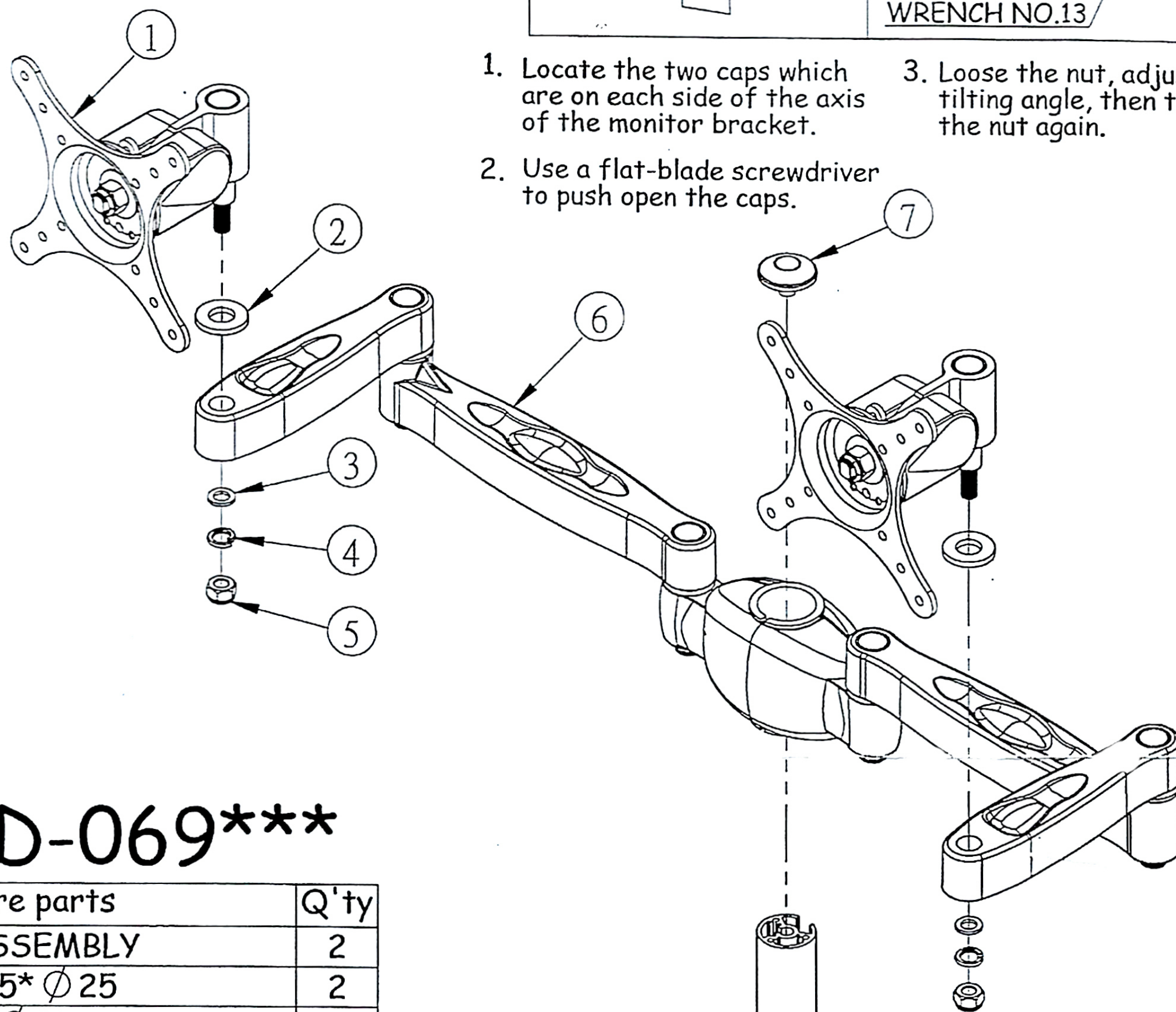


Why my monitors keep flopping?

Answer: Please follow steps below to set the tilting angle

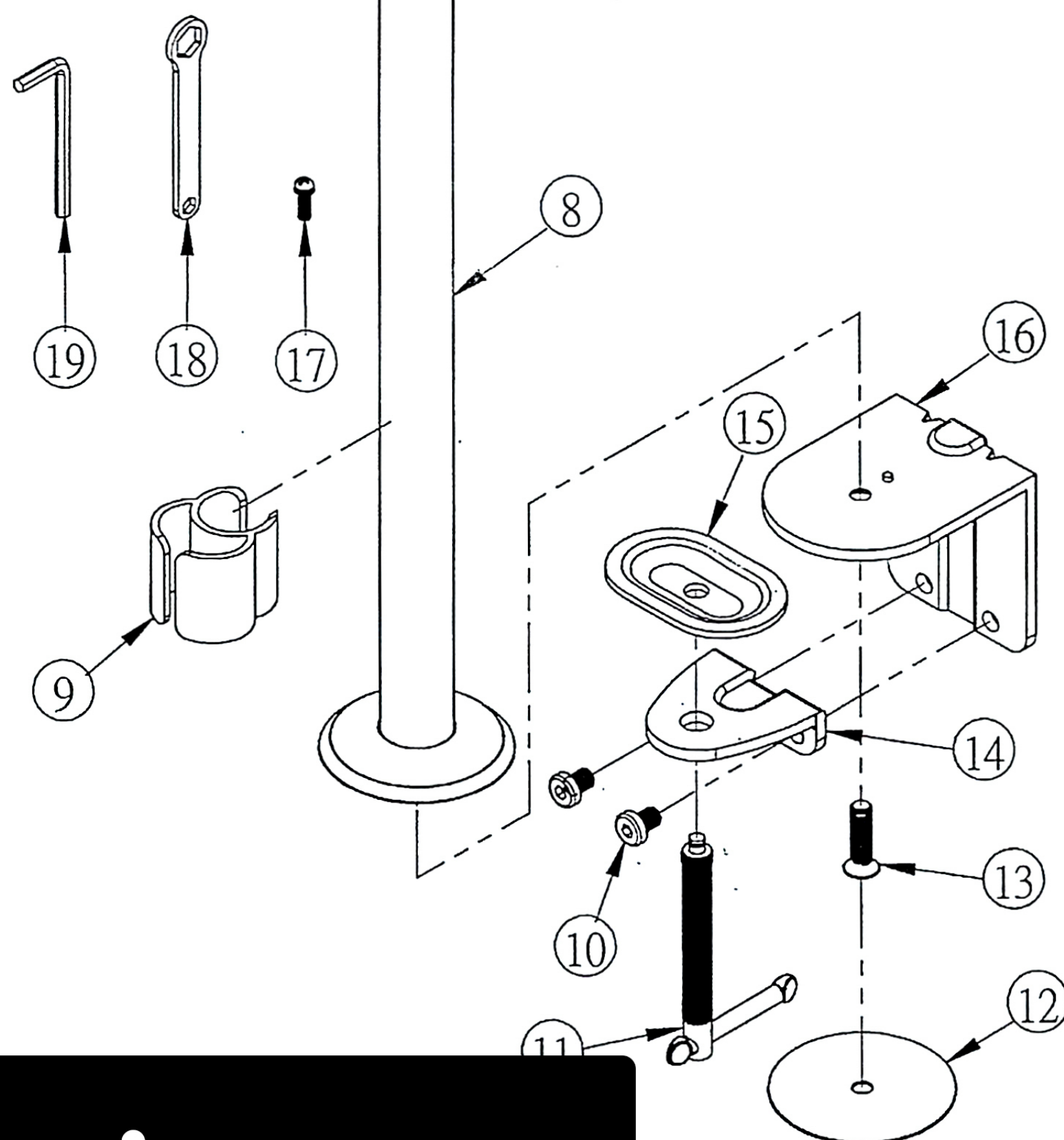


1. Locate the two caps which are on each side of the axis of the monitor bracket.
2. Use a flat-blade screwdriver to push open the caps.
3. Loosen the nut, adjust the tilting angle, then tighten the nut again.



LCD-069

Item	Spare parts	Q'ty
1	LCD MOUNT ASSEMBLY	2
2	WASHER $\phi 12.5^* \phi 25$	2
3	WASHER $\phi 8^* \phi 13$	2
4	SPRING WASHER $\phi 5/16"$	3
5	NYLON NUT $5/16"-18UNC$	2
6	FOLD ARMS	1
7	PLASTIC COVER	1
8	ALUMINUM TUBE L=400mm	1
9	CABLE CLIP	1
10	SCREW CAP M8*P1.25*L10mm	2
11	FIXED SCREW	1
12	PAD $\phi 73$	1
13	SCREW M8*P1.25*L29mm	1
14	FIXED PLATE-A	1
15	FIXED PLATE-C	1
16	FIXED PLATE-A	1
17	SCREW M4*P0.7*L12mm FOR LCD	8
18	WRENCH NO.13	1
19-1	ALLEN WRENCH NO.4	1
19-2	ALLEN WRENCH NO.5	1
19-3	ALLEN WRENCH NO.6	1
20-1	SCREW CAP M8*P1.25*L60mm	1
20-2	SCREW CAP M8*P1.25*L75mm	1



BUY ON

www.cablematic.com

BUY ON

www.cablematic.com

