

**16/24-Port 10/100/1000T + 2-Port 100/1000X SFP
Managed Switch**

GS-4210-16T2S / GS-4210-24T2S

Quick Installation Guide

BUY ON

www.cablematic.com

Table of Contents

1. Package Contents	3
2. Requirements	4
3. Terminal Setup	5
4. Logon to the Console	6
5. Configuring IP Address via the Console	7
6. Saving the Configuration via the Console	9
7. Starting Web Management	10
8. Saving Configuration via the Web	13
9. Recovering Back to Default Configuration	14
10. Customer Support	15

1. Package Contents

Thank you for purchasing PLANET 16/24-Port 10/100/1000T + 2-Port 100/1000X SFP Managed Switches, GS-4210-16T2S and GS-4210-24T2S. "Managed Switch" mentioned in this quick installation guide refers to the GS-4210-16T2S and GS-4210-24T2S.

Open the box of the Managed Switch and carefully unpack it. The box should contain the following items:

- The GS-4210-16T2S or GS-4210-24T2S x 1
- Quick Installation Guide x 1
- RS232 to RJ45 Cable x 1
- Rubber Feet x 4
- Two Rack-mounting Brackets with Attachment Screws x 1
- Power Cord x 1
- SFP Dust-proof Cap x 2

If any item is found missing or damaged, please contact your local reseller for replacement.

BUY ON
www.cablematic.com

2. Requirements

- Workstations running Windows XP/2003/Vista/7/8/2008, MAC OS X or later, Linux, UNIX, or other platforms are compatible with TCP/IP protocols.
- Workstations are installed with Ethernet NIC (Network Interface Card)
- **Serial Port Connection (Terminal)**
 - The above Workstations come with COM Port (DB9) or USB-to-RS-232 converter.
 - The above Workstations have been installed with terminal emulator, such as Hyper Terminal included in Windows XP/2003.
 - Serial cable --- one end is attached to the RS-232 serial port, while the other end to the console port of the Managed Switch.
- **Ethernet Port Connection**
 - Network cables --- Use standard network (UTP) cables with RJ45 connectors.
 - The above PC is installed with Web browser and JAVA runtime environment plug-in.



Note

It is recommended to use Internet Explore 8.0 or above to access the Managed Switch. If the Web interface of the Managed Switch is not accessible, please turn off the anti-virus software or firewall and then try it again.

BUY ON
www.cablematic.com

3. Terminal Setup

To configure the system, connect a serial cable to a **COM port** on a PC or notebook computer and to RJ45 type of console port of the Managed Switch.

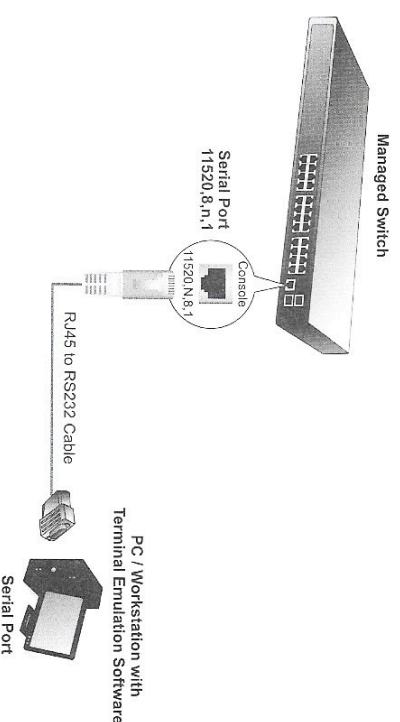


Figure 3-1: Managed Switch Console Connectivity

A terminal program is required to make the software connection to the Managed Switch.

1. Run terminal program on the OS.
2. When the following screen appears, make sure that the COM port should be configured as:

◆ Baud : 115200
◆ Data bits : 8
◆ Parity : None
◆ Stop bits : 1
◆ Flow control : None

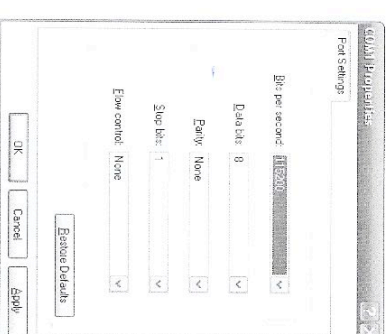


Figure 3-2: COM Port Configuration

4. Logon to the Console

Once the terminal is connected to the device, power on the Managed Switch and the terminal will **run self testing procedures**. Then, the following message asks to login user name and password. The factory default user name and password are shown as follows and the login screen in Figure 4-1 appears.

Username: **admin**
Password: **admin**



Note

The following console screen based on GS-4210-24T2S will be the same as that of GS-4210-16T2S.

```
Switch Command Line Interface (Version V1.00141020)

Press any key to continue
Username: admin
Password: *****
GS-4210-24T2S# _
```

Figure 4-1: Managed Switch Console Login Screen

The user can now enter commands to manage the Managed Switch. For a detailed description of the commands, please refer to the following chapters.



Note

1. For security reason, please change and memorize the new password after this first setup.
2. Only accept command in lowercase letter under console interface.

5. Configuring IP Address via the Console

The Managed Switch is shipped with default IP address as follows:

IP Address: **192.168.0.100**
Subnet Mask: **255.255.255.0**

To check the current IP address or modify a new IP address for the Managed Switch, please use the procedures as follows:

■ Display of the current IP address

1. On "GS-4210-24T2S#" prompt, enter "**show ip**".
2. The screen displays the current IP address, Subnet Mask and Gateway shown in Figure 5-1.

```
Switch Command Line Interface (Version V1.00141020)

Press any key to continue
Username: admin
Password: *****
GS-4210-24T2S# show ip
IP Address: 192.168.0.100
Subnet Mask: 255.255.255.0
Gateway: 192.168.0.254
GS-4210-24T2S# _
```

Figure 5-1: IP Information Screen

■ Configuration of the IP address

3. On "GS-4210-24T2S#" prompt, enter "**configure**".
4. On "GS-4210-24T2S (config)#" prompt, enter the following command and press <Enter> as shown in Figure 5-2.

```
GS-4210-24T2S (config)# ip address 192.168.1.100 mask 255.255.255.0
GS-4210-24T2S (config)# ip default-gateway 192.168.1.254
```

The previous command would apply the following settings for the Managed Switch.

IP Address: 192.168.1.100
Subnet Mask: 255.255.255.0
Gateway: 192.168.1.254

```
Switch Command Line Interface (Version V1.0B141020)

Press any key to continue

Username: admin
Password: *****

GS-4210-24T2S# configure
GS-4210-24T2S(config)# ip address 192.168.1.100 mask 255.255.255.0
GS-4210-24T2S(config)# ip default-gateway 192.168.1.254
GS-4210-24T2S(config)#
```

Figure 5-2: Setting IP Address Screen

5. Repeat Step 1 to check if the IP address is changed.

If the IP is successfully configured, the Managed Switch will apply the new IP address setting immediately. You can access the Web interface of Managed Switch through the new IP address.



Note

If you are not familiar with console command or the related parameter, enter "?" anytime in console to get the help description.

6. Saving the Configuration via the Console

In switches, the running configuration file stores in the RAM. In the current version, the running configuration sequence running-config can be saved from the RAM to FLASH by **save** command or **copy running-config startup-config** command, so that the running configuration sequence becomes the startup configuration file, which is called configuration save.

1. On "**GS-4210-24T2S #**" prompt, enter "**copy running-config startup-config**" as shown in Figure 6-1.

```
Switch Command Line Interface (Version V1.0B141020)

Press any key to continue

Username: admin
Password: *****

GS-4210-24T2S# configure
GS-4210-24T2S(config)# ip address 192.168.1.100 mask 255.255.255.0
GS-4210-24T2S(config)# ip default-gateway 192.168.1.254
GS-4210-24T2S# copy running-config startup-config
SUCCESS#
GS-4210-24T2S#
```

Figure 6-1: Saving the Configuration Screen

7. Starting Web Management

The following shows how to start up the **Web Management** of the Managed Switch. Note the Managed Switch is configured through an Ethernet connection. Please make sure the manager PC must be set on the same **IP subnet address**.

For example, the default IP address of the Managed Switch is **192.168.0.100**; then the manager PC should be set at **192.168.0.x** (where x is a number between 1 and 254, except 100) and the default subnet mask is 255.255.255.0.

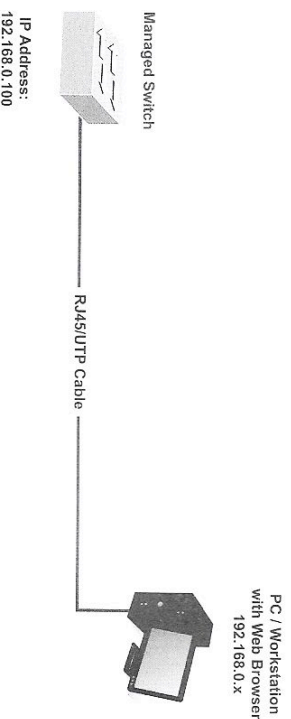


Figure 7-1: IP Management Diagram

Logging in the Managed Switch

1. Use Internet Explorer 8.0 or above Web browser and enter IP address **<http://192.168.0.100>** to access the Web interface.
2. When the following dialog box appears, please enter the default user name and password "**admin**". The login screen in Figure 7-2 appears.

Default Username: **admin**
Default Password: **admin**

BUY ON
www.cablematic.com



Username:
Password:

LOGIN

Figure 7-2: Web Login Screen

Note
The following web screen based on GS-4210-24T2S will be the same as that of GS-4210-16T2S.

3. After entering the password, the main screen appears as Figure 7-3 shows.

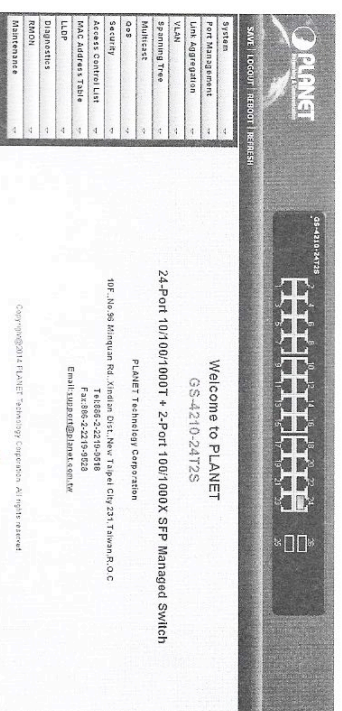


Figure 7-3: Web Main Screen of Managed Switch

The Switch Menu on the left of the Web page lets you access all the commands and statistics the Managed Switch provides.

System	▼
Port Management	▼
Link Aggregation	▼
VLAN	▼
Spanning Tree	▼
Multicast	▼
QoS	▼
Security	▼
Access Control List	▼
MAC Address Table	▼
LLDP	▼
Diagnostics	▼
RMON	▼
Maintenance	▼

Figure 7-4: Switch Menu

Now, you can use the Web management interface to continue the switch management. Please refer to the user's manual for more.

8 Saving Configuration via the Web

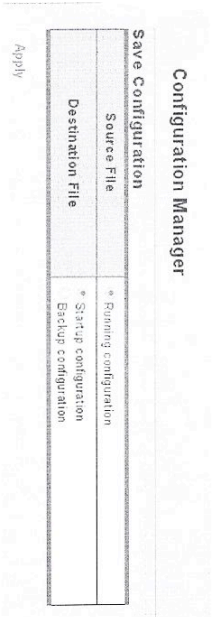
In the Managed Switch, the running configuration file stores in the RAM. In the current version, the running configuration sequence of running-config can be saved from the RAM to FLASH by "Save Configurations to FLASH" function, so that the running configuration sequence becomes the startup configuration file, which is called configuration save.

To save all applied changes and set the current configuration as a startup configuration. The startup-configuration file will be loaded automatically across a system reboot.

1. Click **"SAVE > Save Configurations to FLASH"** to login "Configuration Manager" Page.



2. Press the **"Apply"** button to save running configuration to startup configuration.



9. Recovering Back to Default Configuration

- IP address has been changed or admin password has been forgotten –

To reset the IP address to the default IP address "192.168.0.100" or reset the login password to default value, press the **reset button** on the front panel for about **10 seconds**. After the device is rebooted, you can login the Web interface management within the same subnet of 192.168.0.xx.

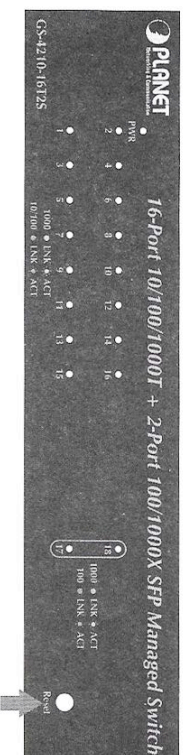


Figure 9-1: GS-4210-16T2S Reset Button

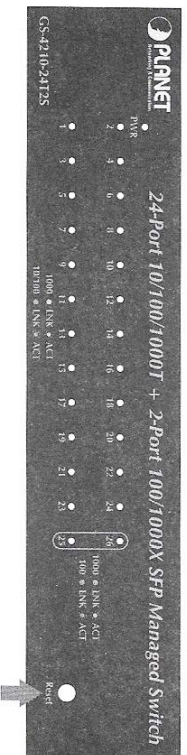


Figure 9-2: GS-4210-24T2S Reset Button

BUY ON
www.cablematic.com

10. Customer Support

Thank you for purchasing PLANET products. You can browse our online FAQ resource and User's Manual on PLANET Web site first to check if it could solve your issue. If you need more support information, please contact PLANET switch support team.

PLANET online FAQ:

<http://www.planet.com.tw/en/support/faq.php?type=1>

Switch support team mail address:

support_switch@planet.com.tw

GS-4210-16T2S User's Manual:

<http://www.planet.com.tw/en/support/download.php?type=1&model=48636&type=3>



GS-4210-24T2S User's Manual:

<http://www.planet.com.tw/en/support/download.php?type=1&model=48637&type=3>



Copyright © PLANET Technology Corp. 2015.

Contents are subject to revision without prior notice.

PLANET is a registered trademark of PLANET Technology Corp. All other trademarks belong to their respective owners.