

Rackmount Model



NetCom 811-RM

(RS232 Only, Rackmount Model)

NetCom 813-RM

(RS232/422/485, Rackmount Model)

Features

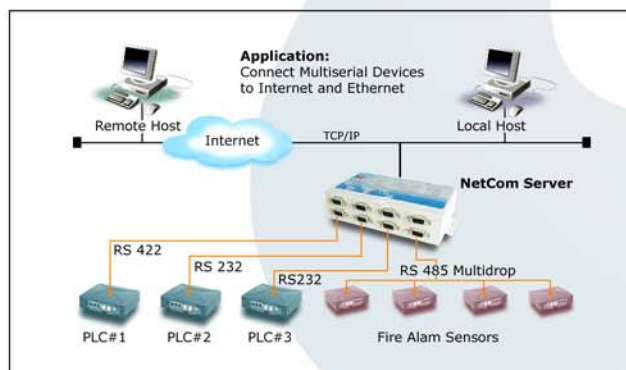
- 8 x RS232/422/485 serial ports selected by switches
- Control serial devices located virtually anywhere in Ethernet or Internet.
- 10BaseT/100BaseTx autodetect LAN Interface
- TCP Raw Server & Client Mode
- UDP Server / Client Mode
- Drivers for Virtual COM supporting Win NT/4.0, 2000, XP, 2003 and Linux fixed TTY
- Easy Installation and Configuration over WEB Browser, Driver panels, Telnet, SNMP
- Automatic mode switching Driver/Raw Mode and Server/Client Mode

Introduction

NetCom servers are small computers, which allow you to connect existing RS232/422/485 devices to Ethernet and Internet. Netcom servers are equipped with CPU, memory, realtime OS and TCP/IP protocols to bidirectionally translate data between serial interfaces and TCP/IP sockets. NetCom Servers used in Driver Mode make a remote serial port to act as a virtual local COM port. In this mode your original software application can directly control remotely located devices, such as data collection systems, over network. NetCom servers can easily be configured over WEB Browser, Driver panels, Telnet, serial Port, SNMP. NetCom Servers offer a transparent serial connection without platform and distance limitation.



NetCom Configuration Manager



Applications

Industrial / Factory / Laboratory automation
 SCADA systems
 Automatic warehouse control systems
 Building automation systems
 Wafer fabrication systems
 Self-service banking systems
 Retail systems
 Data acquisition systems



NetCom Webbrowser

Operating Modes

Additionally to the standard TCP Raw and UDP Modes, Netcom comes with Com Drivers supporting Windows (NT/4.0, 2000, XP, 2003) and Linux (Fix/TTY) operating systems. After installation of the driver for a Win-OS Netcom device appears in the Device Manager as VScom Virtual Com. Driver panels allow the user to easy configure all parameters of the Communication Port (COM) as for traditional local COM ports. Netcom drivers establish a transparent connection between host computer and serial device located anywhere on TCP/IP net. Existing software applications can be directly used to access the serial device as it would be connected to a local COM port.

Specifications

Hardware

Processor	ARM 7 TDMI 50MHz.
UART controller	16C550C or compatible.
Memory	8MB SDRAM, 1MB Flash.
Connector type	RJ45 for LAN, DB9 male for serial port.

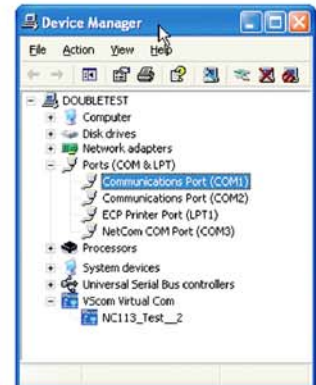
Interface

LAN interface	100BaseTx/10BaseT, autotdetect.
Protocols	TCP/IP, UDP, Telnet, DHCP, ICMP, HTTP, DNS, SNMP V1/2c/3.
Serial interface	8 x RS232, Max. 460Kbps.
Available Modes	RS232 full duplex RS422 full duplex RS485 4 wire, full duplex RS485 2 wire, half duplex, with echo RS485 2 wire, half duplex, without echo
Signals RS232	TxD, Rx/D, RTS/CTS, DTR, DSR, DCD, RI, GND
Signals RS422	Tx+/-, Rx+/-, GND
Signals RS485 2 Wire	Data+/-, GND
Signals RS485 4 Wire	Tx+/-, Rx+/-, GND
Speed	Up to 460Kbps on all ports symultaneously.
Parity	None, even, odd, space, mark.
Data bits	5, 6, 7, 8.
Stop bits	1, 1.5, 2.
IRQ	None.
I/O address	None.

VScom driver for Win NT/4.0, 2000, XP, 2003, Linux Fix/TTY. Driver mode creates virtual Com port Raw data transfer over TCP/IP. Waits for incoming connections from host client.
Raw data transfer over TCP/IP. Connects to a host server or device waiting for incoming connections. Special settings for user-defined modes.
Raw data transfer over UDP. The NetCom is client and server at the same time. With the timeout functionality and a configurable trigger string it can make defined UDP packets of incoming data.
Connecting two NetCom used as virtual null modem cable.

Features

- Controls 8 x RS232/422/485 devices anywhere in Ethernet or Internet
- 10BaseT/100BaseTx Ethernet autotdetect
- Driver automatically finds Netcom devices in the network
- Configuration over WEB Browser, Driver Panels, Telnet, serial Port, SNMP
- Automatic mode switching between Driver Mode and TCP/IP Raw Mode
- Supports TCP/IP, UDP, Telnet, DHCP, ICMP, HTTP, SNMP V1/2c/3, DNS



NetCom in Device Manager

Power & Environment

Power requirements	100-240V AC 47-63 Hz, 25VA
Power supply Adapter	*
Casing	SECC sheet metal
Dimension (WxLxH)	258x149x45 mm ³ 19" 1HU rackmount 278x155x46 mm ³ for DIN rail
Operating Temp.	0~60 degree C
Storage Temp.	-20~85 degree C

Special Features

Installation	Configuration utility automatically finds NetCom devices in the network.
Operating mode	Automatic mode switching between driver and TCP RAW mode. With TCP advanced settings it is possible to configure the NetCom for using it in multiple modes, so it decides automatically which mode should be used.
Configuration	Configuration over Driver Panels, NetCom Manager, WEB browser, serial console, Telnet, SNMP.
SNMP	Special VScom MIB included.
ART Control for RS485	Automatic Receive Transmit Control or RTS
DNS	Domain name server support.
Serial interface	Serial interface configurable with external switch.
Firewall	Special precautions for firewall environments.
Firmware	Firmware update over WEB browser, Telnet, ComPort.
LEDs	LEDs for power, Tx, Rx, LAN Link, LAN speed.

Security

Password access	Every capabilities of configuration use the same password including SNMP V3.
-----------------	--

Approvals

EMC	FCC Class A, CE Class A
-----	-------------------------

Ordering Information

Product name: **NetCom 811-RM**
Packing list: NetCom 811-RM, CD-ROM driver, manual & configuration software, 19" rackmount wings, Quick installation guide (printed).

Product name: **NetCom 813-RM**
Packing list: NetCom 813-RM, CD-ROM driver, manual & configuration software, 19" rackmount wings, Quick installation guide (printed).