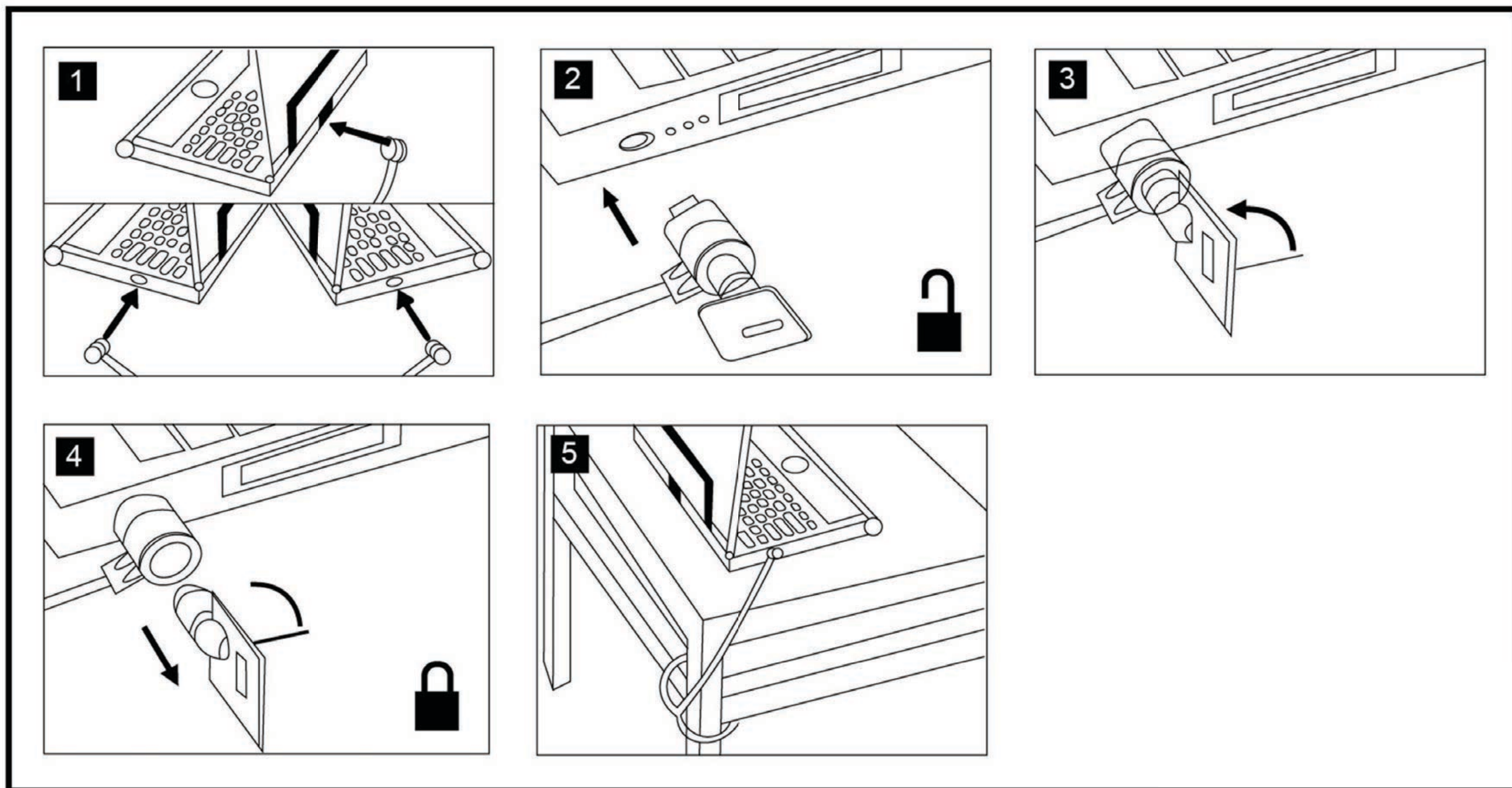


## ● COMMON TYPE LOCK



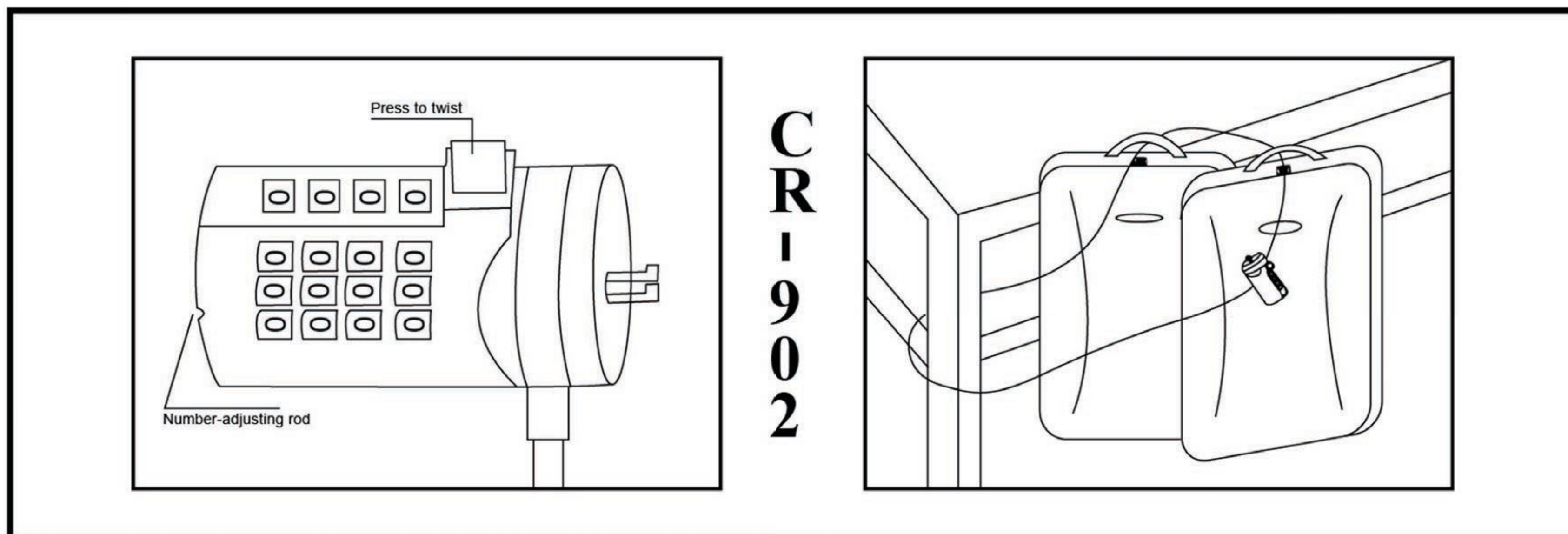
## INSTRUCTIONS FOR USE

To set your personal combination, follow these steps:

1. Push the number-adjusting rod of lock inward (The original number is 0-0-0-0).
2. Set your secret combination by turning the dials.
3. Decontrol number-adjusting rod and let it to return to the original position.
4. Open the lock again now your new personal code is set.
5. Make sure you note your code carefully and check that the lock functions correctly.
6. The product is also suitable for a travelling bag.

If you want to change to a new combination, repeat steps 1-5.

## ● PASSWORD TYPE LOCK



**Cablematic**