

Counter installation Guide

Counter List:

Name	Quantity	Name	Quantity
Emiter TX	1	Software CD	1
Receiver RX	1	USB Cable	1
Data Receiver DC	1	Adhesive	4
lithium batteries	2	Manual	1
antenna	1		

1. Power

3.6V lithium batteries, No charging. It could be used about 1 year.
(Open the Back cover and plug the battery of RX and TX)



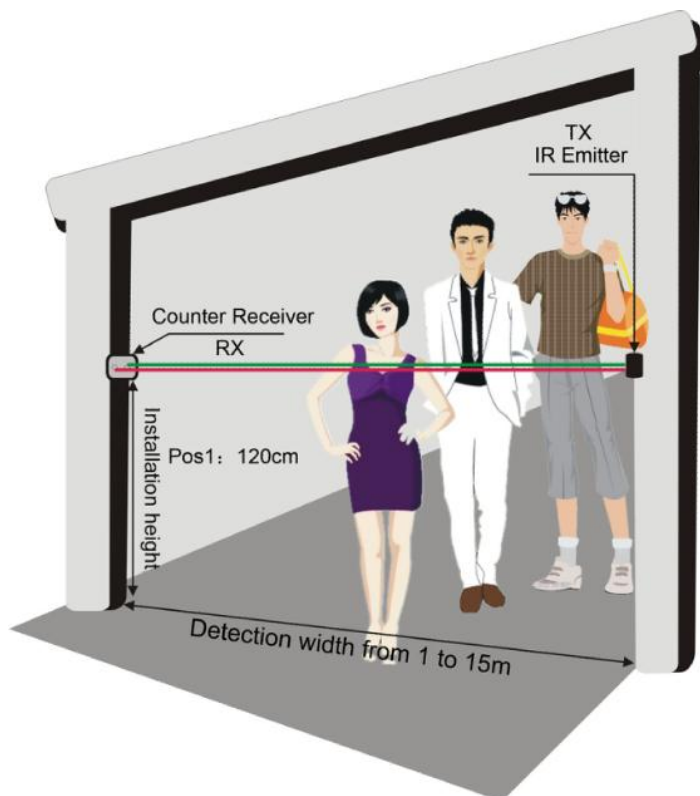
2. Fix

The counter could be stuck to the wall or door by Double Sides Adhesive Tape or fixed by two screw

3. Installation height (Important)

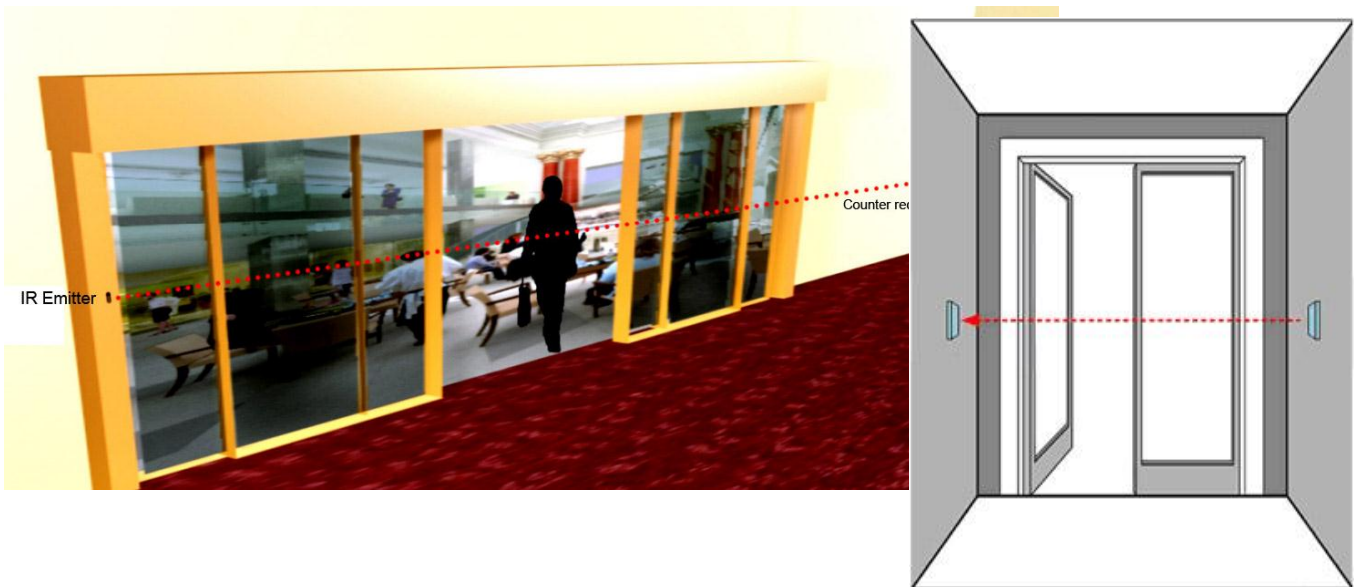
The counter works by IR(infrared rays) beam, it will count if any opaque or non-transparent objects obstructs the beam. In order to improve the counting accuracy, the installation height of the counter is important. We recommend the positions height: 120cm (Best Position)

This position height means from Arm to shoulder to a person, the counter will not be affected by arms swing.



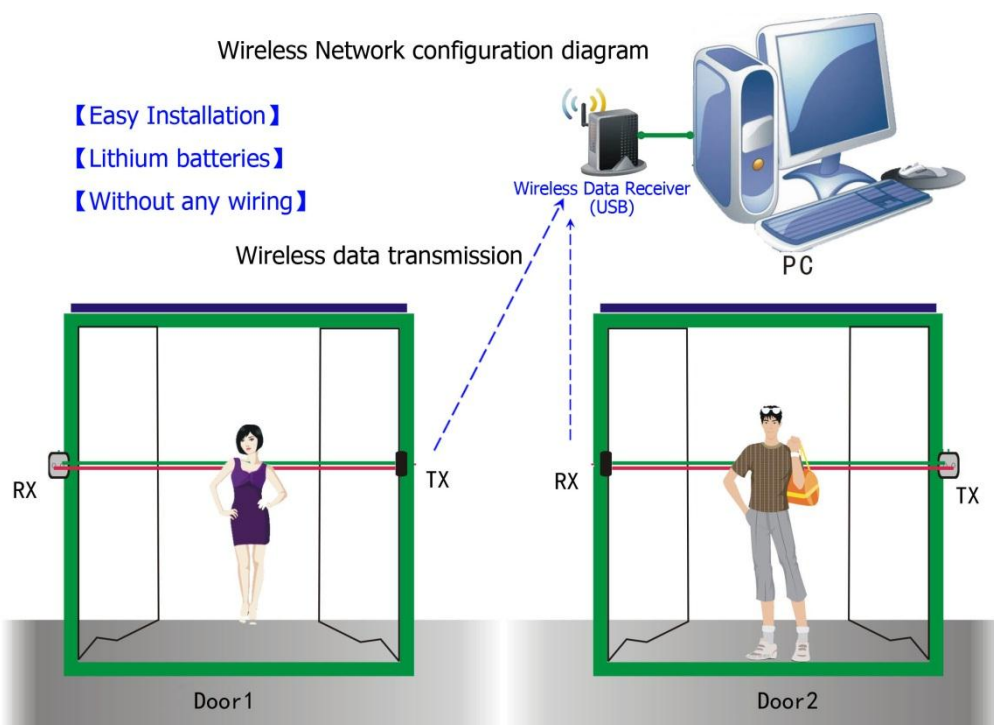
4. Installation locations

The counter could be installed as follow.



5.Data Receiver(DC)

- Data Receiver will receive all data from counter by wireless communication. The distance between counter and Data Receiver could be up to 50 meter indoor ,and longer in outdoor.
- If two shop installed Counter and the distance between is less than 500meter,it is recommend to use different Communication Frequency Channel (FC) .
- The Frequency Channel (FC) of Data receiver and Counter should same to communication. Different FC can avoid disturb.
- Data Receiver can work without the PC,and only power on and it will work and will save all data into offline area.and all data could be imported into PC by "Offline Import" in software through USB connect. And get the realtime data if the data receiver is always connected into the PC and People counting system software running.



Software Installation

A. Wireless data receiver driver installation

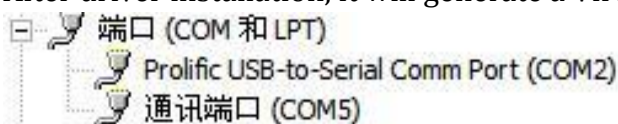
Install the driver before the receiver connecting to PC

The CDROM contain the driver for the Wireless data receiver;

click the *PL2303_Prolific_DriverInstaller_v170.exe* to finish the installation

Connect the Wireless data receiver to PC, and it will install automatically.

After driver installation, it will generate a Virtual port through USB, as follow:



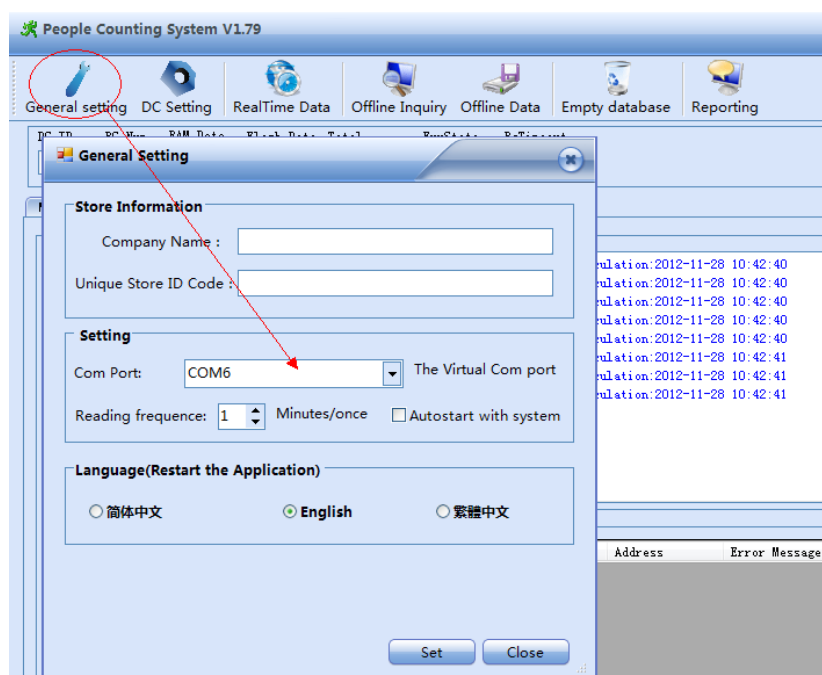
Remember the com port which used and setting in software.

B. Software application installation

1. Open the directory on CD-Rom, \English\people counting system\
2. Double click setup.exe to start installation.

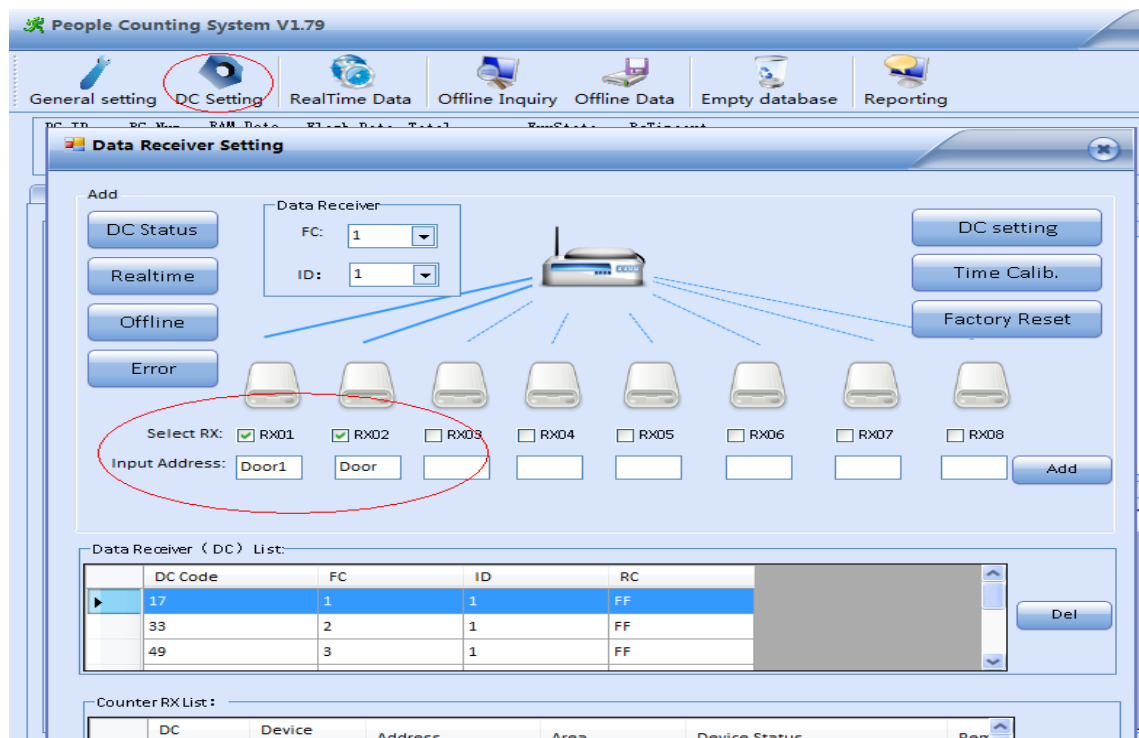
C. Application setting

1. Setting the com port and other.



2. Setting the Data Receiver (Optional)

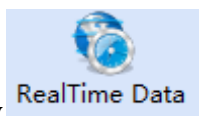
The Data Receiver with FC:01 ID:01 is already existed in the application, no setting need. If two or more counters connect to one data Receiver, you need to set as follow
Each Data receiver can connect 8 counters



- Select the data receiver by FC and ID according the label on the data receiver.
- Select (mark) the RX and input the address name to add a new counter according to the RX ID(label on side of RX) under the Data Receiver (Several RX could add in one time but no repeat)

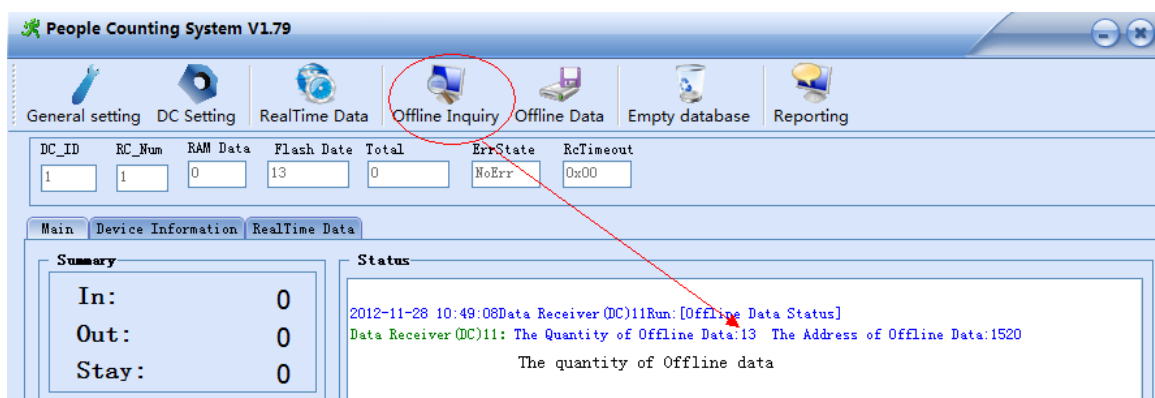
3. RealTime Data import(RAM data):

- System will import realtime data automatically by every setting minutes, or by click

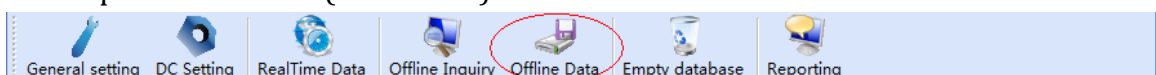


this icon to import manually.

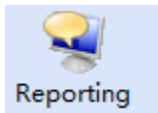
- Read Offline status



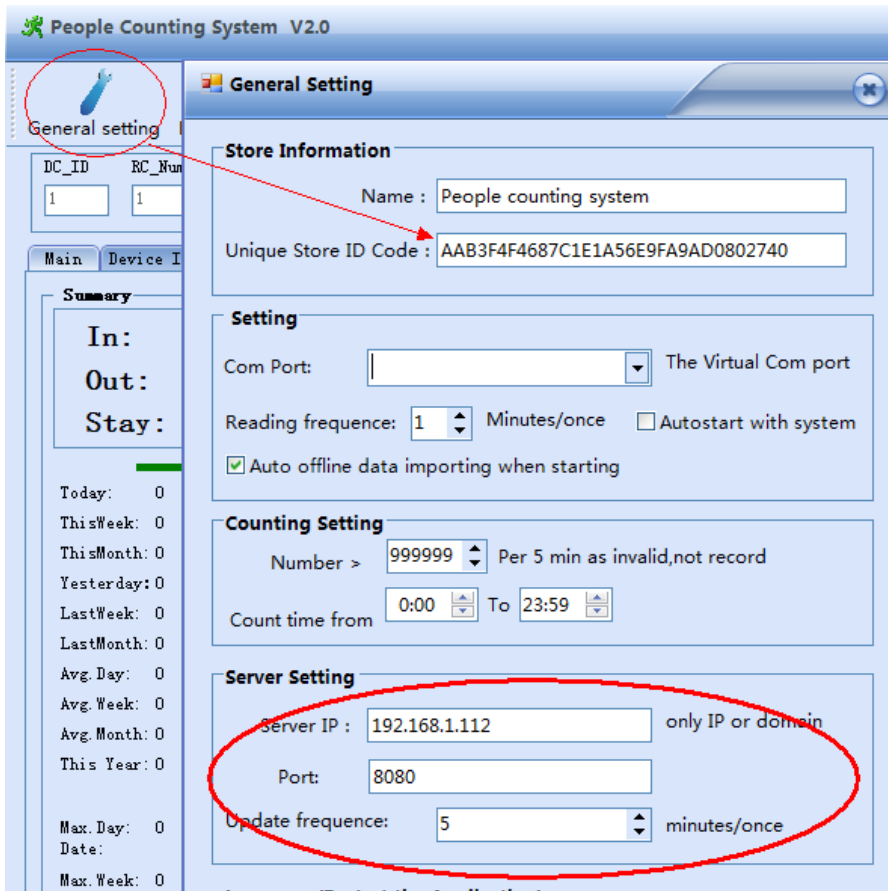
- Import Offline data(Flash Data)



All data will save to the database and detail reporting system by click this ICON



Data Upload to server setting: (Optional)



- Shop Unique ID: this ID is copy from the server reporting system “FluxStatisticsWeb”, under “Store list”-“Details”
- Remote Server:
Server IP: input the server IP or Domain.(no prefix Http://)
Port: The port number of “FluxService” in IIS

Restart the application after all setting finished , and check the server status in the right corner is “Connected”.

Remark:

- 1、 This counter can counter both in and out people and distinguish the direction
- 2、 The counter will send out the data by every 20S during the first 3 minutes, and every 5 minutes after it.
- 3、 Normal Status of Counter:

The light of RX and TX will light on several seconds and off during power on. When people go through the door, the counter will count once and the light of RX will show a flash. If the light of RX is frequent blinking, that means the IR of TX is blocked off and the counter is no more counting, pls check whether there is something covered the counter or between it. And there is an error message on software.

“No Counting, RX Infrared blocked off, Pls Check”

- 4、 Data Receiver Light Status:

There is Four Led light in the Data Receiver, When power on and running, One green light on and other green flashing. If the Yellow light on, that's means the Data Receiver has not receiver the data from the counter, the distance between counter and data receiver is too far or the counter is missing or power off.

- 5、 **Microsoft .NET Framework 3.0 or UP is needed for this Reporting System,pls be sure it is installed on this PC. You can find it on the CD-Rom disc or download from Networ.**