

Sharkoon

DG7000-G
RGB

Sharkoon



ATX PC CASE

PC Case For Demanding Gamers!



3x
140 mm
RGB LED Fans

2x
USB 3.0

Radiator-Mounting
for up to
280 mm
Possible

Graphics Cards
up to
38 cm
Installable

Features

- ATX case
- Tempered glass side panel
- Tool-free devices installation
- Optimized cable management system
- Airflow optimized case design
- Pre-installed RGB LED fans and dust filters



6-Port RGB Hub

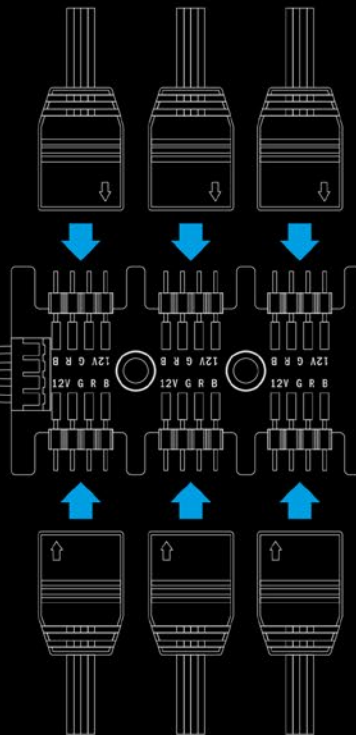
The pre-installed RGB fans, provided LED strip plus two additional RGB elements are easily controlled and synchronized inside the DG7000-G RGB via the mainboard software, thanks to the included 6-port RGB hub for mainboards with a 12V-G-R-B connector, and can illuminate up in approximately up to 16.8 million colors.



12V G R B
RGB LED

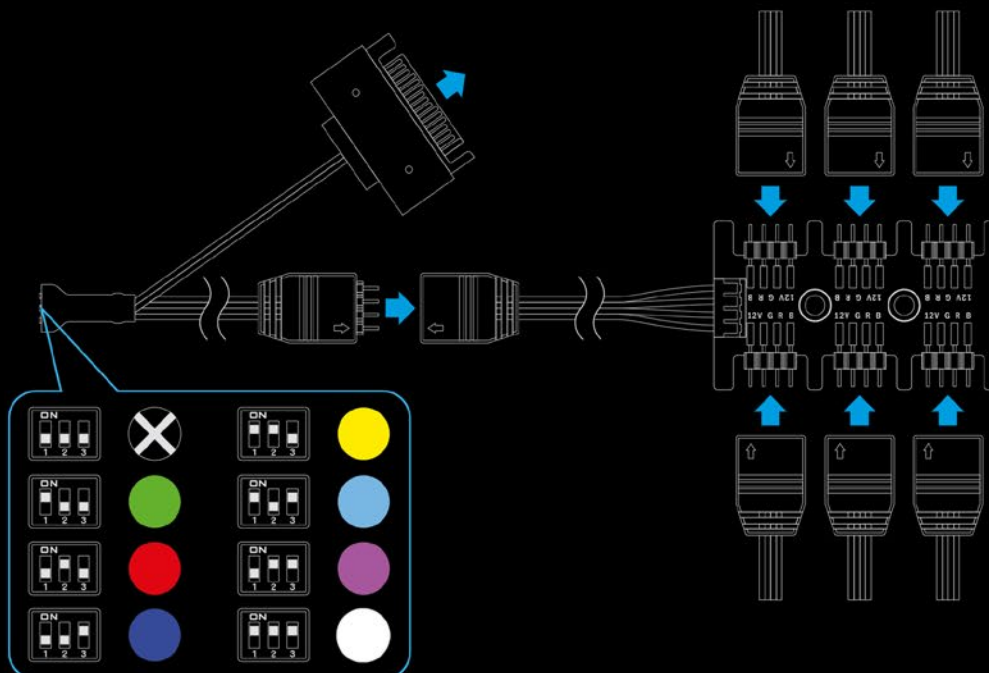


5-pin to 4-pin adapter
for mainboards with a 5-pin connector

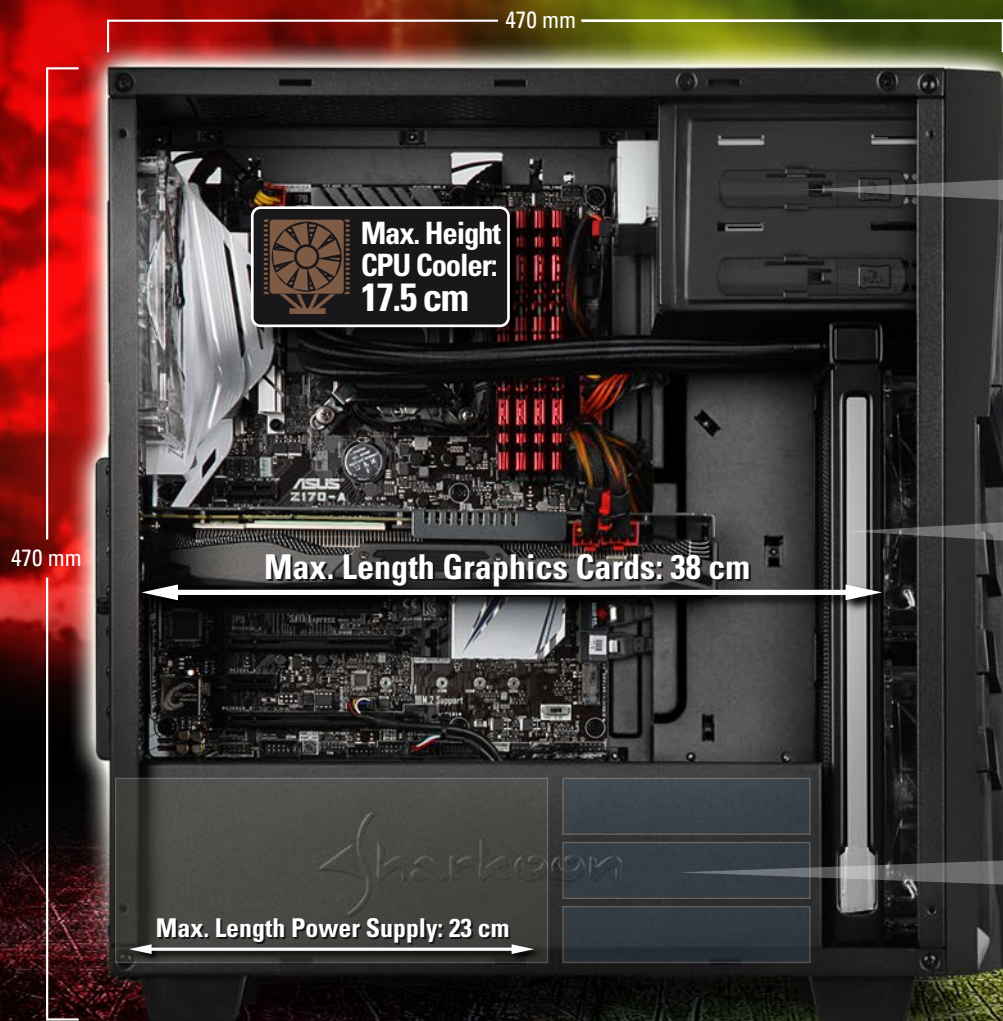


Manual Color Control

The DG7000-G RGB has a manual color control for mainboards without any 12V-G-R-B connector. Once installed inside of the case and connected to a SATA connector from the power supply, the included LED strip as well as other LED elements and the fans can be illuminated in one of six colors, or completely in white, via a handle on the manual color control.



Astounding Functionality



Vertical Supports for Two 2.5" HDD/SSDs



Mesh Slot Panel for Better Air Circulation

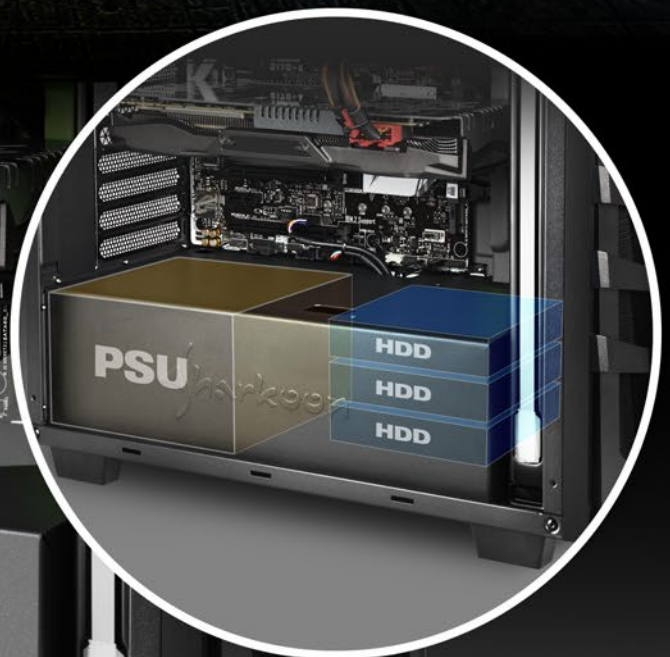


Detachable Power Supply Dust Filter and Noise Dampening Rubber Feet



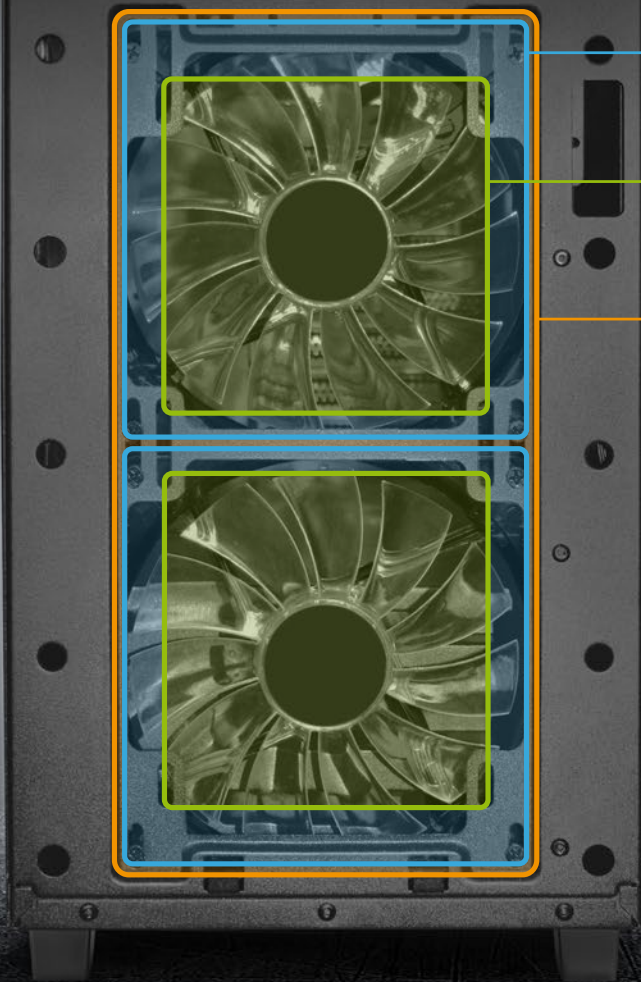
Systematic Arrangement

Thanks to an optimized cable management system and discreet panels on the bottom of the case, the DG7000-G RGB always ensures a tidy appearance.



Variable Fan Configuration

Front Panel

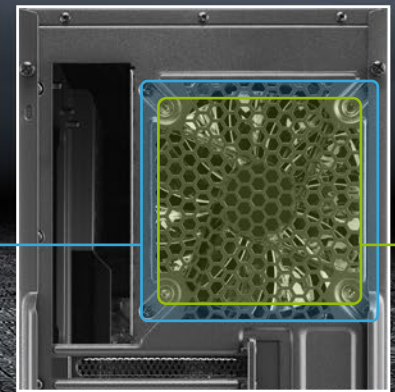


2x 140 mm RGB LED Fans
(Pre-Installed)

2x 120 mm Fans
(Optional)

280 mm Radiator
(Optional)

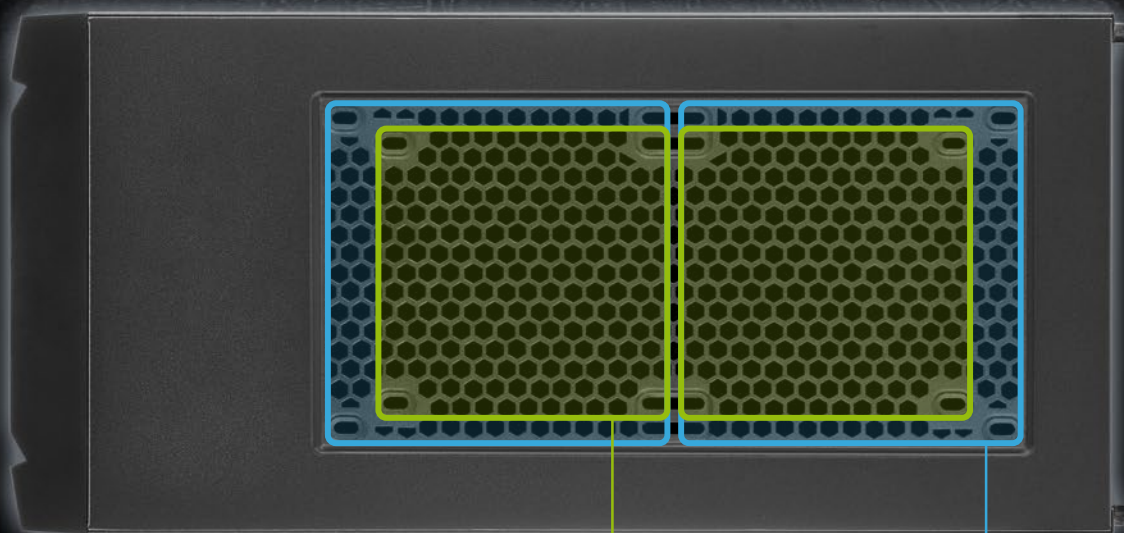
Rear Panel



1x 140 mm RGB LED Fan (Pre-Installed)

1x 120 mm Fan (Optional)

Top Panel

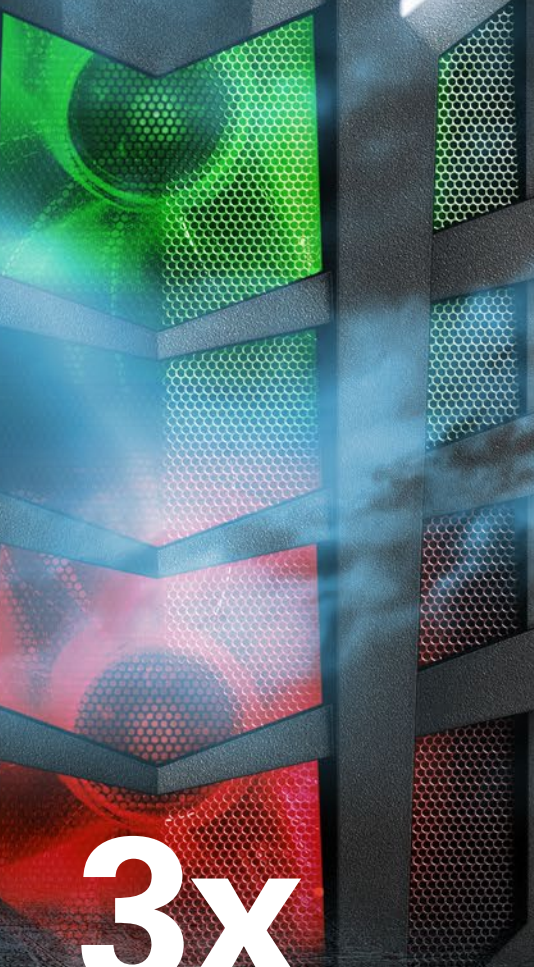


2x 120 mm Fans
(Optional)

2x 140 mm Fans
(Optional)



Sharkoon



3x
140 mm
RGB
LED Fans

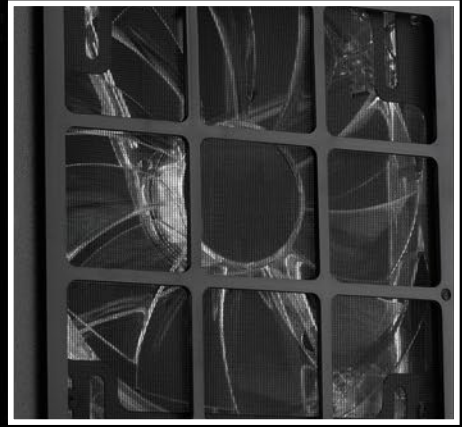
Pre-Installed Dust Filters For Optimal Interior Protection



Removable Dust Filter



Dust Filter With Magnetic Fastener on the Top Panel



Detachable Dust Filter in the Front Panel

DG7000-G

RGB

sharkoon

Specifications

General:

■ Form Factor:	ATX
■ Expansion Slots:	7
■ Interior Painting:	✓
■ Tool-Free Devices Installation:	✓
■ Cable Management System:	✓
■ Side Panel Tempered Glas 4 mm:	✓
■ Weight:	8.2 kg
■ Dimensions (L x W x H):	47 x 21 x 47 cm

I/O:

■ USB 3.0 (Front):	2
■ USB 2.0 (Front):	2
■ Audio (Front):	✓

Drive Bays:

■ 5.25":	1
■ 5.25" or 3.5":	1
■ 5.25" to 3.5" Bay Cover:	1
■ 3.5":	1
■ 3.5" or 2.5":	2
■ 2.5":	2

Fan Configuration:

■ Front Panel:	2x 140 mm RGB LED Fans (Pre-Installed) or Radiator (Optional)
■ Rear Panel:	1x 140 mm RGB LED Fan (Pre-Installed)
■ Top Panel:	2x 120 mm or 2x 140 mm Fans (Optional)

Compatibility:

■ Mainboard:	Mini-ITX, Micro-ATX, ATX
■ Max. Length Graphics Cards:	38.0 cm
■ Max. Height CPU Cooler:	17.5 cm
■ Max. Length Power Supply:	23.0 cm
■ Max. Height Radiator incl. Fan (Front):	5.7 cm

Package Contents:

DG7000-G RGB, accessory set, 6-port RGB hub, 5-pin to 4-pin adapter, manual color control, RGB LED Strip S1, manual



Shipment Box

Packing Unit: 1
Dimensions (L x W x H): 510 x 275 x 535 mm
Weight: 9.33 kg
Customs Tariff No.: 84733080
Country of Origin: China

DG7000-G RGB



DESIGNED IN
GERMANY

www.sharkoon.com