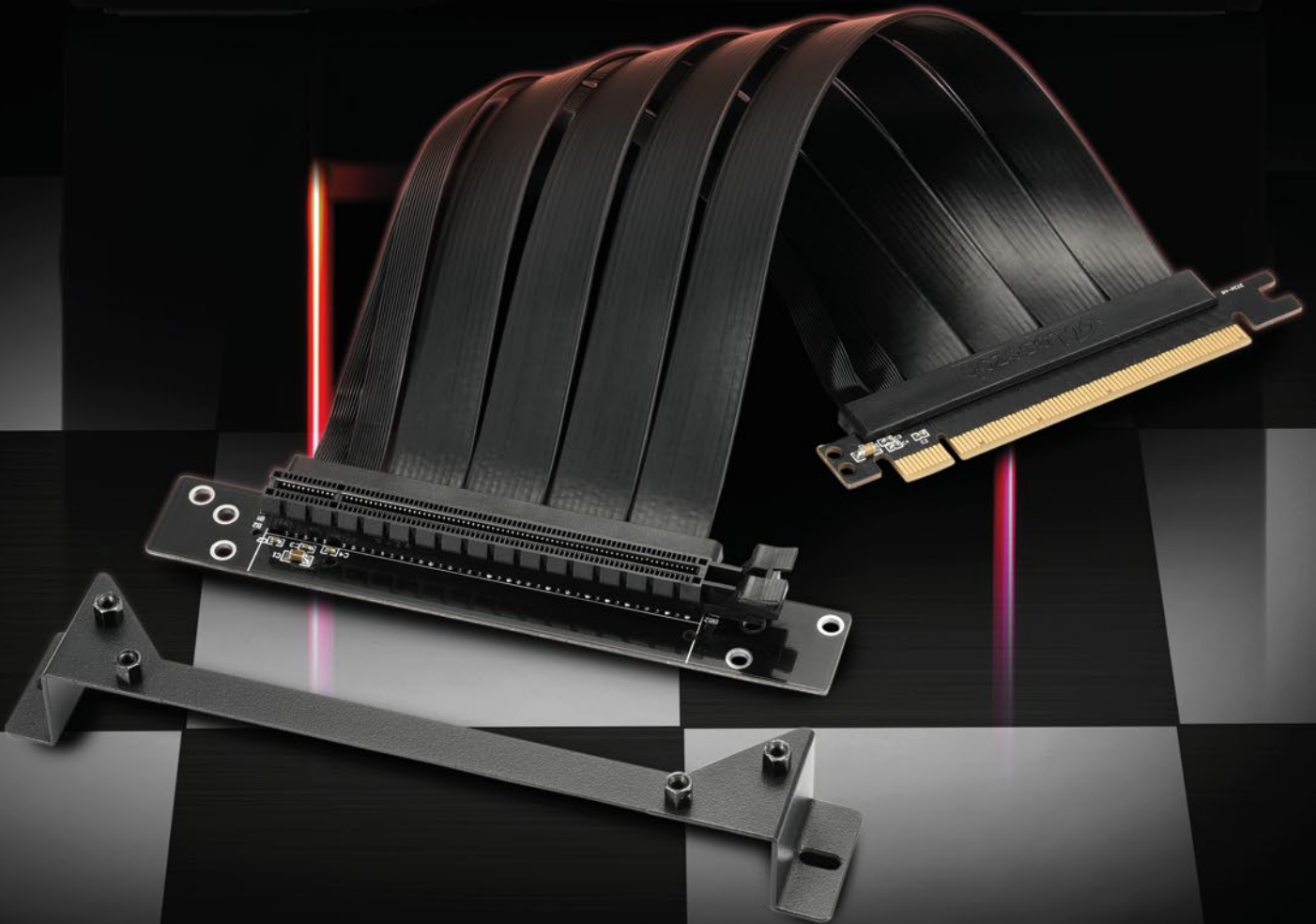


Sharkoon

Vertical Graphics Card Kit

Sharkoon



ELITE
SHARK

for ELITE SHARK series

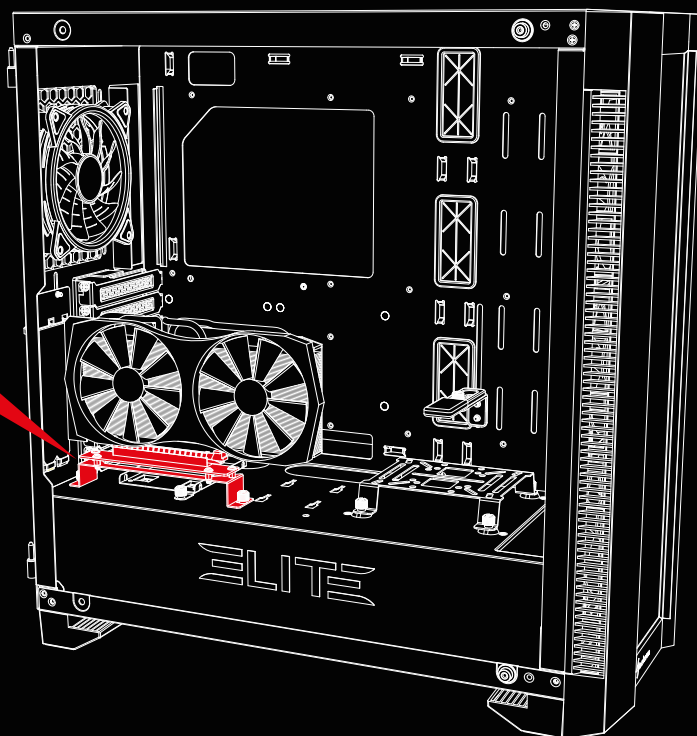
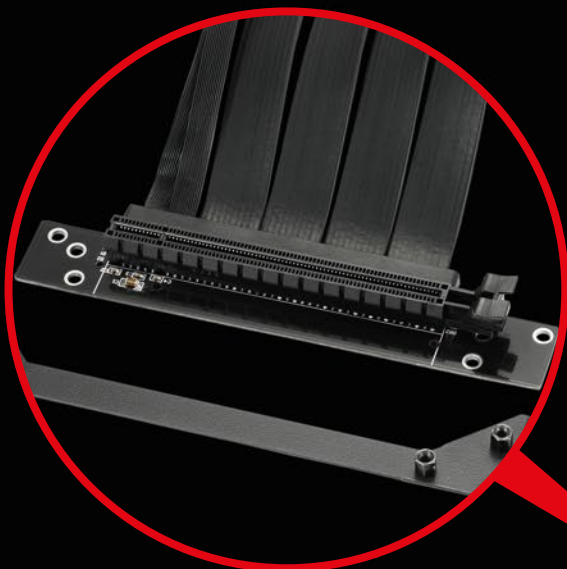
MAKE YOUR GRAPHICS VISIBLE



The Sharkoon Vertical Graphics Card Kit allows graphics cards to be vertically mounted quickly and easily. Illuminated graphics cards can thus be optimally presented from their best side! The installation kit was especially developed for the ELITE SHARK series and consists of a mount for the graphics card and an extra-long riser cable. The mount is simply screwed onto the power supply tunnel, and the riser cable is then connected to the mainboard and the graphics card.

SIMPLE INSTALLATION

The Vertical Graphics Card Kit finds the perfect fit in ELITE SHARK cases as it has been especially designed for this series. Due its practical design, vertical graphics cards are quickly ready to use.



EXTRA-LONG RISER CABLE

The riser cable has been designed to be especially long and flexible. It can thus be installed over the space needed for any horizontally mounted add-on cards. The expansion slots for these thus remain free and can be used even after a graphics card has been mounted vertically.



SPECIFICATIONS

General:

■ Material:	Metal (Graphics Card Holder)
■ PCIe Support:	PCIe 3.0
■ PCIe Slot Compatibility:	x16
■ Max. Data Transfer Rate:	8 Gbit/s
■ Gold-Plated Connectors:	✓
■ Cable Length:	28 cm

Package Contents:

- Graphics Card Holder
- PCIe 3.0 x16 Riser Cable
- Mounting Screws



Vertical Graphics Card Kit



ELITE
SHARK

for **ELITE SHARK** series

www.sharkoon.com