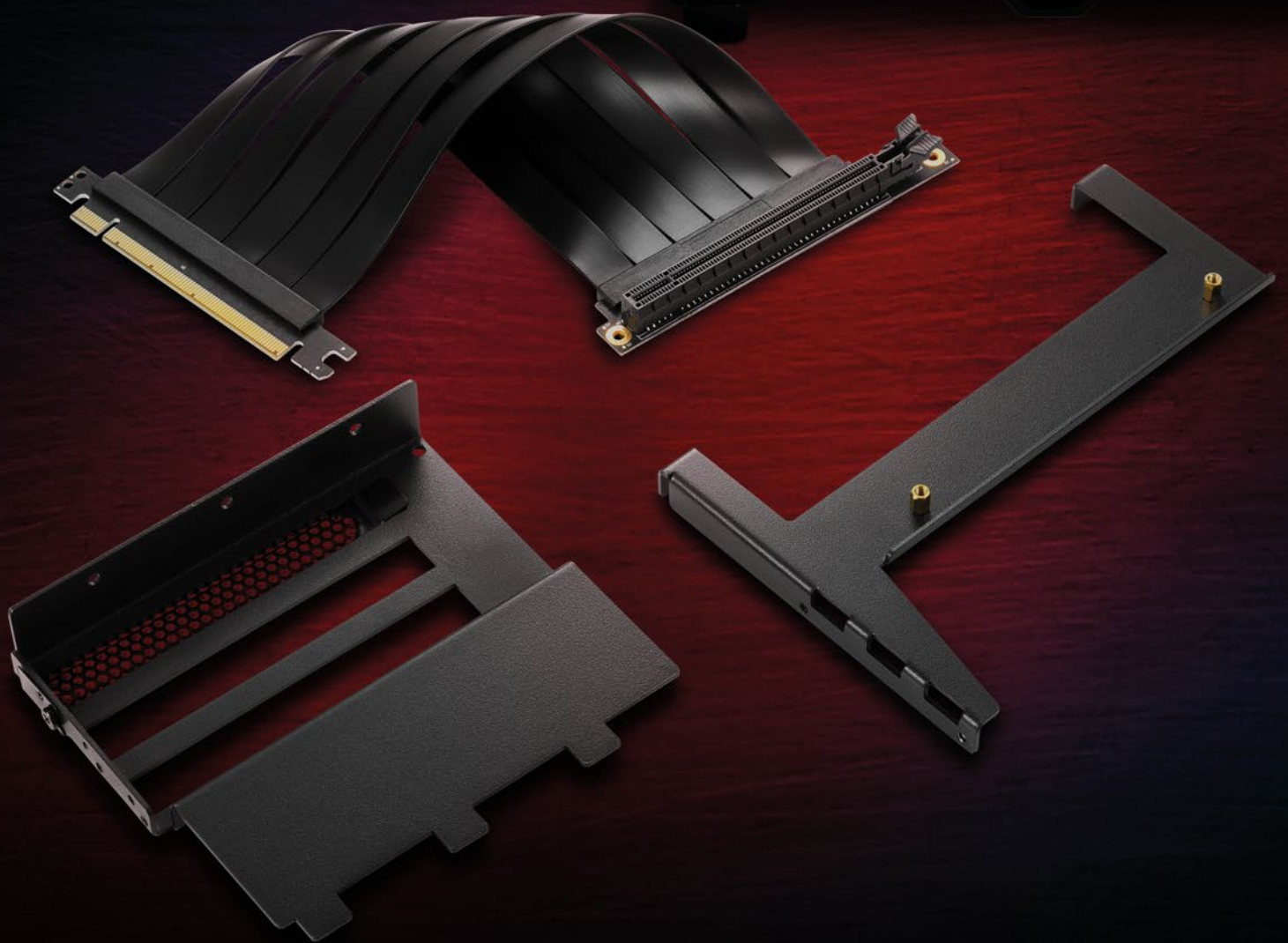




# ANGLED GRAPHICS CARD KIT



COMPATIBLE WITH

**REVE000**  
ATX PC CASE



## MAKE YOUR GRAPHICS VISIBLE

For its REV300 PC case, Sharkoon offers the Angled Graphics Card Kit as an optional addition. With this, an RGB graphics card can be integrated parallel to the mainboard. Due to the vertical mounting, the illumination of the graphics card can be strikingly displayed behind the glass side panel. The vertical installation also has the advantage of an even better airflow within the PC case. The kit, along with the riser cable, can be attached to the mainboard tray without any problems.



# EASY INSTALLATION

Since the Angled Graphics Card Kit was especially designed for the REV300, the installation is very easy. The mounting bracket is simply attached to the mainboard tray, while the riser cable is connected to the mainboard and the graphics card.



# IDEAL FOR SHOWCASING

In the REV300, high-quality RGB graphics cards come into their own, thanks to the Angled Graphics Card Kit. The kit will allow the card's impressive colors to be especially well presented from behind the tempered glass side panel.



# SPECIFICATIONS

## General:

■ Material:	Metal (Graphics Card Holder)
■ PCIe Support:	PCIe 3.0
■ PCIe Slot Compatibility:	x16
■ Max. Data Transfer Rate:	126.1 Gbit/s
■ Gold-Plated Connectors:	✓
■ Cable Length:	23 cm

## Package Contents:

- Angled Graphics Card Kit
- PCIe 3.0 x16 Riser Cable
- Mounting Screws



# ANGLED GRAPHICS CARD KIT

COMPATIBLE WITH

**REVEED**  
ATX PC CASE

[www.sharkoon.com](http://www.sharkoon.com)