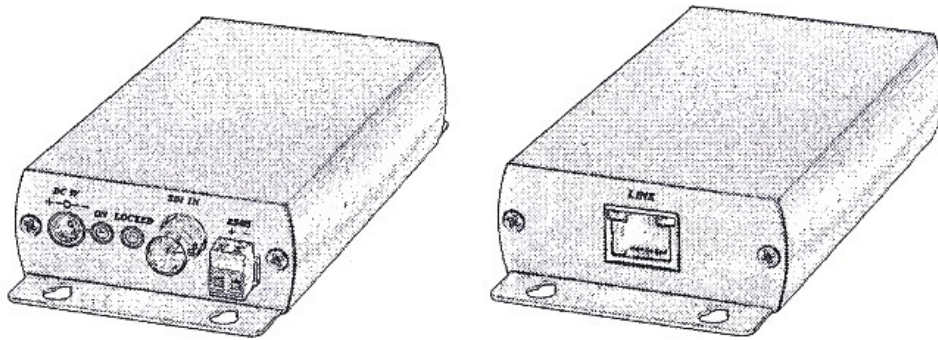


HD-SDI CAT5 Extender Series

ITEM NO.: SDI05A



HD-SDI CAT5 Extender is a active devices which use CAT5e/CAT6 cable to send HD-SDI signals up to 100m. It is perfect to send HD CCTV over existing CAT5 cable Applications include HD-CCTV, broadcasting, HD camcorder, studio-to-studio, post production, live events, medical imaging displays, and medical imaging...etc.

SDI05A HD-SDI CAT5 Extender with Data

- To send HD/SD-SDI signal over CAT5e/6 UTP cable.
- Built in RS485 data.
- Support SDI (SMPTE 259M), HD-SDI (SMPTE 292M).
- Up to 100 meters via CAT5e/CAT6 cable at HD-SDI resolution.
- **Optional model: SR01 signal repeater for longer distance application.**
- Built in Equalizer to increase the working distance and signal reliability.

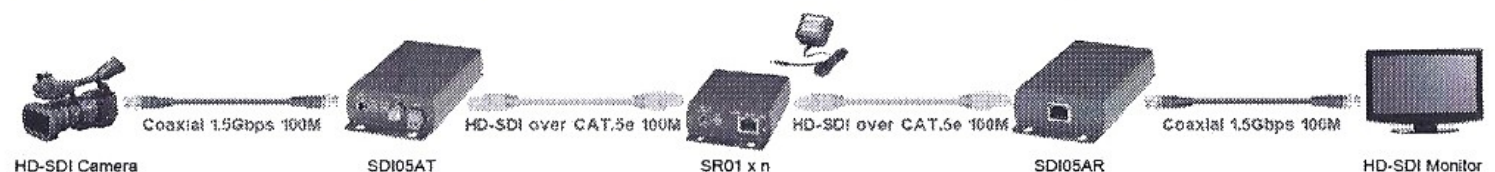
Installation View:



Optional Model: SR01 Signal Repeater (order separately)

- Extend data signal for an additional 120meters.
- Application for SDI05A signals for extra long range transmission.
- Ability to cascade connection with multiple SR01 for long range transmission
- Built in LED status indication.
- External power required.
- Plug and play for easy installation.

Work with SDI05A HD-SDI CAT5 Extender:



HD-SDI over Coax Cable :

BUY ON
www.cablematic.com

HD-SDI Coax cable recommend to use high quality RG6U, 75Ω Coaxial Cable, low quality coaxial cable or BNC connector may cause signal loss and effect transmission distance and reliability.

| Max. distance via high quality 75Ω Coaxial Cable (Belden 1694A RG6U Testing) | |
|--|------|
| SD resolution (270Mbps: 480i,576i) | 200M |
| HD resolution (1.45Gbps:720p,1080i,1080p@24/25/30Hz) | 100M |

HD-SDI over CAT5 Cable :

Video Link cable using high quality CAT5E UTP/STP/FTP or CAT6 UTP cable.
 HD resolution (1.45Gbps:720p,1080i,1080p@24/25/30Hz): Max. distance 100M
 To add model no: SR01 signal repeater for longer distance application.

SDI05AT LED Indication:

Green On Power on
 Blue On SDI signal input

RJ45 LED Indication:

Green On Connection
 Yellow Flash Data Transmission

SDI05AR LED Indication:

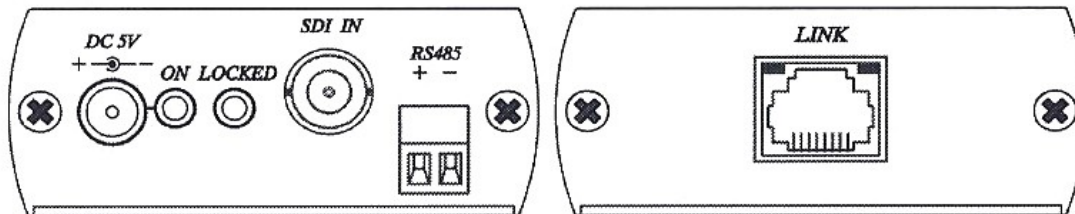
Green On Power on
 Blue On SDI signal output

RJ45 LED Indication:

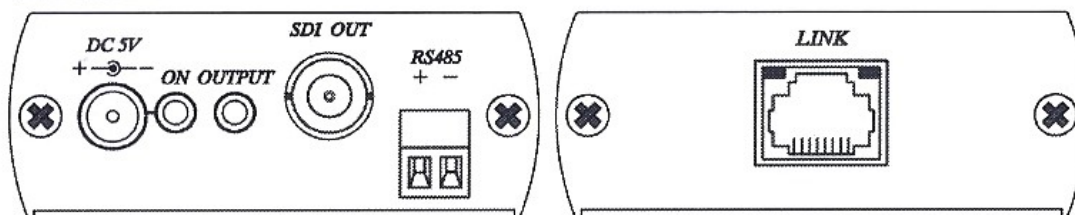
Green On Connection
 Yellow Flash Data Transmission

Panel View:

SDI05AT



SDI05AR



RJ45 Define:

Link Cable (TIA/EIA-568-B)

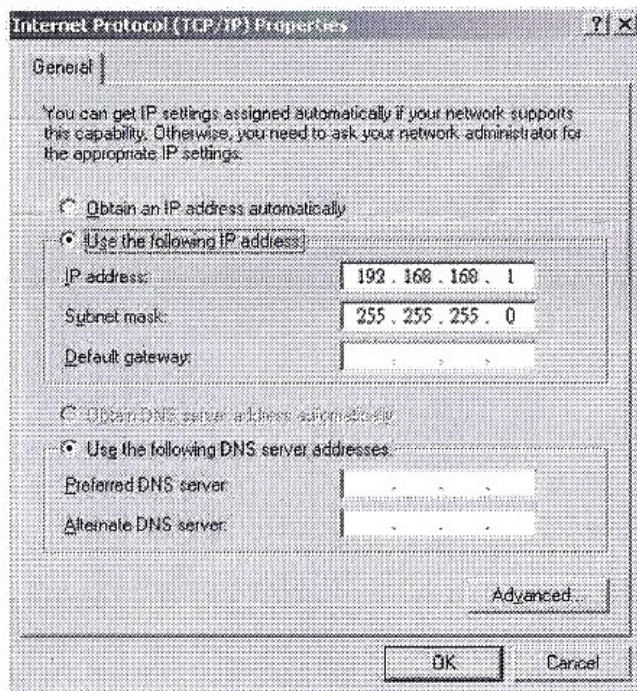
| | |
|-----------------|----------|
| 1. Orange-white | Data 1 + |
| 2. Orange | Data 1 - |
| 3. Green-white | Data 2 + |
| 4. Blue | N/C |
| 5. Blue-white | N/C |
| 6. Green | Data 2 - |
| 7. Brown-white | N/C |
| 8. Brown | N/C |

RS485 Setting :

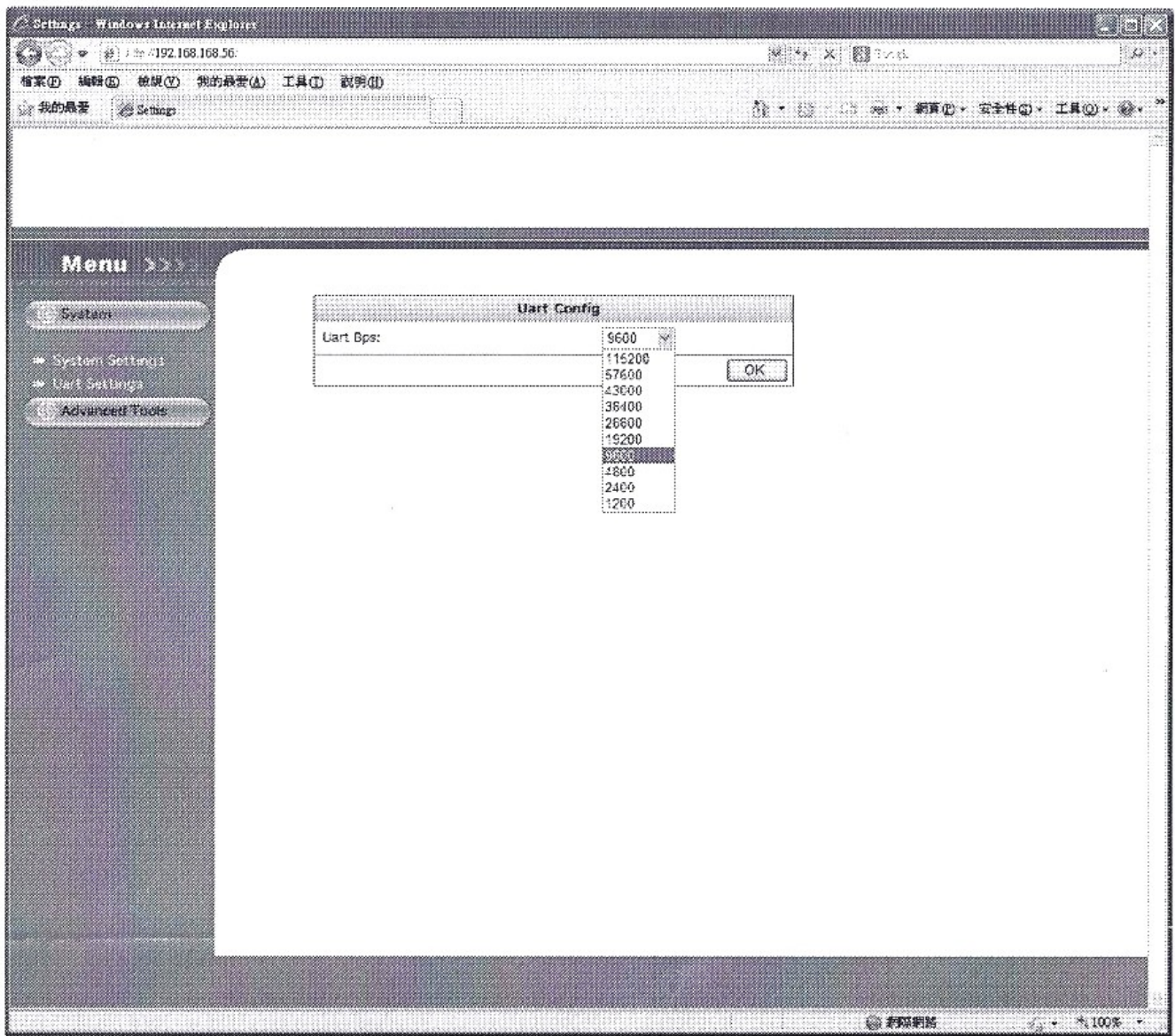
SDI05A RS485 is half duplex mode, the Data Baud Rate Default is 9600. If need to change the different data Baud rate, please go to webpage to change the setting.

The setting step as below:

1. Under PC internet link, change IP address to 192.168.168.1, change subnet mask to 255.255.255.0



2. After setting, put the IP as below
192.168.168.55 → SDI05AT Management webpage
192.168.168.56 → SDI05AR Management webpage
3. After login webpage select System→Uart Settings: to find the data rate you want to change, then press OK.



Caution:

The cabling must away from any equipment with electromagnetic wave, i.e.: microwave, radio equipment, high voltage.

Specification:

| ITEM NO | SDI05AT | SDI05AR |
|------------------------|--|---------|
| Video Input / Output | BNC x 1 (75 Ω) MALE | |
| Support Resolution | SMPTE 259M - SD-SDI(270 Mbps) SMPTE 292M - HD-SDI(1.485 Gbps) | |
| Transmission Interface | RJ45 x 1 | |
| RS485 Interface | Terminal x 1 | |
| Transmission Distance | 100 meters | |
| Power Supply | DC 5V 2 Amp | |
| Power Consumption | 1200mA | |
| Temperature | Operation: 0 to 55°C, Storage: -20 TO 85°C, Humidity: up to 95% | |
| Dimensions mm | 67 x 140 x 27 | |
| Weight g | 230 | |

