

Zigbee device Configuration manual

For better help you to use our SZ02 ZigBee device, we will introduce how to use these module as following three parts:

- 1. SZ02 series**
- 2. How to configuration**
- 3. Technical support**

You just need do the the opertaions as the munual, then you can configure the module successfully. Finish the configuration, connect to your device, power supply, then can self organize the network to do the wireless communication with coordinator.

1. SZ02 series ZigBee device



2. How to do configuration

1) **Firstly**, Power supply and connect the wire cable.



USB interface for data transmit and power supply

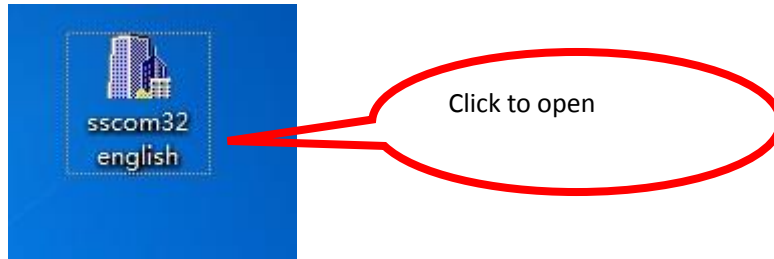


power supply and RS232 interface

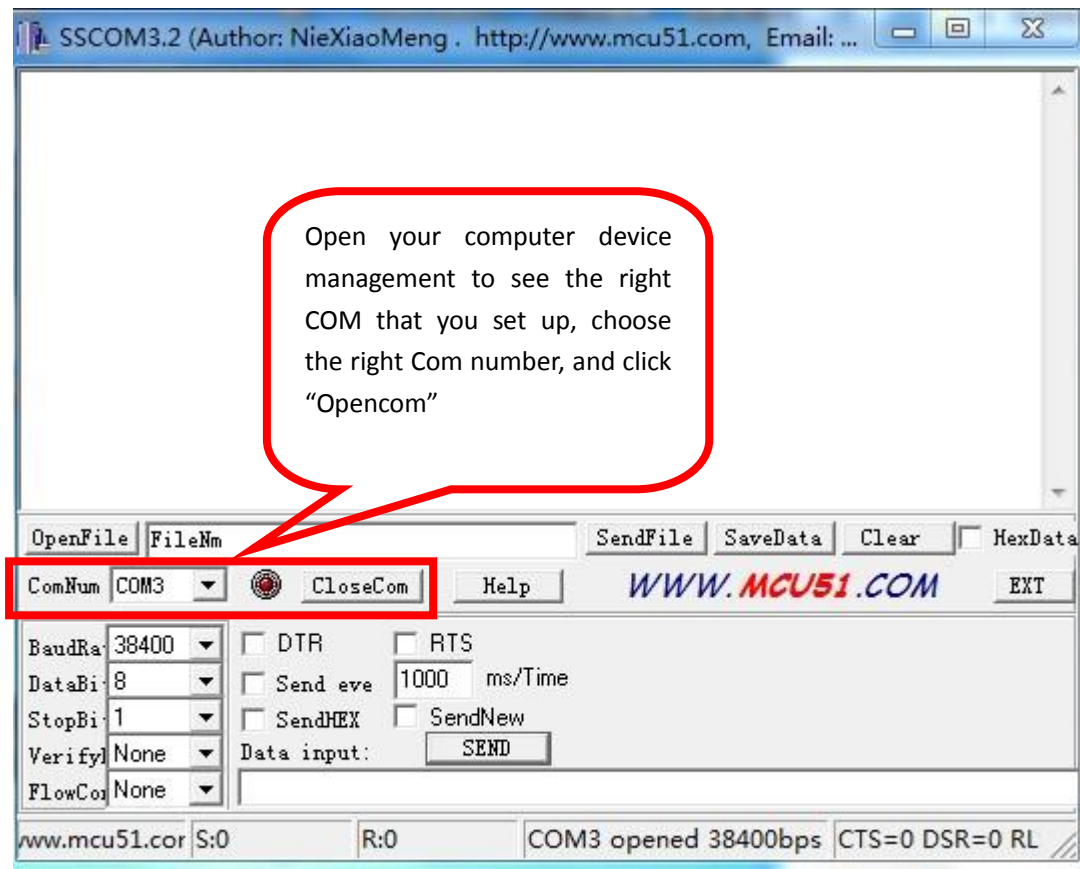


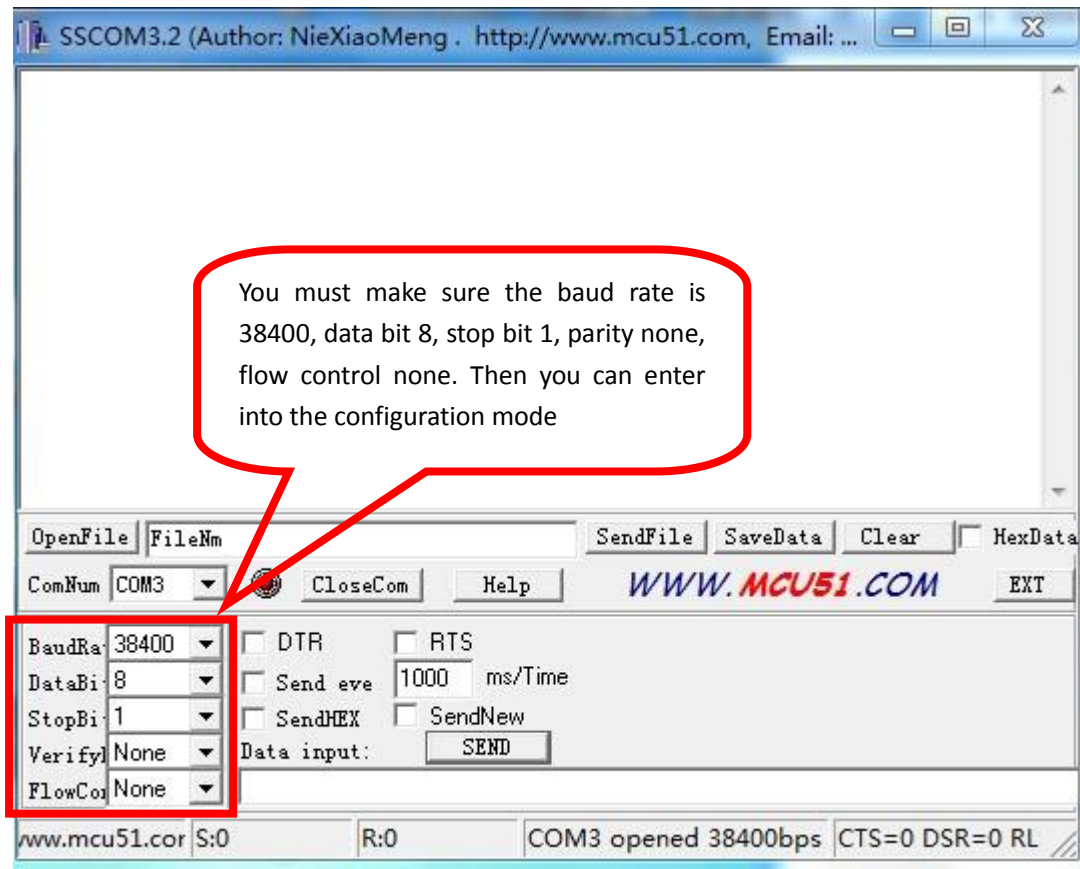
Power supply and RS485 interface

2) **Secondly**, put the RS232 cable or USB cable to connect your computer ,And then open the SSCOM32

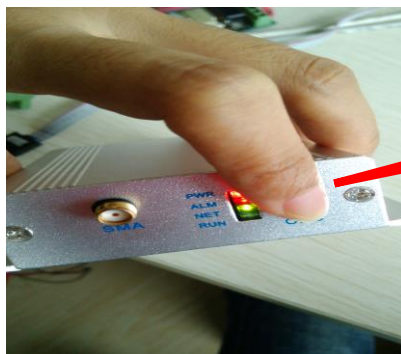


You will see the following picture:





3) **Thirdly**, enter into the configuration mode

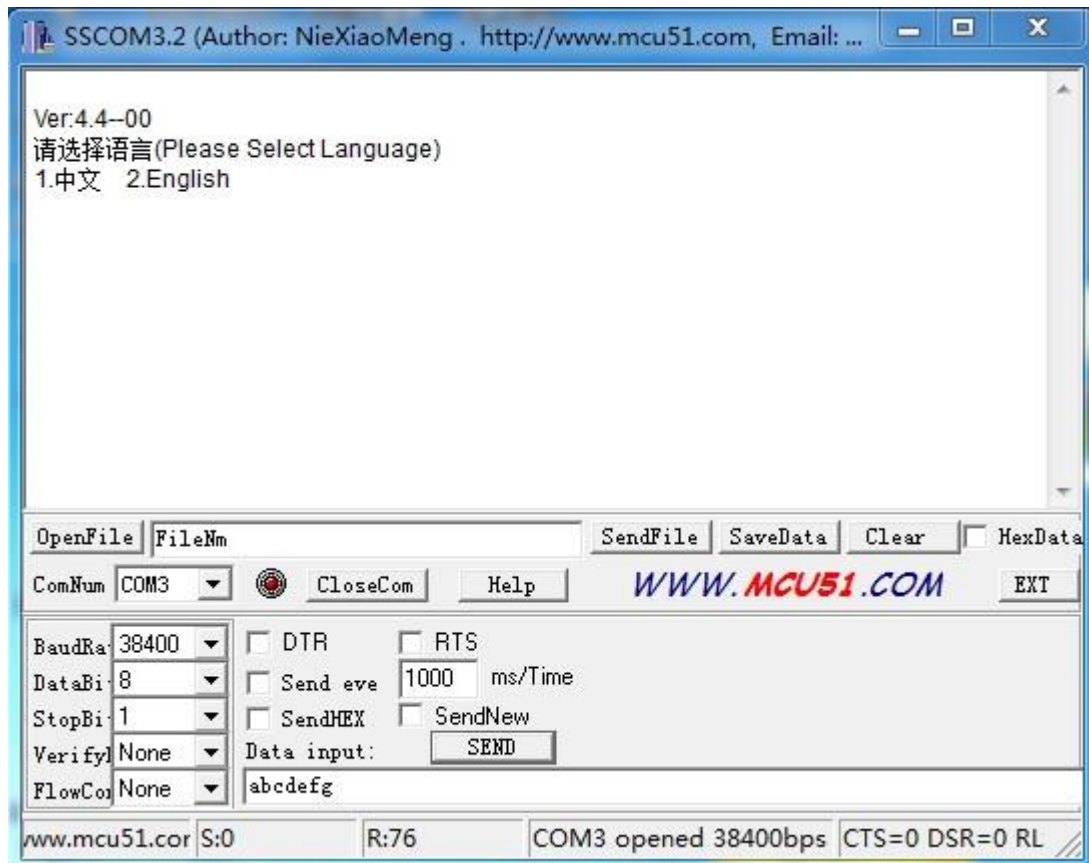


Press the "CFG" key 3 seconds to enter into the configuration mode

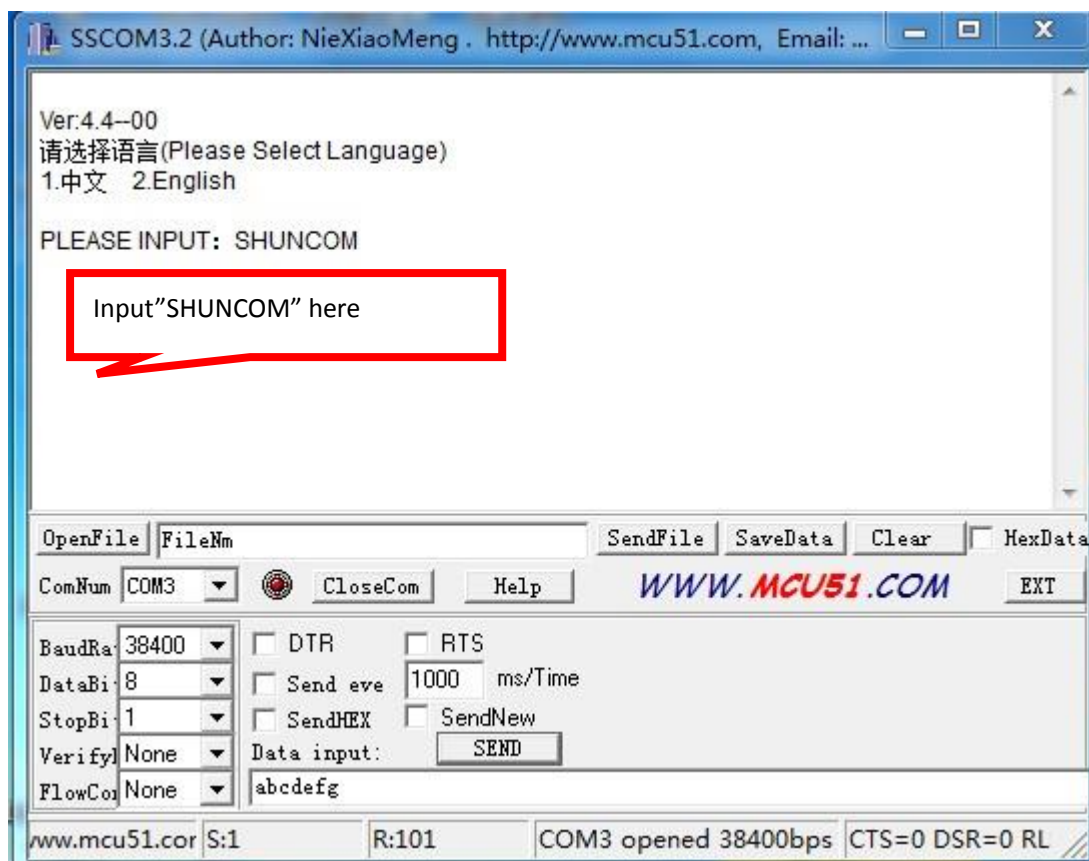


When you enter into configuration mode, the light of power and alarm will be bright , the net light and run light will be flash at the same time.

It will appear the following picture:

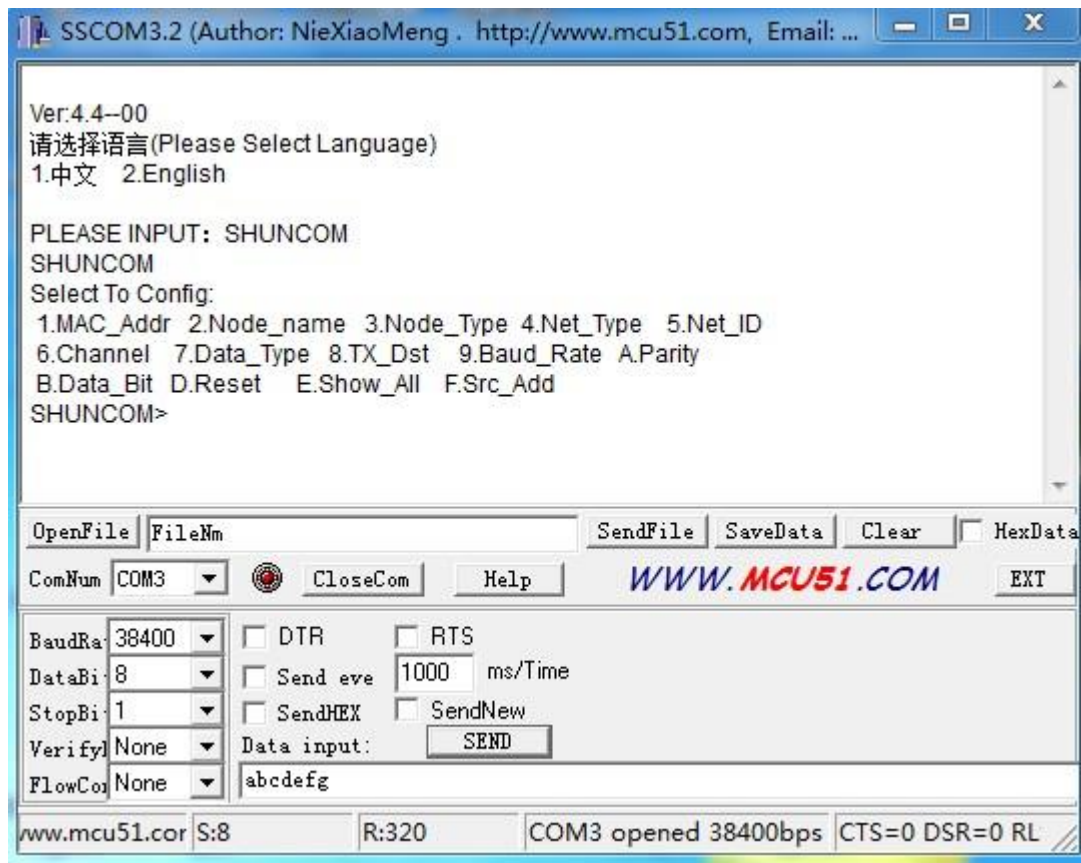


Input " 2 " to choose language "English"

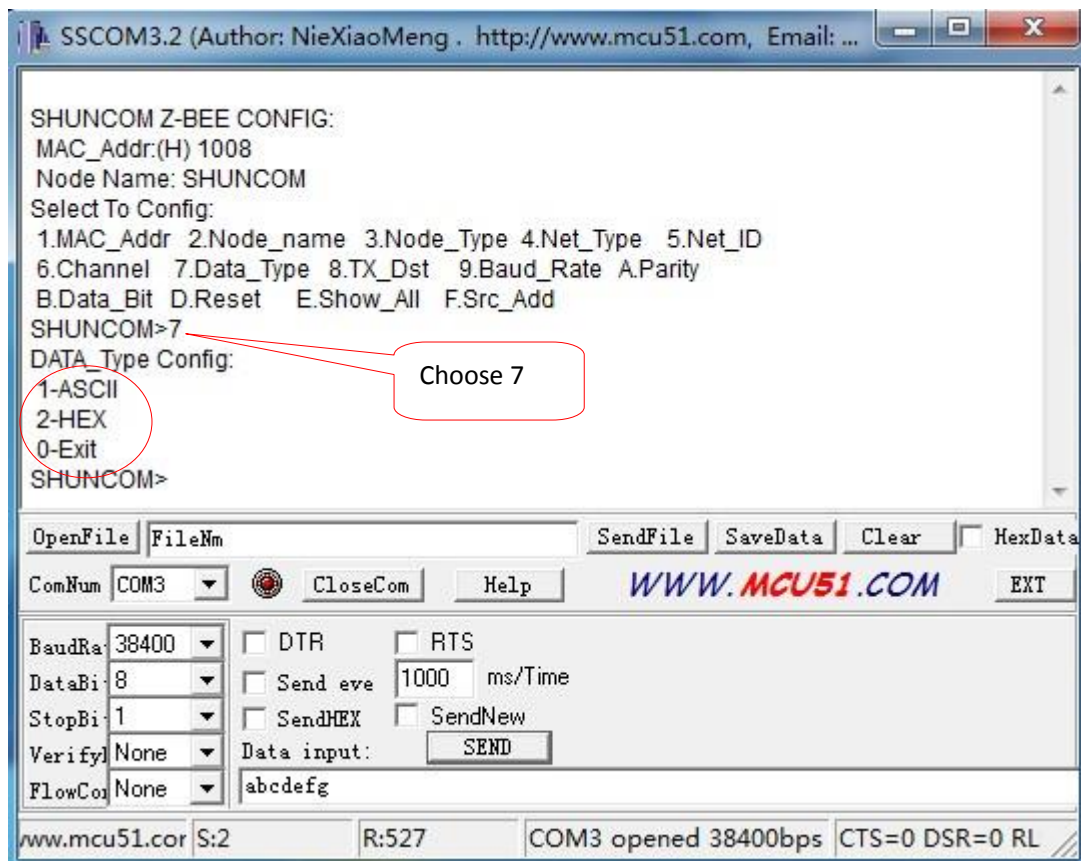


Input "SHUNCOM"

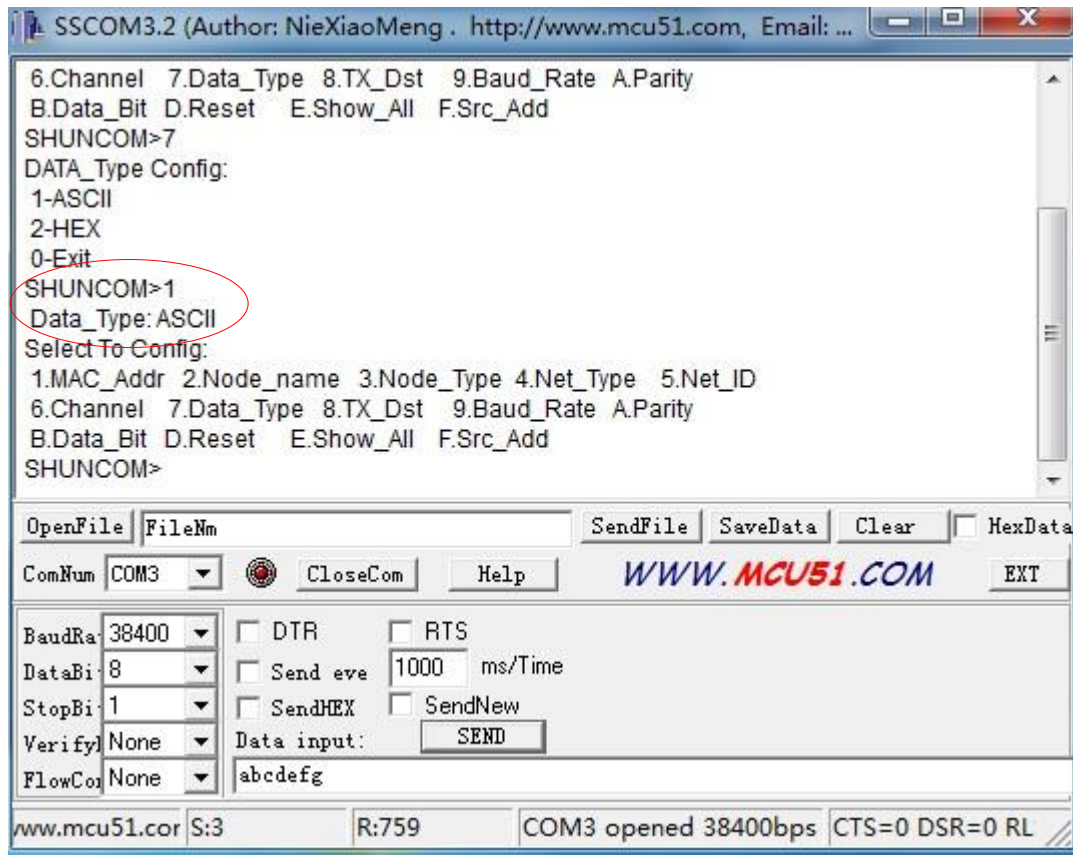
Then you will see the picture as follows:



If you want to amend the parameter (**7.Data_Type**),you can choose **7** as follows:



And then you can choose **1-ASCII**, **2-HEX**, **0-Exit**, such as we choose **1**



And now you amend the parameters successfully.

If you need other more parameter to set, just choose the number (1, 2, 3, 4,) to input on your computer, then you can do the configuration.

The tips for the configuration

1. The coordinator's MAC address is 0000. The MAC address of the non-coordinators (router and end device) can be set optionally from 0001 to FFFE, but the routers' MAC addresses must be different in the same network, or else they cannot communicate.
2. Each network is defined with a unique Channel and Net ID. The channel and the Net ID must be the same in the unique network. And the baud rate, parity, data bit should be consistent with the connected devices.

Notes: the module will be out of the configuration mode when there is no more operation within 60 seconds. All the settings will stay unchanged.

3. Technical support

Shanghai Shuncom Electronic Technology Co.,Ltd

Add: 8/F, No.4 building, No.3000 Longdong Avenue, Pudong New Area, Shanghai, China

Tel: 021-33933988/78/68/58/28/18

Fax: 021-33933988-6808

Email: 6822@shuncom.com, 6835@shuncom.com, ivy6831shuncom@gmail.com

Website: www.shuncom.com