

## 9901 Serial & Parallel ...PCIe I/O Card

|           |                        |        |             |
|-----------|------------------------|--------|-------------|
| 9901PR2   | -2 Serial + 1 Parallel | 9901R2 | -2 Serial   |
| 9901R1    | - 1 Serial             | 9901P  | -1 Parallel |
| 9901P-PR2 | -2 Serial + 1 Parallel |        |             |

### Description

- Fully compliant with PCI Express Base Specification Revision 1.0a
- Compatible for PCI Express Card application requirements.
- PCIe Multi Function Peripheral Controller with x1 Lane Interface.
- Support four PCIe functions.
- Supports PCIe Power Management.

### Serial:

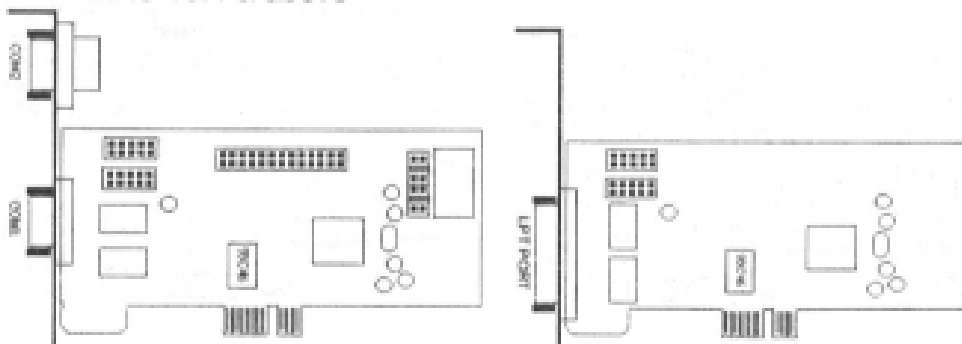
- Two 16C450/550 compatible UART.
- Bi-directional speeds from 50 bps to 16Mbps/port.
- Full Serial modem control.
- Serial port transceiver shutdown support.

### Parallel:

- Multi-mode IEEE1284 compliant controller (SPP)
- Faster data rates up to 1.5Mbps for parallel

### Software:

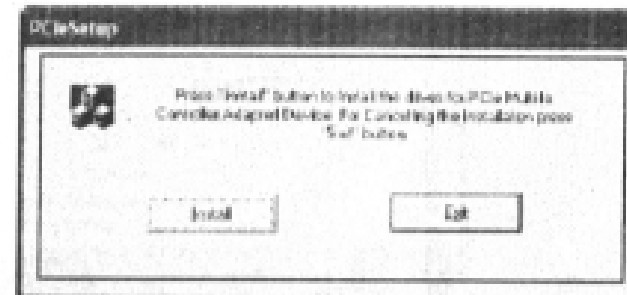
- Supports 32bit 2000/XP/2003 Server/VISTA
- Supports 64bit XP/2003 Server/VISTA
- Linux Kernel 2.6.11 & above
- MAC 10.4 & above



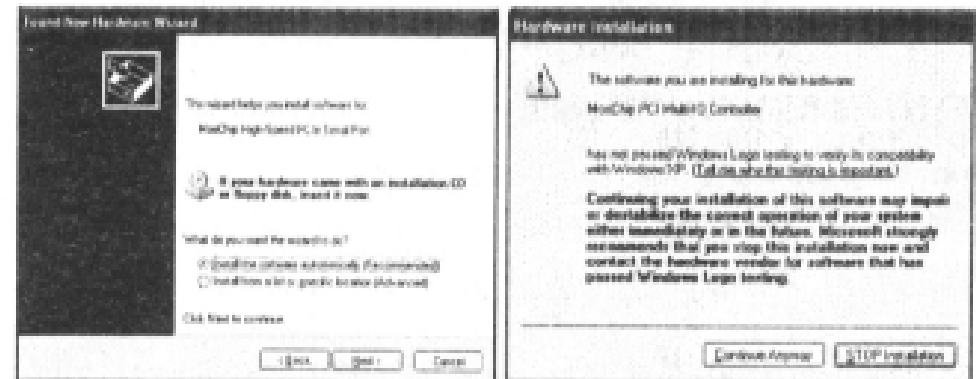
The card is specially designed to allow power output from the ninth pin of the connector to enable power up of the connected devices without power adapter. The card allow user to set each individual port with 5V, 12V, or RI (no power). User can also choose to draw the needed power from the external system power supply.

## Windows 2000/XP Driver installation

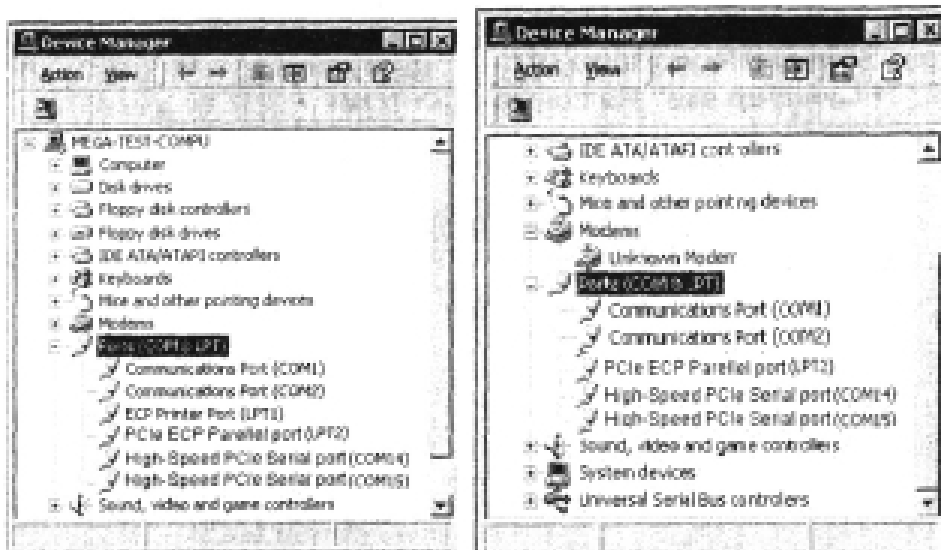
1. Go to **Start** and Run .2000(XP).
2. Run "PCIsetup.exe" file from the CD-ROM.
3. Press "Install" to the driver.
- 4.



5. When the "Hardware Installation" wizard prompts windows 2000/XP compatibility, Just click on "Continue Anyway"
6. At the Found New Hardware Wizard windows®, click on "Next"



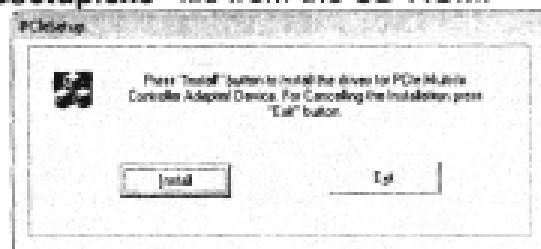
7. Select the option "Install the software automatically(Recommended)" and click on "Next"
8. When the "Hardware Installation" wizard prompts windows 2000/XP compatibility, Just click on "Continue Anyway"
9. Click "Finish" respectively.



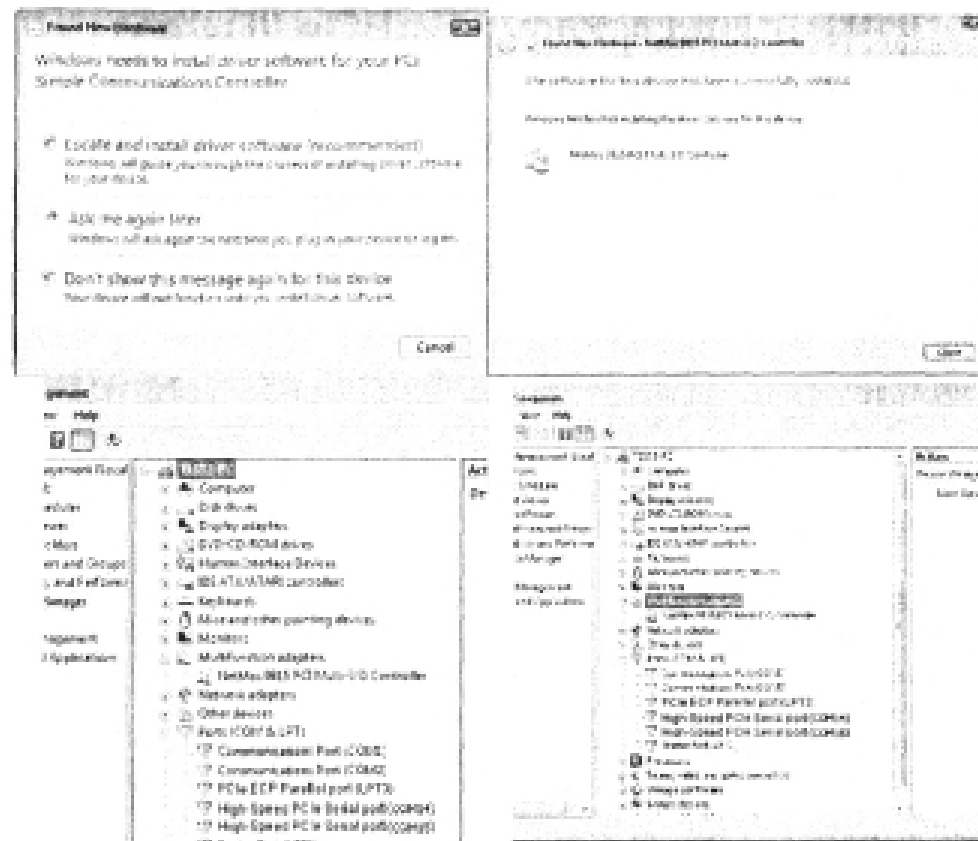
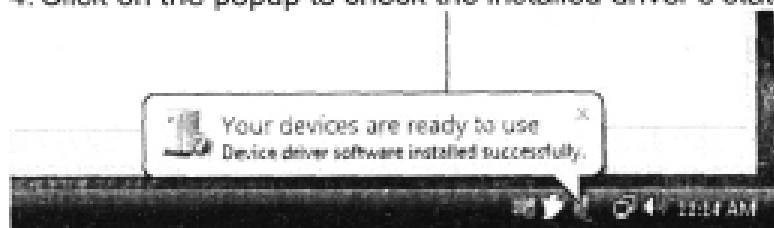
9. Click the "Device Manager" click on "Device Manager" to either "Port (COM & LPT)" device options. "High-Speed PCIe Serial port" or "PCIe ECP Parallel port" should be displayed when successfully installed. The port is ready to connect new device.

### Windows Vista Driver Installation

1. Go to Start and Run.2000(XP).
2. Run "PCsetupe.exe" file from the CD-ROM.



3. Press "Install" to the driver. Click on "exit"
4. Click on the popup to check the installed driver's status.



5. Click the "Device Manager" click on "Device Manager" to either "Port (COM & LPT)" device options. "High-Speed PCIe Serial port" or "PCIe ECP Parallel port" should be displayed when successfully installed. The port is ready to connect new device.