

# 952ER2 PCI Express Card (952ER2 & 952ER1)

## System Requirements

### Hardware:

#### Description

- Fully compliant with PCI Express Base Specification Revision 1.1
- Compatible for PCI Express Card application requirements.
- PCIe Multi Function Peripheral Controller with x1Lane Interface.
- Support four PCIe functions.
- Supports PCIe Power Management.

#### Serial:

- Two 16C950 compatible UART.
- Bi-directional speeds from 50 bps to 15Mbps/port.
- Full Serial modem control.
- Serial port transceiver shutdown support.
- 5V / 12V / RI (no power) power selectable on each individual port (DB9 PIN9)
- Microsoft® Windows® 2000/XP/2003 Sever/VISTA.

#### Package Contents

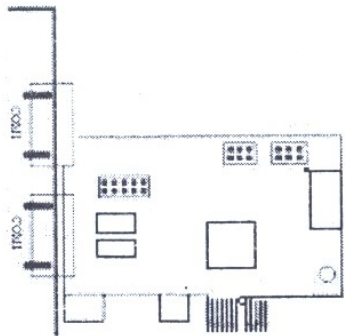
This PCI Express I/O Card package includes the following:

- Hardware installation guide
- Software installation guide
- PCI-E Card
- Driver CD

Please make sure that all of these items are present. If anything is missing, contact your vendor for assistance.

## 1. Configuration

### The Super PCI Express I/O Card



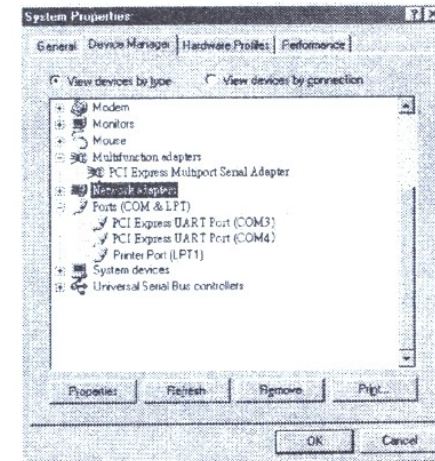
The card is specially designed to allow power output from the ninth pin of the connector to enable power up of the connected devices without power adapter. The card allow user to set each individual port with 5V, 12V, or RI (no power). User can also choose to draw the needed power from the external system power supply

### Installing the Software Drivers

This section provides information on how to install the Super PCI-E I/O drivers for the following operating systems:

#### Windows 2000 Driver installation

1. At the Add New Hardware Wizard windows®, click on "Next"
2. Select the option "Search for the best driver for your devices (Recommend)" and click on "Next"
3. Select the option "Specify the location " and type in d:\Uart (CD-ROM) then click on "Next"
4. Click "Next" and then "Finish" respectively.
5. Remove the diskette, then select "Yes" to restart the computer for the setup to take effect.

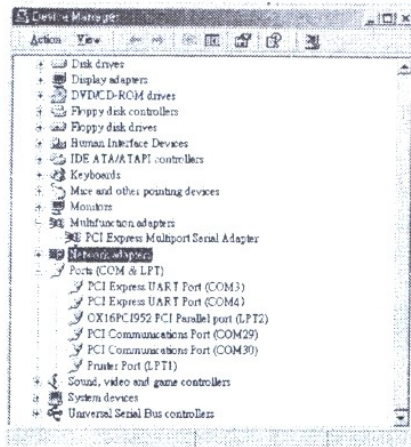


#### To verify successful installation in Windows® 2000:

1. From the main desktop, click on My Computer, then double-click on Control Panel, System, and Device Manager.
2. Double-click on either Ports (COM & LPT) or Serial port device options. PCI I/O Board should be displayed when successfully installed. The port is ready to connect new device.

## Windows XP Driver installation :

1. At the Add New Hardware Wizard windows®, click on “Next”
2. Select the option “Search for the best driver for your devices (Recommend)” and click on “Next”
3. Select the option “Specify the location “ and type in **d:\Uart ( Disk D:CD-ROM)** then click on “Next”
4. Click “Next” and then “Finish” respectively.
5. Remove the diskette, then select “Yes” to restart the computer for the setup to take effect.

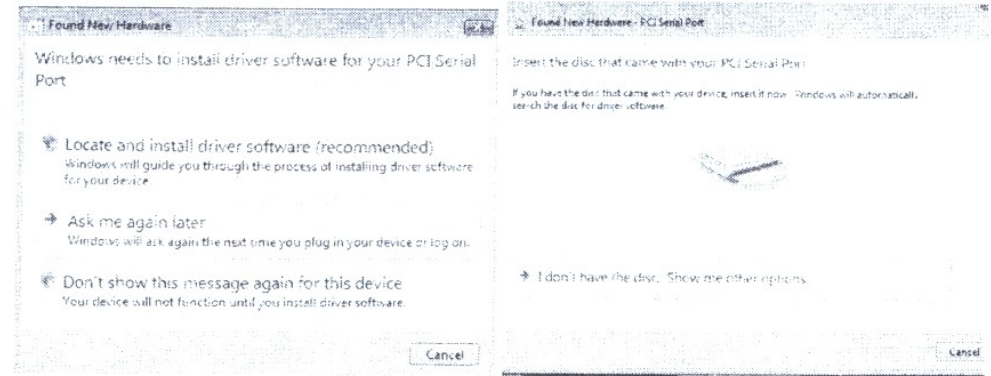


## To verify successful installation in Windows® XP:

1. From the main desktop, click on **My Computer**, then double-click on **Control Panel, System, and Device Manager**.
3. Double-click on either **Ports (COM & LPT)** or **Serial port** device options. **PCI I/O Board** should be displayed when successfully installed. The port is ready to connect new device.

## Windows VISTA Driver installation:

1. Start power to RUN VISTA
2. CD drive to CD-ROM
3. Click on “Locate and install driver software (recommended)”.



4. Install the disc that came with your PCI Serial Port and then “Next”
5. Windows encountered a problem installing the driver software for your device and then “close” ( **Disk D: \UART(CD-ROM)**)
6. Install the disc that came with your 16C95x Serial Port and then “Next”
7. Windows encountered a problem installing the driver software for your device and then “close”
8. Chck the “**Device Manager**” click on “**Device Manager**” to either **Ports (COM & LPT)** device options. **16C95x Serial Port** should be displayed when successfully installed. The port is ready to connect new device.

