

99100EL(H)R4(-PW)

PCIe 4 Ports RS232 Low profile Card

Installation

WARNING! PCI Express cards, like all computer equipment, can be severely damaged by static electricity. Be sure that you are properly grounded before opening your computer case or touching your PCI Express card. We recommend that you wear an anti-static strap when installing any computer component. If an anti-static strap is unavailable, discharge yourself of any static electricity build-up by touching a large grounded metal surface (such as the computer case) for several seconds. Also be careful to handle the PCI Express card by its edges and not the gold connectors.

Hardware Installation

1. Turn your computer off and any peripherals connected to the computer (i.e. printers, external hard drives, etc.). Unplug the power cable from the rear of the power supply on the back of the computer.
2. Remove the cover from the computer case. See documentation for your computer system for details.
3. Locate an open PCI Express slot and remove the metal cover plate on the rear of the computer case. Note that this card will work in PCI Express slots of additional lanes
4. Insert the card into the open PCI Express slot and fasten the

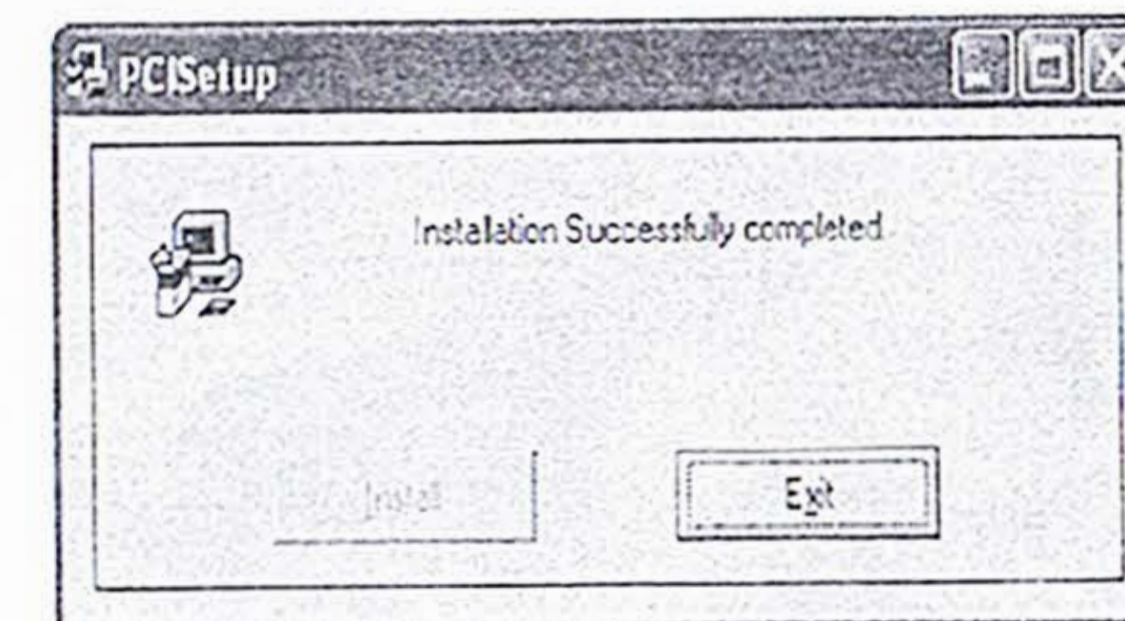
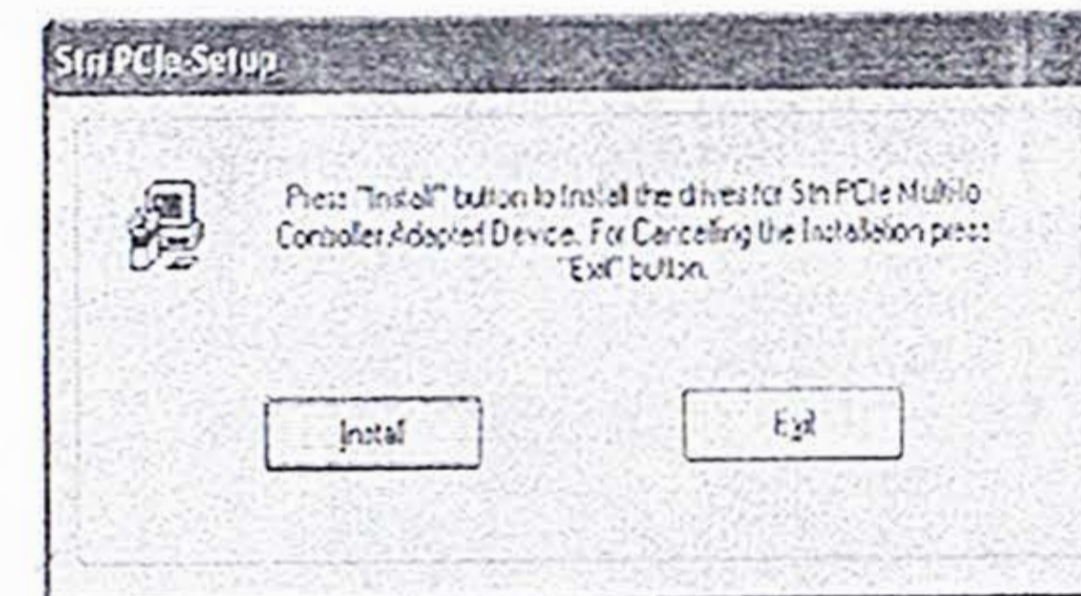
bracket to the rear of the case, per your computer's documentation.

5. Place the cover back onto the computer.

Driver Installation

Windows XP/Server 2003 /Vista/ 7 / 8.x / 10

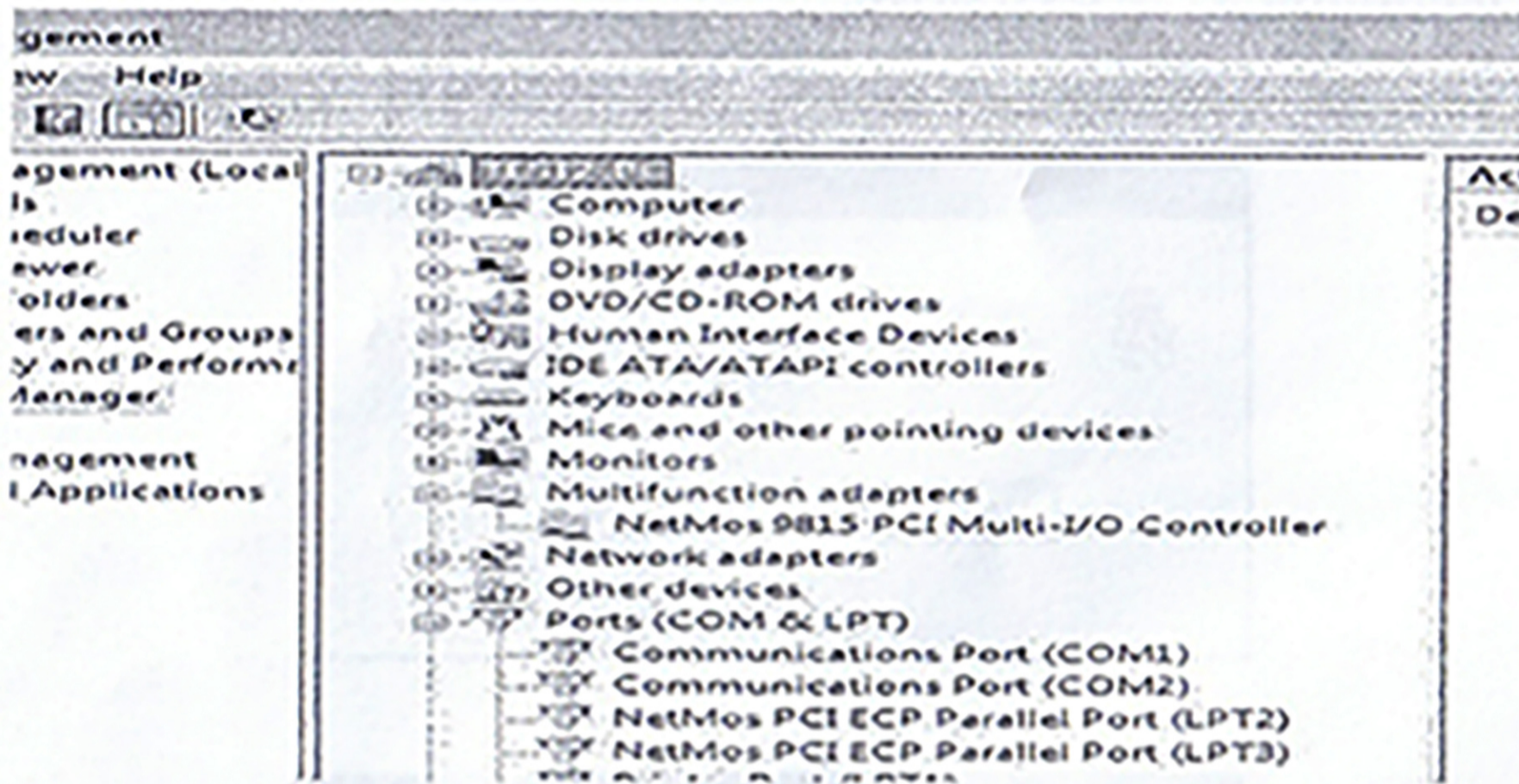
1. Once the computer has started and the operating system is fully loaded, insert the provided Driver CD into the computer's CD/DVD drive.
2. Run the "AX99100_Setup.exe" file located in "Driver".



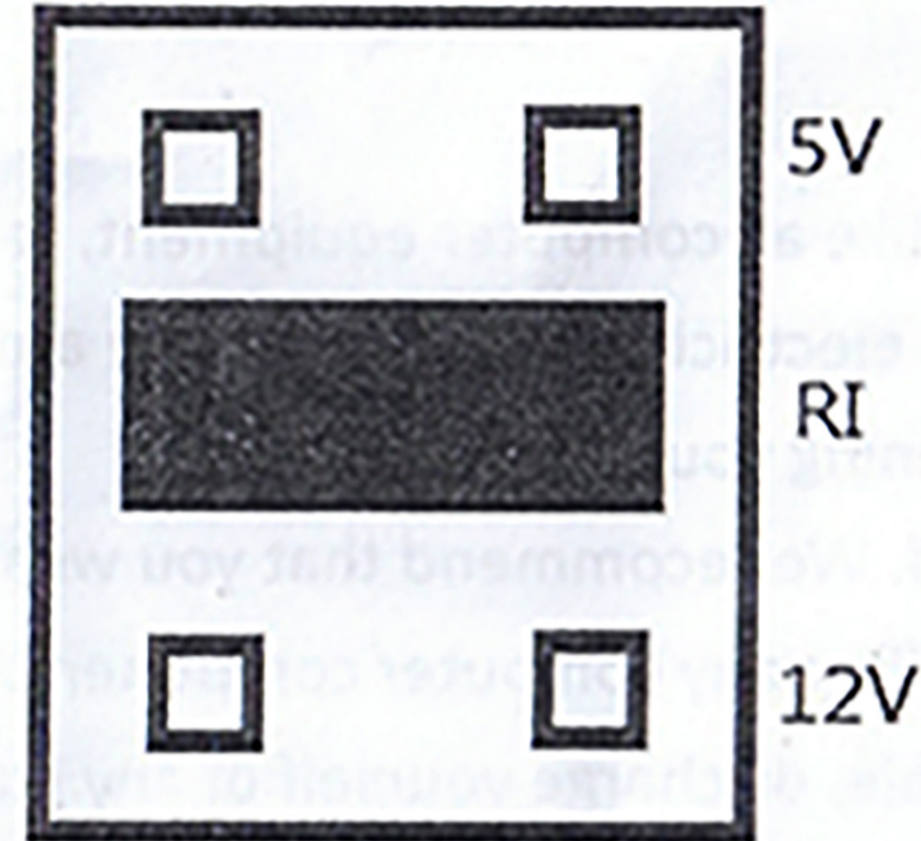
Verifying Installation

Windows XP/Server 2003/Vista/ 7 / 8.x / 10

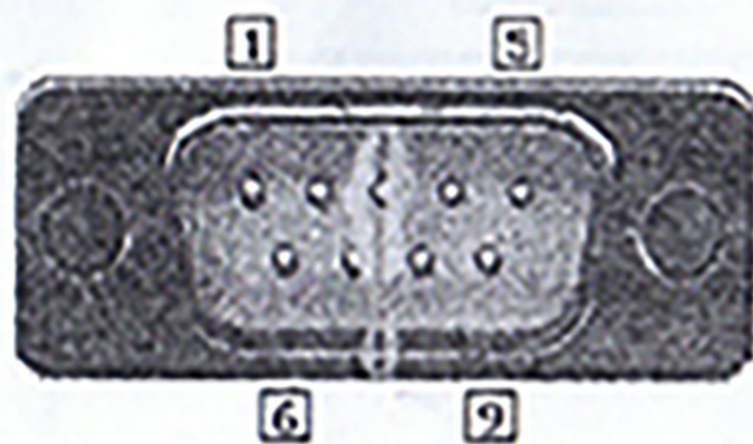
From the main desktop, right-click on "My Computer" ("Computer" in W7), then select Manage. In the new Computer Management window, select Device Manager from the left window panel.



With Power : (Default :RI)



Com Port Pinout



Pin 1	DCD
Pin 2	RXD
Pin 3	TXD
Pin 4	DTR
Pin 5	GND
Pin 6	DSR
Pin 7	RTS
Pin 8	CTS
Pin 9	PWR