

4 Ports Serial PCI Card

System Requirements

Hardware:

Description

- Standard PCI Local Bus Specification Rev. 2.3 compliant
- Built-In PCI Target Controller
- Supports 33MHz and 66MHz Bus Operation Speed

Serial:

- Built-In two improved 16C1050 UART with 256-byte Deep FIFO
- Serial Data Rate of Up to 5.3Mbps
- Software/Hardware Flow Control & Xoff Re-Transmit Function
- Microsoft® Windows® 98/2000/XP/2003 Server/VISTA/7, Linux 2.4 & 2.6
- 5V / 12V / RI (no power) power selectable on each individual port (DB9 PIN9)

Package Contents

This PCI I/O Card package includes the following:

-Software installation guide

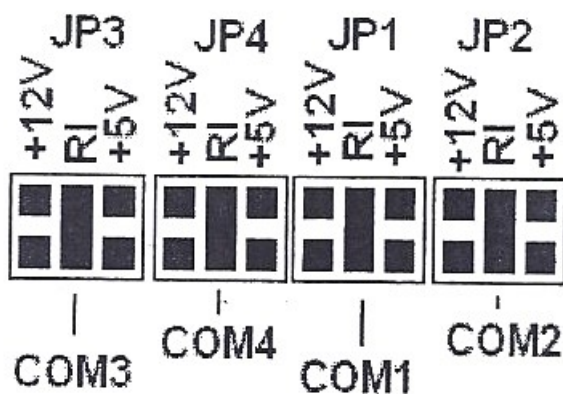
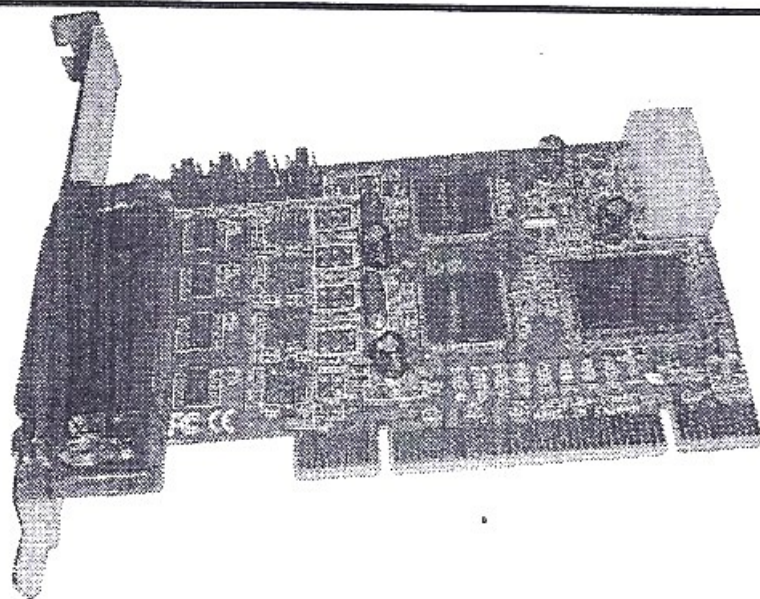
- PCI Card -Cable 44 pin to DB9M

-Driver CD

Please make sure that all of these items are present. If anything is missing, contact your vendor for assistance.

1. Configuration

The Super PCI I/O Card



Installing the Software Drivers

This section provides information on how to install the Super mini PCI I/O drivers for the following operating systems:

Windows 2000 Driver installation

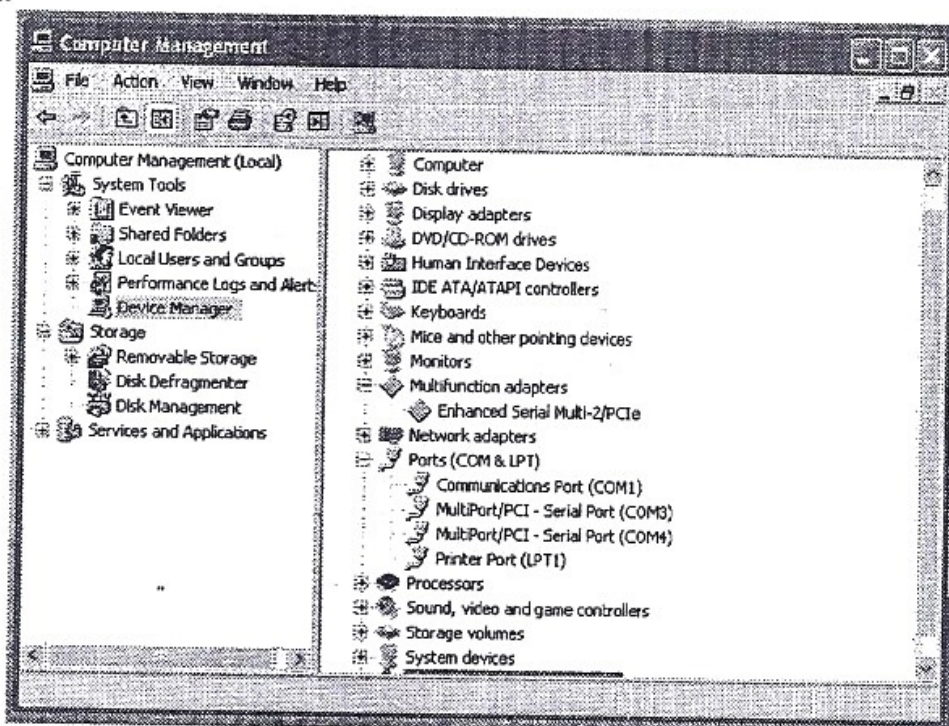
1. At the Add New Hardware Wizard windows®, click on **"Next"**
2. Select the option **"Search for the best driver for your devices (Recommend)"** and click on **"Next"**
3. Select the option **"Specify the location "** and type in **d:\WINXP,2003,VISTA,2003,200 (CD-ROM)** then click on **"Next"**
4. Click **"Next"** and then **"Finish"** respectively.
5. Remove the diskette, then select **"Yes"** to restart the computer for the setup to take effect.

To verify successful installation in Windows® 2000:

1. From the main desktop, click on **My Computer**, then double-click on **Control Panel, System, and Device Manager**.
2. Double-click on either **Ports (COM & LPT)** or **Serial port** device options. **MultiPort/PCI Serial Port** should be displayed when successfully installed. The port is ready to connect new device.

Windows XP Driver installation :

1. At the Add New Hardware Wizard windows®, click on **"Next"**
2. Select the option **"Search for the best driver for your devices (Recommend)"** and click on **"Next"**
3. Select the option **"Specify the location "** and type in **d:\WINXP,2003,VISTA,2003,200 (CD-ROM)** then click on **"Next"**
4. Click **"Next"** and then **"Finish"** respectively.
5. Remove the diskette, then select **"Yes"** to restart the computer for the setup to take effect.

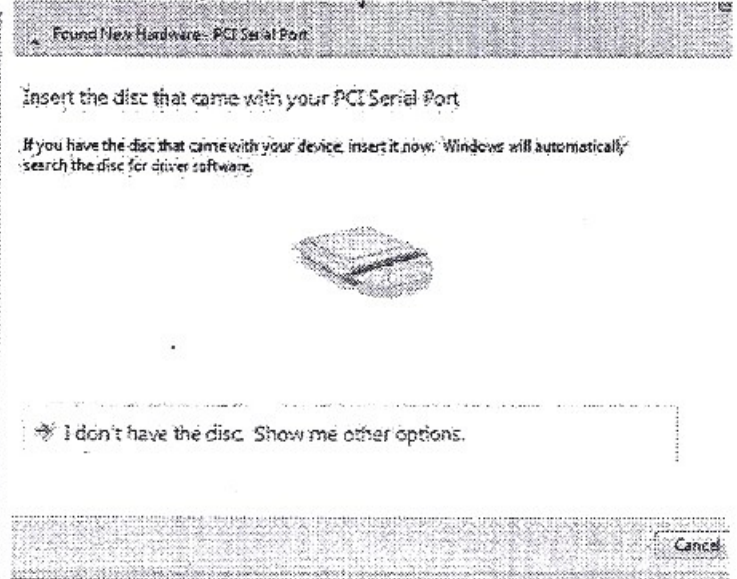
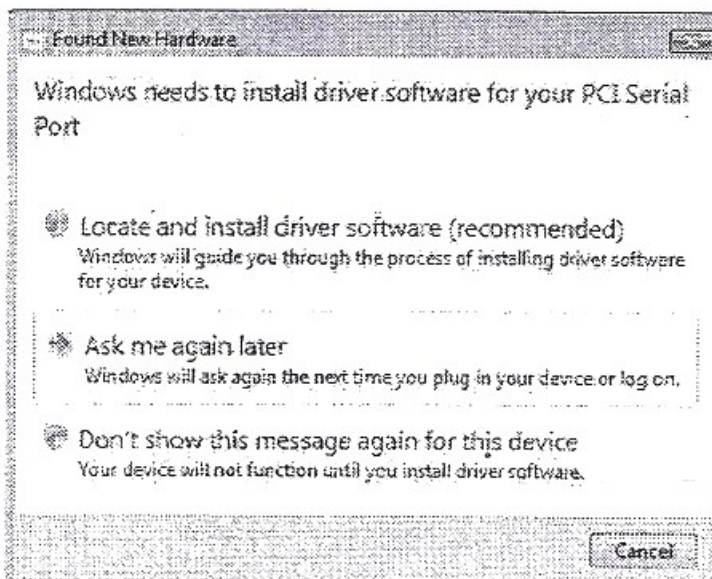


To verify successful installation in Windows® XP:

1. From the main desktop, click on **My Computer**, then double-click on **Control Panel, System, and Device Manager**.
3. Double-click on either **Ports (COM & LPT)** or **Serial port** device options. **MultiPort/PCI Serial Port** should be displayed when successfully installed. The port is ready to connect new device.

Windows VISTA Driver installation:

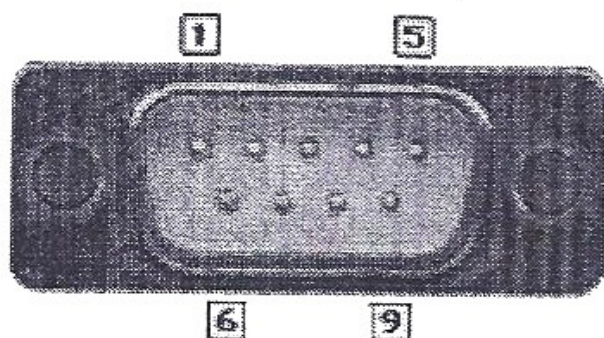
1. Start power to RUN VISTA
2. CD drive to CD-ROM
3. Click on "**Locate and install driver software (recommended)**".



4. Install the disc that came with your PCI Serial Port and then "**Next**"
5. Windows encountered a problem installing the driver software for your device and then "**close**" (**Disk D:\WINXP,2003,VISTA,2003,200 (CD-ROM)**)
6. Install the disc that came with your 16C95x Serial Port and then "**Next**"
7. Windows encountered a problem installing the driver software for your device and then "**close**"
8. Click the "**Device Manager**" click on "**Device Manager**" to either **Ports (COM & LPT)** device options. **MultiPort/PCI Serial Port** should be displayed when successfully installed. The port is ready to connect new device.

BUY ON
www.cablematic.com

DB9 CONNECTOR PIN



PORT DATA(DB9)

1	DCD
2	RX
3	TX
4	DTR
5	GND

6	DSR
7	RTS
8	CTS
9	RI or +5V or +12V