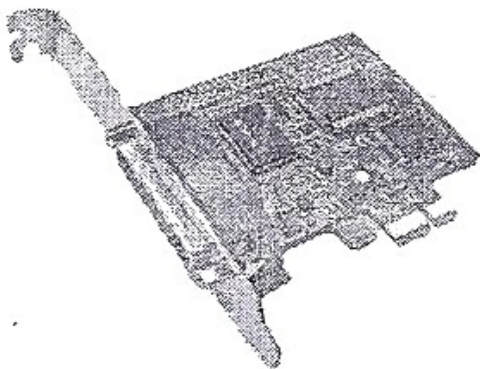
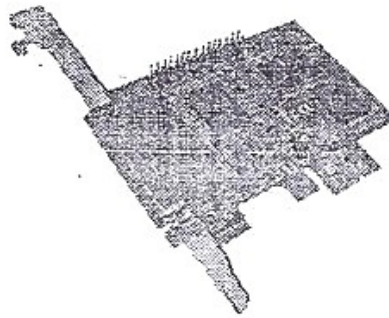


PCI-E I/O Card

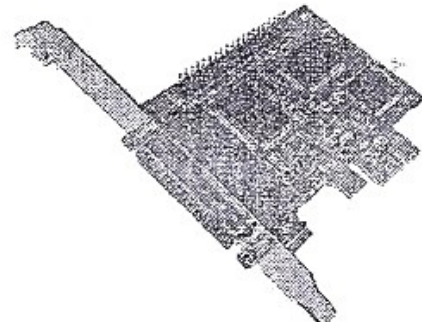
The 98XX is a 32-bit, 33MHz PCIe bus plug & play with high speed printer port



9815EL-2



9815EL-3



9815EL-4

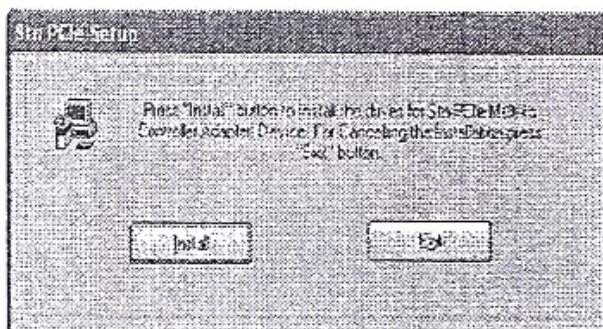
Software driver installation:

Nm98XX supports the Windows XP 32/64Bit /Vista /Windows 7 operating systems,

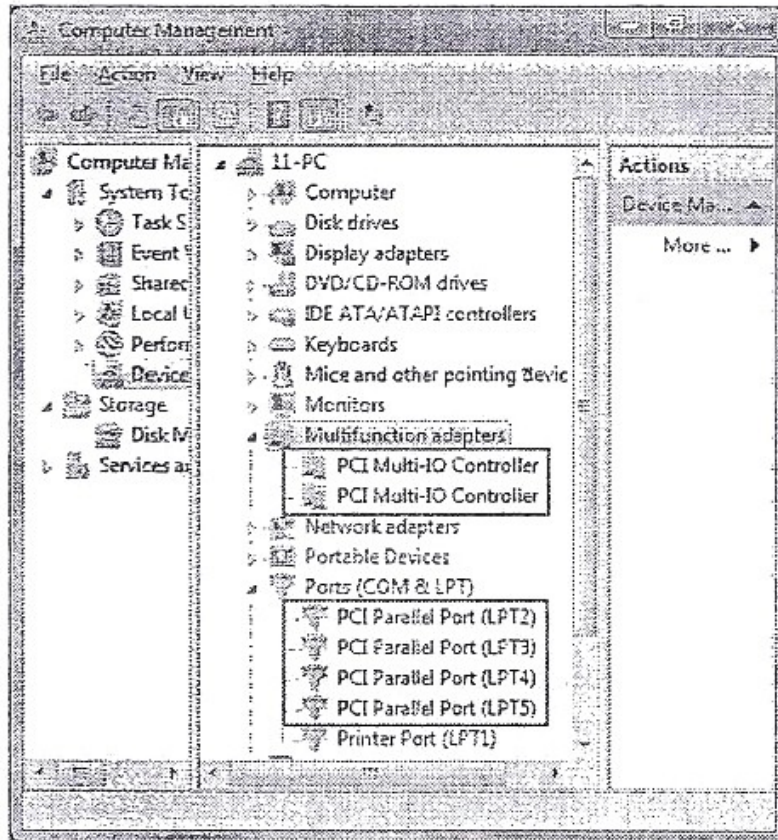
Windows® 7 Driver installation:

Follow the steps listed below to install the Windows® XP drivers:

1. Installing drivers for the first time: Run "MOSCHIP_Setup" file from the driver disk folder. PCIe Setup window will be popped up as shown below



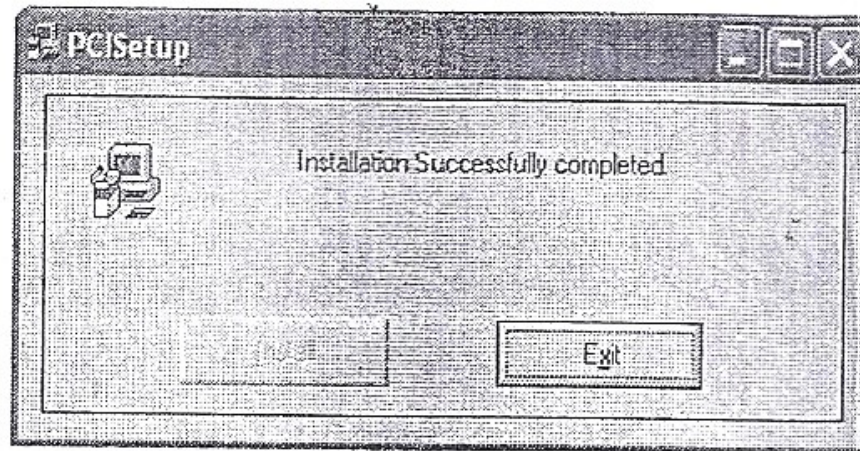
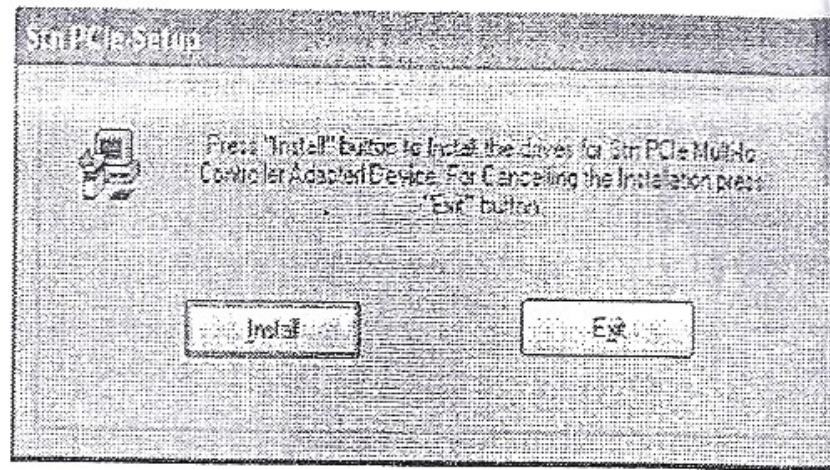
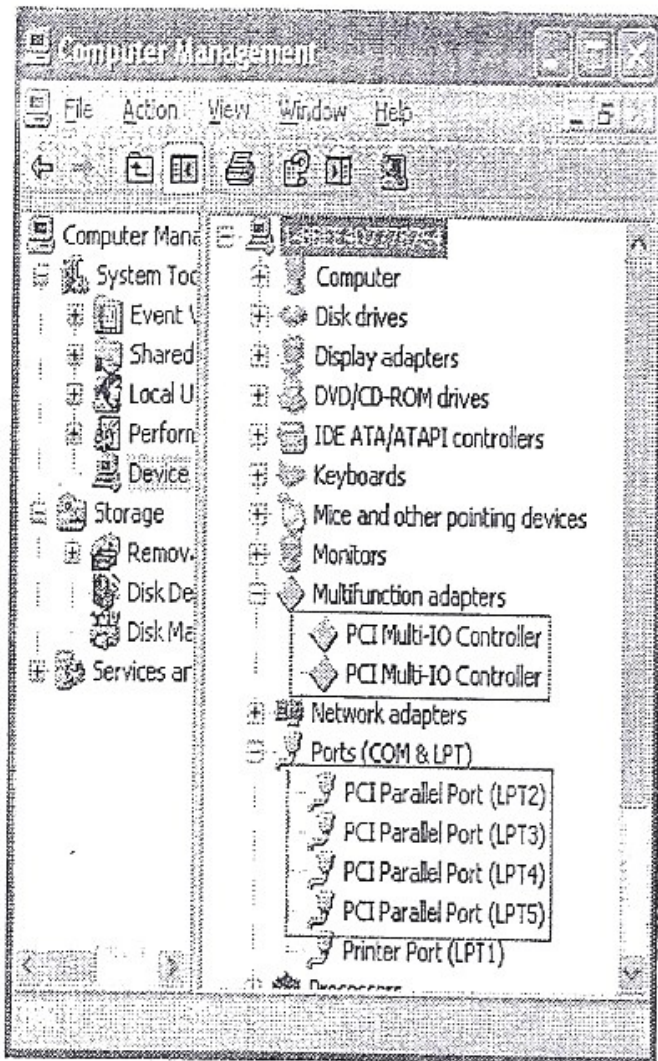
2. Click on "Install" button to install the MCS98XX drivers automatically.
3. On successful driver installation, the utility will display "Installation Completed" message, click on "Exit" button to complete the driver installation.



9815EL-4,(3),(2) in Windows® 7

To verify successful installation in Windows® 7 :

1. From the main desktop, click on My Computer, then double-click on Control Panel, System, and Device Manager.
2. Double-click on either Ports (COM & LPT) or PCIe Parallel Port (LPT) device options. Multifunction adapters PCIe I/O Board should be displayed when successfully installed. The port is ready to connect new device.
3. LPT (2) PT (3) PT (4) has already been installed successfully in the Port (COM LPT)



9815EL-4,(3),(2) in Windows ® XP

Windows® /XP Driver installation

1. Installing drivers for the first time:

Run "MOSCHIP_Setup" file from the driver disk folder. PCIe Setup window will be popped up as shown below

2. Click on "Install" button to install the

3. on "Exit" button to complete the driver installatio

To verify successful installation in Windows® XP :

1. From the main desktop, click on My Computer, then double-click on Control Panel, System, and Device Manager.

Double-click on either Ports (COM & LPT) or PCIe Parallel Port (LPT) device options. Multifunction adapters PCIe I/O Board should be displayed when successfully installed. The port is ready to connect new device.

2. LPT (2) PT (3) PT (4) has already been installed successfully in the Port (COM LPT)

BUY ON
www.cablematic.com