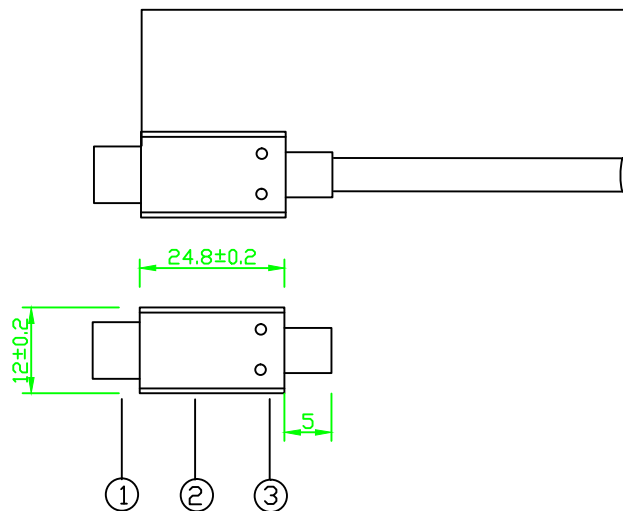
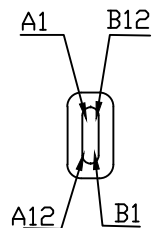
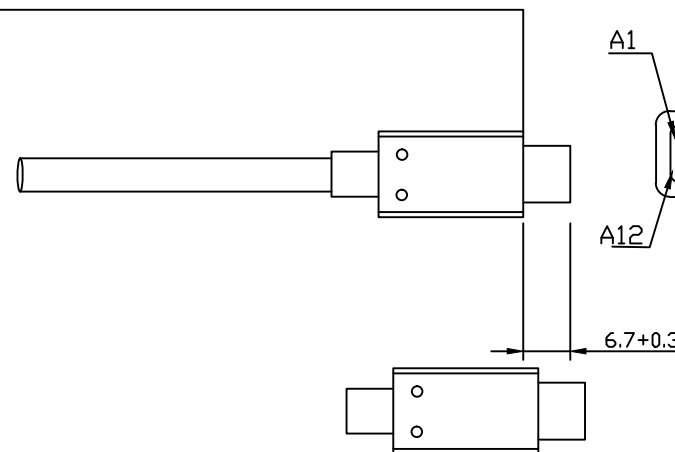
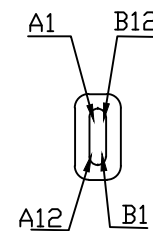


P1



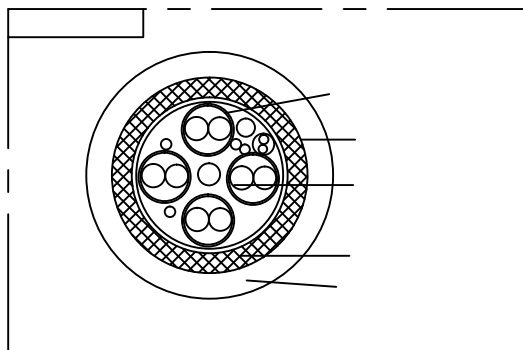
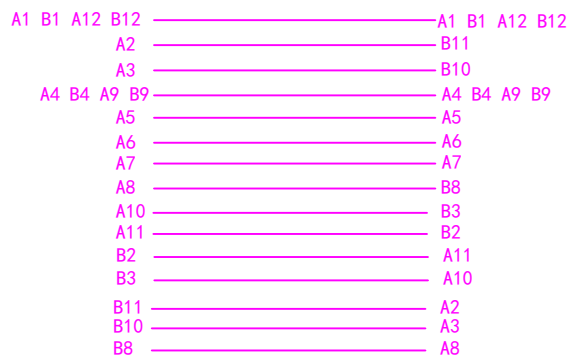
P2



PIN ASSIGNMENT:

P1
TYPE-C

P2
TYPE-C



4	(32AWG*1P+AL+MY)*4P+32AWG. 7/0.08TC*1P+32AWG*4C+41/0.10TC*2C+B16/10/0.06MM OD4.6 PVC BLACK PVC		
3	Black PVC (40P)	20g	
2	LDPE	12g	
1	TYPE-C connector Nickel	1pcs	

1. 100% open/short testing
2. Voltage 100V AC/0.1SEC
3. Insulation resistance: 20MΩ (MIN) 100V DC



Drawing	Q Y Z	Product	TYPE-C AM- TYPE-C AM Cable			
Date	2020.10.06	No.	TYPE-C-TYPE-C			
APPRBY:		REV.	1:1	Unit	MM	check: