

KVM Switching Client Software for Windows/Mac
User-definable Hotkeys
Independent/Simultaneous Audio&PC Switching
Autoscan Delay Time Programmable

2-port Compact Desktop DVI USB KVM Switch w/ Audio&Mic Quick Installation Guide

Thank you for purchasing the **2-port Compact Desktop DVI USB KVM Switch!** With our highly reliable and quality product, user can enjoy countless benefits from using it.



2-port Compact Desktop DVI USB KVM Switch w/ Audio&Mic

Introduction

The **2-port Compact Desktop DVI USB KVM Switch** is with audio and microphone switching function. It allows you to access, control, boot and reboot 2 DVI-enabled USB multimedia computers. The independent audio/mic switching function allows an uninterrupted audio experience on a same connected computer even when you switch to another computer.

This KVM Switch adopts the DVI technology for digital video signal transmission over the cable to reduce undesired distortion from conventional analog/digital conversion. Both digital video (1600 x 1200) and analog video (2048 x 1536) are supported.

For Windows and Mac platforms, it provides an innovative and easy-to-use *KVM Switcher Software* -- a small windows client application to facilitate your KVM switching operations such as PC selection and hotkey sequence programming, autoscanning, autoscan delay time programming, independent/simultaneous audio&PC switching, etc.

Out-of-the-box Installation

Take the Companion CDROM and the KVM Switch out of the box and follow the steps below for installation....

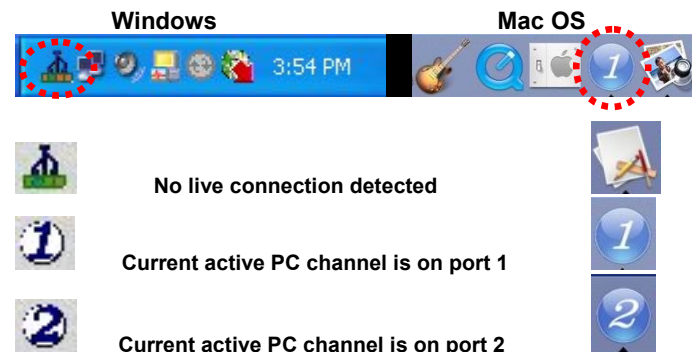
Step 1. Insert the companion CD ROM into your CD drive, and the Autorun screen will pop up (If the Autorun feature

has not been enabled on your computer. Just find the Autorun.exe on the CDROM and double-click it to start).



Step 2. For Windows/Mac: Just click the "Software Installation for Window/Mac" to start installation. (If the Mac version software does not start, you should then copy it to your local Hard disk on Mac). Follow the instructions to completion. If the installation is complete, you will see a KVM Switcher icon on the system tray of your desktop. Right-click to evoke the operation menu and double-click to evoke the configuration box. For operation details of the KVM Switcher software, please refer to the *Operation Quick Reference*.

The Windows switcher software is recommended for use on Windows 98 SE or later. The Mac switcher software is recommended for use on Mac OS 10.4 [Tiger].



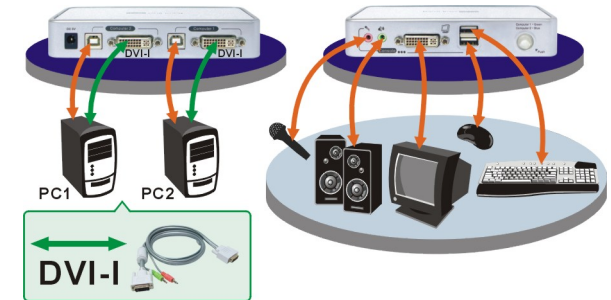
The KVM Switcher Software supports both the Windows and the Mac OS operating systems. For other OS platforms such as Linux, you can still use the keyboard hotkey - *ScrLk + ScrLK* - to switch PC. However, this switching hotkey is not available on non-PC platform such as MacOS.

Step 3. Connect the shared USB keyboard, mouse, monitor, speaker/headphone and microphone each to its port on your KVM Switch.

Step 4. Connect each KVM PC port to a computer, using the slim 3-in-1 KVM combo cable and the audio/mic cable. After you have connected the KVM and computers properly, you can operate the KVM Switch immediately.

Some older computers with USB interface might need to manually enable the USB option in the BIOS settings before you can use any USB devices. If your USB interface does not work, please check the USB option in the BIOS.

If you use Windows 95/98/SE or Mac OS and has not yet installed a USB mouse on your computer, there might be an error message telling you that mouse is not detected and prompting you to decide whether to ignore the same message in the future, and yet you will find there is no mouse movement to disable this message....So it is suggested that you should installed your USB mouse on your computer first, before connecting it to this KVM Switch.



USB-SP04A Configuration Diagram

Sharing High-speed USB Device

The 2 USB ports on the front-panel are normally used for keyboard and mouse connections. However, they are USB 2.0 hub ports and can also be connected to any USB devices so that you can easily switch and share the USB devices among two computers.




Easy Operation

There are three methods to control your KVM Switch for PC and Audio/Mic channel selection: using (1) the face-panel push buttons, (2) the hotkey sequences, or (3) the KVM Switcher Software.

Face-panel buttons

The face-panel button allows you a direct control over KVM switching operation. Simply press the button to switch to the corresponding PC port (and audio/mic channel, if binding is enabled). By default, PC port switching and audio/mic port switching are bound together, unless you specify the audio to be fixed a specific port.


 You can use the face-panel button to switch to an empty port that is not connected with any computer. Normally, if you use keyboard hotkeys or the KVM Switcher software, you will not be able to switch to an empty port.

Keyboard hotkeys

User-definable hotkeys for PC selection:

Hotkey sequence = Ctrl - Alt - [command key]*


* Please refer to next section for keys that are qualified to be used as a command key


 Note that these 3 keys should be pressed and held together. And it is upon the release of all three keys, the switching action will be executed.


Universal hotkey for switching to next port:


Universal Hotkey sequence = ScrLk + ScrLk

* For other operating systems on PC such as Linux, you can still use this special hotkey to facilitate PC switching. This special hotkey is not available for Mac.

 Both the universal hotkey, ScrLk + ScrLk and the user-definable hotkey, Ctrl - Alt - [command key] **WILL NOT** allow you to switch to an empty port that is not connected with any computer. To force your KVM to switch to an empty port, just press the face-panel button to switch.

 Each keystroke within a hotkey sequence should be pressed within 2 seconds. Otherwise, the hotkey sequence will not be validated.

 After port switching, you have to wait till the KVM Switcher icon shows forth the target port before you can perform next switching again.

 All the hotkeys are only functional after your PCs are booting into the OS. If you want to switch PC in the BIOS/preboot stage, press the face-panel button to switch.

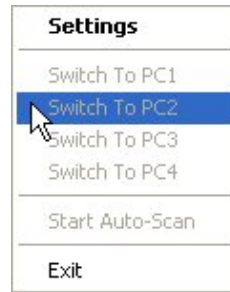
KVM Switcher Software (only for Windows platform)

In addition to PC switching, the KVM Switcher Software also allows you more advanced functions such as described in the next section....

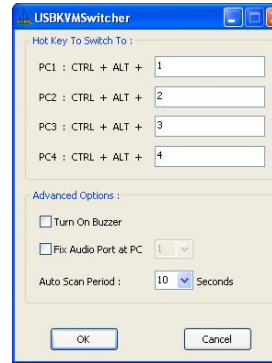
KVM Switcher Operation Reference

Switch to PC x by Operation Menu

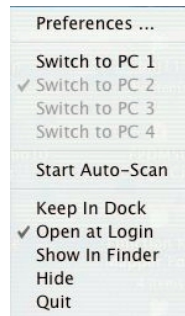
Right-click the KVM Switcher icon to evoke the operation menu, then select whichever PC that is available for switching. Once you select a PC channel, it will immediately switch to that PC. Note that the unconnected port(s) or the active port will be grayed-out and hence non-selectable.



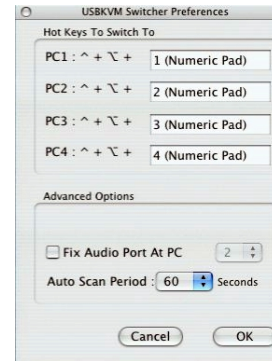
Windows : Operation Menu



Configuration Dialog Box



Mac OS: Operation Menu




Configuration Dialog Box

Switch to PC x by Keyboard Hotkeys

Hit the hotkey according to your current hotkey definition:

Hotkey sequence = Ctrl - Alt - [command key]*

* The factory default hotkey setting is Ctrl + Alt + 1/2/3/4 for PC 1/2/3/4. You can also use ScrLk + ScrLk to switch PC.

 Note that these 3 keys should be pressed and held together. And it is upon the release of all three keys, the switching action will be executed.

Start Auto-scan

Right-click the KVM Switcher icon to evoke the operation menu, then select *Start Auto-Scan* to activate autoscanning.

Stop Auto-scan

(While autoscanning) Right-click the KVM Switcher icon to evoke the operation menu, then select *Stop Auto-Scan* to de-activate autoscanning. Or you can press any button on the face-panel to stop Auto-scan.

KVM Switcher configuration

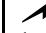
Right-click the KVM Switcher icon and select *Settings* or double-click the icon to bring up the configuration dialog box.


Define Hotkey commands

You can specify the command key as you like by typing it in. For example, you can specify the hotkey for switching to PC 1 as CTRL - ALT - A by typing an A (not case-sensitive) in the editable field.

Hotkey Sequence = CTRL - ALT - [command key]*

* The command key is user-definable via the configuration dialog box

 Please note that if you intend to modify the command key, you have to modify them on each and every of the connected computers, since the hotkey setting is stored within each connected computer.

 Except those control keys such as Alt, Ctrl, Shift, CAPS, Tab, Esc and those functions keys and edit keys, all other keys on the keyboard, including those number keys on the number pad, are all other keys qualified to be used as hotkey command keys. In addition to the software KVM Switching by the operation menu and the user-defined hotkeys, you can always use the universal hotkey for PC switching – ScrLk + ScrLk

Turn On Buzzer (optional feature, not available on this model)

This is feature is not available on this model. [Check this option to turn on the buzzer sound]

Fix Audio Port at PC x

Check this option and then select the PC to fix the audio/mic channel to the selected PC. Once this option is checked, the audio/mic channel will be fixed and become non-switchable.

Auto Scan Period

Select the Autoscan period from 10 ~ 60 seconds with an increment of 5 seconds. The Autoscan period is the time your KVM Switch will wait before switching to next PC.