

# Quick Installation Guide

BUY ON  
[www.cablematic.com](http://www.cablematic.com)



## 2-Port DisplayPort USB Cable KVM Switch w/ Audio & Mic UDP-TA2

### INTRODUCTION

The UDP-TA2 is a 2-port DisplayPort USB KVM switch with 2 sets of USB KVM & Audio/Mic combo cables and a wired QuickSwitch button for easy connection to your two computers. It allows you to access, control, boot and reboot two USB-enabled multimedia computers with only one USB keyboard, mouse, display, speaker set, and microphone. For easy and fast switching between two computers, you can use the QuickSwitch button or the Switching Software installed on your PCs!

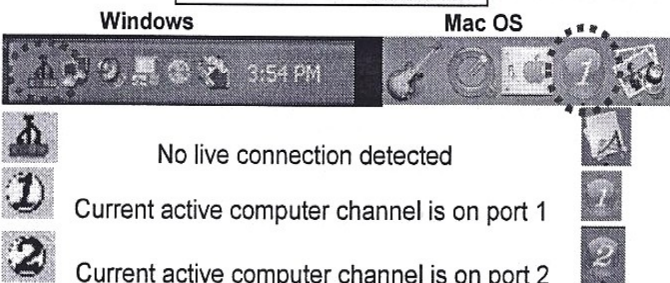
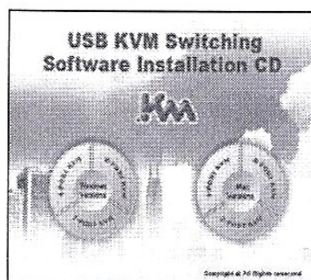
For computers running Windows/ Mac operating systems, it also provides an innovative and easy-to-use KVM Switching Software – small Windows/Mac client application to facilitate your KVM switching operations such as computer selection and hotkey sequence programming, autoscanning, autoscanning delay time programming, independent/simultaneous audio & computer switching, etc.

The UDP-TA2 DisplayPort USB cable KVM switch offers USB 2.0 interface technology for plug-and-play and hot-plug abilities. In addition to connect to mouse or keyboard, those two USB 2.0 ports can also be connected to other high-speed USB devices. Users can enjoy maximum flexibility and convenience with its compact and one-piece design.

### INSTALLATION

Take the support CD and the cable KVM switch out of the box and follow the steps below for installation.

1. Insert the support CD into your CD drive, and the installation interface will pop up (If the Autorun feature has not been enabled on your computer. Just find the Autorun.exe in the support CD and double-click it to start).
2. For Windows/Mac: Just click the "Software Installation for Window" to start Windows Switching Software installation. To install Mac version, please copy the file (\*.pkg format) to the local hard disk and install it from there. Follow the instructions to completion. If the installation is completed, you will see a KVM Switching Software icon on the system tray of your desktop. Right-click on this icon to evoke the operation menu and double-click to evoke configuration box. For operation details of the KVM Switching Software, please refer to the following sections.



**Note:** The Mac version of the KVM Switching Software supports only Mac OS 10.4 (Tiger) and later. Earlier versions of the Mac OS might or might not work well with it.

**Note:** The KVM Switching Software supports both the Windows and the Mac OS operating systems. For other OS platforms such as Linux, you can still use the universal keyboard hotkey – Scroll Lock + Scroll Lock- to switch computer. However, this switching hotkey is not available on non-computer platform such as Mac OS.

3. Repeat step 1 and 2 to install Switching software on the second computer.
4. Connect a set of monitor, USB keyboard, and USB mouse to respective consoles port on KVM front panel.

5. Connect a set of the fixed KVM/ audio&mic cables to a computer's connectors. Connect another set of cables to another computer.

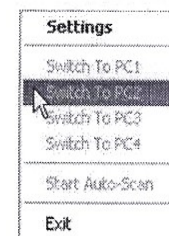
Installation is completed. Now you can operate the KVM switch immediately.

**Note:** Some older computers with USB interface might need to manually enable the USB option in the BIOS settings before you can use any USB devices. If your USB interface does not work, please check the USB option status in the BIOS.

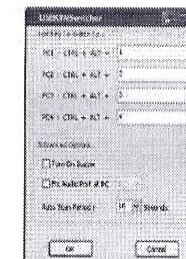
### OPERATION

There are three methods to control your KVM switch for computer and audio/mic port selection: using (1) QuickSwitch Button (a wired remote control), (2) KVM Switching Software, or (3) Keyboard hotkeys.

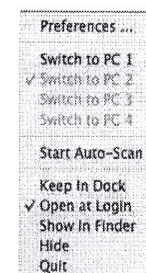
- (1) QuickSwitch Button (a wired remote control)  
The QuickSwitch button is a wired remote control that allows you a direct switching control. Simply press the button to toggle between two computers.
- (2) KVM Switching Software (Windows & Mac platform)  
For KVM Switching Software operation, please refer to the "Quick Reference Sheet".



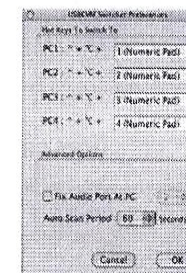
Windows: Operation Menu



Configuration Dialog Box



Mac: Operation Menu



Configuration Dialog Box

- (3) Keyboard Hotkeys  
For keyboard hotkey operation, please refer to "Quick Reference Sheet".



## Quick Reference Sheet

Command	QuickSwitch Button	Switching Software	Keyboard Hotkeys <sup>1</sup>	Description
Select PC Port	Press the button to toggle between the two computers.	Right-click the KVM Switching Software icon to evoke the operation menu, then select whichever computer that is available for switching.	Scroll Lock + Scroll Lock	Select PC port
Next lower PC Port	---	Right-click the KVM Switching icon to evoke the operation menu, then select whichever computer that is available for switching.	---	Next lower PC port
Next higher PC Port	---	Right-click the KVM Switching icon to evoke the operation menu, then select whichever computer that is available for switching.	---	Next higher PC port
Define Hotkey Preceding Sequence	---	Right-click the KVM Switching icon to evoke the operation menu, and then select Settings (Windows) / Configuration Dialog Box (Mac OS).	---	User-definable hotkeys sequence for computer selection is "Ctrl +Alt+ [command key]". For Mac, instead of Scroll Lock key, you may use User-definable hotkey sequence to switch.
Autoscan	---	Right-click the KVM Switching Software icon to evoke the operation menu, then select Start Auto-Scan to activate autoscanning.	---	Starts Autoscan
Autoscan with Programmable Delay Time	---	Right-click the KVM Switching Software icon to evoke the operation menu, then select a range of Auto-Scan Period.	---	Autoscan duration adjust to (10 ~ 60 seconds)
Stop Autoscan	---	While autoscanning, right-click the KVM Switching Software icon to evoke the operation menu, and then select Stop Auto-Scan to deactivate autoscanning.	---	Stop Autoscan during scan mode
Beeper	---	Right-click the KVM Switching Software icon to evoke the operation menu, then check the box "Turn on Buzzer".	---	Toggle Beeper on/off
Keep in Dock (Mac only)	---	Right-click the KVM Switching Software icon to evoke the operation menu, and then select "Keep in Dock".	---	KVM switching icon will be on the system tray of your desktop
Open at Login (Mac only)	---	Right-click the KVM Switching Software icon to evoke the operation menu, then select "Open at login".	---	Operate Switcher Software and login
Fix Audio Port	---	Right-click the KVM Switching Software icon to evoke the operation menu, then check the box "Fix Audio Port at PC" and select the desired PC port.	---	Check this option and then select the computer to fix the audio/mic port to the selected computer. Once this option is checked, the audio/mic port will be fixed and become non-switchable.

### Notes:

1. Each keystroke in hotkey sequence should be pressed within two seconds. Otherwise, the hotkey sequence will not be validated.