

Quick Installation Guide

BUY ON
www.cablematic.com



2-Port HDMI USB Cable KVM Switch

UHV-TA2

Thank you for purchasing the UHV-TA2, 2-Port HDMI USB Cable KVM Switch! With our highly reliable and quality product, you can enjoy countless benefits from using it.

INTRODUCTION

To ensure ultimate video compatibility requirements on recent operating systems, the UHV-TA2, 2-port HDMI USB cable KVM switch, features advanced A.S.R. technology which supports all-time DDC emulation so that the video compatibility will be as constant and stable as it should be. This all-time DDC emulation can get rid of those problems that are related to the absence of appropriate DDC data on the KVM switch when port switching is taken place.

Equipped with UHV-TA2 KVM switch, for computers running Windows/Mac operating systems, a KVM Switching Software will facilitate your KVM switching operations such as computer selection and hotkey sequence programming, autoscanning, autoscan delay time programming, independent/simultaneous audio & computer switching, etc.

The UHV-TA2, 2-Port HDMI USB Cable KVM Switch, offers USB 2.0 interface technology for Plug-and-Play. In addition to connect

to mouse and keyboard, these two USB 2.0 ports can also be connected to other high-speed USB devices. You can enjoy maximum flexibility and convenience with its compact and one-piece design.

INSTALLATION

1. Take the Support CD to follow the steps below for KVM Switching Software installation.
2. Insert the Support CD into your CD drive, and the installation interface will pop up (If the Autorun feature has not been enabled on your computer, just find the Autorun.exe on the CD and double-click it to start.).

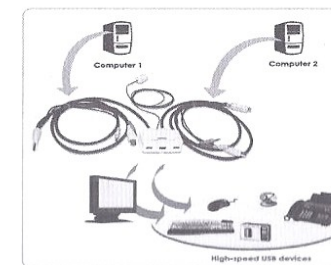


3. Click the "Software Installation for Window" to start Windows switching software installation.
To install Mac version, please copy the file (*.pkg format) to the local hard disk and install it from there.
4. If the installation is complete, right-click a KVM Switching icon on the system tray of your desktop to evoke the operation menu.



Note: The Mac version of the KVM switching software supports Mac OS 10.4 (Tiger) and later. Earlier version of the Mac OS might or might not work well with it.

5. Connect the shared keyboard, mouse, monitor, speaker/headphone, and microphone to the corresponding port on your KVM Switch.
6. Connect each KVM PC port to a computer.
7. Connect each of your USB device to the USB 2.0 device ports. After these peripheral connections are made, the installation is complete. Now you can operate the KVM Switch.



OPERATION

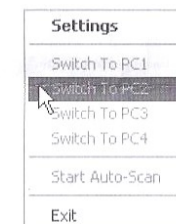
There are three methods to control your KVM Switch for computer and Audio/Mic port selection: using (1) QuickSwitch Button (a wired remote control), (2) KVM Switching Software, or (3) Keyboard hotkey.

- (1) QuickSwitch Button (a wired remote control)

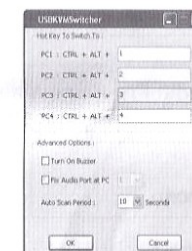
The QuickSwitch button is a wired remote control that allows you a direct switching control. Simply press the button to toggle between the two computers.

- (2) KVM Switching Software (Windows & Mac platform)

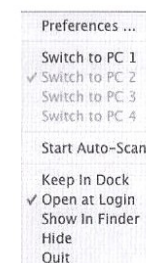
For KVM Switching Software, please refer to the "Quick Reference Sheet".



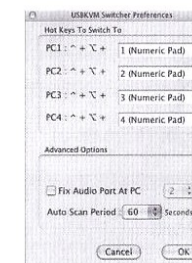
Windows: Operation Menu



Configuration Dialog Box



Mac: Operation Menu



Configuration Dialog Box

- (3) Keyboard Hotkeys

For Windows, the computer toggle-switching is "Scroll Lock + Scroll Lock". For Mac, please refer to Define Hotkey Preceding Sequence in the Quick Reference Sheet. Each keystroke hotkey sequence should be pressed within two seconds. Otherwise, the hotkey sequence will not be validated.

Quick Reference Sheet

Command	QuickSwitch Button	Switching Software	Keyboard Hotkeys ¹	Description
Select PC Port	Press the button to toggle between the two computers.	Right-click the KVM Switching icon to evoke the operation menu, then select whichever computer that is available for switching.	Scroll Lock + Scroll Lock	Select PC port
Next lower PC port	Press the button to toggle between the two computers.	Right-click the KVM Switching icon to evoke the operation menu, then select whichever computer that is available for switching.	Scroll Lock + Scroll Lock	Next lower PC port
Next higher PC port	Press the button to toggle between the two computers.	Right-click the KVM Switching icon to evoke the operation menu, then select whichever computer that is available for switching.	Scroll Lock + Scroll Lock	Next higher PC port
Define Hotkey Preceding Sequence ²	---	Right-click the KVM Switching icon to evoke the operation menu, and then select Settings (Windows) / Configuration Dialog Box (Mac OS).	---	User-definable hotkeys sequence for computer selection is "Ctrl +Alt+ [command key]". For Mac, instead of Scroll Lock key, you may use User-definable hotkey sequence to switch.
Autoscan	---	Right-click the KVM Switching icon to evoke the operation menu, then select Start Auto-Scan to activate autoscanning.	---	Starts Autoscan
Autoscan with Programmable Delay Time	---	Right-click the KVM Switching icon to evoke the operation menu, then select a range of Auto-Scan Period.	---	Autoscan duration adjust to (10 ~ 60 seconds)
Stop Autoscan	---	While autoscanning, right-click the KVM Switching icon to evoke the operation menu, and then select Stop Auto-Scan to de-activate autoscanning.	---	Stop Autoscan during scan mode
Beeper	---	Right-click the KVM Switching icon to evoke the operation menu, then check the box "Turn on Buzzer".	---	Toggle Beeper On/Off
Keep in Dock (Mac only)	---	Right-click the KVM Switching icon to evoke the operation menu, and then select "Keep in Dock".	---	KVM switching icon will be on the system tray of your desktop
Open at Login (Mac only)	---	Right-click the KVM Switching icon to evoke the operation menu, then select "Open at login".	---	Operate Switcher Software and login
Fix Audio Port	---	Right-click the KVM Switching icon to evoke the operation menu, then check the box "Fix Audio Port at PC" and select the desired PC port.	---	Check this option and then select the computer to fix the audio/mic port to the selected computer. Once this option is checked, the audio/mic port will be fixed and become non-switchable.

Notes:

1. Each keystroke hotkey sequence should be pressed within two seconds. Otherwise, the hotkey sequence will not be validated.

2. User-definable Preceding sequence = ScrLK, CAPS, F12 or NUM LOCK.

