

USB 3.0 PCI Express Adapter User Guide

USB 3.0 Features

Compliant with USB 3.0 specification Revision 1.0

- Supports the following speed data rate as follows :Low/Full/High & Super-speed.(1.5/12/480/5G Mbps)
- Supports 4 downstream ports for all speed
- Compliant with Intel's extensible Host Controller Interface(xHCI) specification revision 0.95
- Compliant with PCI Express Base Specification 2.0
- Supports PCI Express Card Electromechanical Specification 2.0
- Supports PCI Bus Power Management Interface Specification revision 1.2
- Single-lane (x1) PCI Express throughput rates up to 5 Gbps
- Each USB port supplies maximum +5V / 900mA power output to USB device.

Package Contents

This PCI Express USB 3.0 Card package includes the following:

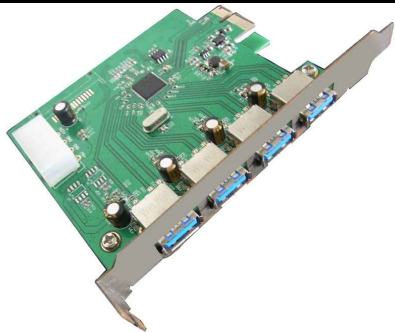
- USB 3.0 PCI Express Adapter Card
- CD Driver
- User Manual

OS Supported

- Windows® XP/Vista and Win 7 (32/64-bit)operation system

Configuration

▣ The USB 3.0 Express Adapter Card

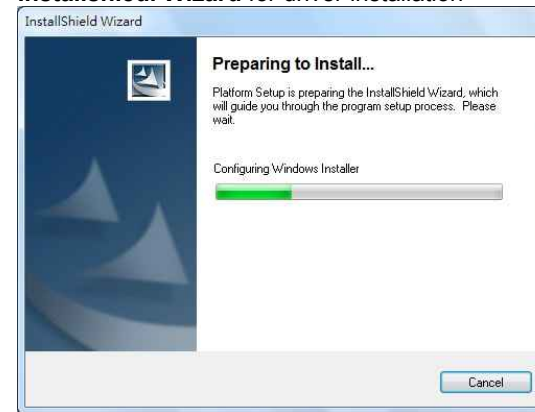


This section provides information on how to install the Super PCI-E drivers for the following operating systems:

Driver Installation:

Star Windows OS,USB3.0 Express card will be detected by system. Please install driver as below steps:

1. Please insert the attached CD into your CD-ROM and click the **InstallShield Wizard** for driver installation



2. Click **"Next"** to continue.



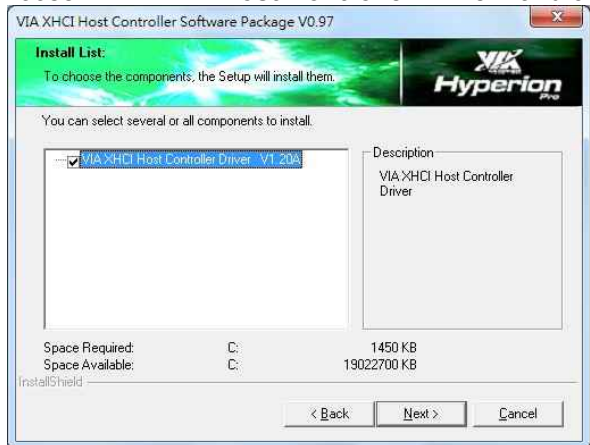
3. Check **“License Agreement”** and click **“I Agree”** to enter to next step.



4. Click **“Next”** to start the driver installation.



4. Choose **“VIA XHCI Host Controller Driver”** and click **“NEXT”**

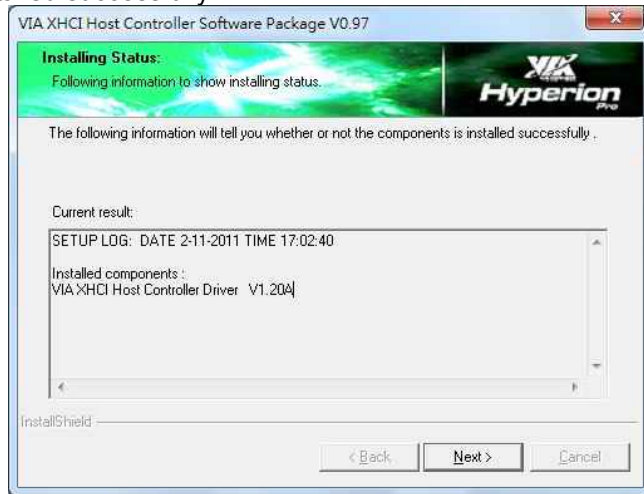


5. To check the driver installation status.



4.

6. The dialogue will show you if the components of the driver is installed successfully.



5.

To verify successful installation in Windows®:

From the main desktop, click on “**My Computer**”, then double-click on “**Control Panel, System**”, and “**Device Manager**”, and “**Universal Serial Bus controllers**” to “**NEC Electronics USB 3.0 Host Controller**”



7. After installation, pls click “**Finsih**”

