

## MP1100EL (-7)

PCI Express 4-Port / 7-Port RS232 Serial Card

### Features

- Compliant with Universal Serial Bus 3.0 specification Revision 1.0.
- Compliant with xHCI (eXtensible Host Controller Interface) specifications Revision 1.0.
- Supports simultaneous operation of multiple USB 3.0, USB 2.0 and USB 1.1 devices.
- Expands four external USB3.0 Super-Speed ports on the system.
- Each USB port supplies maximum +5V / 900mA power output to USB device.
- Built-in 4-pin or 15-pin power connector for receiving extra power supply from system.
- Hot-swapping feature allows you to connect/disconnect devices without powering down the system.
- Certified by CE, FCC, RoHS, and Microsoft WQHL approval.

### Package Contents

- 1 x PCI Express USB 3.0 card
- 1 x Driver CD
- 1 x Instruction Manual

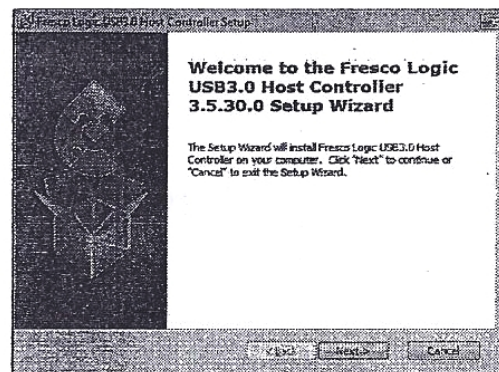
### SoftWare

- Windows2000/XP/2003/Vista/7

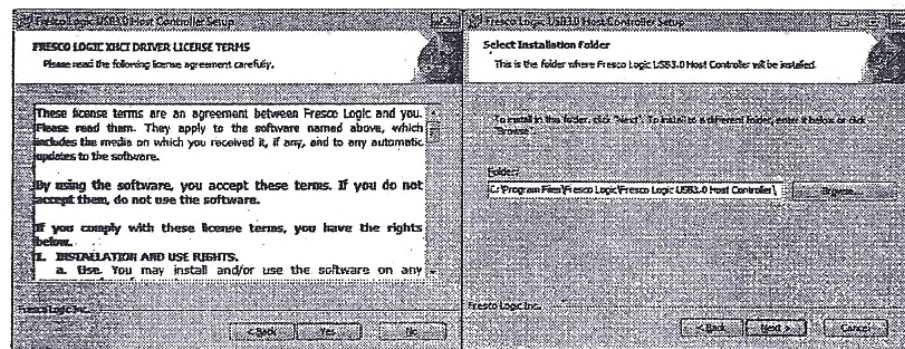
### Driver Installation

Star Windows OS, USB3.0 PCI-E card will be detected by system. Please install driver as below steps

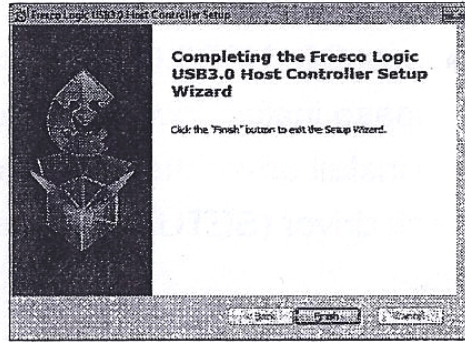
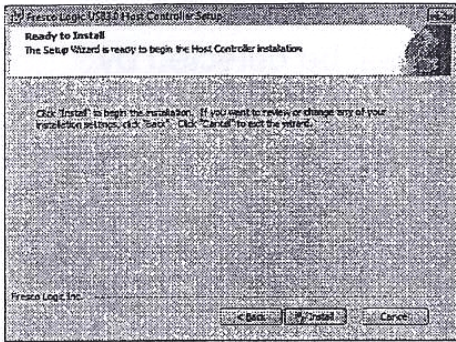
1. Please install driver the attached CD in to your CD-ROM and click driver (SETUP.EXE) and Click "Next" to continue.



2. Click "Yes" to continue.
3. Click "Next" to continue.



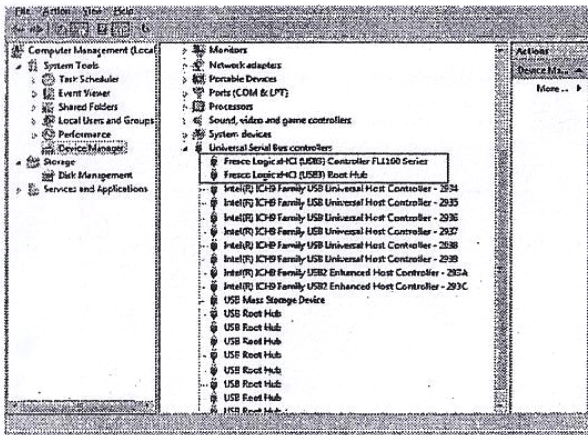
4. Click "Install" to continue.
5. Click "Finish" to end of the driver installation steps.



## Verifying Installation

### 1100EL

From the main desktop, click on "My Computer", then double-click on "Control Panel, System", and "Device Manage", and "Universal Serial Bus controllers" to "Fresco Logic xHCI(USB3) Controller FL1100 Series" and "Fresco Logic xHCI(USB3) Hub" and "Fresco Logic xHCI(USB3) Root Hub".



### 1100EL-7

From the main desktop, click on "My Computer", then double-click on "Control Panel, System", and "Device Manage", and "Universal Serial Bus controllers" to "Fresco Logic xHCI(USB3) Controller FL1100 Series" and "Fresco Logic xHCI(USB3) Hub" and "Fresco Logic xHCI(USB3) Root Hub".

