

USB 3.0 DISPLAY ADAPTER

USER MANUAL

BUY ON

www.cablematic.com

CONTENTS

INTRODUCTION	3
FEATURES	3
SYSTEM REQUIREMENTS	3
NOTES	4
PACKAGE CONTENTS	4
SUPPORTED COMMON DISPLAY RESOLUTION	4
TECHNICAL SPECIFICATIONS	5
QUICK INSTALLATION GUIDE	5
INSTALLATION ON WINDOWS 10/8.1/ 8/ 7	7
DEVICE DRIVER INSTALLATION	7
VERIFYING DEVICE DRIVER INSTALLATION (WINDOWS 8.1)	10
DEVICE DRIVER UN-INSTALLATION	12
INSTALLATION ON WINDOWS XP	13
DEVICE DRIVER INSTALLATION	13
VERIFYING DEVICE DRIVER INSTALLATION (WINDOWS XP)	17
DEVICE DRIVER UN-INSTALLATION	18
FUNCTION DESCRIPTION	19
ACCESS USB DISPLAY ADAPTER UTILITY (WINDOWS 7/ 8/ 8.1/10)	19
USB Display (Trigger) Utility	19
Q&A	23
TROUBLESHOOTING TIPS	24
Known Issues	24
General Recommendation	24
Media Playback	24
Others	25
REGULATORY COMPLIANCE	26

INTRODUCTION

Thank you for purchased the USB 3.0 DISPLAY ADAPTER. By 10 times faster than USB 2.0, the USB 3.0 DISPLAY ADAPTER provides a unique solution to add an extra display for your computer just plug and play. It works as external video card which allows adding an additional display instantly without hassle of open the computer chassis to install the internal graphics card. And, this connected display can act as mirrored or extended desktop of the main display on your computer.

You can experience 1080P video playback through HDMI/DVI/VGA interface and SuperSpeed USB 3.0 for both work and entertainment.

FEATURES

- ◆ USB 3.0 / USB 2.0 specification compliant
- ◆ Supports display resolution up to 2048 x 1152 @ 32bits
- ◆ Supports 1080P video playback
- ◆ Plug-and-Play USB connectivity after software installed
- ◆ Support Multi-display extension of one computer system
- ◆ USB bus-powered
- ◆ Friendly software utility targeted to ease your daily USB display setting

SYSTEM REQUIREMENTS

- ◆ Available USB 3.0 / USB 2.0 port
- ◆ **1~2 USB Displays (office application):**
 - CPU: i3 Dual core 2.8GHz
 - RAM: 2GB memory or higher
- ◆ **3~4 Displays (office application):**
 - CPU: i5 Quad Core 2.8GHz
 - RAM: 4GB memory or higher
- ◆ **5~6 Displays (office application):**
 - CPU: i7 Quad Core 3.0GHz
 - RAM: 8GB memory or higher
- ◆ Full HD Video one display
 - i5 Processor recommended
 - CPU: Quad Core 3.0GHz or higher
 - RAM: 4GB memory or higher
- ◆ Windows 8.1/ Windows 8/ Windows 7 & Windows XP (32 or 64 bit)
- ◆ Mac OS: Snow Leopard (10.6) / Lion (10.7)/ Mountain Lion (10.8)/ Mavericks (10.9)/ Yosemite (10.10) / EL Capitan (10.11)

(Recommended Windows XP & Mac USB 2.0 for office application only)

NOTES

- ◆ Driver update and installation are available from Windows update via an active network connection.
- ◆ Do not recommend to connect USB 3.0 DISPLAY ADAPTER via the external USB Hub.
- ◆ System reboot is required for the driver installation.
- ◆ Windows XP user: “Windows Media Player” is the recommended video playback.

PACKAGE CONTENTS

- ◆ USB 3.0 DISPLAY ADAPTER * 1
- ◆ Driver / Manual CD * 1
- ◆ Quick Installation Guide * 1

SUPPORTED COMMON DISPLAY RESOLUTION

Aspect Ratio	Resolution	Color Depth	Aspect Ratio	Resolution	Color Depth
Wide Screen Display			Standard Display		
16:9	2048 x 1152	16,32 bits	4:3	1600 x 1200	16,32 bits
16:10	1920 x 1200	16,32 bits	4:3	1400 x 1050	16,32 bits
16:9	1920 x 1080	16,32 bits	5:4	1280 x 1024	16,32 bits
16:10	1680 x 1050	16,32 bits	4:3	1280 x 960	16,32 bits
16:9	1600 x 900	16,32 bits	4:3	1152 x 864	16,32 bits
16:10	1440 x 900	16,32 bits	4:3	1024 x 768	16,32 bits
16:9	1366 x 768	16,32 bits	4:3	800 x 600	16,32 bits
16:9	1360 x 768	16,32 bits			
16:10	1280 x 800	16,32 bits			
15:9	1280 x 768	16,32 bits			
16:9	1280 x 720	16,32 bits			

- ◆ **Monitor refresh frequency: 60 Hz**

TECHNICAL SPECIFICATIONS

Operating System	Windows 10/ 8.1 / 8 / 7 / XP (32bit & 64bit) Mac Snow Leopard (10.6) / Lion (10.7) / Mountain Lion (10.8) / Mavericks (10.9) / Yosemite (10.10) / El Capitan (10.11)
Host Interface	USB 3.0 A type connector
Video Output Connector	DB- 15pin (female) – Model: USB 3.0 - VGA DVI-I (female) – Model: USB 3.0 - DVI HDMI (female) – Model: USB 3.0 - HDMI
Case Material	ABS
Power Source	Bus Powered
Regulatory Compliances	CE, FCC, VCCI and C-Tick RoHS compliant
Environmental Specification	Operating Temperature: 0~50°C Storage Temperature: -10~75°C Humidity: <85% non-condensing

QUICK INSTALLATION GUIDE


Follow these steps to quickly install your new **USB DISPLAY ADAPTER**.

Step 1


Connect the display device (monitor/projector) to the VGA/DVI/HDMI connector of USB DISPLAY ADAPTER and turn on the display device.

Step 2

✳️ **When the Windows OS is Windows 7 or higher with an active network connection**

- Plug in the USB DISPLAY ADAPTER to the USB port of your computer (host PC).
It will launch the driver installation wizard automatically. Please follow the instructions to install the device driver.
- After system reboot, the extended display will be shown on the attached display device (monitor/) projector and an icon  “USB Display (Trigger) Utility” appears in the taskbar. The USB DISPLAY ADAPTER is ready to use now.

※When the Windows OS is Windows XP or there is no network connection

- Insert the Driver/Manual CD into CD-ROM drive; the setup program should be launched automatically. Or, double click “D:\Setup.exe (where D: is the path of your CD-ROM drive) and follow the instructions to install the device driver.
- After system reboot, please plug in the USB DISPLAY ADAPTER to the USB port of your computer (host PC), the device driver will be configured automatically.
- After the driver is configured completely, the extended display will be shown on the attached display device (monitor/projector) and an icon  “USB Display (Trigger) Utility” appears in the taskbar. It is ready to use now.


Windows XP user: Please **reboot** the computer to make sure the USB Display Adapters work correctly.

※Multi-Display Setup

- Connect the display device (monitor/projector) to the VGA/DVI/HDMI connector of USB DISPLAY ADAPTER and turn on the display device.
- Please plug in the additional USB DISPLAY ADAPTER (connected with the display device already) to an available USB port of your computer (host PC), the device driver will be configured automatically. After the driver is configured completely, the USB extended display will be shown on the attached display device.
- Repeat this step for each additional USB DISPLAY ADAPTERS you want to install.

Windows XP user: Please **reboot** the computer to make sure the multiple USB Display Adapters work correctly.

※The screen may flash or go black during installation. It is part of the normal process.

※This  “USB Display (Trigger) Utility” icon won’t be appeared if the USB DISPLAY ADAPTER does not connect to the USB port of computer (host PC).

INSTALLATION ON WINDOWS 10/8.1/ 8/ 7

DEVICE DRIVER INSTALLATION

Installing the device driver enables your computer's operating system to recognize the **USB 3.0 DISPLAY ADAPTER** once it's connected. Please check your operating system and refer to the appropriate installation procedure to begin installing the device driver.

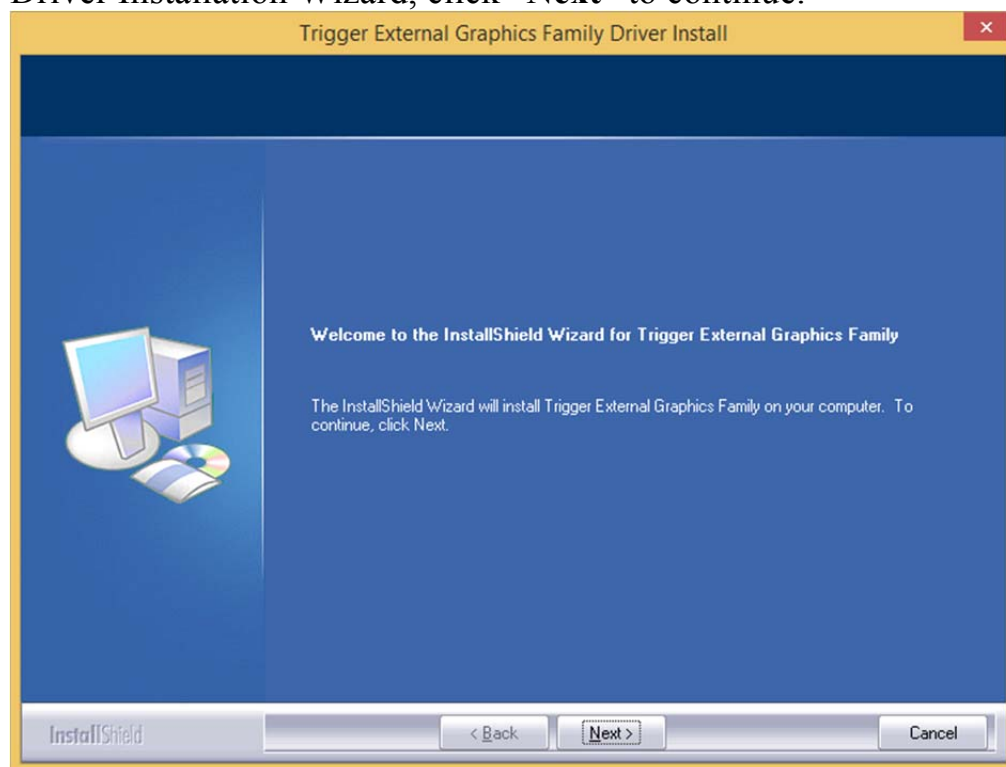
This section illustrates the simple device driver installation procedure for computer running **Windows 8.1** operating system. Please make sure the **USB 3.0 DISPLAY ADAPTER** is **unplugged** from your PC or Notebook before executing the setup program.

Step 1.

Insert the Driver CD into the CD-ROM drive; the setup program should be launched automatically. If setup program does not begin automatically, click Start, Run and double click "**D:\Setup.exe**" (where D: is the path of your CD-ROM drive).

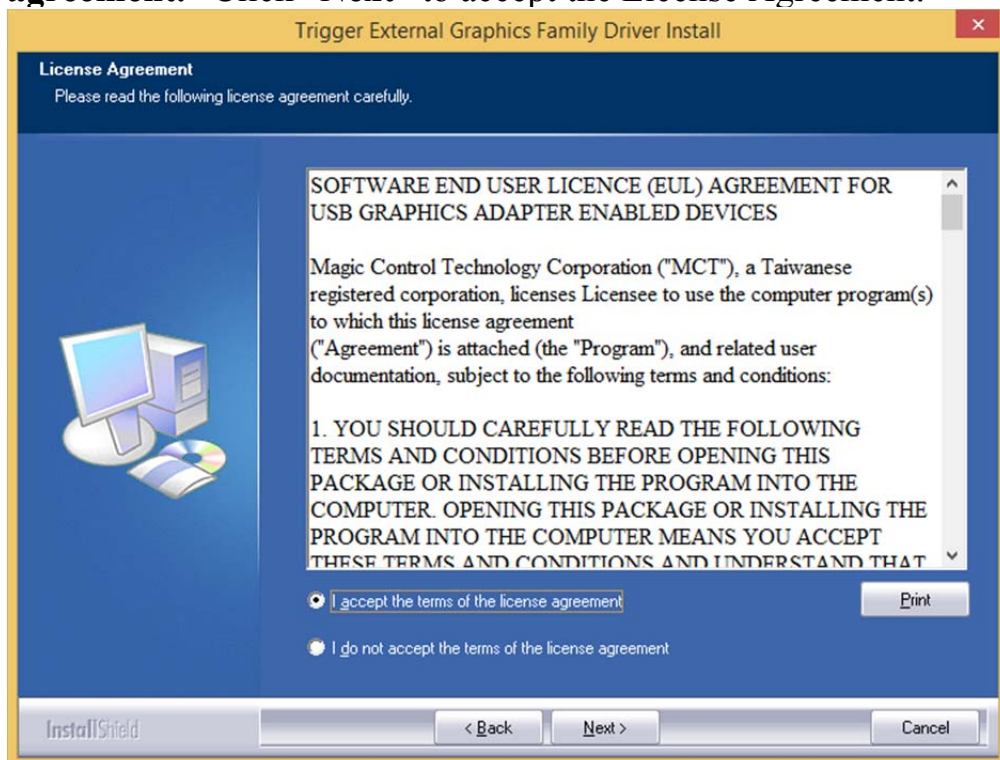
Step 2.

Driver Installation Wizard, click "**Next**" to continue.



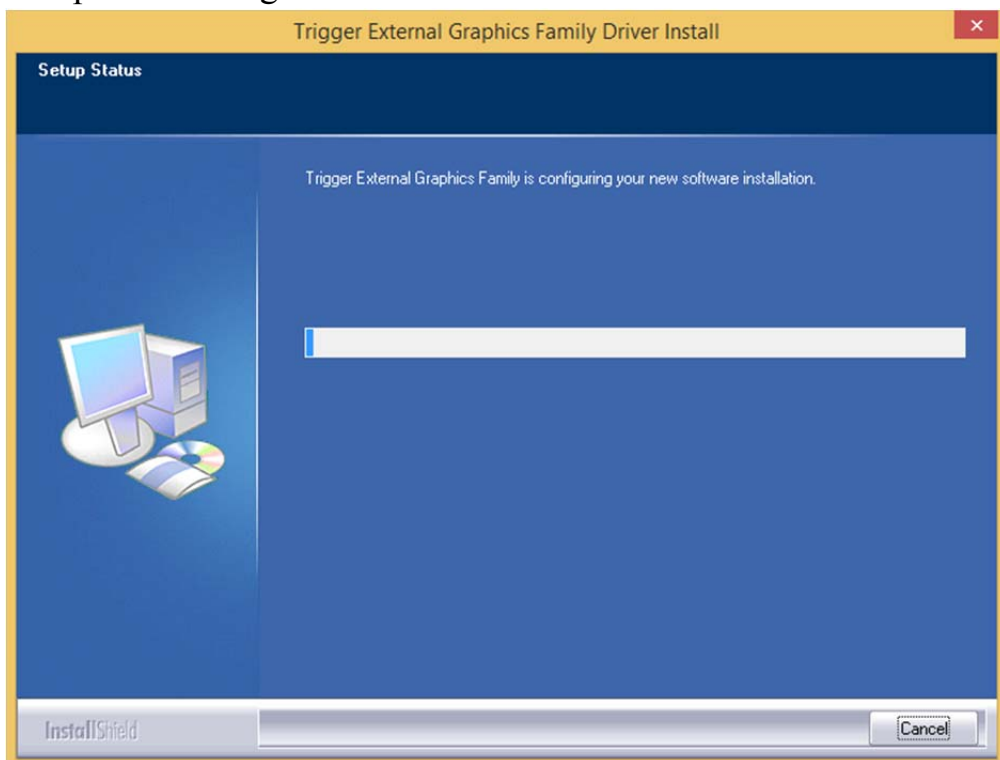
Step 3.

License Agreement; please review it and check **“I accept the terms of the license agreement.”** Click **“Next”** to accept the License Agreement.



Step 4.

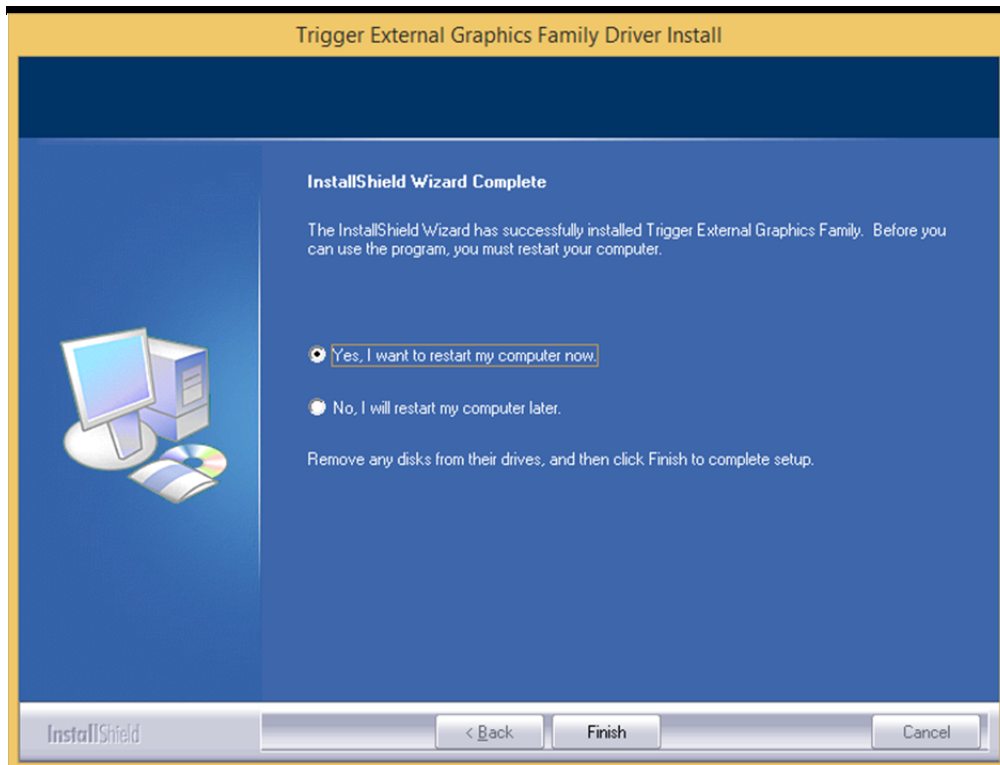
Setup is searching for installed features.....



Setup is searching for installed features...

Step 5.

Select **“Yes, I want to restart my computer now”**, and click **“Finish”** to reboot.

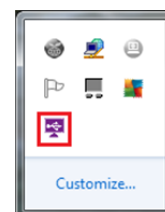


Step 6. HARDWARE DEVICE DRIVER INSTALLATION (AFTER REBOOT)

Please connect the external display device (monitor/projector) to the VGA/DVI connector of **USB 3.0 DISPLAY ADAPTER** and turn on this external display device.

Then plug the **USB 3.0 DISPLAY ADAPTER** into an available USB port of your PC or Notebook. The device driver software setup will begin automatically.

After the driver is configured, you will see there an UI icon “USB Display (Trigger) Utility” on the taskbar. The extended display will be shown on the attached display device. You may begin to use the USB 3.0 Display Adapter with your display device.



Step 7. INSTALLATION OF MULTIPLE USB 3.0 DISPLAY ADAPTERS

Please plug in the additional USB 3.0 Display Adapter (connected with the external display device already) to an available USB port of your computer (host PC), the device driver will be configured automatically. After the driver is configured completely, the USB extended display will be shown on the attached display device.

Repeat this step for each additional USB 3.0 Display Adapters you want to install.
All USB Display devices are now installed completely and ready to use.

※ The “USB Display (Trigger) Utility” icon won’t be appeared if the USB Display Adapter does not connect to the USB host.

※ The screen may flash or go black during installation. It is part of the normal process.

VERIFYING DEVICE DRIVER INSTALLATION (WINDOWS 8.1)

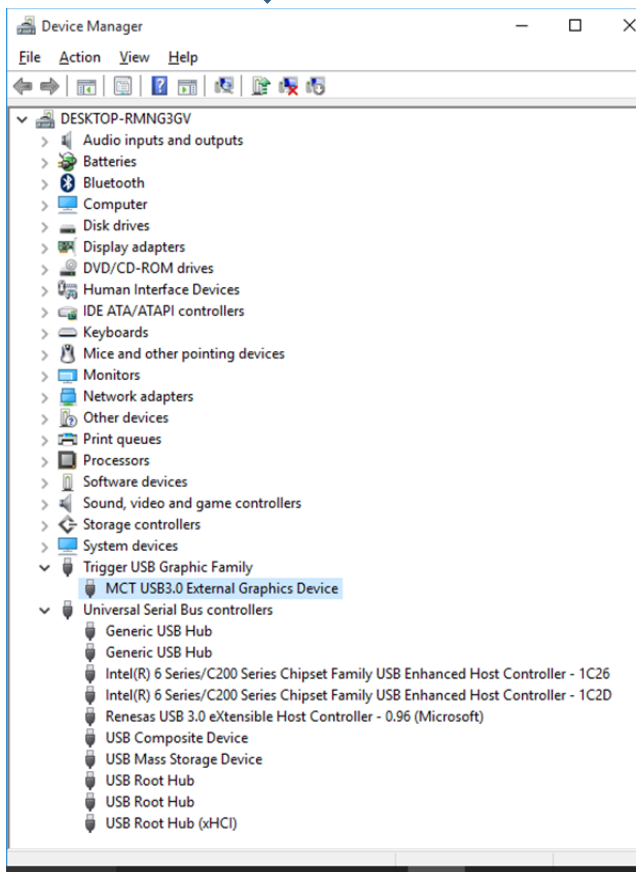
The following procedure allows you to verify the device driver installation.

Swipe in from the right edge of the screen, and then click “**Search**”→ enter “**Device Manager**”. (Right click “Start” at the taskbar, click “Device Manager”)

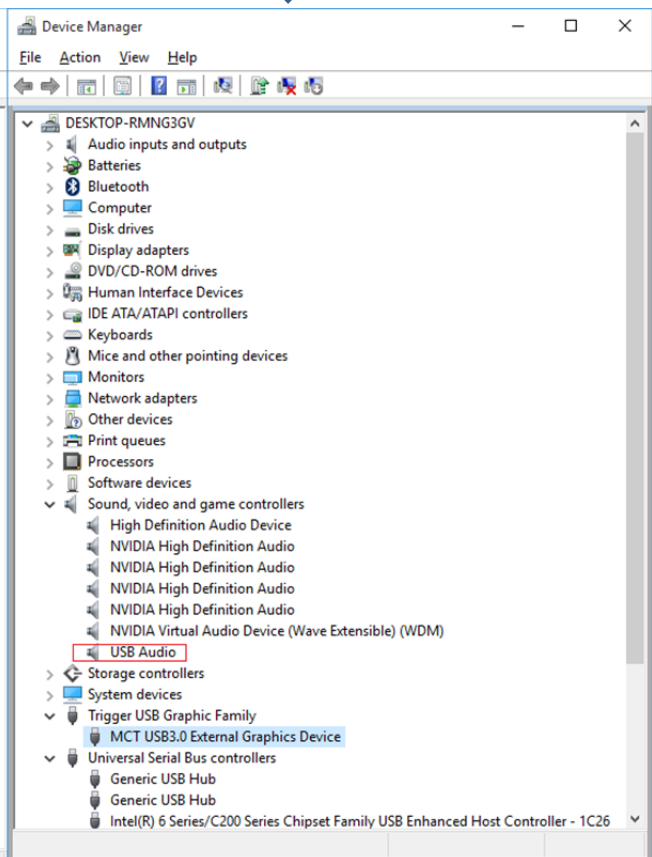
Plug-in the **USB 3.0 DISPLAY ADAPTER**, then double click “**Trigger USB Graphics Family**”. Begin verification by make sure highlighted devices were added to the system.

➤ Single USB 3.0 Display Adapter installation on the computer

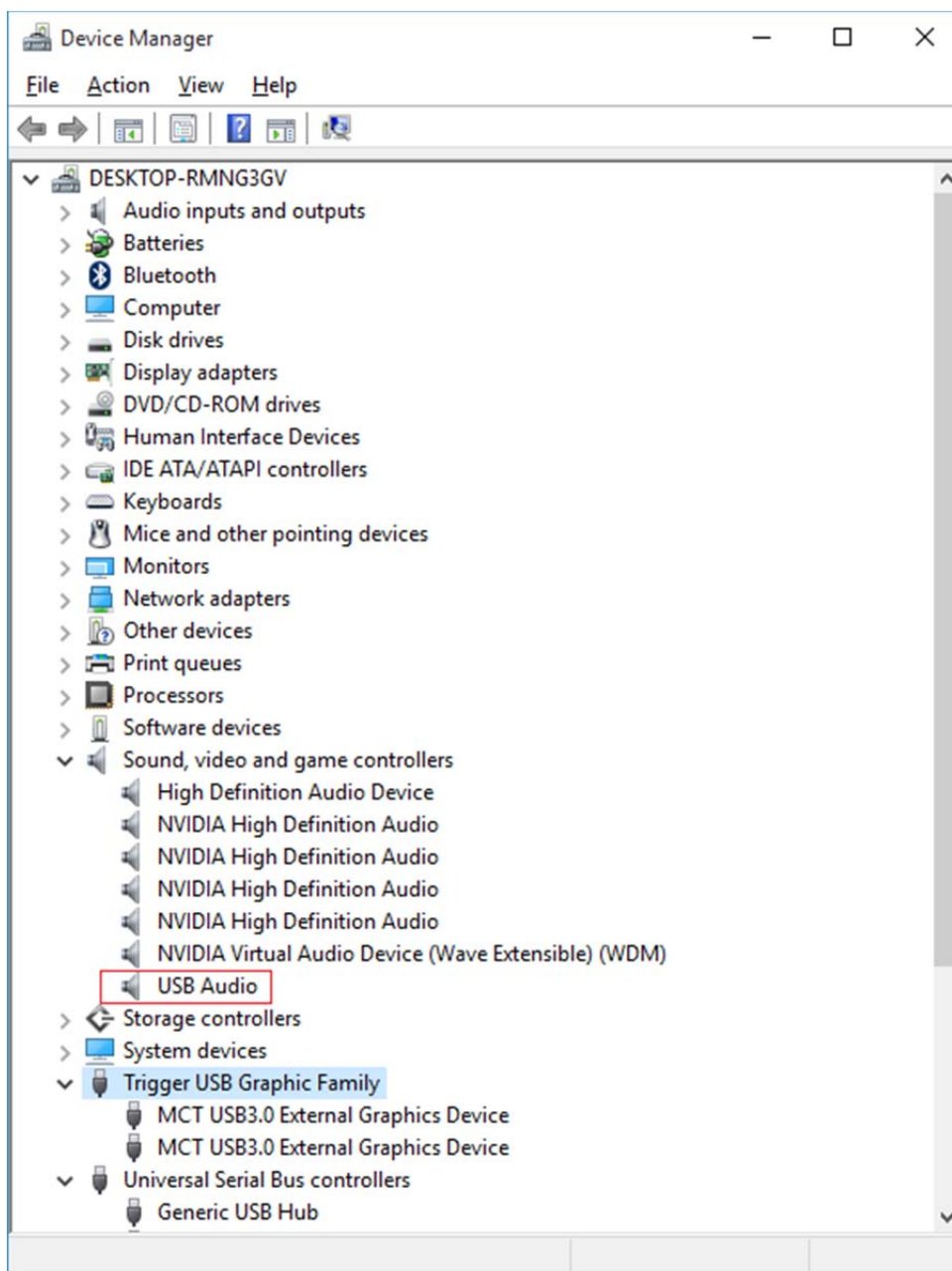
USB 3.0 TO VGA/DVI




USB 3.0 TO HDMI

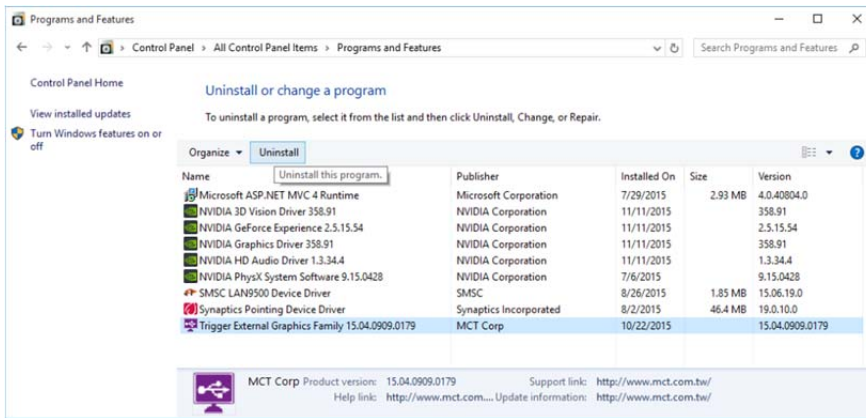


➤ **Multiple USB 3.0 Display Adapters installation on the computer**

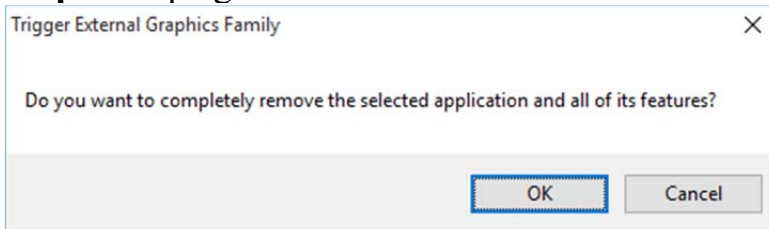


DEVICE DRIVER UN-INSTALLATION

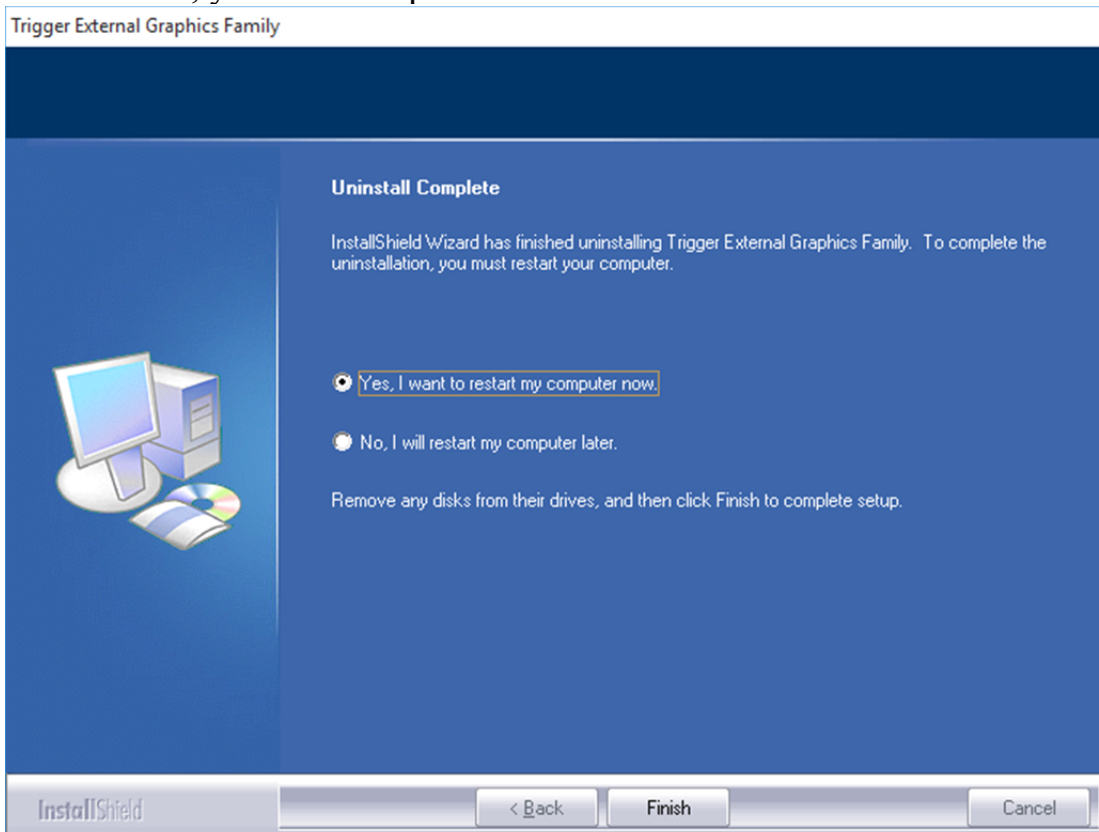
Step 1. Right click “Start” at the taskbar, then click →”Programs and Features”.
Select “ Trigger External Graphics Family 15.xx.xxxx.0179”.
Click “Uninstall” button.



Step 2. Unplug the **USB 3.0 DISPLAY ADAPTER** and click “OK” to continue.



Step 3. Select “Yes, I want to restart my computer now” and click “Finish” to reboot.
After reboot, you will complete the driver un-installation.



INSTALLATION ON WINDOWS XP

DEVICE DRIVER INSTALLATION

Installing the device driver enables your computer's operating system to recognize the **USB 3.0 DISPLAY ADAPTER** once it's connected. Please check your operating system and refer to the appropriate installation procedure to begin installing the device driver.

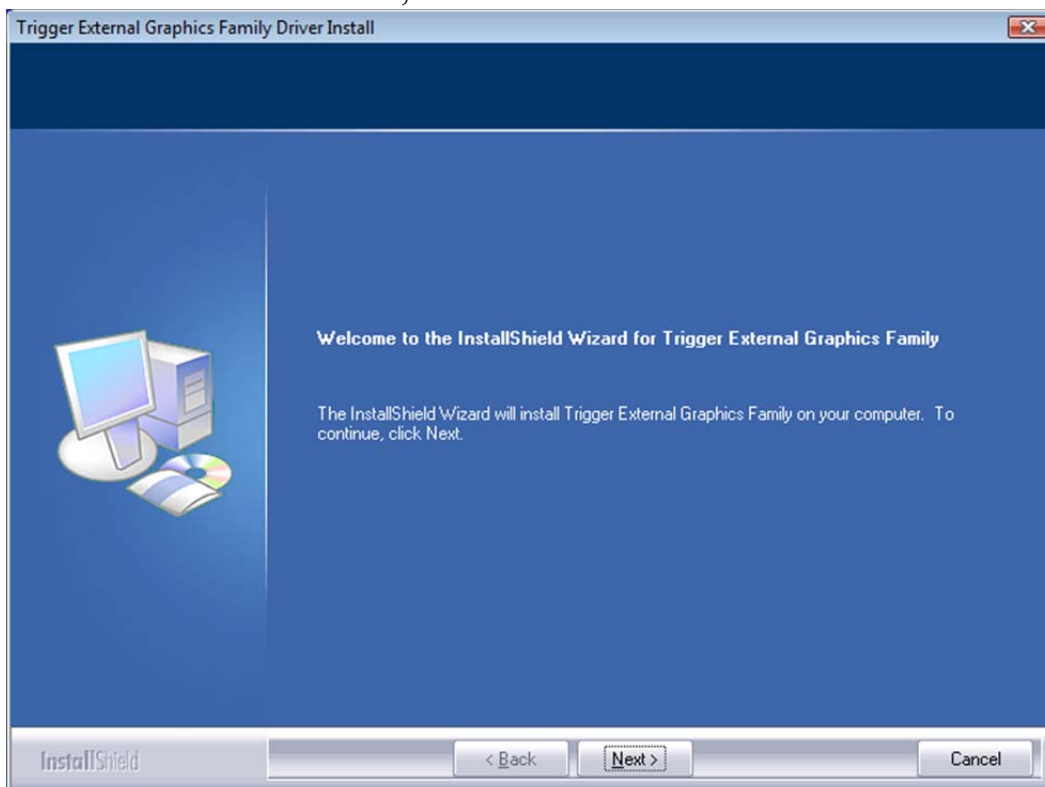
This section illustrates the simple device driver installation procedure for computer running **Windows XP** operating system. **Please make sure the USB 3.0 DISPLAY ADAPTER is unplugged from your PC or Notebook before executing the setup program.**

Step 1.

Insert the Driver CD into the CD-ROM drive; the setup program should be launched automatically. If setup program does not begin automatically, click Start, Run and double click "**D:\Setup.exe**" (where D: is the path of your CD-ROM drive).

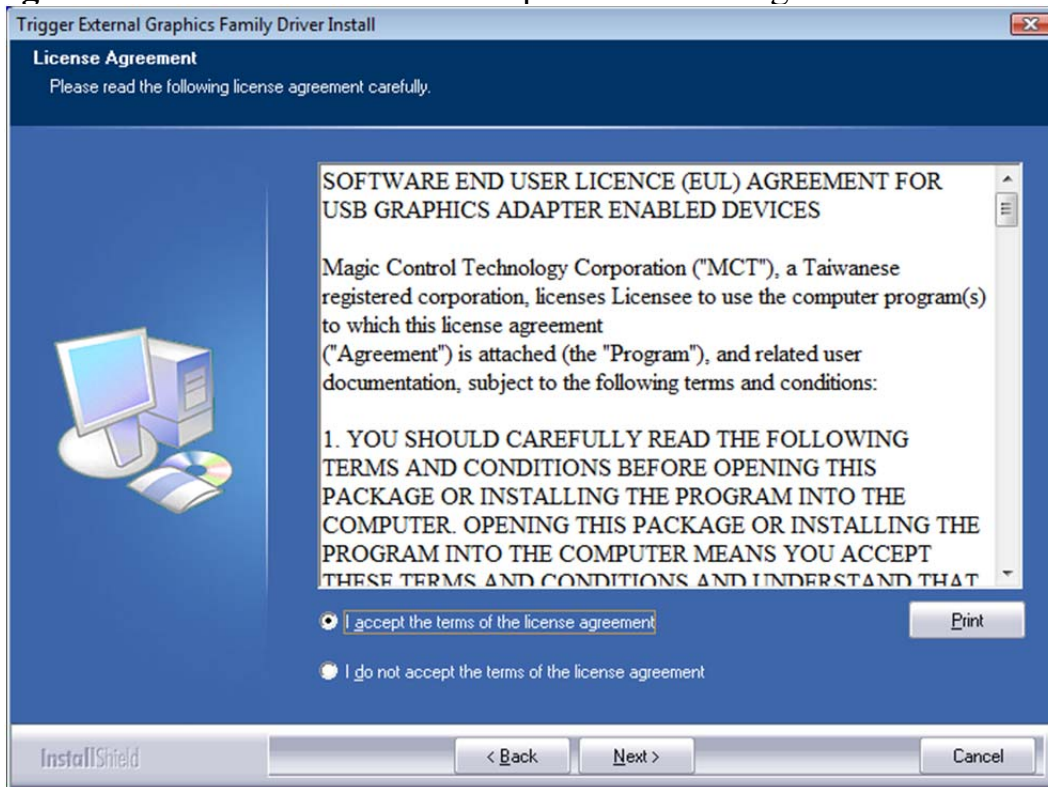
Step 2.

Driver Installation Wizard, click "**Next**" to continue.

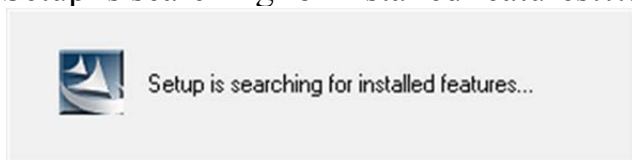


Step 3.

License Agreement; please read it and select “**I accept the terms of the license agreement.**” Click “**Next**” to accept the License Agreement.

**Step 4.**

Setup is searching for installed features.....

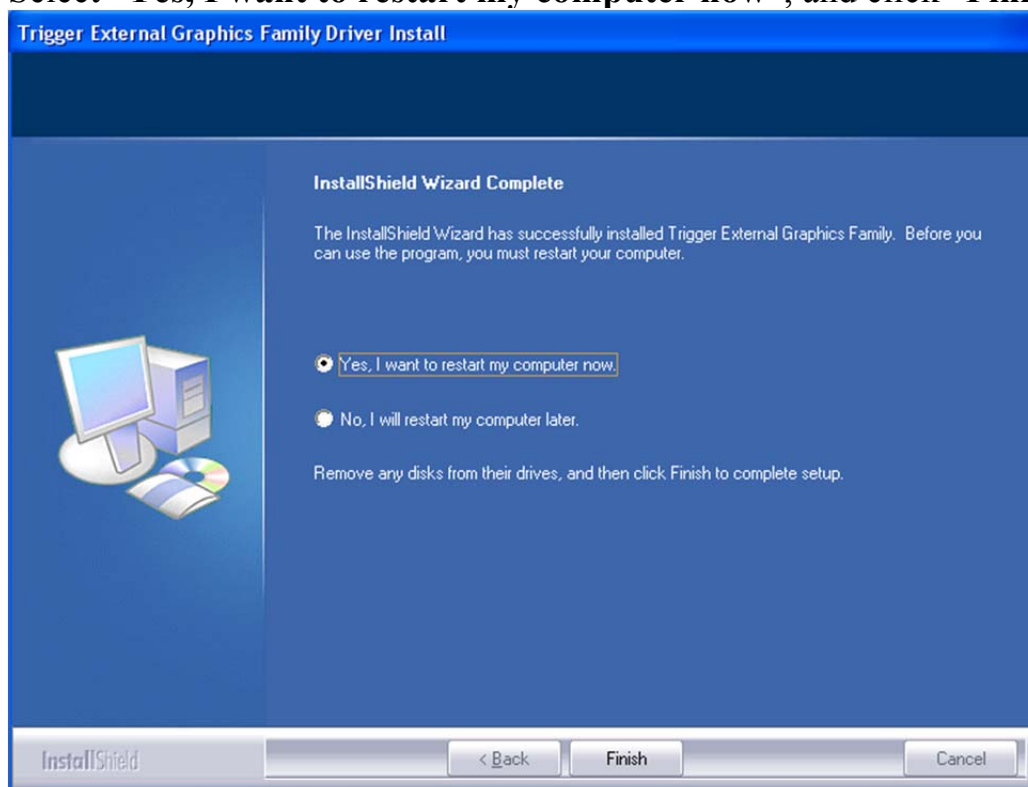


※ You may notice the screen flashes during the driver installation. It is part of the normal process.

※ When the Microsoft Windows Security warning dialogue box appears, please select “**Continue Anyway**” to continue with the installation. This will not affect the device driver installation and the device usage.

Step 5.

Select “**Yes, I want to restart my computer now**”, and click “**Finish**” to reboot.

**Step 6. HARDWARE DEVICE DRIVER INSTALLATION (AFTER REBOOT)**

1. Please connect the external display device (monitor/projector) to the VGA/DVI connector of **USB 3.0 DISPLAY ADAPTER** and turn on this external display device.
2. Then plug the **USB 3.0 DISPLAY ADAPTER** into an available USB port of your computer. The device driver will be configured automatically.

※ When the Hardware Installation Wizard dialog appears, please select “**No, not this time**” and click “**Next**” to continue. Click “**Continue Anyway**” when the Microsoft Software warning dialogue box appears. Then, click “**Finish**” to complete the Hardware Wizard.


3. After the driver is configured, you will see there is an UI icon “USB Display Device (Trigger family)” on taskbar. The extended display will be shown on the attached display device. The USB 3.0 Display Adapter is ready to use now.

※ You may notice the screen flashes during the hardware installation. It is part of the normal process.

Step 7. INSTALLATION OF MULTIPLE USB 3.0 DISPLAY ADAPTERS

Please plug in the additional USB 3.0 Display Adapter (connected with the external display device already) to an available USB port of your computer (host PC), the device driver will be configured automatically. After the driver is configured completely, the USB extended display will be shown on the attached display device. Repeat this step for each additional USB 3.0 Display Adapters you want to install. To make sure the USB 3.0 Display Adapters worked correctly, please reboot the computer.

After reboot the computer, all USB 3.0 Display devices are now installed completely and ready to use.

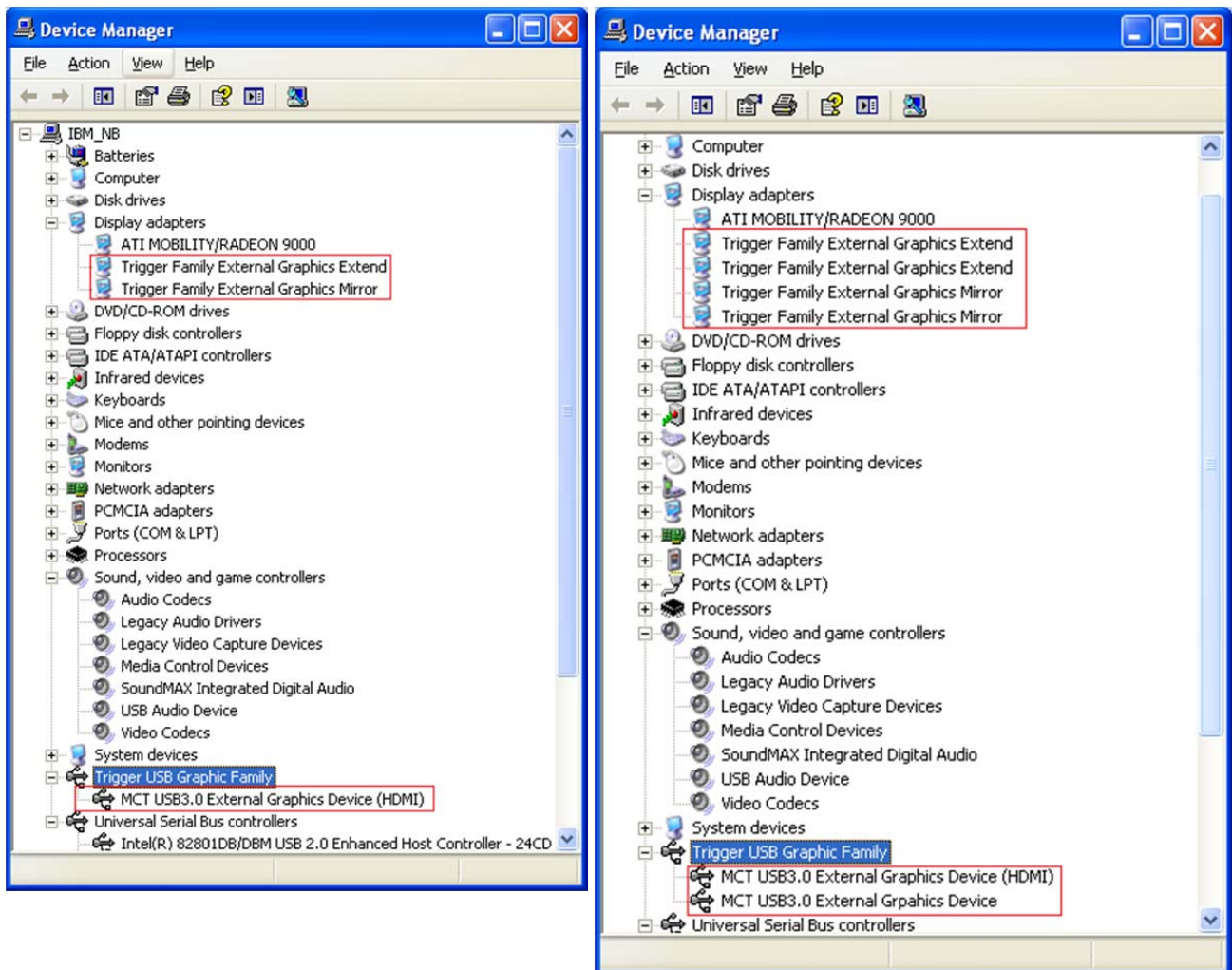
※ The “USB Display Device (Trigger family) ” icon won’t be appeared if the USB Display Adapter does not connect to the USB host.

VERIFYING DEVICE DRIVER INSTALLATION (WINDOWS XP)

The following procedure allows you to verify the device driver installation.

Please right click “My Computer” → “Properties” → “Hardware” → “Device Manager”.

Plug-in the **USB 3.0 DISPLAY ADAPTER**, then double click “**Display adapters**”, and “**Trigger USB Graphic Family**”. Begin verification by make sure highlighted devices were added to the system.

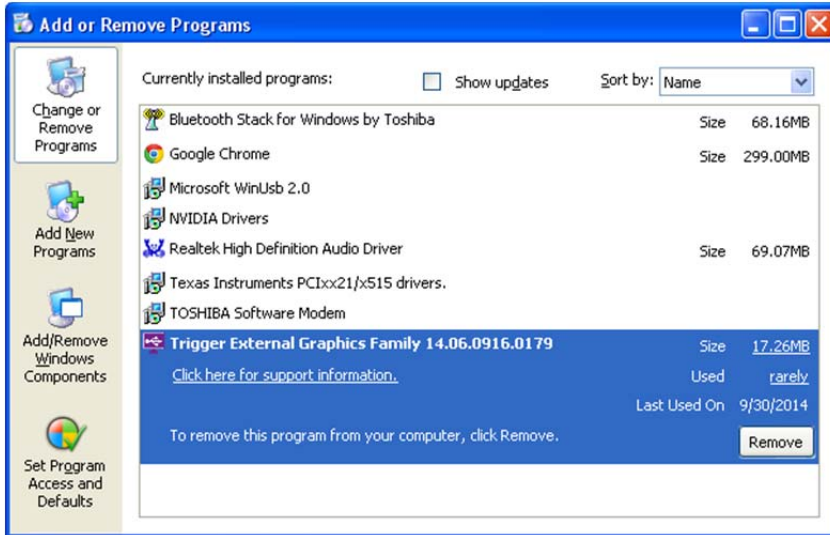


DEVICE DRIVER UN-INSTALLATION

Step 1. Click “Start” → “Control Panel” → “Add or Remove Programs”

Select “ Trigger External Graphics Family 15.xx.xxxx.0179”.

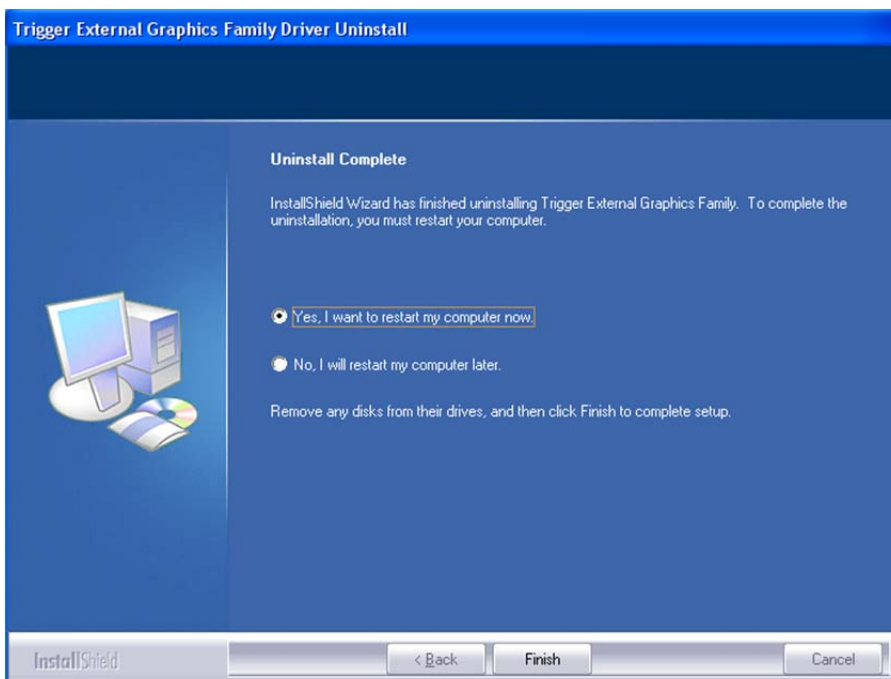
Click “Uninstall” button.



Step 2. Unplug the USB 3.0 DISPLAY ADAPTER and click “OK” to continue.



Step 3. Select “Yes, I want to restart my computer now” and click “Finish” to reboot. After reboot, you will complete the driver un-installation.



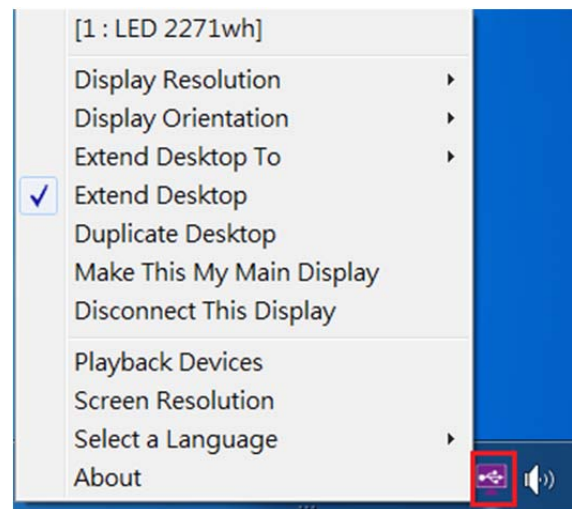
FUNCTION DESCRIPTION

This section describes several friendly functions provided by the **USB DISPLAY ADAPTER** designed to ease your single or multiple USB display experience. A display device described in this section means devices such as monitor and projector...

ACCESS USB DISPLAY ADAPTER UTILITY (WINDOWS 7/ 8/ 8.1/10)

Make sure the USB Display Adapter is attached to the PC, and will see an icon “USB Display (Trigger) Utility” in the taskbar.

Click this icon to access the variety of functions associated to the USB Display adapter.



USB Display (Trigger) Utility

- It won't be shown on the taskbar if the USB Display Adapter does not connect to the USB port of your PC.

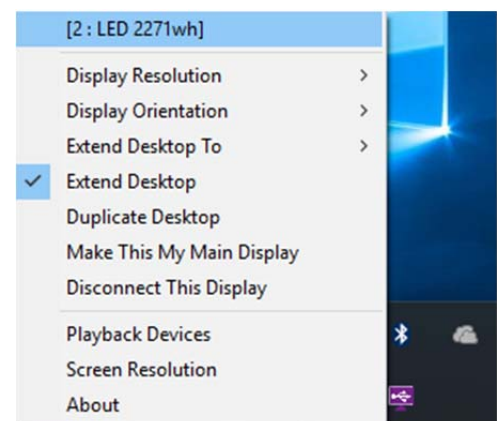
DISPLAY ID

– Smart Display Device ID Detection

USB Display Adapter supports VESA defined DDC/EDID. The utility will show the **display device ID** whenever it is attached to the USB Display Adapter.

If there is no display device attached to the USB Display Adapter, a “**Generic**” ID will be shown.

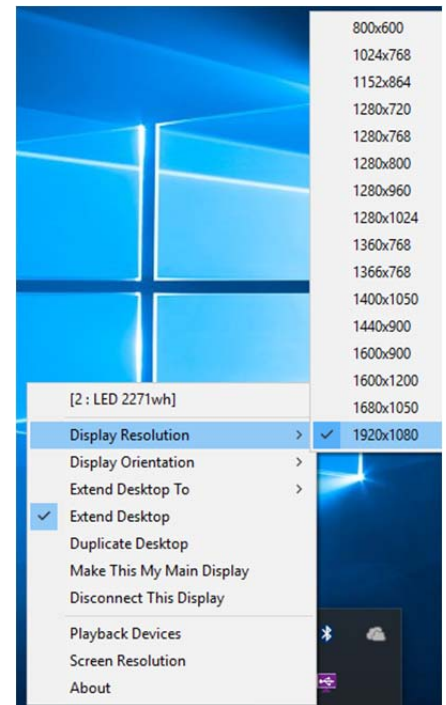
In some cases, the attached display device does not support EDID, the ID will also be defined as “**Generic**”.



DISPLAY RESOLUTION

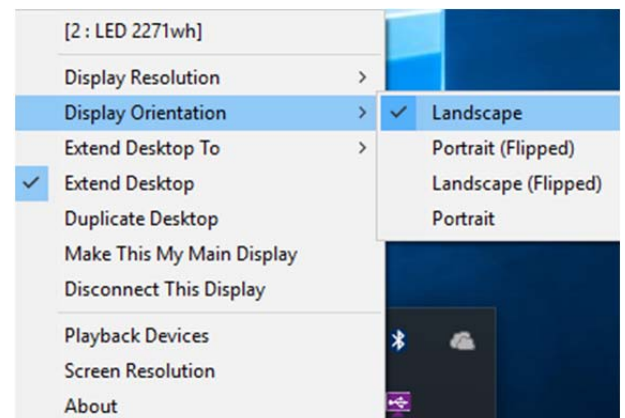
– Fast Access to Display Resolution Setting

The resolution list will show up when you move the cursor over “Display Resolution”. Select and click the resolution you want.



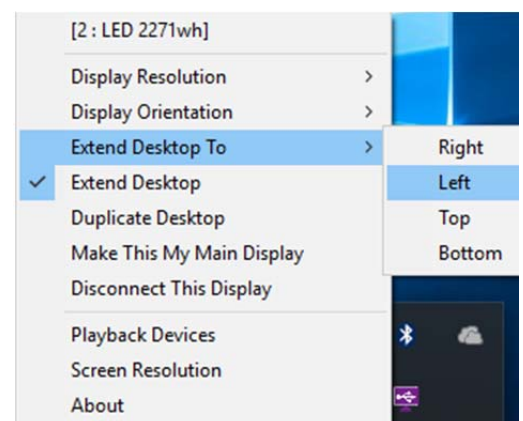
DISPLAY ORIENTATION

There are four options available: “Landscape”, “Portrait (Flipped)”, “Landscape (Flipped)”, and “Portrait” that under the extended or primary display mode.



EXTENDED DESKTOP TO

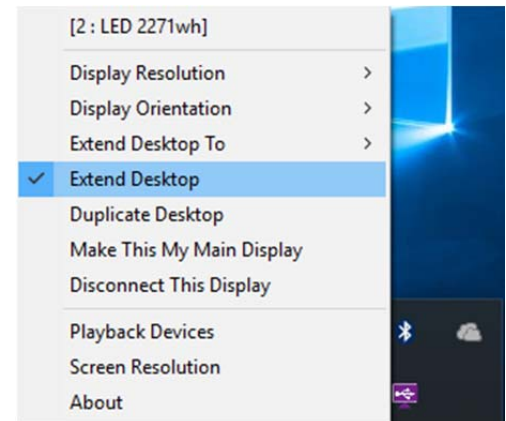
To adjust the position of extended display to be “Right”, “Left”, “Top”, or “Bottom”.



DISPLAY MODE

◆ “EXTEND DESKTOP” (DEFAULT)

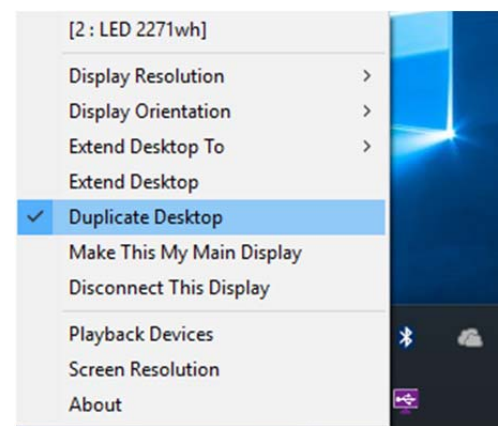
A default display mode, this feature allows the attached USB Display enable display device to work as “Extended” display of the on-board screen.



◆ “DUPLICATE DESKTOP”

This feature allows the same contents of on-board screen to be displayed (mirroring) to the USB Display enabled display device. For example, the on-board screen’s resolution is 1024x768x32bit, and the USB Display enabled device will set as the same resolution.

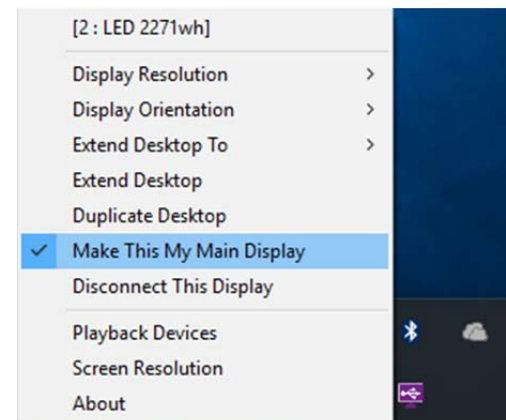
Be note when “Duplicate Desktop” is selected, the function of “Display Orientation” will be disabled automatically.



◆ “MAKE THIS MY MAIN DISPLAY”

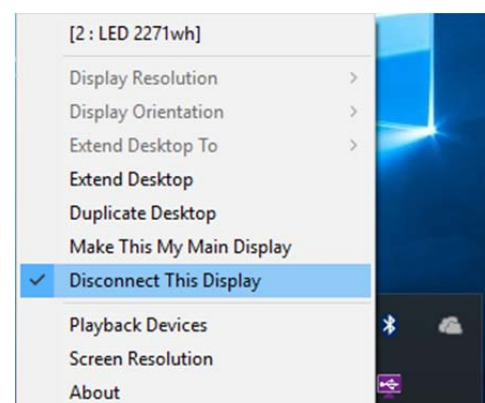
This feature allows USB Display enabled device to act as the main display. The on-board screen will work as the extended display.

Please be advised that some display utility and drivers that shipped with certain AGP and built-in display adapters may prevent this option from working on some Windows XP systems. You may disable the other utility program (usually found in the same taskbar located on the bottom right corner) to make this function work properly.



◆ “DISCONNECT THIS DISPLAY”

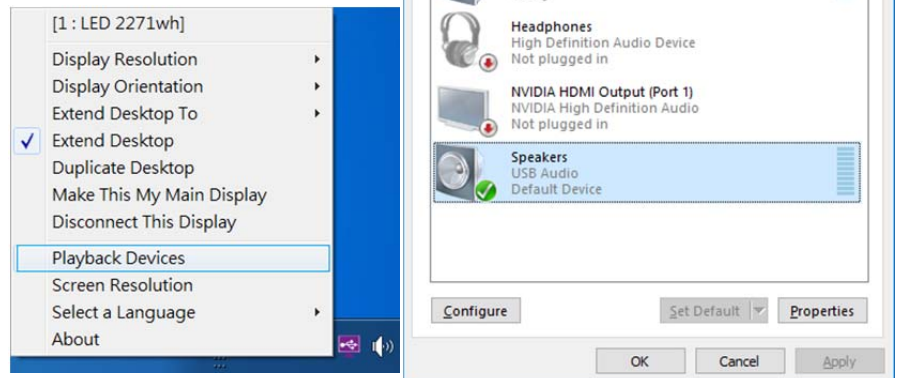
This option disables the video output from the USB Display Adapter.



◆ “PLAY BACK DEVICE”

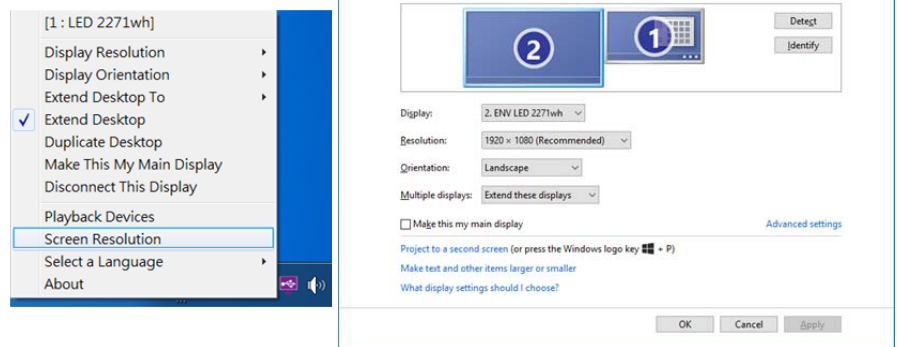
Fast open to the system “Sound”.

The USB Audio is the default audio output when connects with USB HDMI Display Adapter.



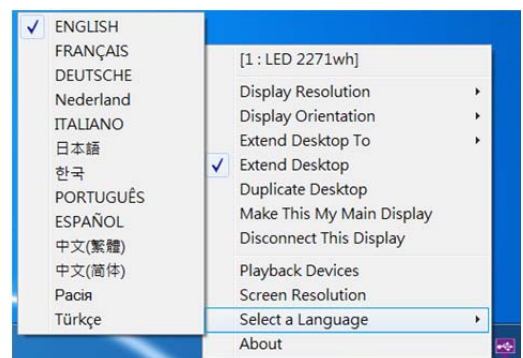
◆ “SCREEN RESOLUTION”

Fast access to the “Screen Resolution”.



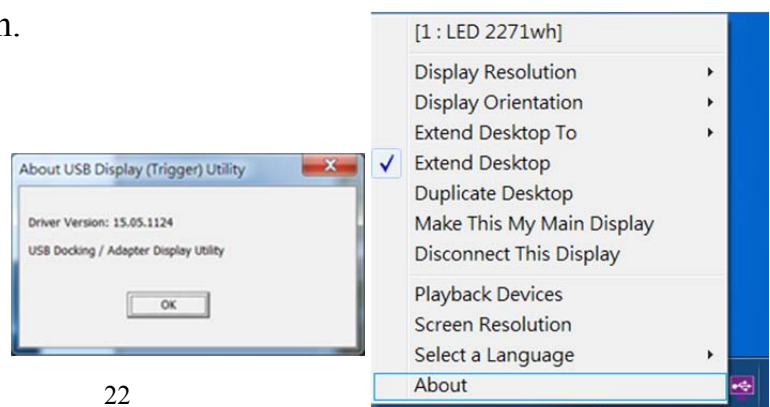
◆ “SELECT LANGUAGE”

Fast access to select a language.



◆ “ABOUT”

To check the current driver version.



Q&A

This section describes the common Q&A regarding to the installation or operation of the USB 3.0 DISPLAY ADAPTER.

Q: Why can't I make the USB 3.0 DISPLAY ADAPTER the primary display?

A: Some video cards ship their product with a utility that prevent other video cards from being set as the primary card. Check the bottom right hand corner taskbar for the utility. Disable the utility before switching our adapter to be the primary display.

Q: Why won't my DVD player work when I move it over to the extended display?

A: Some DVD playback software packages do not support playing on a second display adapter of any kind. You may try to open the program in the secondary display first before playing the DVD.

Q: Why does my mouse not move pass the right side of the screen as it should on extended desktop?

A: Check the display settings and make sure that your display number '2' is on the right side of display number '1'. You can rearrange how Windows treats each display in relation to each other in the Display Properties Settings.

Q: There are lines running horizontally up and down my screen.

A: This is due to a low refresh rate setting. You can change this in the Display Properties Settings Advanced Monitor. Make sure you select the USB 3.0 DISPLAY ADAPTER first and not set the refresh rate higher than what your monitor can support. This may damage your monitor. You can also try to reset/refresh/resynchronize your monitor.

Q: Direct3D does not work?

A: This is a limitation of the adapter on Windows XP/ Windows Vista.

TROUBLESHOOTING TIPS

This section describes the general troubleshooting tips regarding to the installation or operation of the USB DISPLAY DEVICE.

Known Issues

- It is prohibited to install the other USB to Graphics drivers (example: DisplayLink software) at the same Windows operating system.
- Graphics card drivers are up to date.
- Direct 3D is not supported under Windows XP/Vista (supports the XPDM).
- Do not support Standard VGA graphics Adapter / Windows RT (Arm) platforms.
- It may be no problem to install on Windows Server 2008/ 2008 R2/ 2012/ 2012 R2, however MCT does not test or support these platforms.

General Recommendation

- Check to make sure that the device is plugged in correctly to the host system.
- Unplug the USB cable of USB graphics device and re-insert it.
- Check to see that the monitor is connected correctly and is powered ON.
- Make sure to restart your computer after the driver installation.
- Try a different USB port and/or computer.
- Unplug all other USB devices from the system.
- Try connecting the USB cable of USB graphics device to the computer directly (not via the USB Hub).
- Reset/refresh/resynchronize your monitor.

Media Playback



- During video playback on all platforms, please do not change the display mode, position or arrangement of video player window (such as dragging the video player window between main display and attached display). This usually causes the video player to have strange behavior and the video may stop playing. We suggest stopping the video playback, moving the window to the USB graphics device attached display and then selecting the video clip to start playing.
- Downsizing your screen landscape lower than 50% will help smooth out jerky video playback for video running in full screen model.
- You may experience poor video performance on USB graphics device attached display under some low-spec PC system.
- Video rendering using hardware overlays is supported.
- Some DVD playback software packages do not support playing on a second display adapter of any kind. You may try to open the media player in the secondary display first before start playing the DVD.
- Your PC may be lack of certain video codec to support playback of certain video format. Please use the link below to install license free media codec.

K- Lite: http://www.free-codecs.com/download/K_Lite_Codec_Pack.htm

- Video/Media players have different decoding capability under different display modes. For better performance on watching DVD or certain video format on the USB graphics device attached display, it is recommended to use the following license free software.

- Windows Media Player 10 or above
- Media Player Classic: <http://sourceforge.net/projects/guliverkli/>

Others

- Some graphics card, i.e. Intel, prevents other secondary graphics chipset from being set as the primary card. As the result of this, **Primary mode** might not work or the display maybe disabled.
- If you have problems during the boot up process, start your computer in Safe Mode and uninstall the driver. Hold the CTRL key until the Windows startup menu appears and select Safe Mode.
- To verify the driver version that you installed, please click “Control Panel” → “Add or Remove Programs” to check the program:  Trigger External Graphics Family 15.xx.xxxx.0179 (the Number: 15.xx.xxxx.0179 means the driver version) or click the **About** of USB Display (Trigger) Utility  icon at the taskbar.
- Please contact your dealer to obtain the latest driver or for additional assistance if needed.

REGULATORY COMPLIANCE

FCC

This equipment has been tested and found to comply with FCC 47 CFR PART 15 SUBPART B (Class B) & IC ICES-003.

Operation is subject to the following two conditions:

- This device may not cause harmful interference
- This device must accept any interference, including interference that may cause undesired operation of the device.

CE

This equipment is in compliance with the requirements of the following regulations:

EN 55022 : 2006 + A1 : 2007, Class B

EN 61000-3-2 : 2006

EN 61000-3-3 : 1995 + A1 : 2001 + A2 : 2005

EN 55024 : 1998 + A1:2001 + A2: 2003, IEC 61000-4-2 : 1995 + A1: 1998 + A2: 2000

IEC 61000-4-3 : 2006, IEC 61000-4-4 : 2004, IEC 61000-4-5 : 2005

IEC 61000-4-6 : 2003 + A1 : 2004 + A2 : 2006, IEC 61000-4-8 : 1993 + A1 : 2000

IEC 61000-4-11 : 2004

C-Tick

This equipment is in compliance with the requirements of the following regulations:

AS / NZS CISPR22

VCCI

This equipment is in compliance with the requirements of the following regulations:

V-2/09/04 & V-3/09.04, J55022

Disclaimer

Information in this document is subject to change without notice. The manufacturer does not make any representations or warranties (implied or otherwise) regarding the accuracy and completeness of this document and shall in no event be liable for any loss of profit or any commercial damage, including but not limited to special, incidental, consequential, or other damage. No part of this document may be reproduced or transmitted in any form by any means, electronic or mechanical, including photocopying, recording or information recording and retrieval systems without the express written permission of the manufacturer.

BUY ON

www.cablematic.com