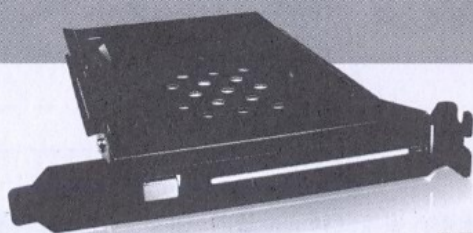


2.5" SATA HDD-ROM



## MRA258 PCI User's manual



## Specifications

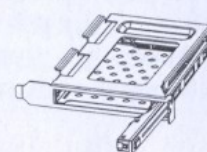
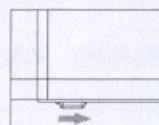
- ◎ Product name: MRA258 PCI
- ◎ OS: Windows Vista/XP/2000/98SE/ME;  
Mac9.3 higher
- ◎ Patented NSS connector gives more than
- ◎ 50,000 times hot swap
- ◎ Interface: Supports SATA(3.0Gb/s)
- ◎ Fits all 2.5" SATA hard disk
- ◎ Supports hot swap
- ◎ Weight: 148g
- ◎ Dimensions: (L)120mmx(W)135mmx(H)24mm
- ◎ Operation Temperature: 0° ~ 55°C

## Package Content

Accessories	Quantity
MRA258 PCI	1
SATA 7P Data Cable	1
SATA15P to 4P+4P Power Cable	1
Screw	1
Manual	1

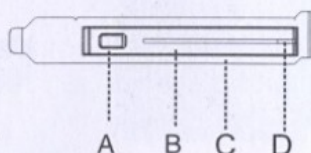
## Switching key

Press the two keys from left to right to eject the panels.



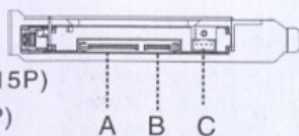
## Front panel

- A. Switching key
- B. HDD front panel
- C. panel
- D. HDD LED indicator



## Rear panel

- A. SATA power connector(15P)
- B. SATA data connector(7P)
- C. LED access port(4P)



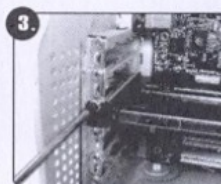
## Installation Proce



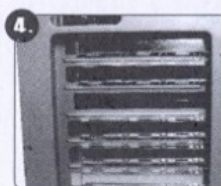
Taking off one of sockets in the back of host case



Putting carefully MRA258 PCI to the socket



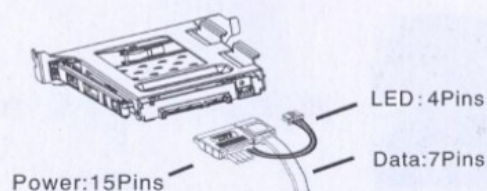
Confirming MRA258 PCI is flat, then screw to fix it.



Finishing Installation

## Connection Process

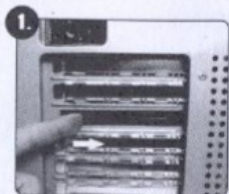
1. Insert the SATA 15P CONN. Into the MRA258 PCI's 15P conn. connect the big power 4P connector to the PC's 4P power plug, and the small 4P LED wire connector to the 4P LED port at the back of MRA258PCI.
2. Insert one end of the SATA 7P cable to MRA258PCI, another end(7P) to either the mother board or the SATA RAID card.





1. Be sure to connect the 4P LED wire, or the LED indicator will not be lighted up.
2. Before connecting the patent 7+15P SATA cable with the PC or with MRA258 PCI HDD-ROM, please check there is no object on or beside the terminals that may effect the mechanical assembly or become a possible source of an electrical short.

## HDD Installing Process



Press on the unlock button of HDD ROM( from left to right)until panel is spring out



Put into the 2.5" HDD ,then close the panel

1. After inserting HDD and closing the front door, carefully push the tray until it is seated into position.Excessive force may damage its mechanical parts.
- 2.If the HDD is inserted backward into the tray, forcing the device may damage the MRA258PCI HDD-ROM.

## Install HDD

- 1.Pull the two keys of HDD-ROM gently from left to right to eject the panel.
- 2.Put the 2.5" HDD into the MRA258 PCI and close the front panel.

1. Do not eject the HDD while it is busy
2. Carefully take the HDD out from MRA258PCI HDD-ROM. The HDD can reach temperatures over 50°C.It will not burn the fingers but should be handled with care.

## Statement

The contents of user's manual are protected under copyright law.Any organization or individual can not make copy and save it in the information bank or the retrieval system by any method or form without the authorization of Wingsonic. Wingsonic is not responsible for any loss in the process of using the HDD-ROM.