

## 3.5" Internal Storage Front Bay

### Introduction

Embedded 2.5" SATA HDD/ SSD reader and USB 2.0 card reader is designed to be part of the desktop PC with the advancement of multimedia and digital applications. It functions as a multi-task transfer media between different types of memory cards and SATA HDD / SSD to meet a wide variety usage.

### 1.Features

- \* Easily mount into 3.5" drive bay, powered by USB port (DC + 5V)
- \* Coming with Slot for 2.5" SATA HDD /SSD and 4 Multi-slot Card Reader (SD/MMC/RS MMC slot; XD slot; MS/MS PRO/MS PRO DUO slot; M2+TF slot.)
- \* offering 2.5" SATA HDD Backup function to PC (Hardware Backup button on panel)
- \* Allowing direct data transfer between different types of memory cards.
- \* Mini size, suitable for all desktop PC enclosure.
- \* Fully backward compatible with USB 1.1 devices.
- \* USB 2.0 high-speed data transfer rate up to 480Mbps.
- \* Two LED indicators for in-use status for HDD slot and Card Reader.
- \* All media slots can be used at the same for data exchange.

### Compatible List of memory card

SM Card, T-Flash, MS Select.0, xD,XD(M)Type,XD(H).  
MS, MS Pro, MS Magic Gate, MS-Pro Magic Gate,HS-MS-Pro Magic Gate,  
MS-DUO, MS Pro-Duo, MS Pro-Duo PSP, MS Pro-Duo Gaming, HS-MS-Pro Duo,MS-DUO MagicGate, MS Pro-DUO MagicGate .  
Secure Digital Card,Mini SD, Extreme SD, Extreme III SD,Ultra II SD  
CF I,CF II,Extreme CF,Extreme III CF,Ultra II CF,HS CF, Micro Drive

### 2. Specification

LED Indicator Power-on LED  
Memory card and SATA HDD/SSD in-use LED  
SATA HDD slot with Hardware data backup button to PC.  
PLUG-n-PLAY  
Power Supply 5V by USB Port  
Operating Temperature: 0 ~ 50°C  
Storage Temperature:-10 ~ 60°C  
Cable USB 2.0 Cable, 60cm length  
**Dimensions:** 96.2(L)\*102.1(W)\*25.4(H) mm  
**Weight:** 230g  
**Certification FCC Class B, CE**  
**OS Supported:**  
Windows 98/SE/ME, Windows 2000, 2003 Server  
Windows XP/Vista 32/64-bit  
Mac OS9.2 or Higher  
Linux OS 2.4.X or Higher

### 3 Package Contents

- 1x 3.5" Int. SATA HDD/ Card Reader
- 1x User Manual
- 1x Color Bezel
- 1x Set of screws
- 1X CD (OTB driver/ Card Reader ICON driver/ User Manual)

### 4. Operation

4.1 Pls turn off PC before installation of the internal front bay with PC.

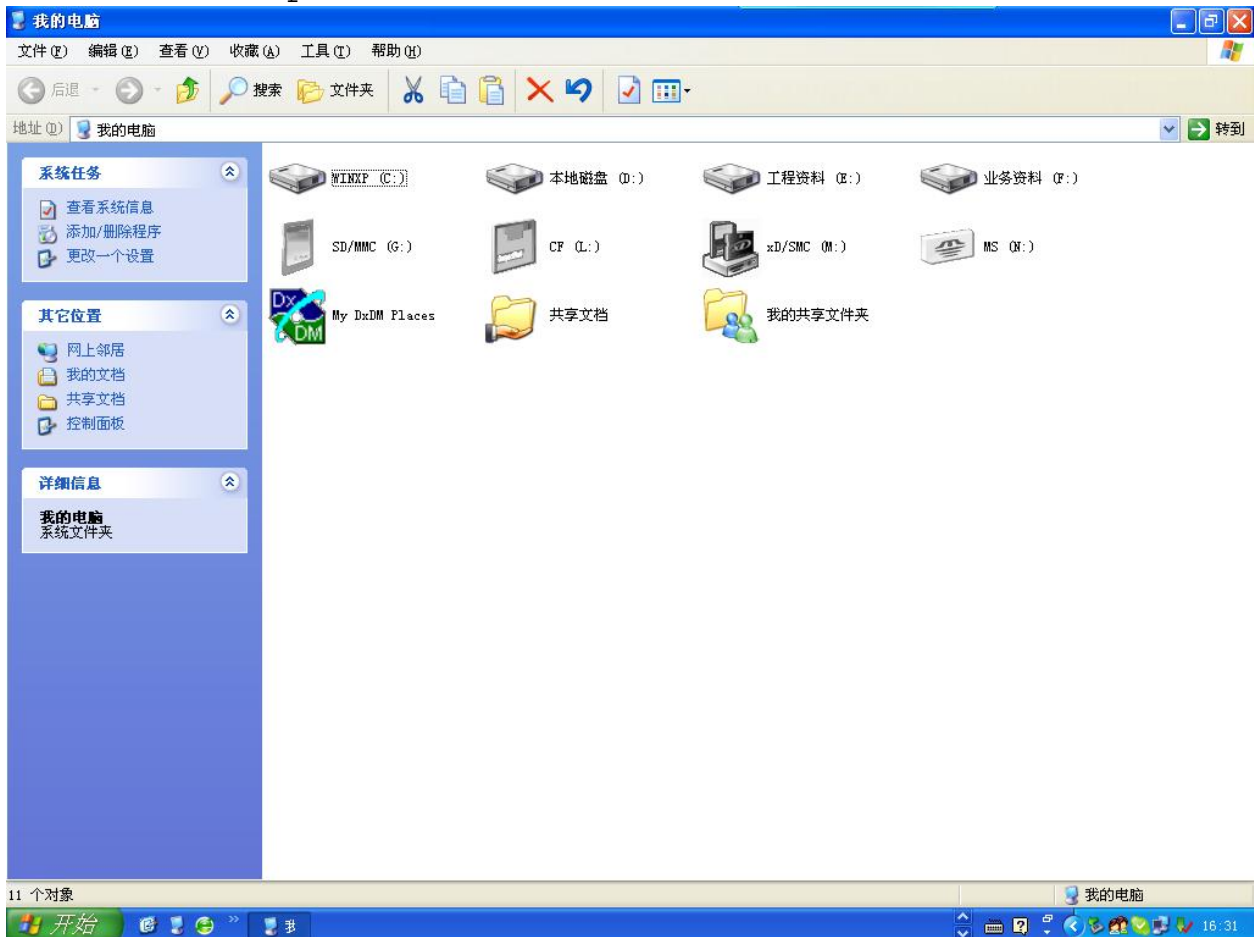
4.2 Pls connecting the USB 9 pin connector with USB2.0 Pin header on PC Motherboard correctly.

4.3 Pls turn on your PC and check if the icons of Memory cards reader/ removable HDD are appeared on "My Computer" before you put PC Case back.

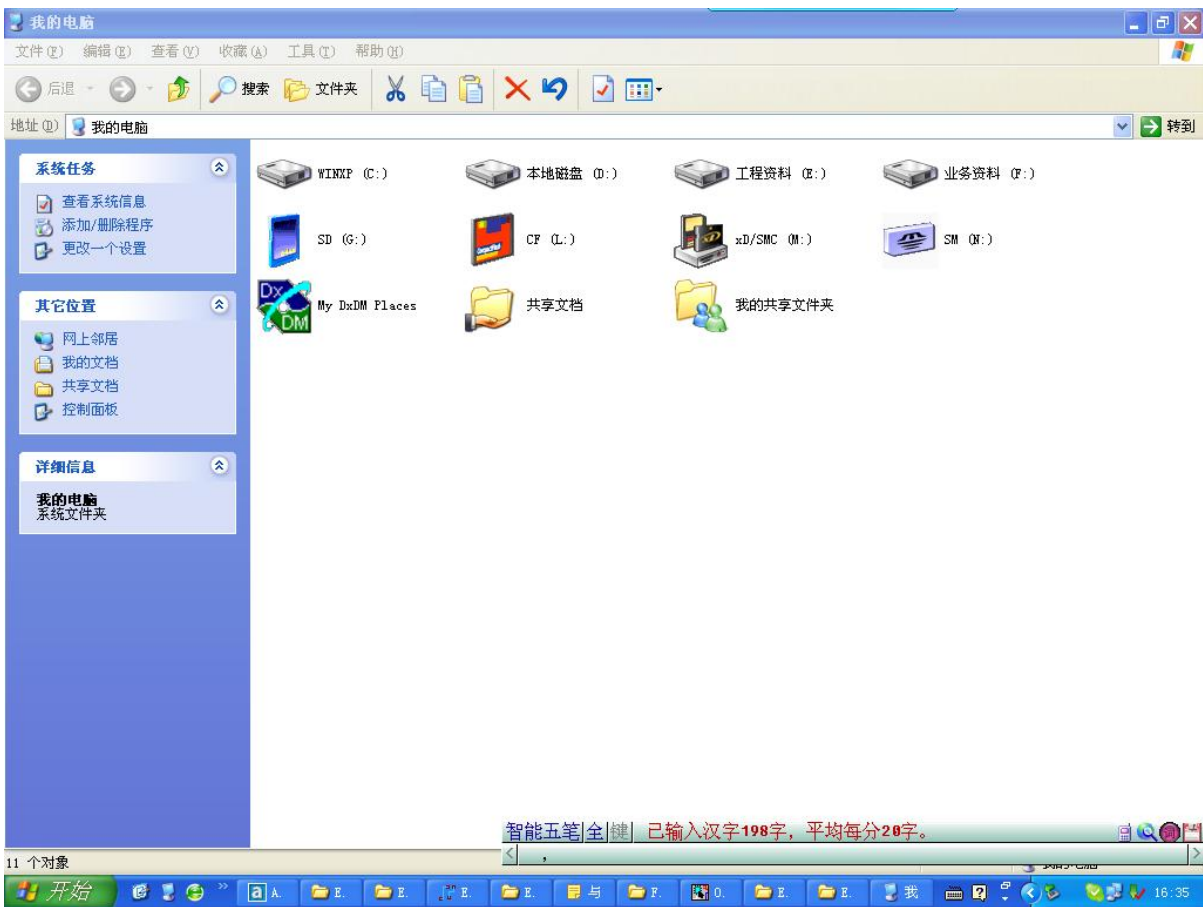
4.4. After checking all slots detected well, pls assemble the internal front bay with the enclosed screws.

4.5 SATA HDD: Plug and Play. If you need to use Data backup function, pls install the driver of PCCONLEEX. Pls refer to the operation detail in the folder "Guide"

4.6 Pls install "ICON Utility" for memory card so that you can be clear to click right icon for memory card reading and writing.  
See the pic as below.



4.7 When you insert memory card into the proper reader slot, the color of icon color will be changed from black-n-white to colorful.



BUY ON  
[www.cablematic.com](http://www.cablematic.com)