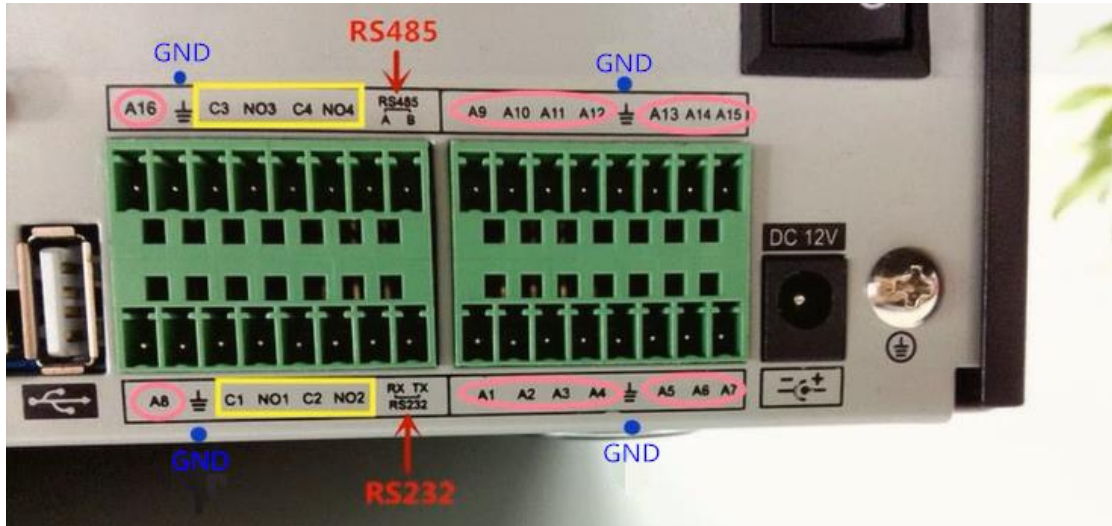


How to set alarm input and output

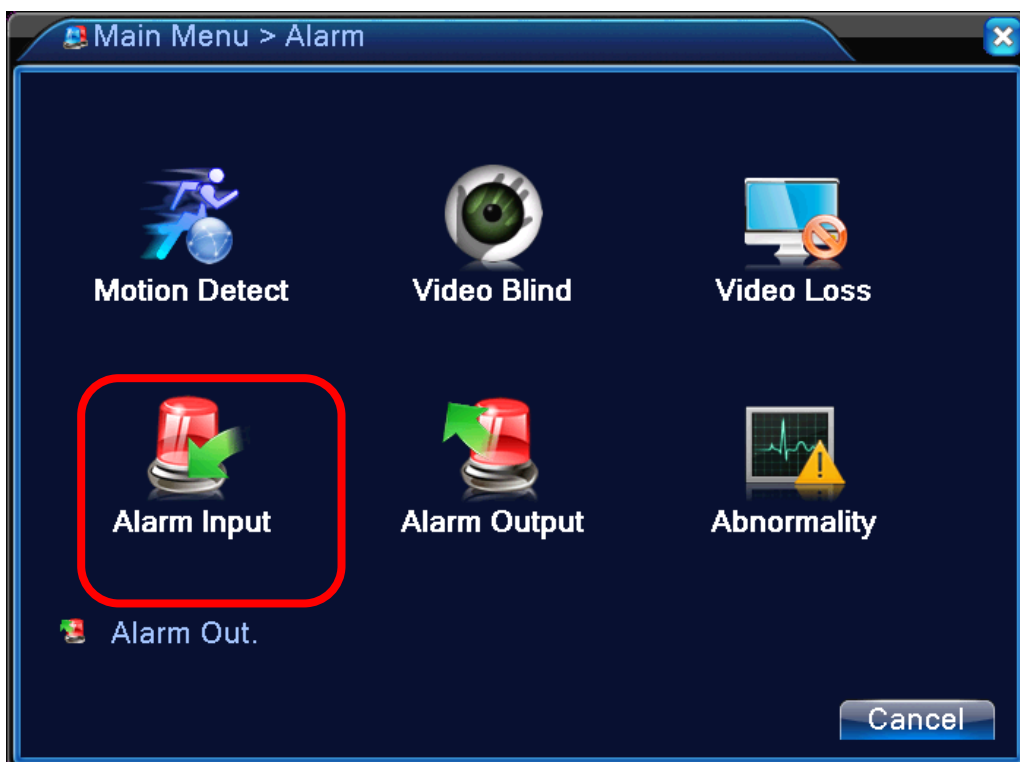
When DVR connect to an external alarm device , we need to set alarm input and output in DVR menu in order to make the alarm device working . When the equipment obtains the external alarm signal, the alarm function is turned on.

- Alarm interface descriptions : below picture is the DVR with 16ch input and 4ch output .



A1-A16 : alarm input : connect the alarm sensor
C1-C4 and NO1-NO4 : alarm output : connect the external alarm device which require external power supply ,normally NO should been connect to power supply + , C should been connect to alarm device + .

- Set alarm input in DVR



Alarm input page in local mode.

The screenshot shows the 'Alarm > Alarm Input' configuration window. A red box highlights the top section containing the following fields:

AlarmIn	1	Enable	<input checked="" type="checkbox"/>
Type	Normal O		

Below the highlighted section, the following settings are visible:

Period	Set	MD Interval	1 Sec.
AlarmOut	1	OutDelay	10 Sec.
Record Channel	1 2 3 4 5 6 7 8 9 10 11 12 13 14 15 16		
Tour	1 2 3 4 5 6 7 8 9 10 11 12 13 14 15 16		
PTZ Activation	Set	PostRec	10 Sec.
Show Message	<input type="checkbox"/>	Send Email	<input type="checkbox"/>
Buzzer	<input type="checkbox"/>	Write Log	<input type="checkbox"/>
FTP upload	<input type="checkbox"/>	Mobile reported	<input type="checkbox"/>

At the bottom, there are three buttons: 'Advanced', 'OK', and 'Cancel'.

Alarm input page in HVR or IP mode .

The screenshot shows the 'Alarm > Alarm Input' configuration window. A red box highlights the top section containing the following fields:

Type	Local Alar		
AlarmIn	1	Enable	<input checked="" type="checkbox"/>
Type	Normal O		

Below the highlighted section, the following settings are visible:

Period	Set	MD Interval	1 Sec.
AlarmOut	1	OutDelay	10 Sec.
Record Channel	1 2 3 4 5 6 7 8 9 10 11 12 13 14 15 16		
Tour	1 2 3 4 5 6 7 8 9 10 11 12 13 14 15 16		
PTZ Activation	Set	PostRec	10 Sec.
Show Message	<input type="checkbox"/>	Send Email	<input type="checkbox"/>
Buzzer	<input type="checkbox"/>	Write Log	<input type="checkbox"/>
FTP upload	<input type="checkbox"/>	Mobile reported	<input type="checkbox"/>

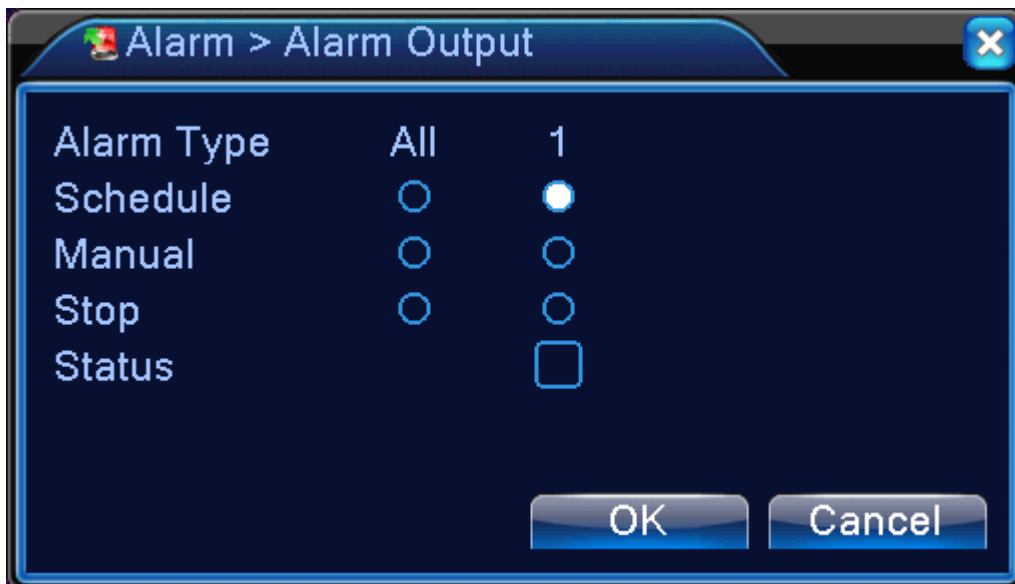
At the bottom, there are three buttons: 'Advanced', 'OK', and 'Cancel'.

Alarm input is the same between hybrid mode & full digital mode, function enable, when it was set normal, only need to connect alarm sensor at alarm input port on local side, the alarm information is occurring, and will link to related setting functions at the same time

Type : you can choose Local Alarm or IPC Alarm .

Type: you can choose Normal Open or Normal Close . it should be the same as external alarm device .

- Set alarm output in DVR



Please check current channel status: “○” means it is not in alarming status, “●” means it is in alarming status.

【Schedule】 Alarm is on according to the Schedule setting .

【Manual】 Click the all button and the according channel is alarming no matter the channel in any state.

【Stop】 Click the stop button and the according channel stops alarming no matter the channel in any state.