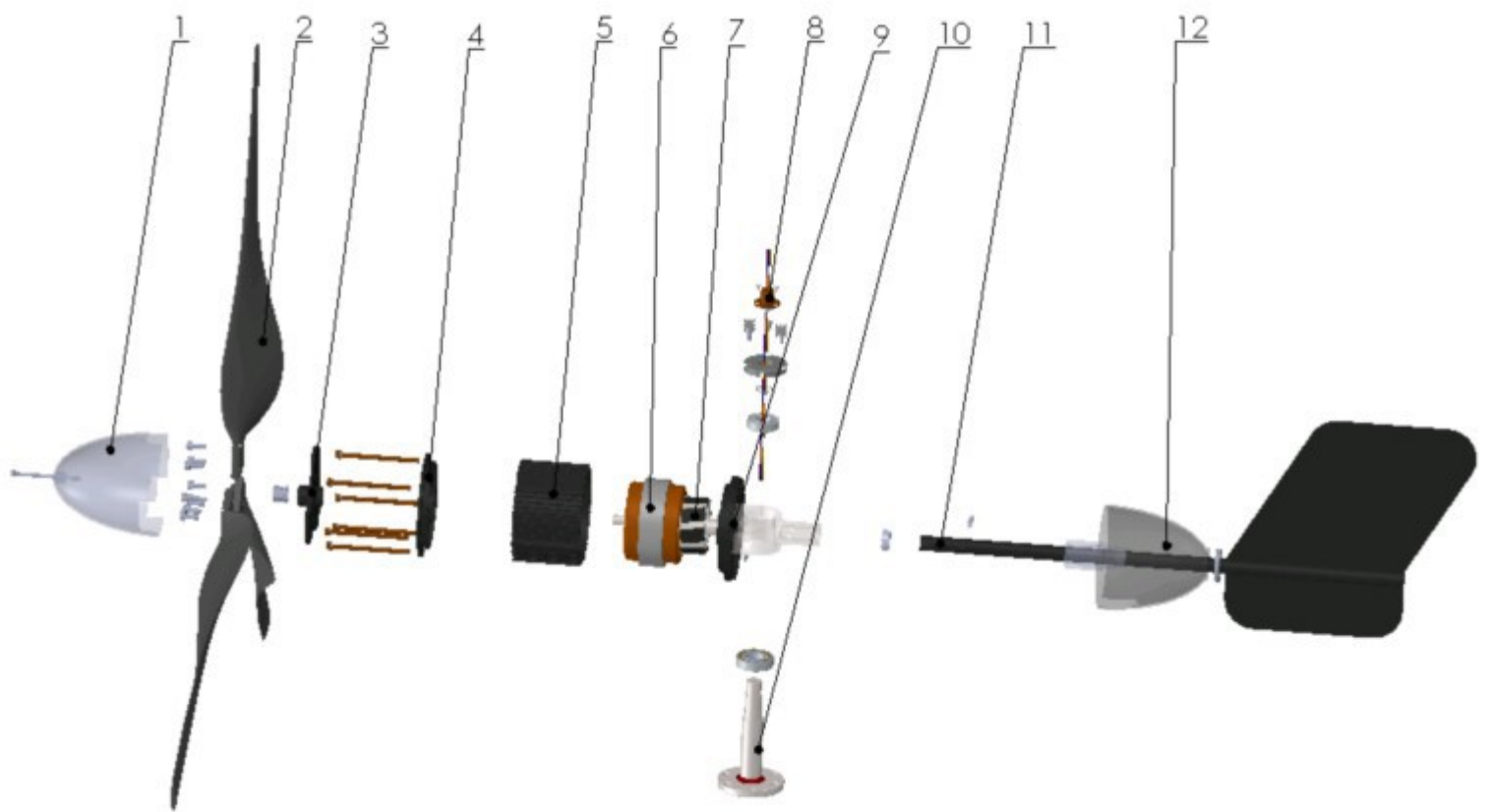


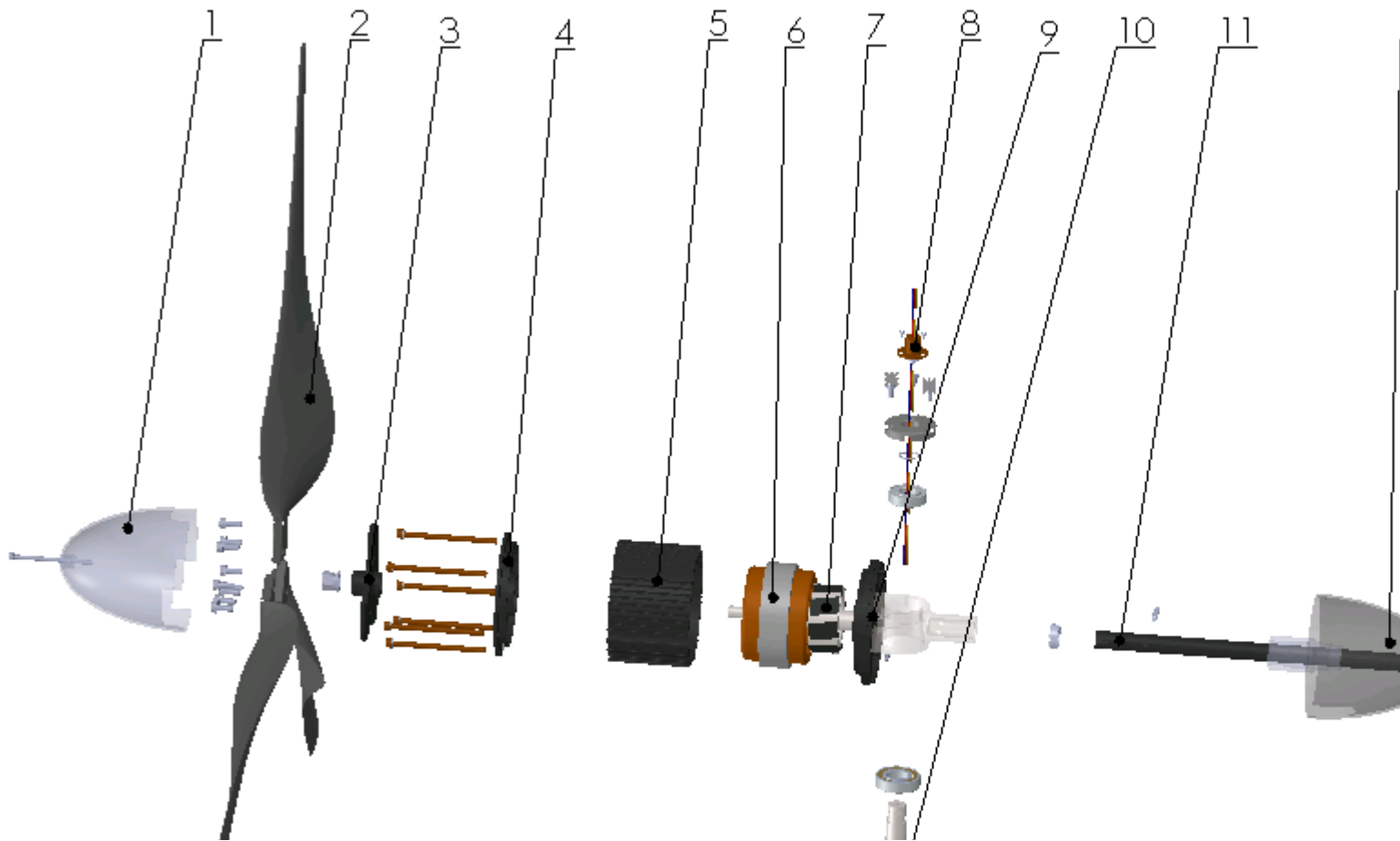
S user's manual

1. Technical Parameter

Model	S300	S400	S600	S1000
Rated power(W)	300	400	600	1000
Rated voltage(V)	12/24	12/24	24/48	24/48
Rated current (A)	25/12.5	33.3/16.7	25/12.5	41/20
Rotor diameter(m)	1.5	1.5	1.7	2.0
Start-up wind speed (m/s)	2.5	2.5	2.5	2.5
Rated wind speed(m/s)	9.6	9.6	10.5	13
Survival wind speed(m/s)	35	35	35	35
Working form	PMG	PMG	PMG	PMG
Rotating direction	Clockwise	Clockwise	Clockwise	Clockwise
Blade NO.(piece)	3	3	3	3
Blade material	Nylon	Nylon	Nylon	Nylon
Tower height (m)	6	6	6	6
Supporting inverter type	Single-phase sine wave	Single-phase sine wave	Single-phase sine wave	Single-phase sine wave
Net weight(KG)	20	20	25	28

2. Structure

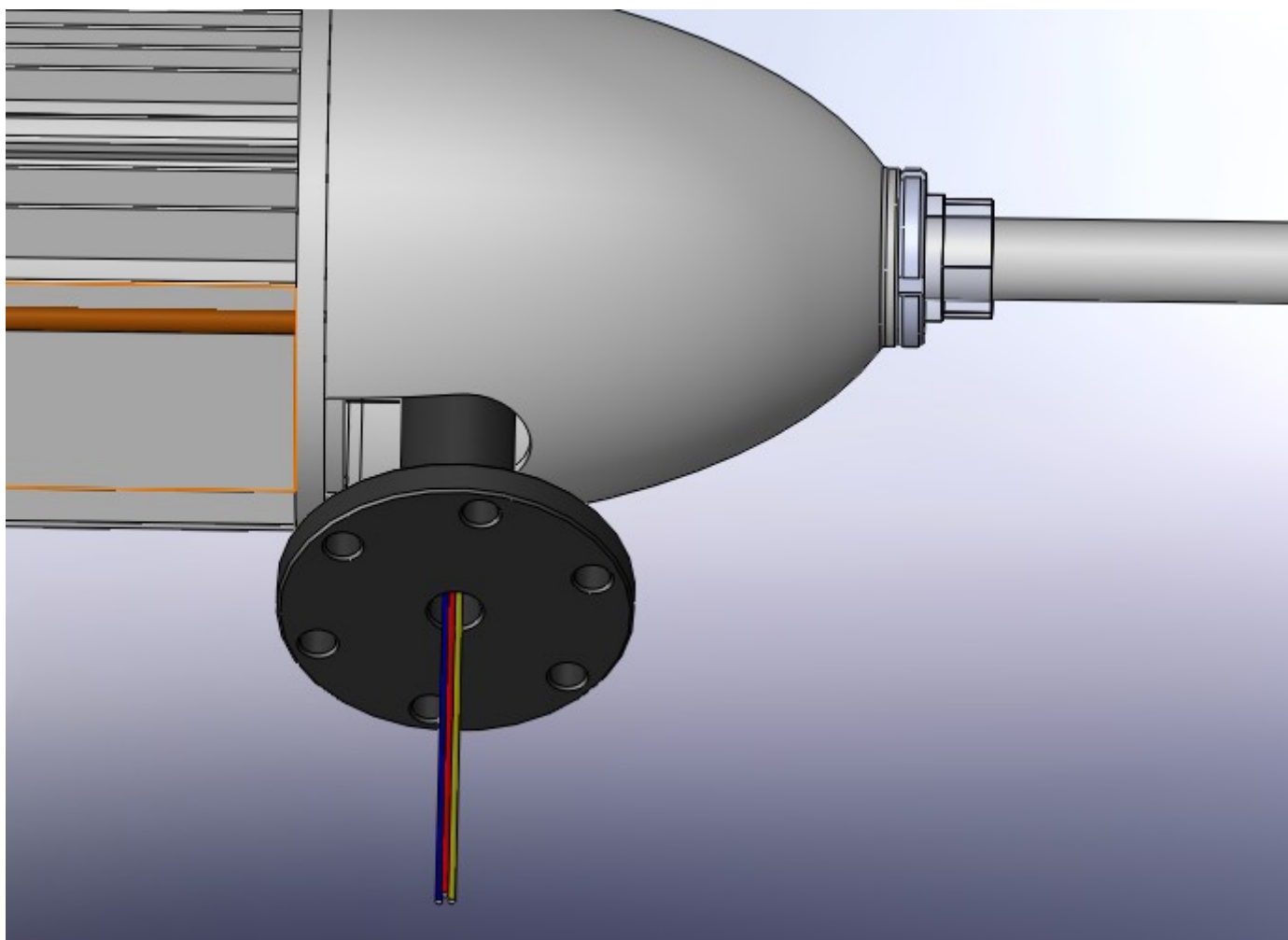




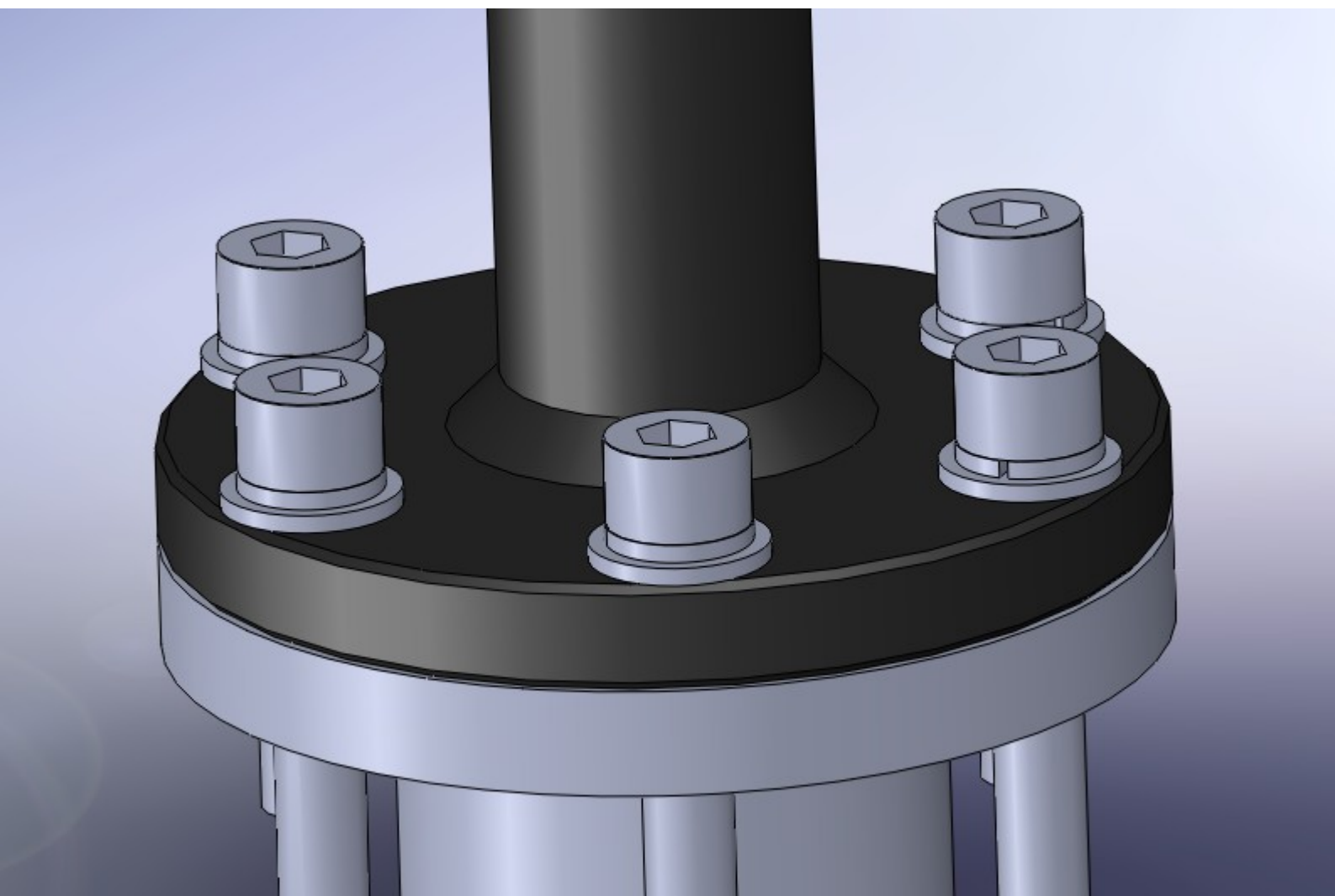
No.	Description	No.	Description
1	Nose cone	7	Rotor
2	Blades	8	Slip ring
3	Hub	9	Back cover
4	Front cover	10	Flange
5	Generator case	11	Tail vane
6	Stator	12	Back nose cone

3. Installation

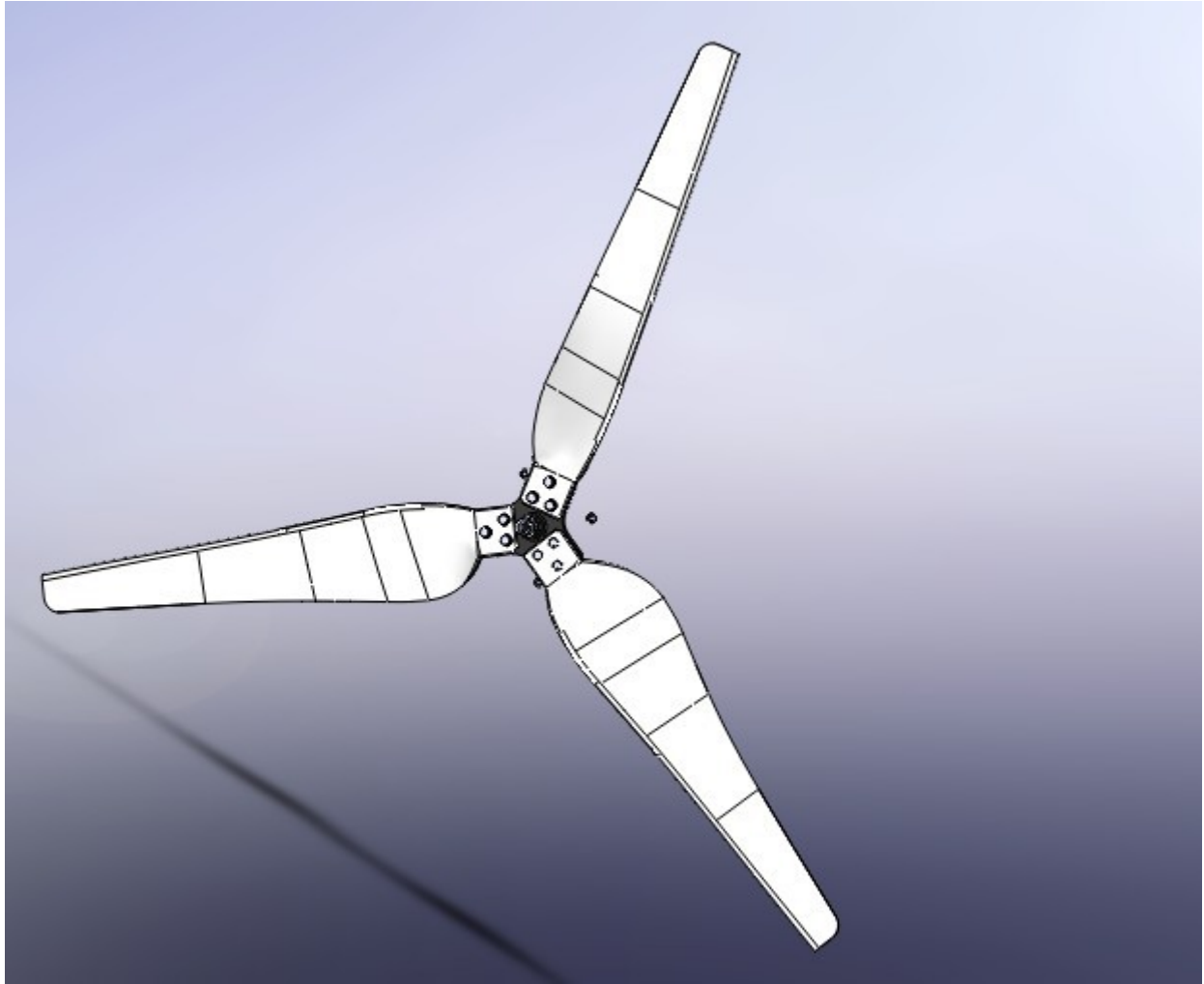
Connect the out going cables to the terminals at the bottom of the generator, and elicit the cable from outlet of the bottom of the tower.



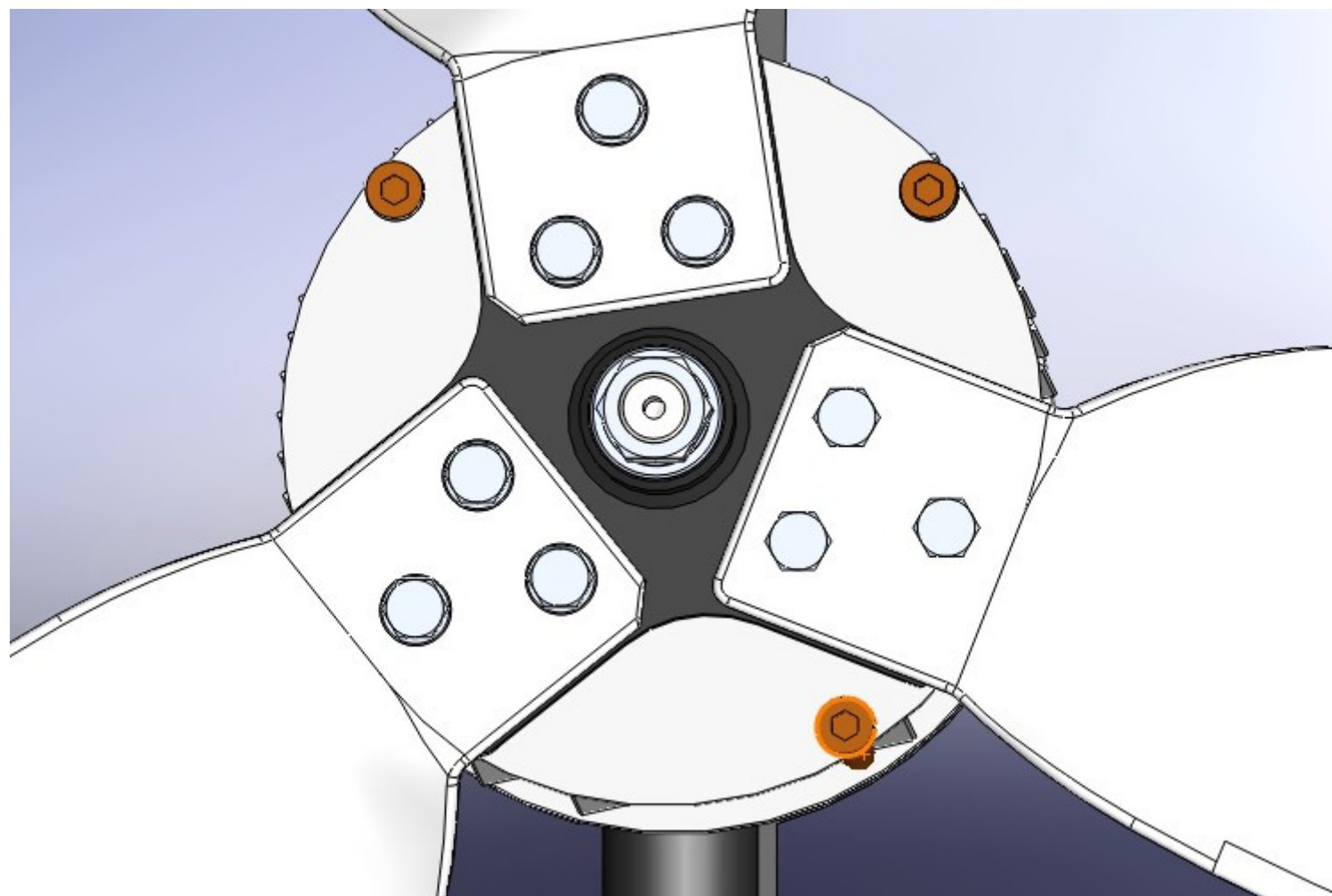
A) Install the flange on the top of the tower and make 6 pieces M10*55 bolts fasten.

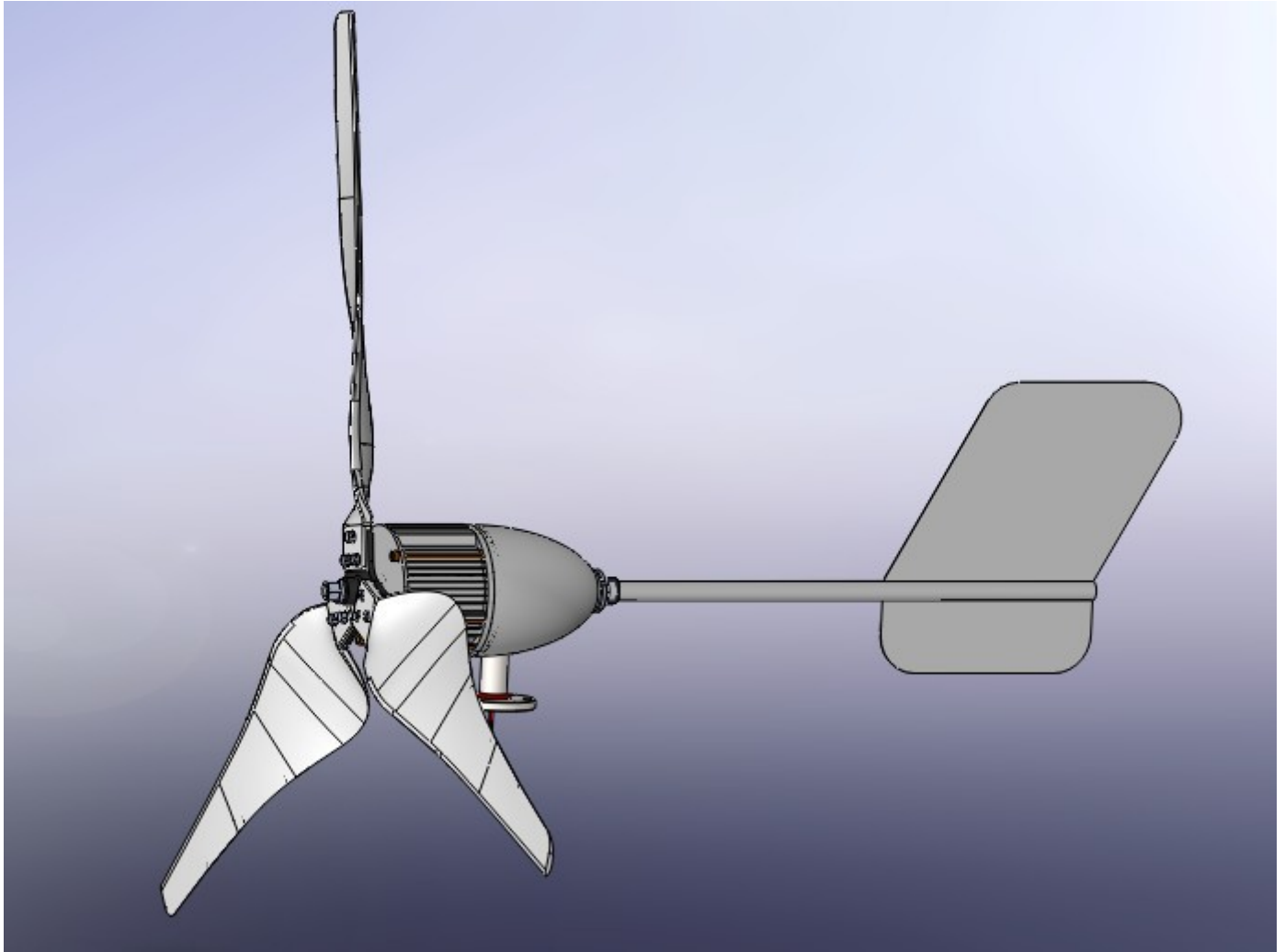


B) Install the blades on the hub and make 3 pieces M8*25 bolt fasten.

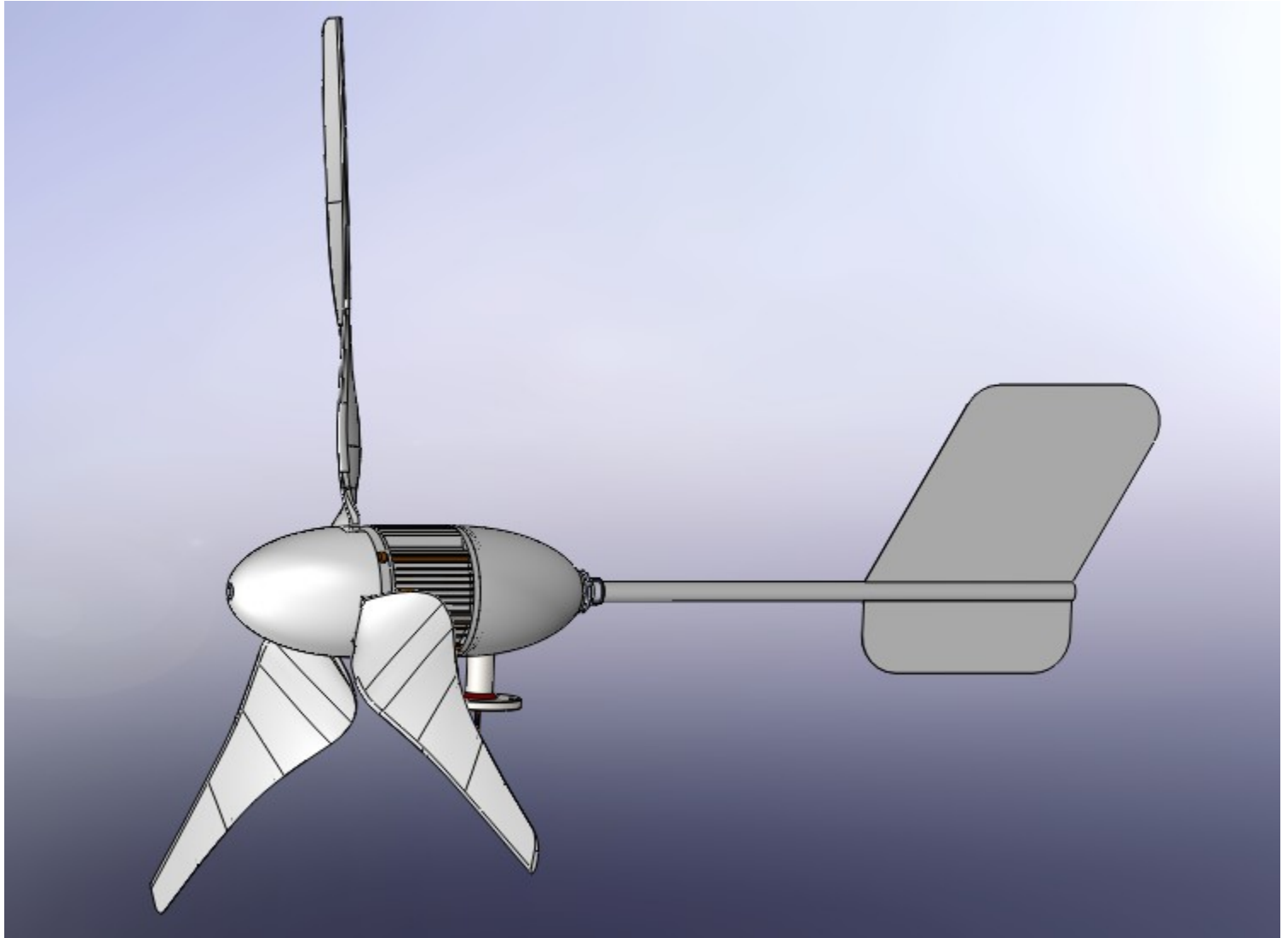


C) Put the hub onto the shaft and make M16 nut fasten, at the same time turn the blades clockwise till the hub connect the shaft tight.

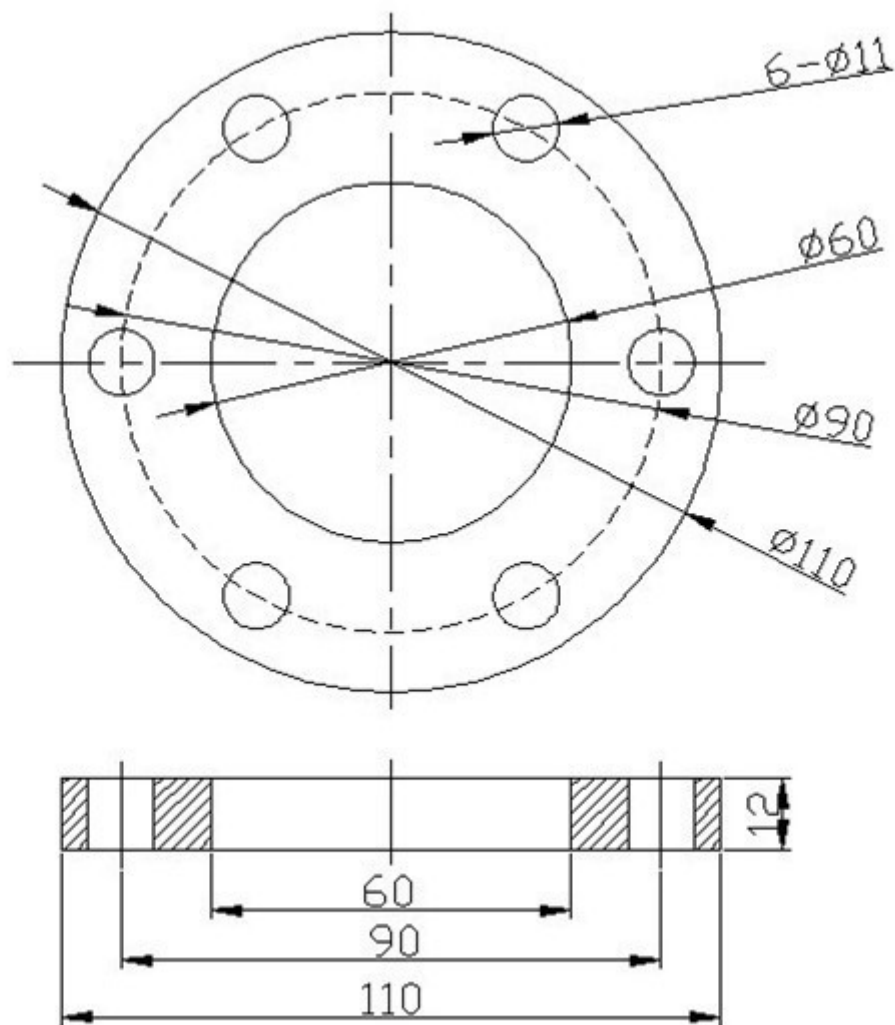




D) Install the nose cone on the front of the hub and make one piece M6*40 bolt fasten.



E) Connect the cable from the generator to the controller (Before make sure battery and controller cable connected well.)



F) Flange drawing.

Cautions



1. Thank you for
purchasing the EW series

wind turbine systems. Please read the manual carefully before
installation;

2. The installation should be done by the experienced technical person.

3. Keep the electrical part (controller/inverter battery) away from

corrosive gas and wet environment;

4. Controller should be connected with battery before it connected with wind turbine.

5. Do not open the generator and controller system doing the maintenance without notice or instructions;

6. Installation should be done under no wind weather.