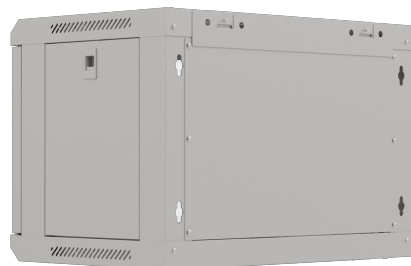




WF03-5306-10S

19" RACK CABINET 350MM



PRODUCT FEATURES:

- High strength: Loads up to 60 kg while maintaining a lightweight design,
- Versatility of installation: Cable openings in top and bottom panels, with blanking option,
- Mobility: M10 holes in bottom panel for mounting feet or casters,
- Effective ventilation: Ventilation holes and the possibility of mounting a 120x120 mm fan,
- Complete mounting kit: Four numbered mounting rails, M6 screws and ground wire,
- Flexible mounting: Mounted on the wall with a strip or directly through holes in the frame,
- Easy access from all sides: Glazed front door and side door and removable back panel.





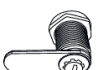
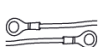

PRODUCT SPECIFICATION:

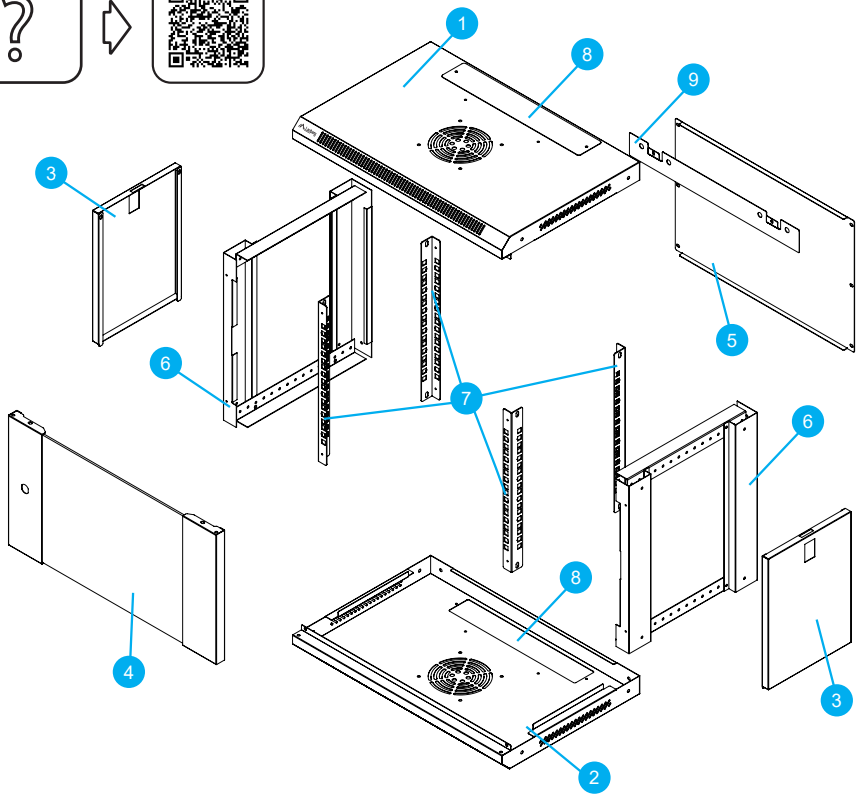
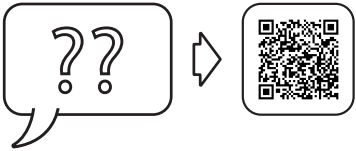
Type of cabinet	Wall mount
Size	19",
ICT height	6 U
Assembly type	Self-assembly
Working depth	305 mm
Front door type	Temper glass
Maximum front door opening angle	220 °
Maximum static load	60 kg
Slot amount for fans	2
Number of vertical rails	4
Colour	Gray
RAL color	RAL7035
Weatherproof rating	IP20
Upper & lower panel thickness	1 mm
Mounting rails thickness	1,5 mm
Frame thickness	1,2 mm
Other elements sheet thickness	1 mm
Depth	350 mm
Width	540 mm
Height	370 mm
Weight	11,3 kg
Standard	ANSI/EIA RS-310-D, DIN 41491/PART 1, DIN 41494/PART 7, ETSI, IEC297-2:1982
Grounding Details	Front door, Bottom panel
Included Accessories	User Manual, Grounding cable, M6 screws, Mounting bracket, Front lock

19" RACK CABINET

WF03-5304-10B, WF03-5304-10S, WF03-5306-10B, WF03-5306-10S, WF03-5309-10B, WF03-5309-10S

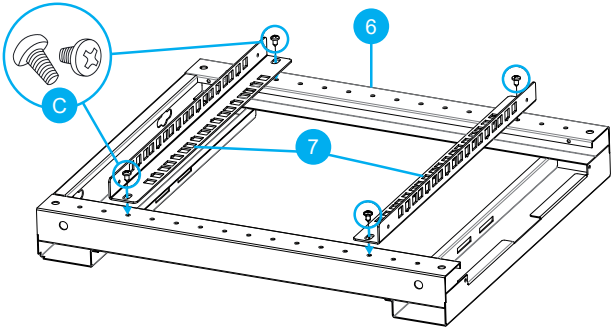


A		x8
B		x20
C		x8
D		x1
E		x1
F		x1
G		x12

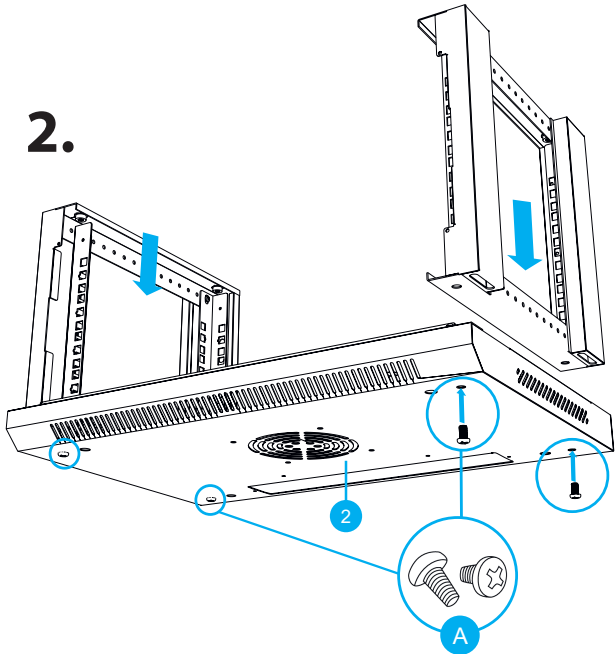


1.

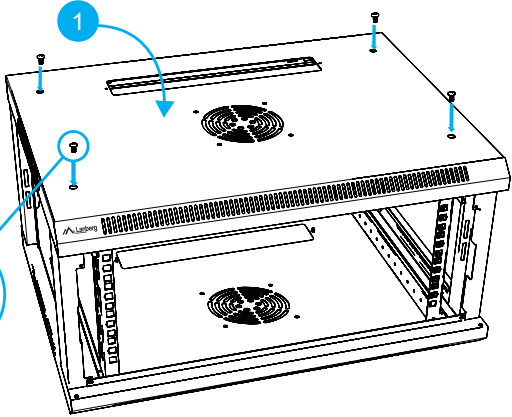
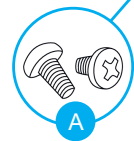
x2



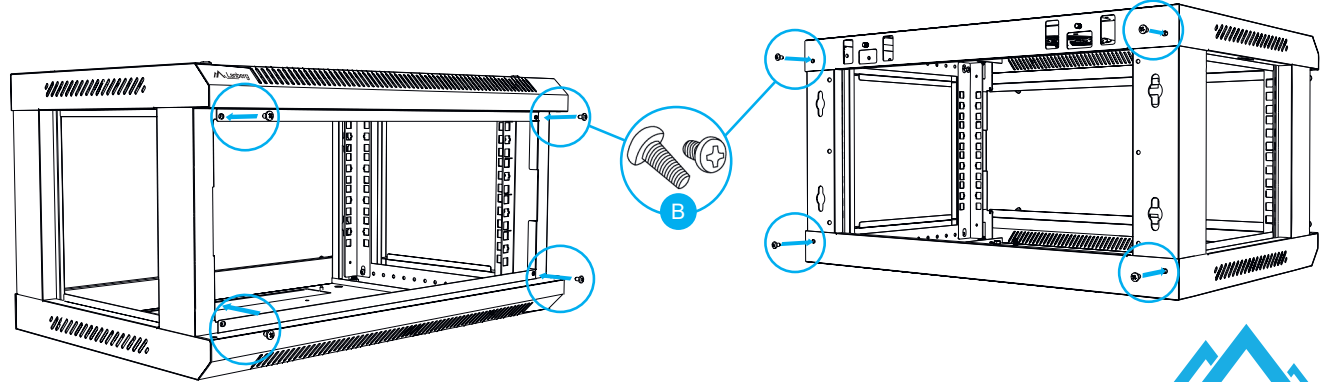
2.



3.

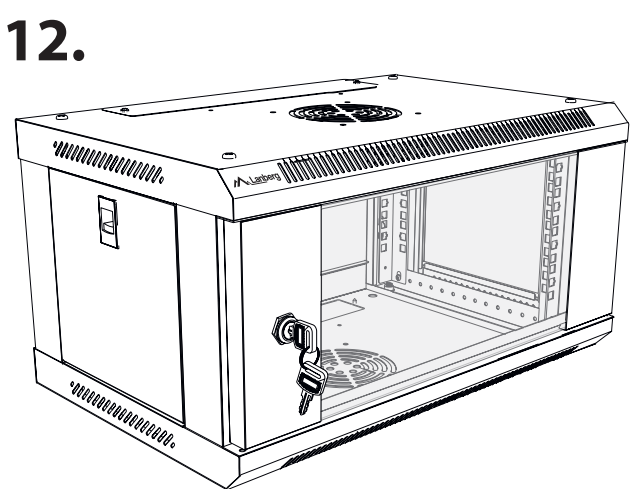
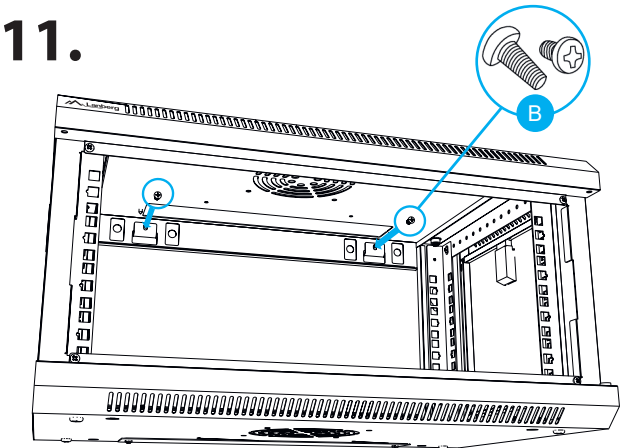
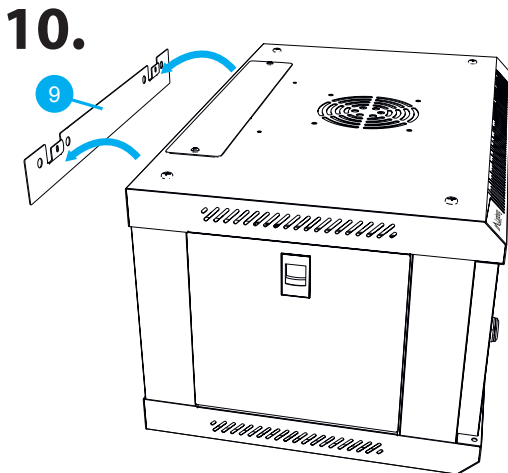
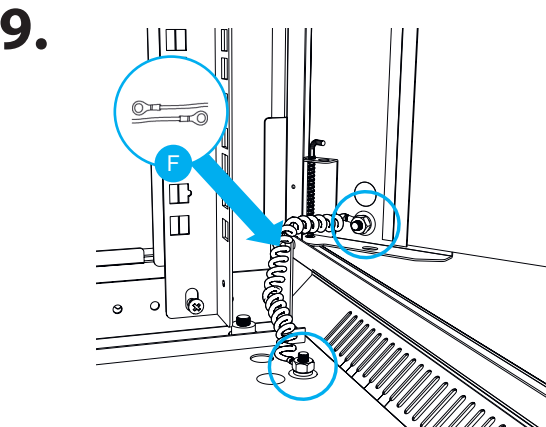
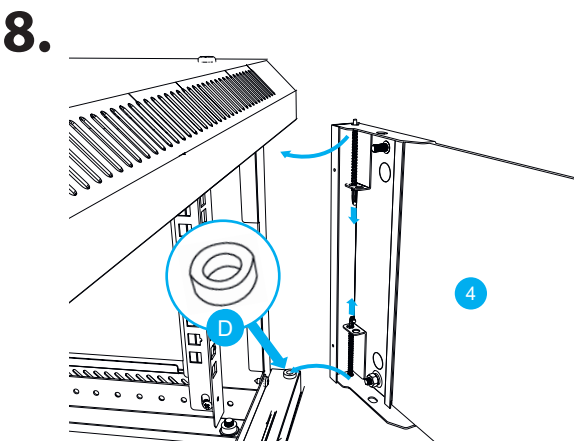
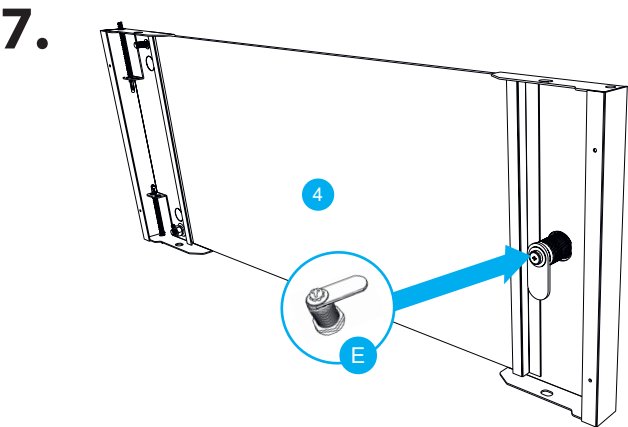
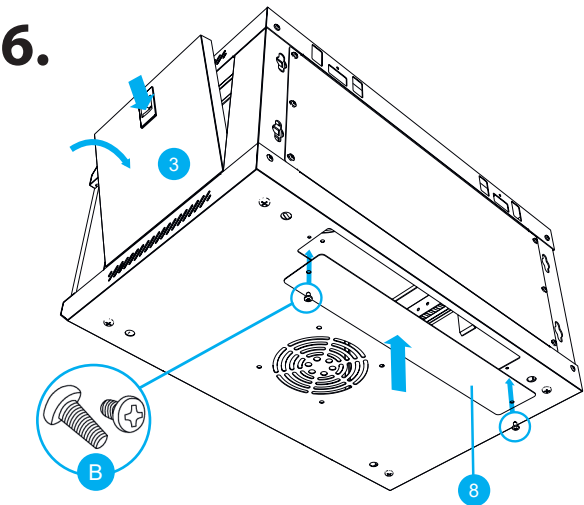
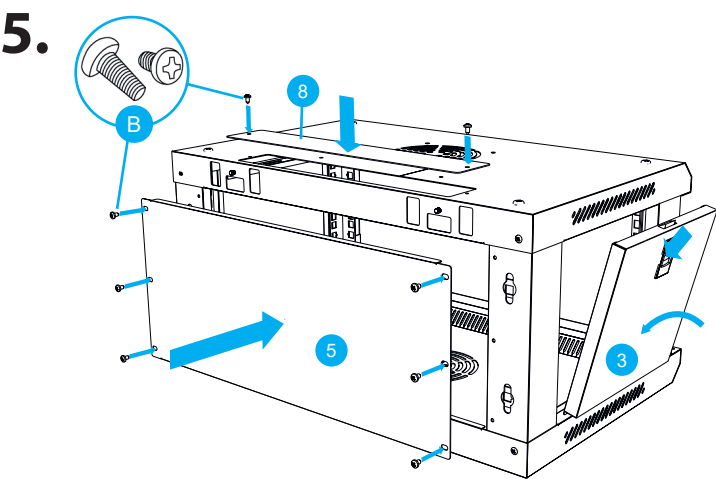


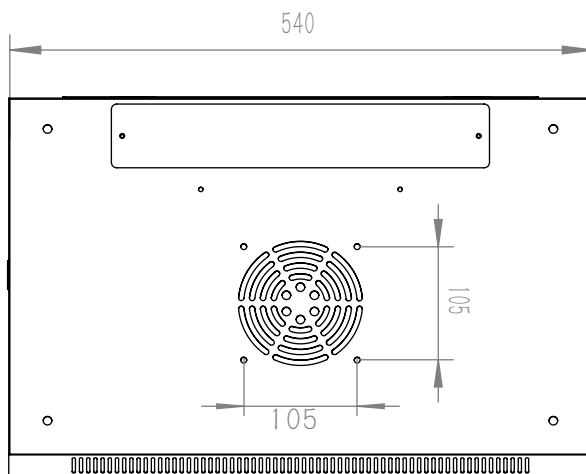
4.



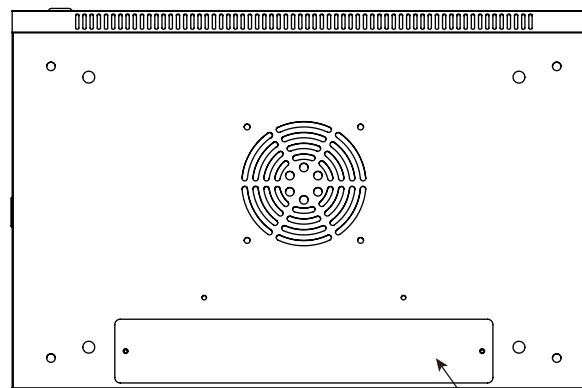
19" RACK CABINET

WF03-5304-10B, WF03-5304-10S, WF03-5306-10B, WF03-5306-10S, WF03-5309-10B, WF03-5309-10S



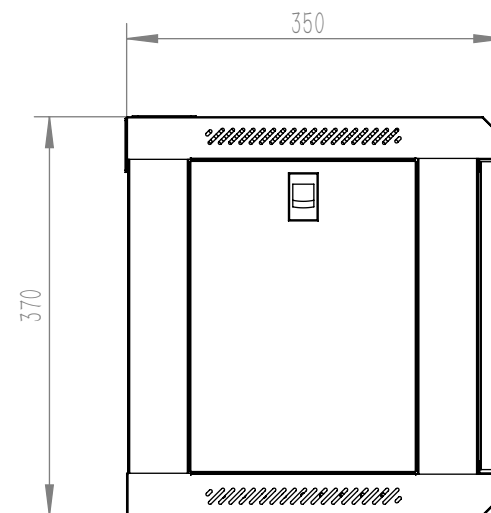


Top view

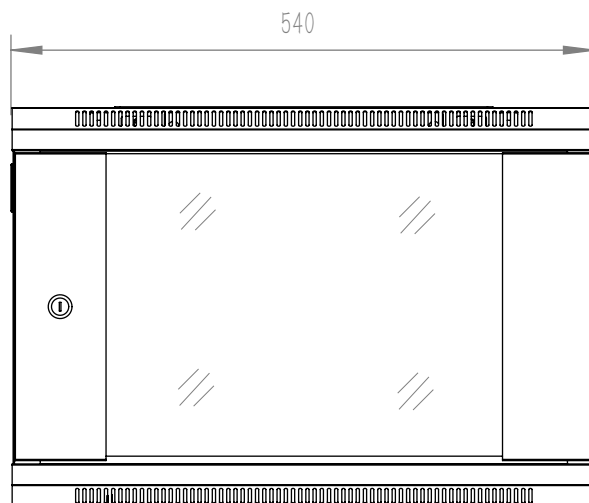


Bottom view

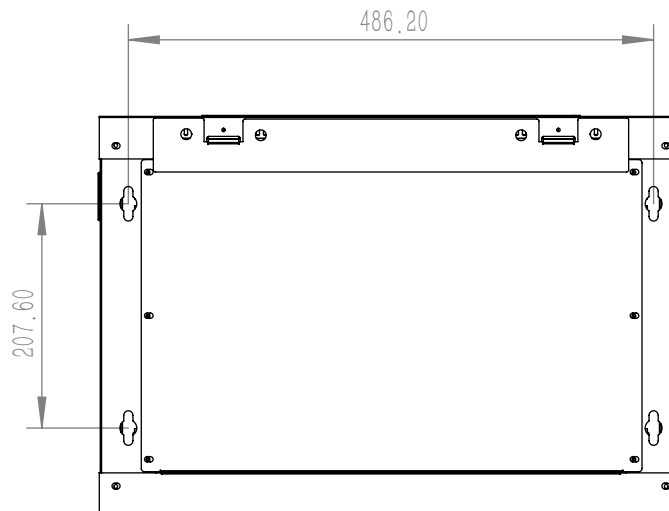
Cable entry



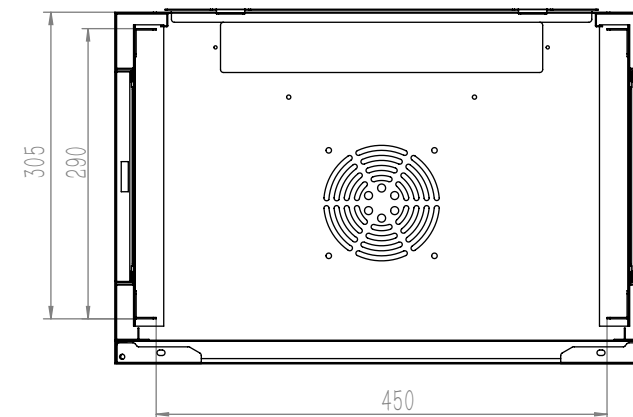
Side view



Front view



Back view



Maximum Working depth:
 "U" Rail - "U"Rail : 290mm
 "U" Rail - Rear door: 305mm

Cabinet dimensions: 540x350x370mm (6u)