

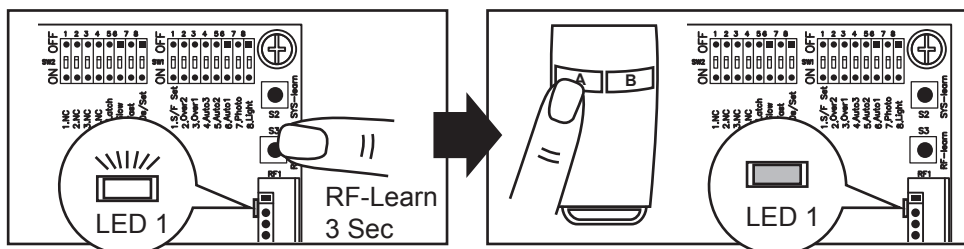
PC200 Control Panel Programming Guide

1. Check motors and accessories connection and Set control board.

Make sure Motor 1, Motor 2, and accessories connect to control board correctly. Turn on the power and then set parameter of control board.

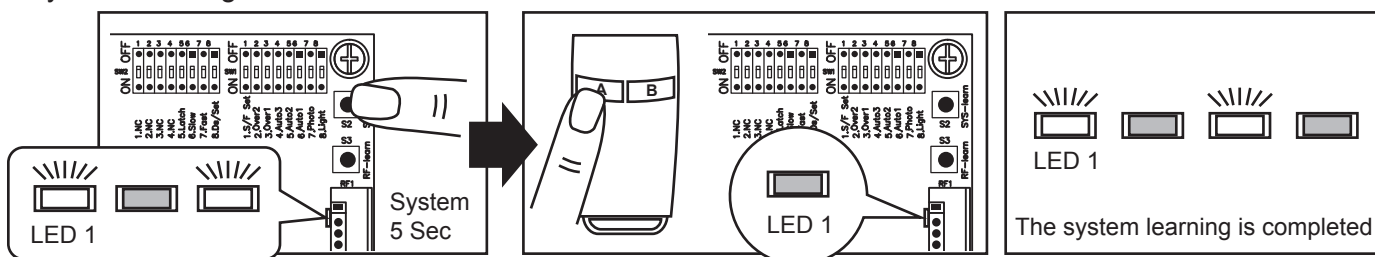
2. Transmitter Learning

Press and hold the S3 button on PCB for 1 second and then RF LED will be "on". Press A button for dual-gate installation; press B button for single-gate installation on the transmitter within 9 seconds. The transmitter learning is completed when RF LED is "OFF".



3. The operation of gate learning:

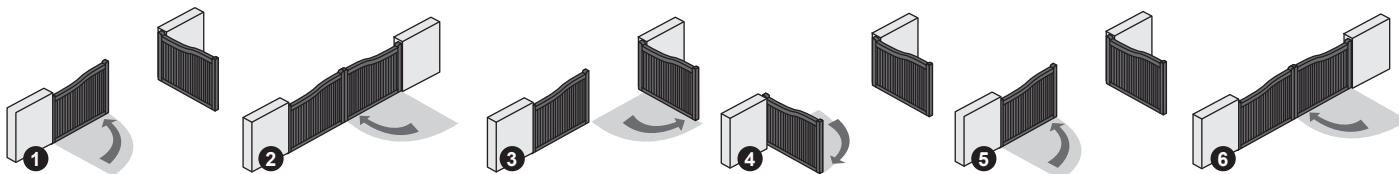
Press and hold S2 button on the PCB for 5 seconds. After LED1 System learning LED blinks slowly per second, press the button on the transmitter to choose dual-gate (A button) or single-gate (B button) system learning.



In Dual-Gate system learning mode, the gate will proceed with the following procedures.

- ① Slave Gate closes → ② Master Gate closes → ③ Master Gate opens → ④ Slave Gate opens → ⑤ Slave Gate closes → ⑥ Master Gate closes.

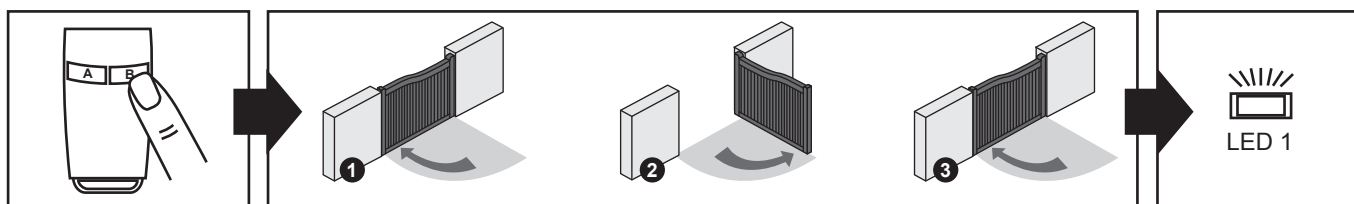
The system learning is completed when LED1 quickly blinks twice per second.



In Single-Gate system learning mode, the gate will proceed with the following procedures.

- ① Master Gate closes → ② Master Gate opens → ③ Master Gate closes.

The system learning is completed when LED1 quickly blinks once per second.



4. Operation

Press the button "A" on the transmitter for dual-gate operation.

Press the button "B" on the transmitter for single-gate operation in either single-gate or dual-gate installation. Using the Key selector switch, push button device or the radio transmitter, test the opening, closing, and stopping of the gate and make sure that the gate is in the intended direction.