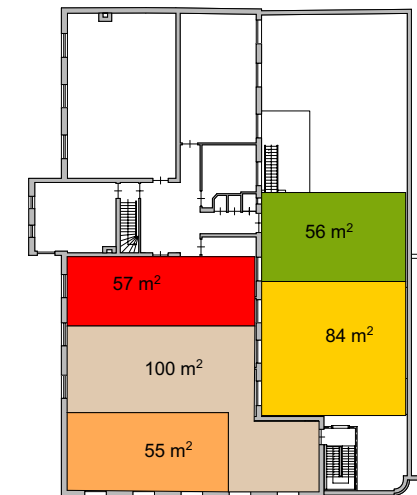
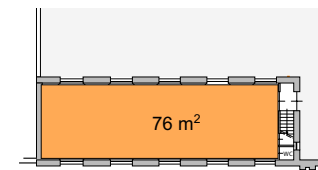
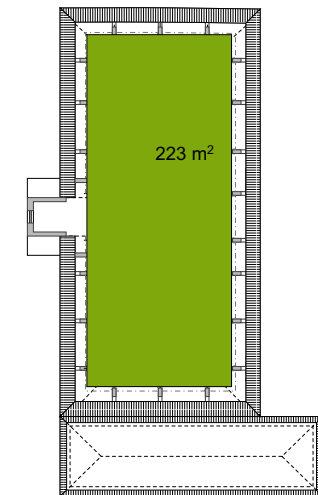


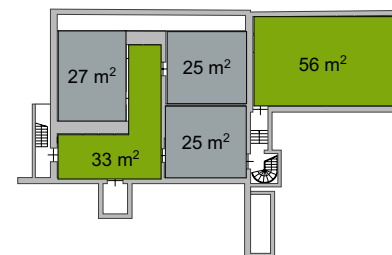
begane grond



1e + 2e verdieping



2E VERDIEPING



kelder

### legenda

- concertzaal: 326 m2
- facilitaire ruimten: 607 m2
- horeca: 200 m2
- foyer: 283 m2
- oefenruimten: 77 m2
- kantoren: 131 m2
- multizaal: 84 m2

programma Burgerweeshuis variant 2 op locatie Bagijnenstraat