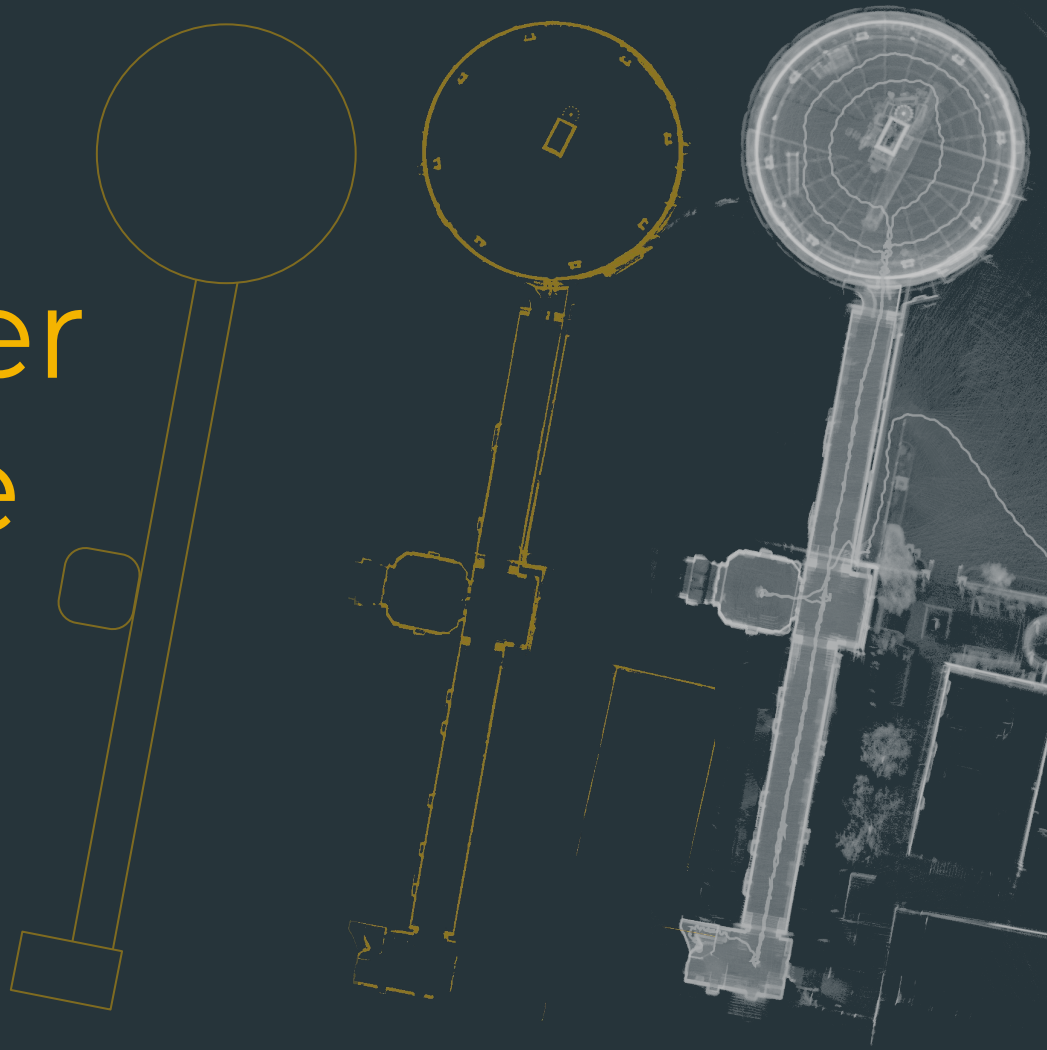


# 29th Cartographer Open House

17.01.2019



# OS support

Cartographer now builds on Windows. Azure CI integration done. Some fixes for Mac OS build.

## Cartographer

- Windows build fixes & Azure CI (#1463)

## Cartographer ROS

- Windows build & Azure CI (#1103)
- fixing compilation under OSX (#1126)



# Tweaks and fixes

## Cartographer

- Fix TSD converter include location (#1500)
- Implement PixelDataMatrix. (#1494)
- Small fixes for PoseExtrapolator::UpdateVelocitiesFromPoses() (#1492)
- Fix regression in Protobuf find\_package logic. (#1491)
- Use efficient string concatenation (#1488)
- Upgrade all dependencies to new Starlark syntax. (#1483)
- Configurable miss\_per\_hit\_limit in outlier removing processor. (#1476)

## Cartographer ROS

- Don't run final optimization in visualize\_pbstream.launch (#1157)
- Configurable frame IDs in trajectory\_comparison\_main.cc (#1120)



# RFCs

## Save user data in proto stream

Teach libcartographer to store additional user data from clients in the proto stream

### Discussion Points

- Is the proposed API adequate?
- Use a ROS message or a proto for serializing NodeOptions?



Thanks.

Next Open House:  
**February 14th, 5pm CEST**

If you would like to present anything next meeting, please  
reach out to [cschuet@google.com](mailto:cschuet@google.com)

