

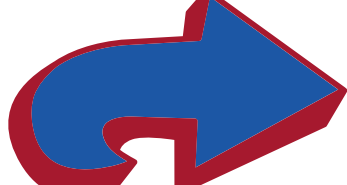
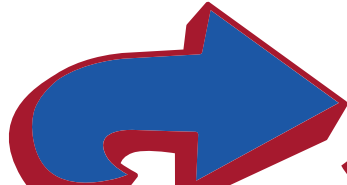
JOE E. WHITE LIBRARY



RESOURCE GUIDE

carlalbert.edu/library/

Or find us on the Carl Albert Website

 Academics  Joe E. White Library

**ON THE JOE E. WHITE LIBRARY PAGE,
SCROLL UNTIL YOU SEE THIS.**



**CLICK ON
DATABASES**

**Click on
EBSCOHost**

Library Databases

- Chronicle of Higher Education
- **EBSCOhost**
- eLibrary
- Encyclopedia Britannica
- Health Reference Center

- Issues & Controversies in HISTORY
- HISTORY: Great Lives & Great Events
- Facts on File: Issues & Controversies
- JSTOR
- Today's Science

- Writer's Reference Center
- Gale in Context: Opposing Viewpoints
- Gale in Context: College
- World Geography and Culture Online
- World Religions

**IF YOU ARE NOT ON CAMPUS, YOU WILL NEED TO LOG
IN AS A REMOTE USER. USE YOUR MYCARLALBERT OR
CARL ALBERT EMAIL CREDENTIALS.**

Joe E White Library
Carl Albert State College

CASC Remote User Authentication

Username

Password

Login

Select Resource

CARL ALBERT STATE COLLEGE - POTEAU

**SELECT EBSCOHOST
RESEARCH DATABASES.**



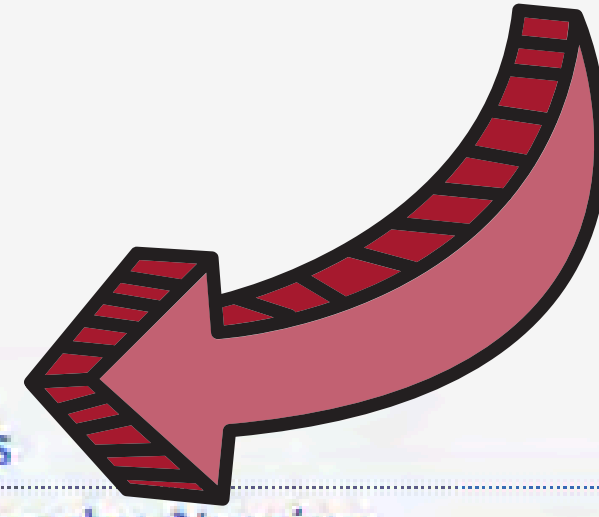
EBSCOhost Research Databases

Health Majors - Athletic Training, PTA, Radiography, Nursing

Business Majors

Education Majors

eBook Collection (EBSCOhost) (nlebk)



**THE EBSCOHOST USER INTERFACE FEATURES
PERSONALIZED DASHBOARDS, MODERN RESULT
LISTS, ENHANCED DISPLAYS, GREATER CITING AND
SHARING OPTIONS, AND ENHANCED DETAILED
RECORD AND VIEWER EXPERIENCES.**

Demonstration Customer

MyEBSCO

EBSCOhost

My dashboard

- Projects
- Saved
- Recent activity
- Holds & checkouts
- Alerts

Research tools

- New search
- Publications

Search articles, books, journals & more

Searching: Academic Search Ultimate

Advanced search

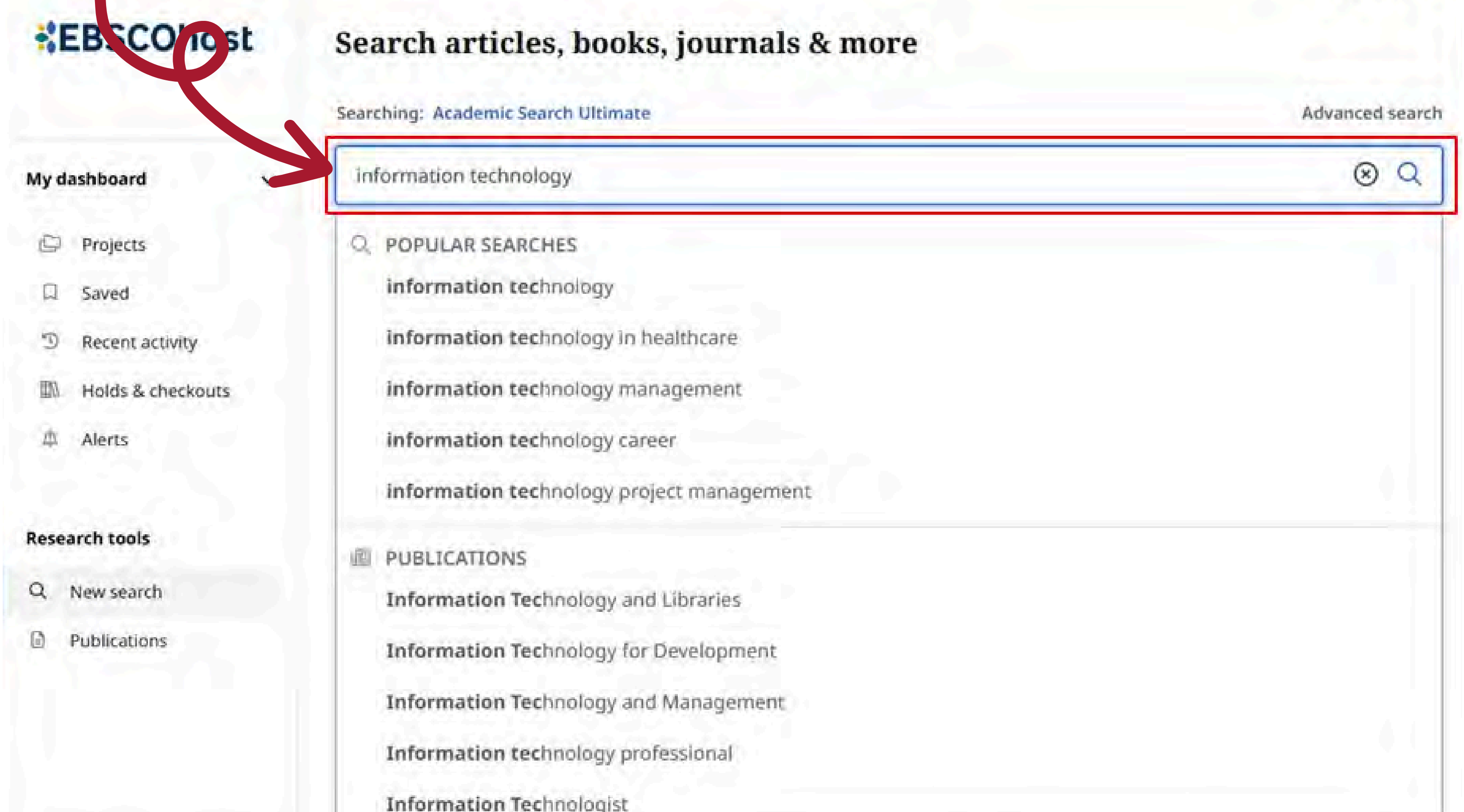
Search articles, books, journals & more

Online Full Text Peer Reviewed All time

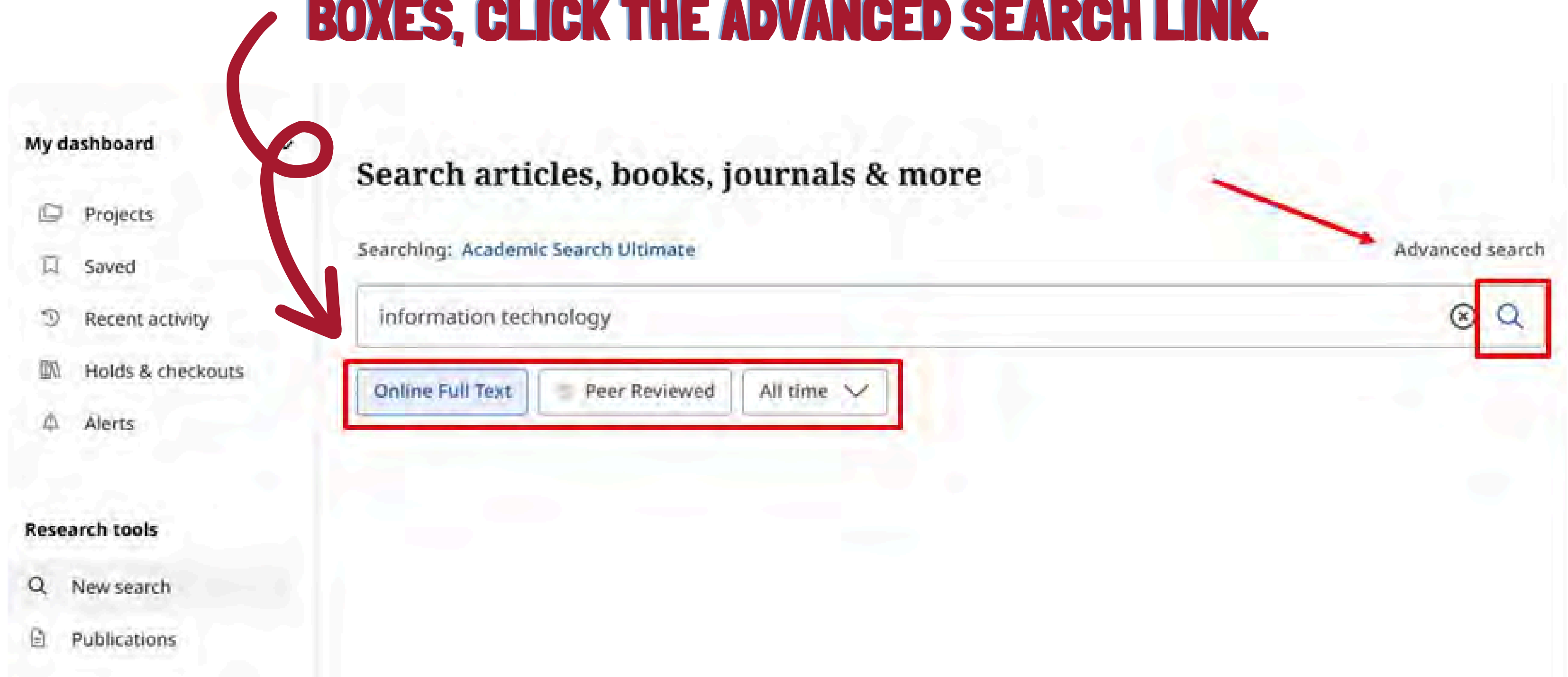
Privacy policy | Terms of use | Institutional logout | Manage my cookies

© 2024 EBSCO Information Services, LLC. All rights reserved

BEGIN BY ENTERING YOUR SEARCH TERMS IN THE SEARCH BOX. AS YOU TYPE, THE AUTO-COMPLETE FEATURE APPEARS WITH POPULAR SEARCH TERMS THAT YOU CAN CLICK TO EXECUTE A SEARCH.



OR, YOU CAN APPLY ANY OF THE LIMITERS BELOW THE SEARCH BOX AND CLICK THE MAGNIFYING GLASS TO RUN YOUR SEARCH. IF YOU WOULD PREFER TO USE THE ADVANCED SEARCH WITH GUIDED-STYLE SEARCH BOXES, CLICK THE ADVANCED SEARCH LINK.



THE GUIDED STYLE SEARCH BOXES ALLOW YOU TO GUIDE YOUR SEARCH USING DIFFERENT TERMS, SUCH AS SUBJECT, AUTHOR, AND TITLE. IF YOU NEED MORE THAN THREE SEARCH BOXES FOR YOUR TERMS, YOU CAN CLICK THE ADD FIELDS BUTTON TO ADD MORE. APPLY LIMITERS FROM THE SEARCH OPTIONS AREA AND CLICK SEARCH.

The screenshot shows the EBSCOhost search interface. On the left is a sidebar with 'My dashboard' (Projects, Saved, Recent activity, Holds & checkouts, Alerts) and 'Research tools' (New search, Publications). The main area is titled 'Search articles, books, journals & more' and shows 'Searching: Academic Search Ultimate'. There are three search boxes: 'information technology', 'software engineering', and an empty one. Between the first two is an 'AND' dropdown. Below the boxes is an 'Add fields' button. To the right is a 'Basic search' dropdown menu with options: 'Subject Terms - SU', 'All Text - TX' (selected), 'All fields', 'All Text - TX', 'Author - AU', 'Title - TI', 'Subject Terms - SU', and 'Abstract or Author-Supplied'. Below the search boxes is a 'Filters' tab, which is highlighted. A red box around the 'Filters' tab contains the following options: 'Limit your results (1)', 'Online Full Text' (checked), 'References Available', 'Peer Reviewed', and 'First Author is Nurse'. A red arrow points from the 'All filters (1)' button to the 'Filters' tab. Another red arrow points from the 'Add fields' button to the 'Filters' tab. A third red arrow points from the 'All Text - TX' option in the dropdown menu to the 'Filters' tab.

ALWAYS SELECT FULL TEXT.
SOMETIMES, THE SEARCH RESULTS WILL ONLY GIVE AN ABSTRACT (SHORT SUMMARY) OF THE ARTICLE WHICH CANNOT BE USED FOR RESEARCH.

YOU CAN REFINE YOUR SEARCH RESULTS BY APPLYING FILTERS. CLICK THE ALL FILTERS BUTTON BELOW THE SEARCH BOX TO DISPLAY THEM.

The screenshot shows the EBSCOhost search results page. The top bar shows 'EBSCOhost' and the search query 'SU information technology AND TX software engineering'. Below the search bar is a row of buttons: 'All filters (1)', 'Online Full Text', 'Peer Reviewed', 'All time', and 'Source type'. To the right of these buttons is an 'Advanced search' button. Below the buttons is a 'Results: 1,735' button. To the right of this button are 'Show: 10', 'Relevance', and a 'Show more' button. The first search result is a 'Peer reviewed | Academic Journal' titled 'Approaches for Hybrid Scaling of Agile in the IT Industry: A Systematic Literature Review and Research Agenda'. The author is 'Almeida, Fernando; Bálint, Blaskovics' and it is from 'Information (2078-2489), Oct2024 • Academic Search Ultimate'. The abstract states: 'Agile methodologies, initially designed for the project level, face challenges when applied at enterprise levels where complex projects and diverse stakeholders are involved. To meet this challen... Show more'. The subjects are 'AGILE software development; PROJECT management software; INFORMATION technology in dustry; SOFTWARE engineering; +1 more'. There is an 'Access options' button at the bottom of the result.

CLICK THE ARROWS TO OPEN FACETS AND DISPLAY THE AVAILABLE FILTERS. WHEN YOU ARE FINISHED MAKING SELECTIONS, CLICK THE APPLY BUTTON TO UPDATE YOUR RESULTS.

Demonstration Customer

Searching: Academic Search Ultimate

SU information technology AND TX software engineering

All filters (1) Online Full Text Peer Reviewed All time Source type

My dashboard

Projects

Saved

Recent activity

Holds & checkouts

Alerts

Research tools

New search

Publications

Results: 1,735

Peer reviewed | Academic journal

Agile methodologies, initially designed for the project level, face challenges when applied at enterprise levels where complex projects and diverse stakeholders are involved. To meet this challenge, s... Show more

Subjects: AGILE software development; PROJECT management software; INFORMATION technology industry; SOFTWARE engineering; +1 more

Access options

All filters

Search Mode: Proximity

Active filters

Online Full Text X Past 12 months X

Expanders

Apply equivalent subjects X

Advanced search

☒ Online Full Text

☐ References Available

☐ Peer Reviewed

☐ First Author is Nurse

Publication Date (1)

☐ All time

☒ Past 12 months

☐ Past 5 years

☐ Past 10 years

Clear All

Apply

ALWAYS SELECT FULL TEXT.
SOMETIMES, THE SEARCH RESULTS WILL ONLY GIVE AN ABSTRACT (SHORT SUMMARY) OF THE ARTICLE WHICH CANNOT BE USED FOR RESEARCH.

UPDATE YOUR PUBLICATION DATE.
MOST RESEARCH ASSIGNMENTS ONLY WANT CURRENT INFORMATION, TYPICALLY WITHIN THE LAST 5 YEARS.

THE NUMBER OF APPLIED FILTERS IS UPDATED ON THE ALL FILTERS BUTTON.

EBSCOhost

SU information technology AND TX software engineering

All filters (2) Online Full Text Peer Reviewed Past 12 months Source type Advanced search

My dashboard

Projects

Saved

Recent activity

Holds & checkouts

Alerts

Research tools


New search

Publications

Results: 79

Show: 10 Relevance

Peer reviewed | Academic journal



Approaches for Hybrid Scaling of Agile in the IT Industry: A Systematic Literature Review and Research Agenda.

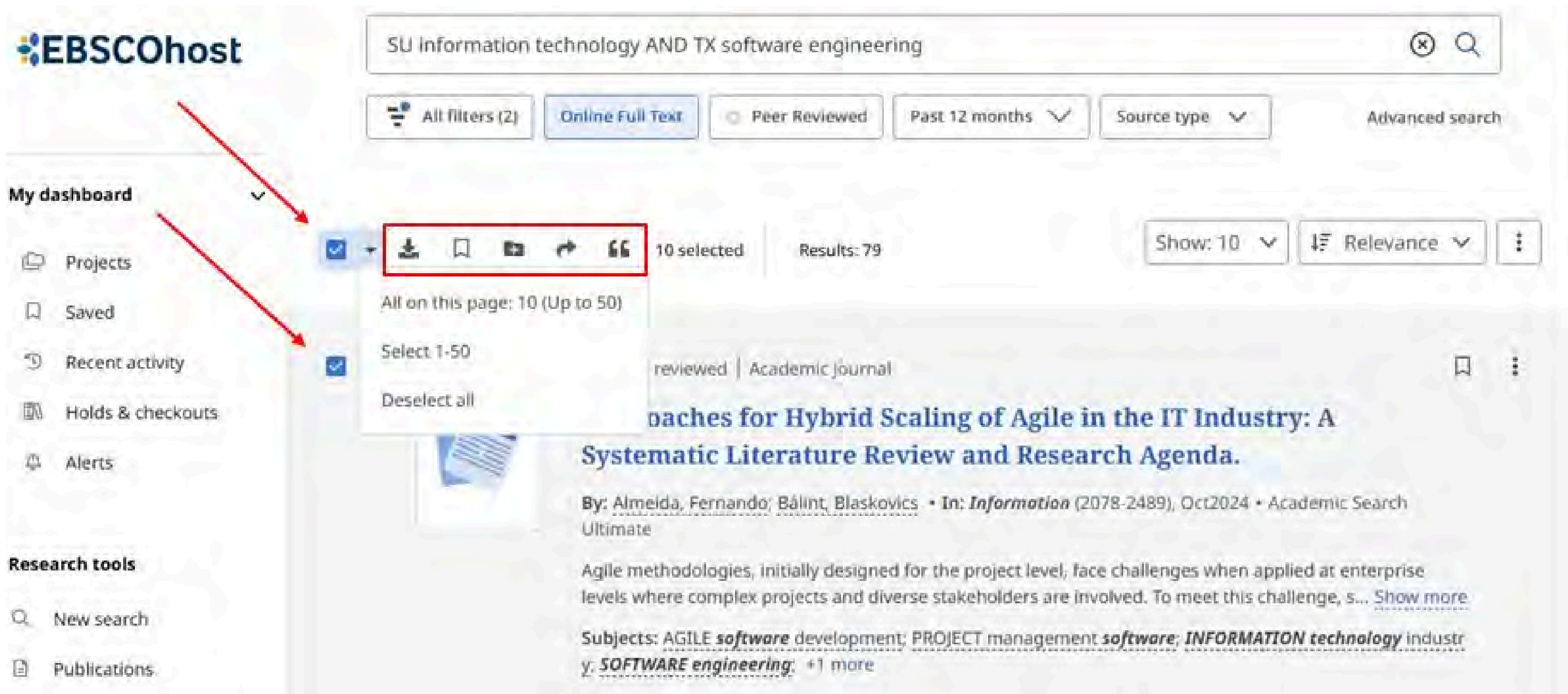
By: Almeida, Fernando; Bálint, Blaskovics • In: *Information* (2078-2489), Oct2024 • Academic Search Ultimate

Agile methodologies, initially designed for the project level, face challenges when applied at enterprise levels where complex projects and diverse stakeholders are involved. To meet this challenge, s... Show more

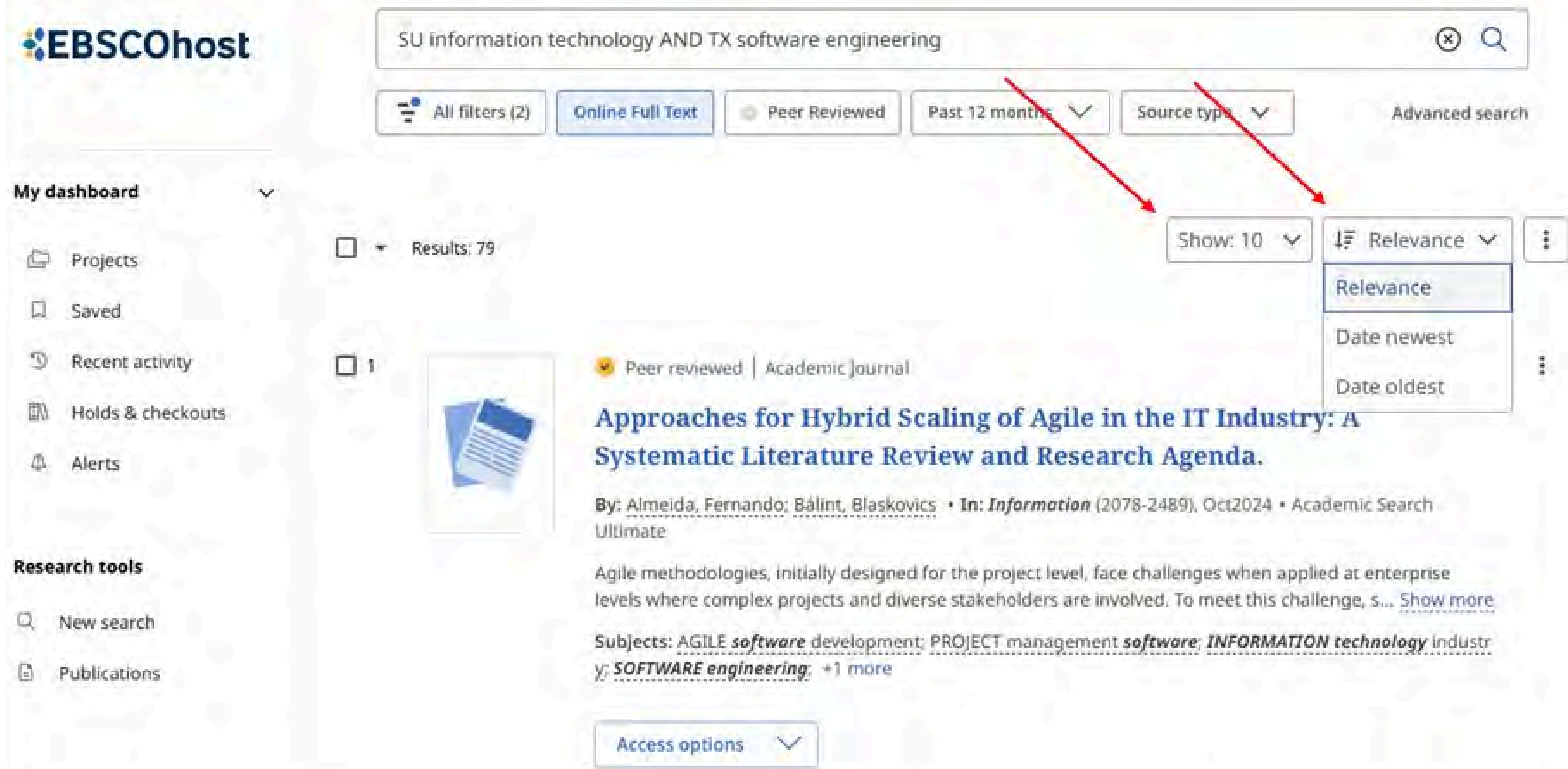
Subjects: AGILE software development; PROJECT management software; INFORMATION technology industry; SOFTWARE engineering; +1 more

Access options

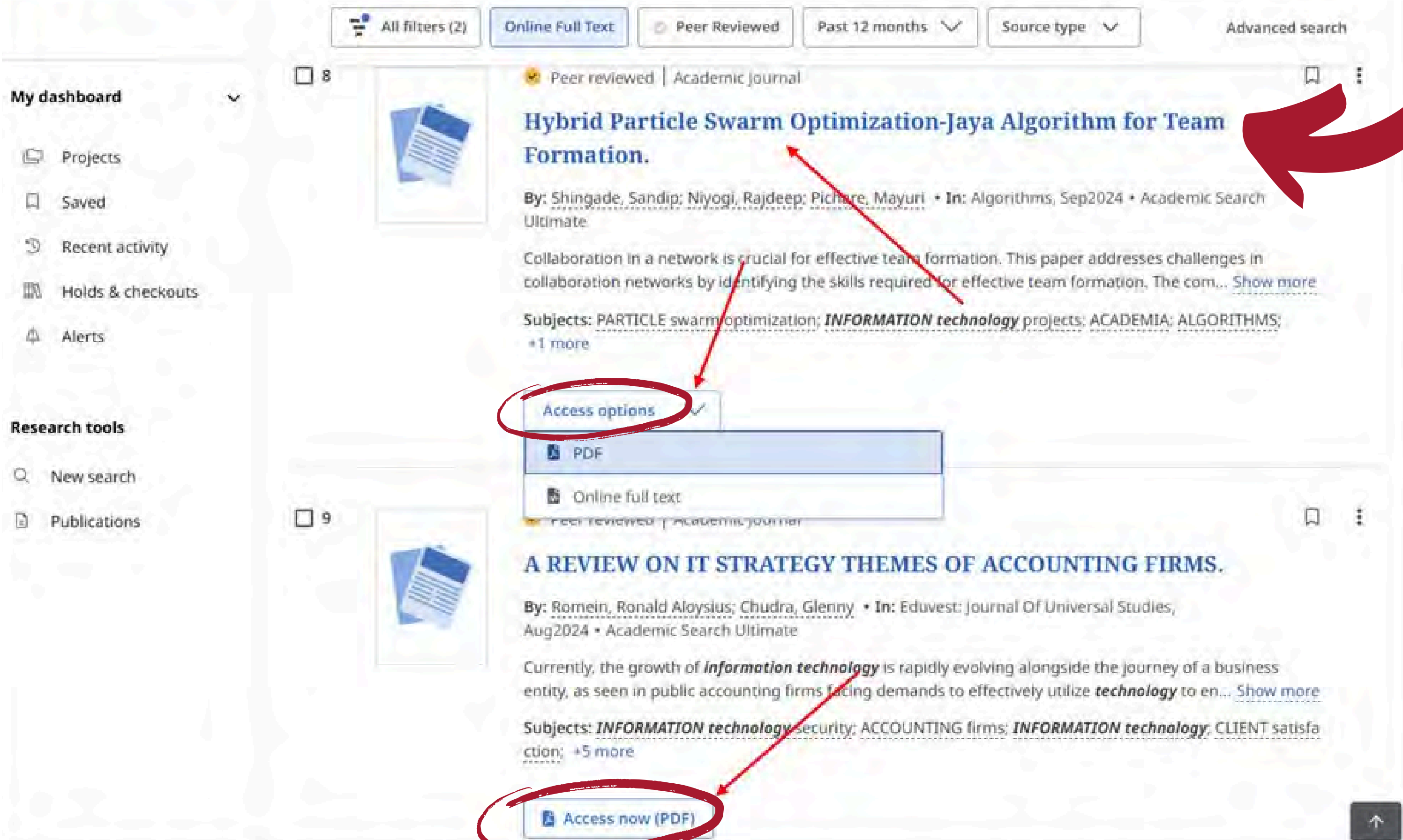
TO MANAGE MULTIPLE RESULTS, USE THE CHECKBOXES TO SELECT INDIVIDUAL ARTICLES IN THE RESULT LIST OR MARK THE CHECKBOX AT THE TOP OF THE RESULT LIST AND CLICK THE ARROW TO SELECT MULTIPLE RECORDS AT ONCE. THEN USE THE TOOLS ABOVE TO DOWNLOAD THE ARTICLE , SAVE THE ARTICLES TO THE DASHBOARD, ADD THEM TO A PROJECT, SHARE THEM VIA EMAIL OR GOOGLE, OR COPY OR EXPORT CITATIONS.



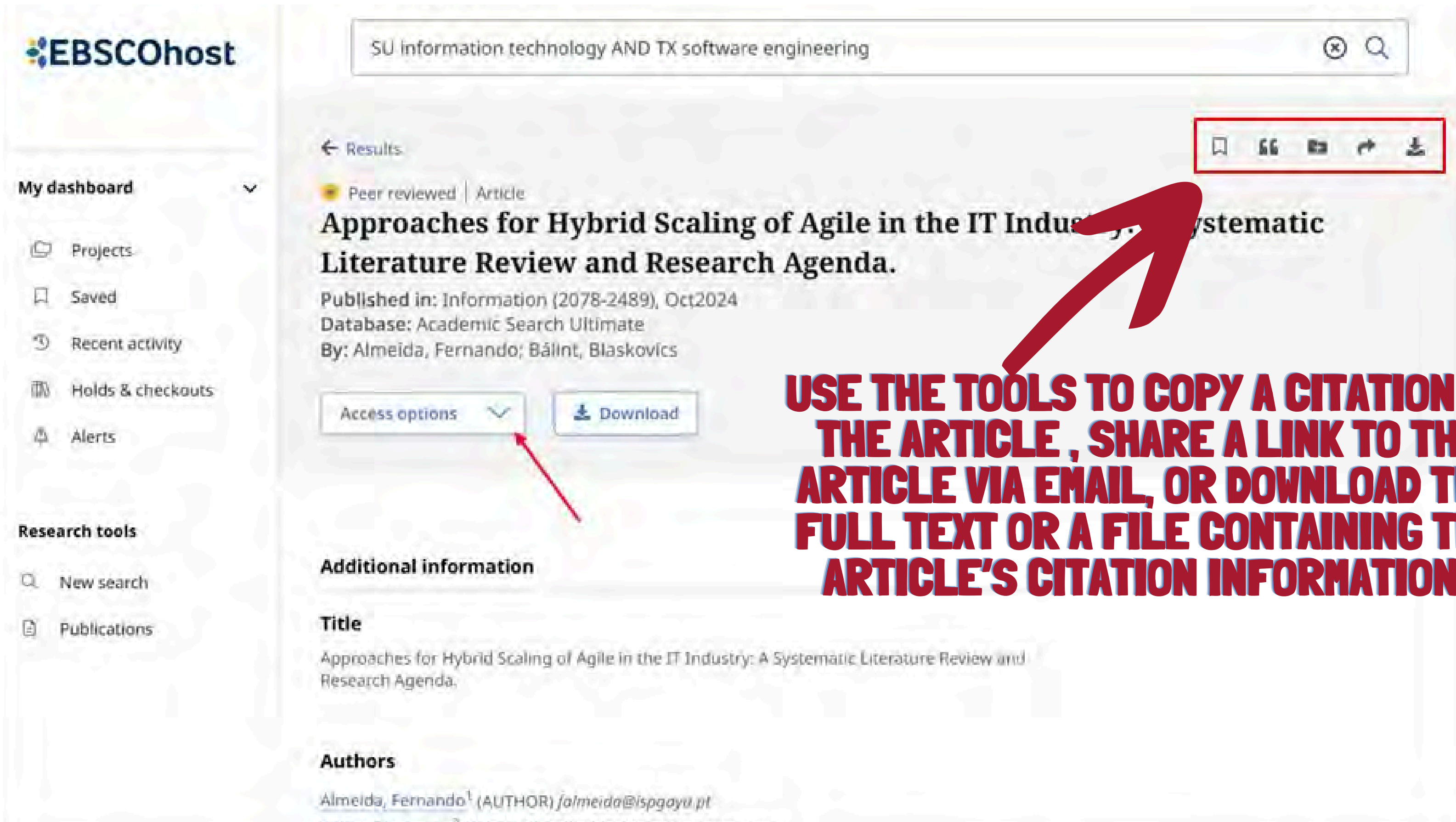
USE THE DROP-DOWN MENUS AT THE TOP OF YOUR RESULTS TO ADJUST THE NUMBER OF ARTICLES PER PAGE OR SORT YOUR RESULTS BY RELEVANCE OR DATE.



SELECT AN ARTICLE TO READ BY CLICKING THE ACCESS OPTIONS BUTTON AND SELECTING A FULL TEXT OPTION FROM THE MENU. IF ONLY ONE FULL TEXT OPTION IS AVAILABLE, THE ACCESS NOW BUTTON WILL DISPLAY THAT. TO VIEW MORE INFORMATION ABOUT AN ARTICLE, CLICK THE TITLE.



THE DETAILED RECORD INCLUDES AN ARTICLE'S CITATION INFORMATION AND LINKS TO FULL TEXT.



USE THE TOOLS TO COPY A CITATION OF THE ARTICLE , SHARE A LINK TO THE ARTICLE VIA EMAIL, OR DOWNLOAD THE FULL TEXT OR A FILE CONTAINING THE ARTICLE'S CITATION INFORMATION .

FROM THE ONLINE FULL TEXT VIEWER, YOU CAN SAVE OR CITE THE ARTICLE, SHARE, DOWNLOAD, OR PRINT IT. YOU CAN ALSO TRANSLATE THE FULL TEXT, OPEN OR CLOSE THE TABLE OF CONTENTS, OR LISTEN TO THE ARTICLE VIA TEXT TO SPEECH.

Approaches for Hybrid Scaling of Agile in the IT Industry: A Systematic Literature Review and Research Agenda.

Approaches for Hybrid Scaling of Agile in the IT Industry: A Systematic Literature Review and Research Agenda.

Published in: Information (2078-2489). Oct2024, Academic Search Ultimate

By: Almeida, Fernando; Bálint, Blaskovics

Agile methodologies, initially designed for the project level, face challenges when applied at enterprise levels where complex projects and diverse stakeholders are involved. To meet this challenge, several large-scale agile methodologies have been proposed. However, these approaches are not flexible enough or tailored to the needs of organizations, projects, and their teams. It is in this context that hybrid methodologies have emerged. This study aims to conduct a systematic literature review to trace the evolution of hybrid scaling of agile and characterize different approaches to implement it. This study starts by assessing 1509 studies through the use of the PRISMA 2020 framework and identifies 38 relevant studies in this field.

Table of contents

1. Introduction

2. Research Methodology

2.1. Methods

2.2. Phases and Quality Assessment

2.3. Inclusion and Exclusion Criteria

2.4. Databases and Search Strategy

2.5. Research Questions

3. Results

CLICK THE QUOTATION MARK ["] TO CITE.

🔖

“”

📄

🔄

📄

🖨️

🌐

☰

🎧

USE THE DROP DOWN MENU TO FIND THE CORRECT FORMAT, MOST LIKELY APA OR MLA. THEN COPY THE CITATION. YOU CAN PASTE IT INTO A DOCUMENT.

Cite

Journal Article, Review, English Abstract

[Methods for evaluating the frailty syndrome in elderly people with diabetes: an integrative review].

Batista, Thaysa de Aguiar; Lima, Isabelle Karine Ramos de; Arruda, Ilma Kruze Grande de; 2025

Copy citation

Export citation

Consult your library for more information on citing requirements from your instructor.

Select style:

ABNT (Brazilian National Standards)

ABNT (Brazilian National Standards)

AMA 11th Edition (American Medical Assoc.)

APA 7th Edition (American Psychological Assoc.)

Chicago 17th Edition (Author-Date)

Harvard

Harvard: Australian

Copy to clipboard

Cite

English Abstract

ing the frailty syndrome in betes: an integrative

a, Isabelle Karine Ramos de;

Export citation

e information on citing resources and follow specific ructor.

ABNT (Brazilian National Standards)

Chicago 17th Edition (Author-Date)

Harvard

Harvard: Australian

MLA 9th Edition (Modern Language Assoc.)

Chicago 17th Edition (Notes & Bibliography)

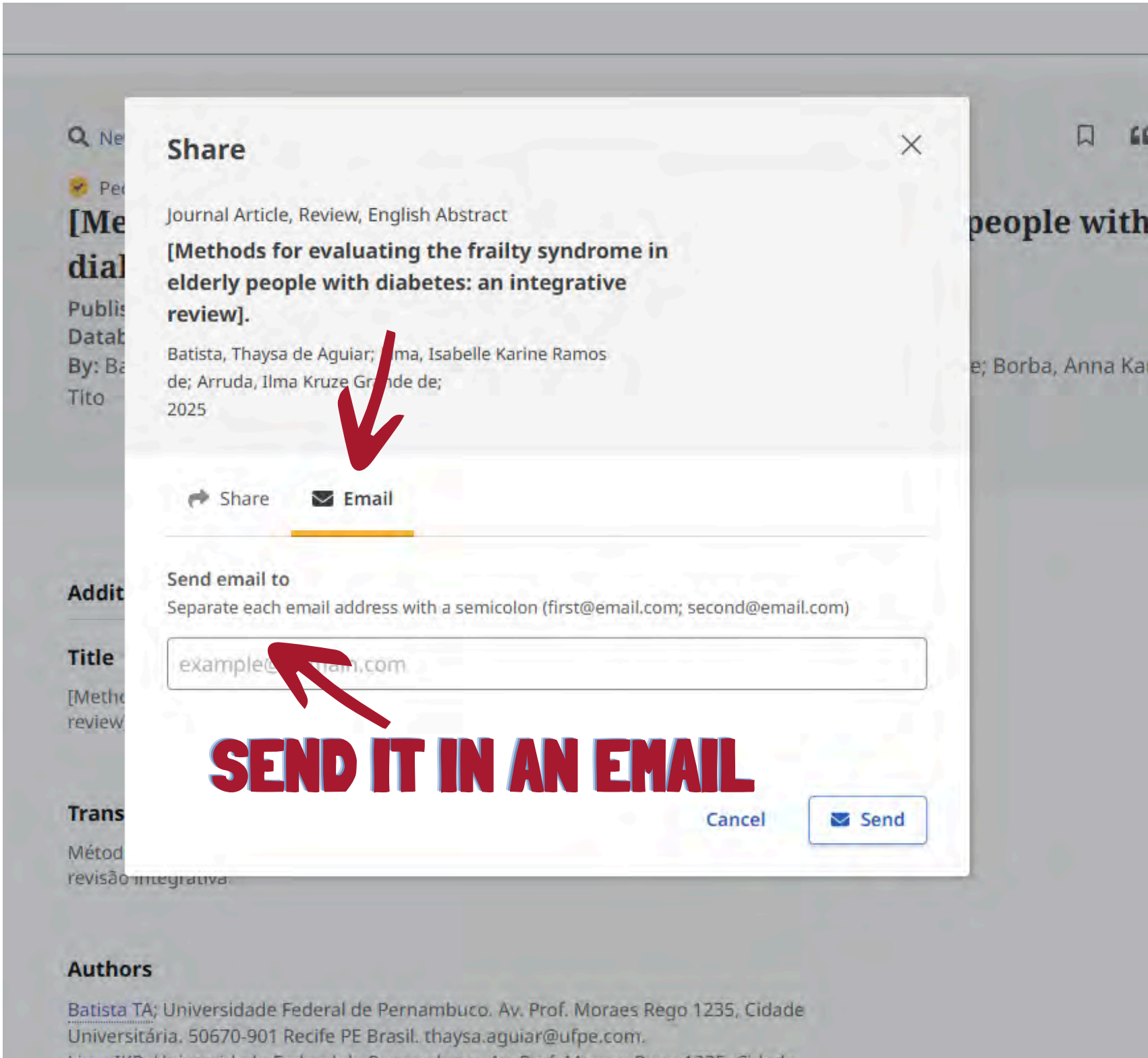
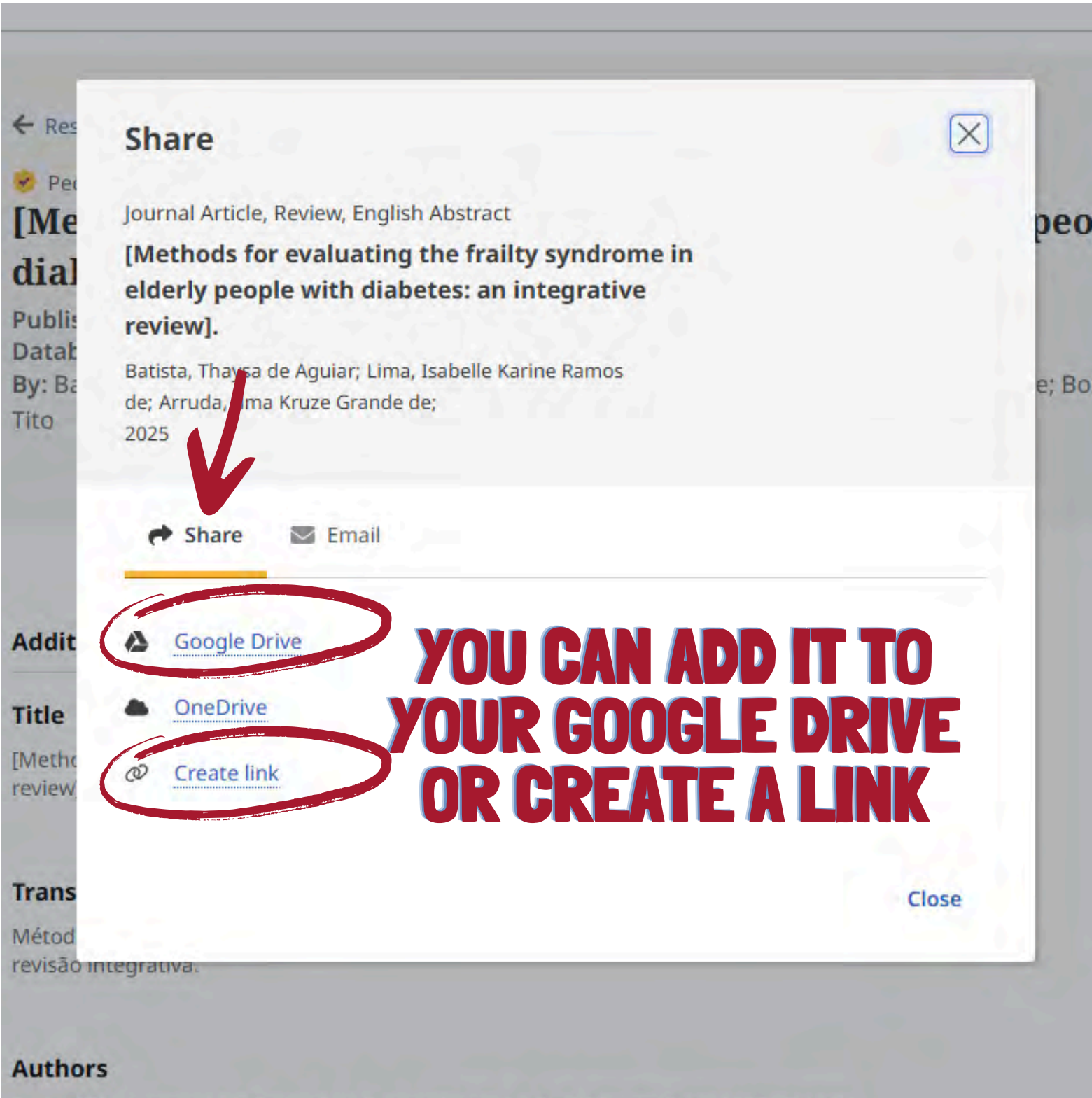
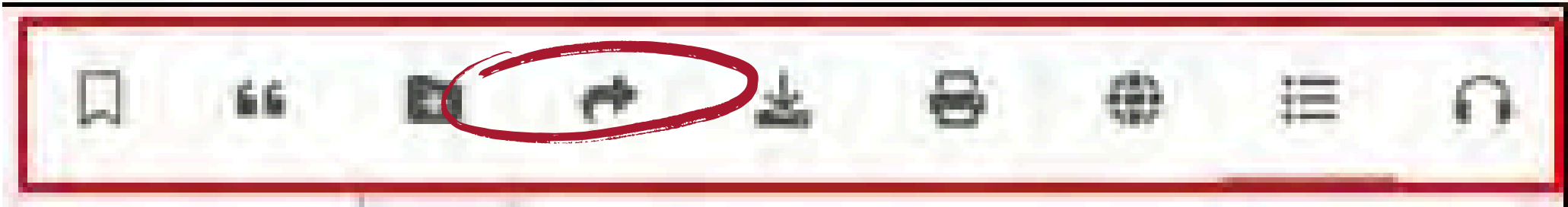
Vancouver/ICMJE

Copy to clipboard

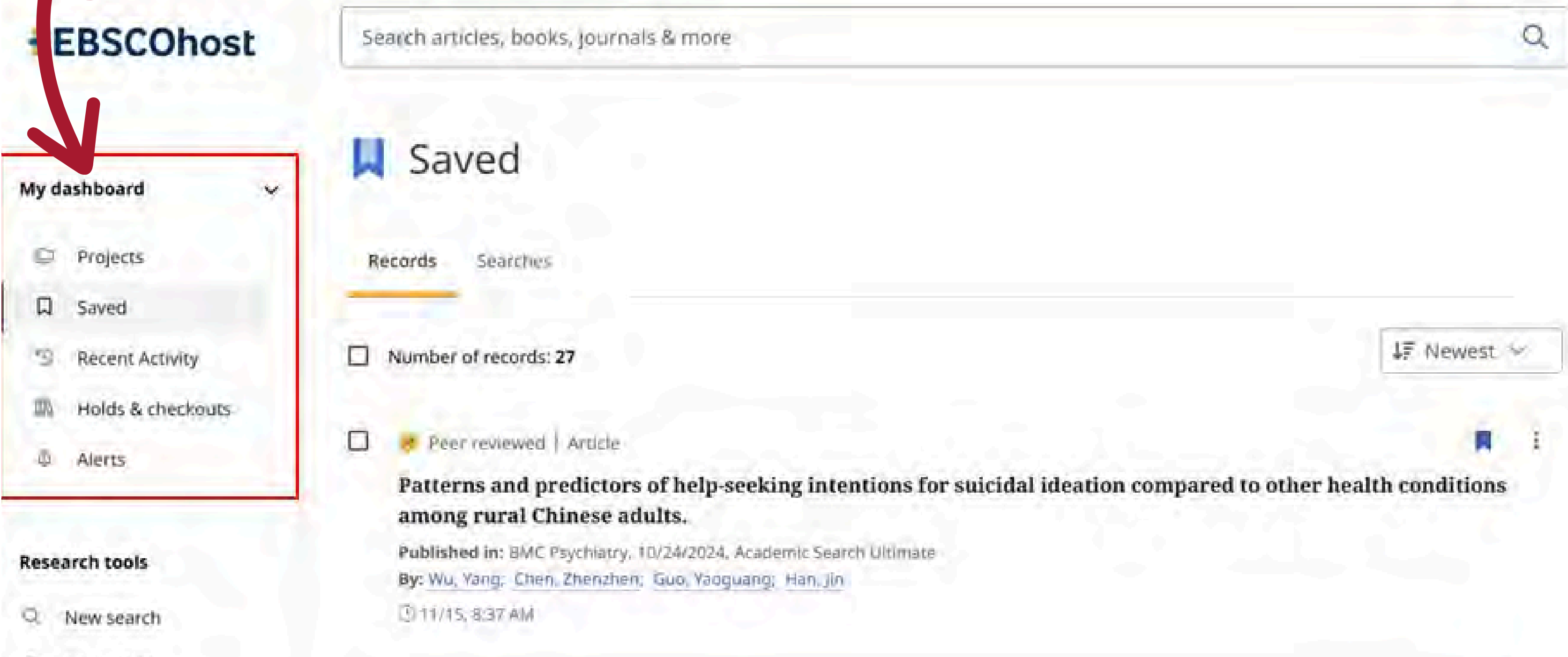
COPY THE CITATION AND PASTE IT INTO A DOCUMENT.

ALWAYS CHECK YOUR SYLLABUS OR ASSIGNMENT INFORMATION PROVIDED BY YOUR PROFESSOR FOR THE CORRECT FORMAT FOR EACH ASSIGNMENT.

CLICK THE ARROW TO SHARE OR EMAIL THE ARTICLE.



THE DASHBOARD IS WHERE YOU WILL FIND YOUR SAVED ITEMS AND PROJECTS. IF YOU ARE SIGNED IN THROUGH YOUR INSTITUTION AND NOT WITH A PERSONAL ACCOUNT, ITEMS IN YOUR DASHBOARD ARE NOT SAVED BEYOND YOUR CURRENT SESSION. YOU CAN CREATE YOUR OWN ACCOUNT BY CLICKING MYEBSCO AND THEN CLICKING THE CREATE AN ACCOUNT LINK.



EBSCO Connect



[Home](#)

[Product Information](#) ▾

[Learning](#)

[Tools & Resources](#) ▾

[Sign in](#)

Hello - How can we help?

- Q New EBSCOhost
- Q Introduction to the [New EBSCOhost](#) - Tutorial
- Q [New EBSCOhost](#) Transition Center
- Q The [New EBSCOhost](#) Interface - Quick Start Guide
- Q The [New EBSCOhost](#) - Frequently Asked Questions
- Q The [New EBSCOhost](#) Interface - Basic Search
- Q [New EBSCOhost](#) User Interface - Transition Checklist

Need Quick Help?

[EBSCO Status Alerts](#)

[How do I contact EBSCO Support?](#)

[International Support Resources](#)

[Forgot your Password?](#)

[Tutorials on EBSCO Interfaces](#)

[Name change of "Boolean/Phrase" search mode to "Proximity"](#)

[Product Help Updates for October 2024](#)

[Release Notes](#)

[VIEW ALL NEWS](#)

**To learn more about the New EBSCOhost,
visit EBSCO Connect at
<https://connect.ebsco.com>**

Do you have a question about the Library? Need help accessing a resource? Click on the button below to contact us!

Library Virtual Help Desk



IF YOU NEED HELP, CLICK “LIBRARY VIRTUAL HELP DESK.” COMPLETE AND SUBMIT THE FORM. THE LIBRARY DIRECTOR, ALICIA HOFFMAN, WILL EMAIL YOU AS SOON AS POSSIBLE.

CONTACT US DIRECTLY:

Alicia Hoffman
aghoffman@carlalbert.edu
918.647.1310

Tonya Sutton
tsutton@carlalbert.edu
918.647.1312

Front Desk: 918.647.1311