

HUMAX TECHNICAL DATA SHEET

HUMAX is an acrylic solid surface, the ideal material that combines practicality, durability, and elegance. It is the perfect material that enables you to create a one-of-a-kind design for limitless self-expression and design possibilities.

Specification	Test methods	Result
Water Absorption Coefficient	0.03% (24hrs) 1/2" Sheets	ASTM D570
Hardness Test	92 Rockell M Scale	ASTM D785
Hardness Test	63 Barcol Impressor	ASTM D2583
Pencil Hardness (HRM)	92	KS D 6711
Izod Impact Strength	.26ft-lbs/in of notch	ASTM D256
Tensile Strength	6500 psi	ASTM D638
Tensile Modulus	1.4 x 10 ⁹ PSI	ASTM D638
Ball Drop	>125" 1/2lb steel ball	NEMA LD-3
Flexural Strength	10000 psi	ASTM D790
Flexural Elastic Modulus	1.30 x 10 ⁹	ASTM D790
Elongation	0.73%	ASTM D638
Thermal Expanion Coef, (-C)	3.5 x 10 ⁻⁵	ASTM D696
Weatherability	No change - 1000 hours	ASTM D1499
Gloss (60 gardner)		NEMA LD-3
Colour Stability	No change - 200 hours	NEMA LD-3
Thermal Resistance	No change	NEMA LD-3
Boiling Water Resistance	No change	NEMA LD-3
Stain Resistance	Pass Rating 41	ANSI Z 124
Food Zone Acceptability	Accepted/Listed	NSF 51
Fungi and Bacteria	No Growth	ASTM G21
Specific Gravity - Solid Colours	1.74	
Specific Gravity - Other Colours	1.69	
Wear and Cleanability	Pass	
Flammability	Class 1	UBC 8-1
Flame Spread	0-25	ASTM E84
Smoke Density	<25	ASTM E84
Radiant Heat Resistance	No Visual Effect	



The flamboyance of beautiful textures sets the right tone of great decor ideas



email : info@humaxsurface.com | web : www.humaxsurface.com

HUMAX is a brand of Acrylic Solid surface of superlative quality, with a distributor network across India.

Composition : Humax Acrylic Solid Surfaces is manufactured with the combination of Acrylic Resin, fillers (minerals), coloured pigments, acrylic chips, Alumina trihydrate (ATH) and acrylic epoxy.

Features :-

1. Humax is non porous which makes it highly stain and moisture resistant, also does not allow bacteria growth making it hygienic.
2. Bendable - can take any shape by thermoforming process.
3. Seamless - joints are not visible irrespective of the shape.
4. Low maintenance - scratches can be removed with buffing & polishing.

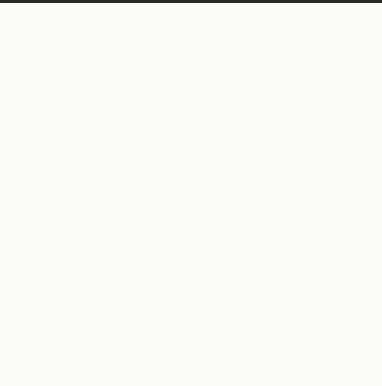
Application :-

1. Suitable for all types of projects - residential, commercial, offices and even hospitality sectors.
2. Very versatile application - vertical as well horizontal tops such as counter/table tops, wall paneling in hotels, at places as busy as airports (including check in & immigration counters) ; great option for operation theaters and medical counter tops in hospitals ; perfect for bathroom sinks & vanity counters and many more.

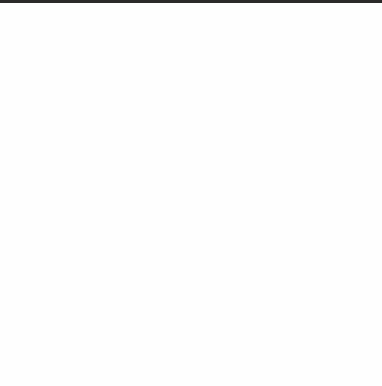
Cleaning :- It can be cleaned with mild liquid soap or wet cloth.

Size :- 2490mm*760mm*6mm | 3680mm*760mm*12mm

Thickness available :- 6mm and 12mm



HS 1006
A-1 WHITE



HS 1028
HIMALAYAN WHITE



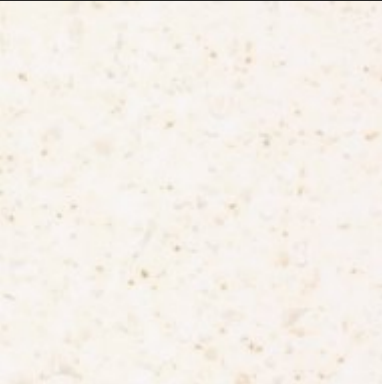
HG 1235
SOUTH POLE



HG 1034
NORTH POLE



HP 1001
STARRY WHITE



HG 1109
WEATHERED QUARTZ



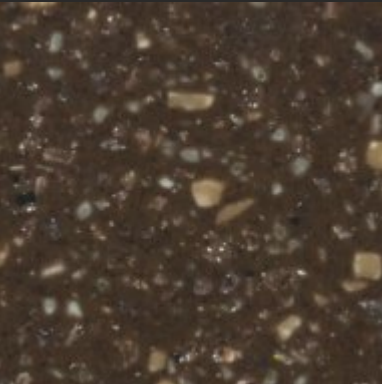
HG 1038
SHELL QUARTZ



HG 1048
DESERT MIST



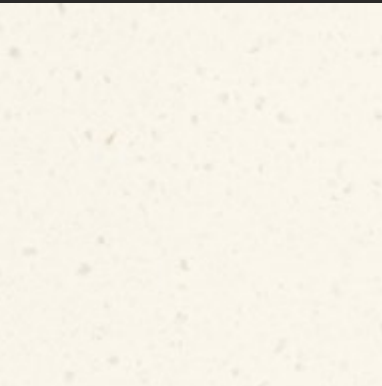
HG 1100
PEANUT QUARTZ



HG 1074
CHOCOLATE PECAN



HW 2001
ICE QUARTZ



HG 1101
BLEACHED QUARTZ



HG 1554
BLEACHED CONCRETE



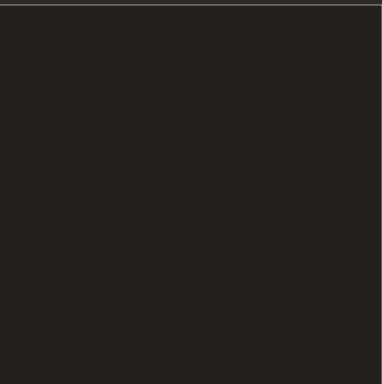
HG 1555
WEATHERED CONCRETE



HG 1138
GREY QUARTZ



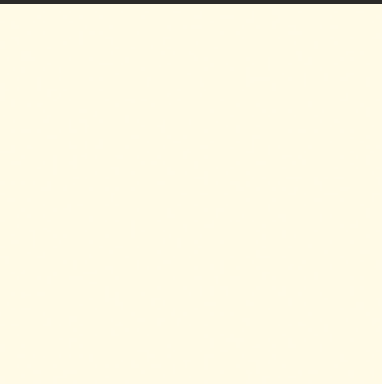
HG 1103
GREY CONCRETE



HS 1022
MIDNIGHT BLACK



HS 1025
BRIDE RED



HS 1009
SILK



HS 1104
CHOCOLATE MOUSSE