

Druckarmaturen AGN Gerade

Anschluss

NPTF Außengewinde konisch dichtend

Anwendung

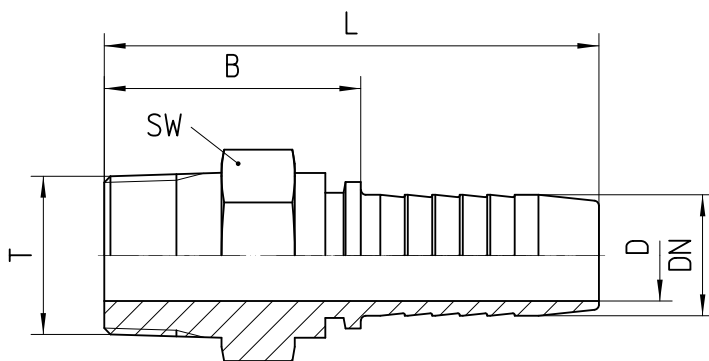
TE / SN / SC / SN-K / PTFE Schläuche

Werkstoff

Stahl

Oberfläche

galvanisch verzinkt



Bestell-Nr.	DN in mm	T in NPTF	SW in mm	min. D in mm	B±3 in mm	L±3 in mm
1.300-02-04	06	1/8-27 NPTF	12	4,0	22	50
1.300-04-04	06	1/4-18 NPTF	15	4,0	28	56

1.300-06-04	06	3/8-18 NPTF	19	4,0	28	56
1.300-04-05	08	1/4-18 NPTF	15	5,5	28	56
1.300-06-05	08	3/8-18 NPTF	19	5,5	28	56
1.300-04-06	10	1/4-18 NPTF	17	7,0	27	57
1.300-06-06	10	3/8-18 NPTF	19	7,0	28	58
1.300-08-06	10	1/2-14 NPTF	22	7,0	34	64
1.300-06-08	12	3/8-18 NPTF	19	7,0	44	75
1.300-08-08	12	1/2-14 NPTF	22	10,0	49	80
1.300-08-10	16	1/2-14 NPTF	22	13,0	40	74
1.300-12-10	16	3/4-14 NPTF	27	13,0	50	84
1.300-12-12	19	3/4-14 NPTF	27	15,0	42	81
1.300-16-12	19	1-11 1/2 NPTF	41	15,0	50	89
1.300-16-16	25	1-11 1/2 NPTF	41	21,0	50	96
1.300-16-20	31	1-11 1/2 NPTF	41	21,0	55	110
1.300-20-20	31	1 1/4-11 1/2 NPTF	46	27,0	67	121
1.300-24-24	38	1 1/2-11 1/2 NPTF	50	32,0	49	117
1.300-32-32	51	2-11 1/2 NPTF	65	44,5	56	131