

## Druckarmaturen DKJ Gerade

### Anschluss

Dichtkopf 74° Innenkonus mit UN Mutter

### Norm

ISO 8434-2

### Anwendung

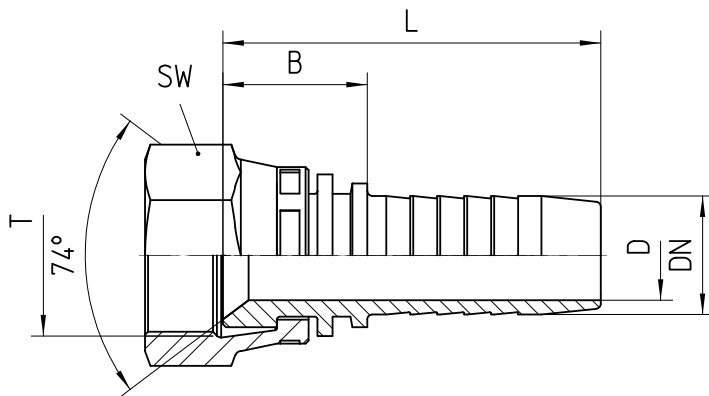
TE / SN / SC / SN-K / PTFE Schläuche

### Werkstoff

Stahl

### Oberfläche

galvanisch verzinkt



Bestell-Nr.	DN in mm	T in UNF/UN	SW in mm	min. D in mm	B±3 in mm	L±3 in mm
-------------	----------	-------------	----------	--------------	-----------	-----------

<b>1.313-04-04</b>	06	7/16-20 UNF	17	4,0	14	42
<b>1.313-05-04</b>	06	1/2-20 UNF	17	4,0	15	43
<b>1.313-04-05</b>	08	7/16-20 UNF	17	4,0	16	44
<b>1.313-05-05</b>	08	1/2-20 UNF	17	5,5	15	43
<b>1.313-06-05</b>	08	9/16-18 UNF	19	5,5	16	44
<b>1.313-05-06</b>	10	1/2-20 UNF	17	4,0	18	48
<b>1.313-06-06</b>	10	9/16-18 UNF	19	7,0	16	46
<b>1.313-08-06</b>	10	3/4-16 UNF	24	7,0	17	47
<b>1.313-06-08</b>	12	9/16-18 UNF	19	6,0	21	52
<b>1.313-08-08</b>	12	3/4-16 UNF	24	9,0	37	69
<b>1.313-10-08</b>	12	7/8-14 UNF	27	10,0	36	67
<b>1.313-08-10</b>	16	3/4-16 UNF	24	9,0	22	56
<b>1.313-10-10</b>	16	7/8-14 UNF	27	12,0	37	71
<b>1.313-12-10</b>	16	1 1/16-12 UN	32	13,0	45	79
<b>1.313-10-12</b>	19	7/8-14 UNF	27	12,0	40	79
<b>1.313-12-12</b>	19	1 1/16-12 UN	32	15,0	21	61
<b>1.313-16-12</b>	19	1 5/16-12 UN	38	15,0	22	62
<b>1.313-12-16</b>	25	1 1/16-12 UN	32	15,0	25	71
<b>1.313-16-16</b>	25	1 5/16-12 UN	41	21,0	24	70
<b>1.313-20-16</b>	25	1 5/8-12 UN	55	21,0	48	94
<b>1.313-16-20</b>	31	1 5/16-12 UN	41	21,0	50	104
<b>1.313-20-20</b>	31	1 5/8-12 UN	55	27,0	30	85
<b>1.313-24-20</b>	31	1 7/8-12 UN	60	27,0	47	102

<b>1.313-24-24</b>	38	1 7/8-12 UN	60	32,0	35	93
<b>1.313-32-32</b>	51	2 1/2-12 UN	75	44,5	39	114