

## Druckarmaturen SFS Gerade

### Anschluss

SAE-Flansch 6000PSI (S-Reihe)

### Norm

ISO 6162-2

### Anwendung

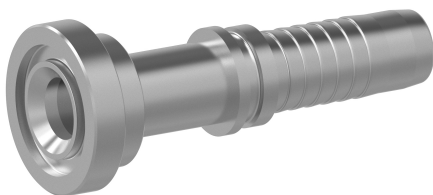
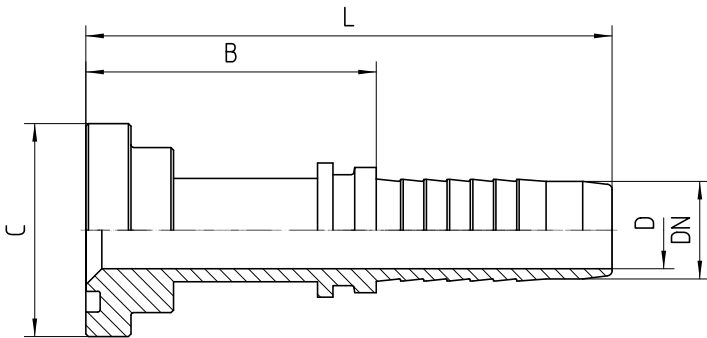
3SPC / 4SP Schläuche / 4SH19 / 4SH25

### Werkstoff

Stahl

### Oberfläche

galvanisch verzinkt



Bestell-Nr.	DN in mm	Flansch in Zoll	C in mm	min. D in mm	B±3 in mm	L±3 in mm
4.421-08-08	12	1/2	31,7	9,0	51	89

<b>4.421-12-08</b>	12	3/4	41,3	9,0	53	91
<b>4.421-08-10</b>	16	1/2	31,7	12,0	53	95
<b>4.421-12-10</b>	16	3/4	41,3	12,0	50	92
<b>4.421-08-12</b>	19	1/2	31,7	14,0	56	102
<b>4.421-12-12</b>	19	3/4	41,3	14,8	56	102
<b>4.421-16-12</b>	19	1	47,6	14,8	55	101
<b>4.421-12-16</b>	25	3/4	41,3	19,9	54	109
<b>4.421-16-16</b>	25	1	47,6	19,9	57	112
<b>4.421-20-16</b>	25	1 1/4	54,0	19,9	58	113