

## Druckarmaturen SFS Gerade

### Anschluss

SAE-Flansch 6000PSI (S-Reihe)

### Norm

ISO 6162-2

### Anwendung

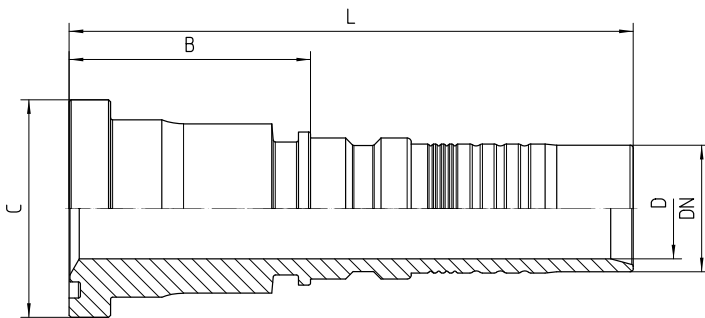
4SH / R15 / R13 (DN51) Schläuche

### Werkstoff

Stahl

### Oberfläche

galvanisch verzinkt



Bestell-Nr.	DN in mm	Flansch in Zoll	C in mm	min. D in mm	B±3 in mm	L±3 in mm
7.421-12-12	19	3/4	41,3	15,0	54	110

<b>7.421-16-12</b>	19	1	47,6	15,0	59	115
<b>7.421-12-16</b>	25	3/4	41,3	20,0	54	121
<b>7.421-16-16</b>	25	1	47,6	20,0	58	125
<b>7.421-20-16</b>	25	1 1/4	54,0	20,0	60	127
<b>7.421-16-20</b>	31	1	47,6	25,0	91	171
<b>7.421-20-20</b>	31	1 1/4	54,0	25,0	60	140
<b>7.421-24-20</b>	31	1 1/2	63,5	25,0	99	162
<b>7.421-20-24</b>	38	1 1/4	54,0	30,0	124	190
<b>7.421-24-24</b>	38	1 1/2	63,5	30,0	107	173
<b>7.421-24-32</b>	51	1 1/2	63,5	37,0	108	214
<b>7.421-32-32</b>	51	2	79,4	40,0	101	192