

Druckarmaturen DKJ Gerade

Anschluss

Dichtkopf 74° Innenkonus mit UN Mutter

Norm

ISO 8434-2

Anwendung

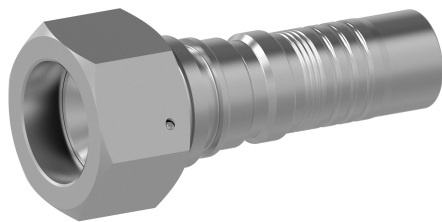
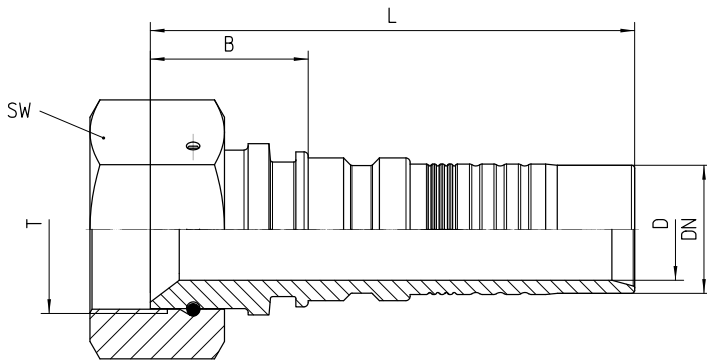
4SH / R15 / R13 (DN51) Schläuche

Werkstoff

Stahl

Oberfläche

galvanisch verzinkt



Bestell-Nr.	DN in mm	T in UN	SW in mm	min. D in mm	B±3 in mm	L±3 in mm
-------------	----------	---------	----------	--------------	-----------	-----------

7.313-12-12	19	1 1/16-12 UN	32	15	27	83
7.313-16-16	25	1 5/16-12 UN	41	20	30	96
7.313-20-20	31	1 5/8-12 UN	55	25	39	119
7.313-24-24	38	1 7/8-12 UN	60	30	37	129
7.313-32-32	51	2 1/2-12 UN	75	40	46	137