

## Druckarmaturen AGN Gerade

### Anschluss

NPT Außengewinde konisch dichtend

### Anwendung

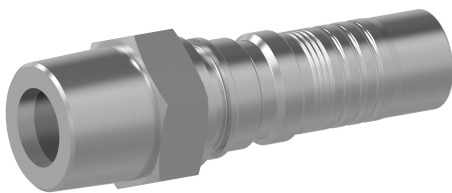
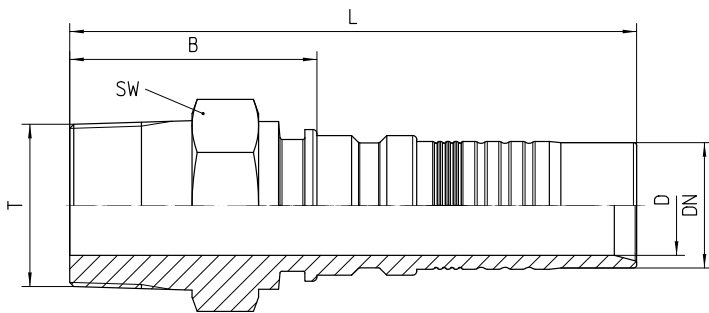
4SH / R15 / R13 (DN51) Schläuche

### Werkstoff

Stahl

### Oberfläche

galvanisch verzinkt



Bestell-Nr.	DN in mm	T in NPTF	SW in mm	min. D in mm	B±3 in mm	L±3 in mm
7.300-12-12	19	3/4"-14	27	15,0	44	100
7.300-16-16	25	1" -11.1/2	36	20,0	51	118

<b>7.300-20-20</b>	31	1 1/4"-11.1/	46	25,0	62	142
<b>7.300-24-24</b>	38	1 1/2"-11.1/2	55	30,0	59	150
<b>7.300-32-32</b>	51	2"-11.1/2	65	40,0	64	155