

Druckarmaturen SFL Gerade

Anschluss

SAE-Flansch 3000PSI (L-Reihe)

Norm

ISO 6162-1

Anwendung

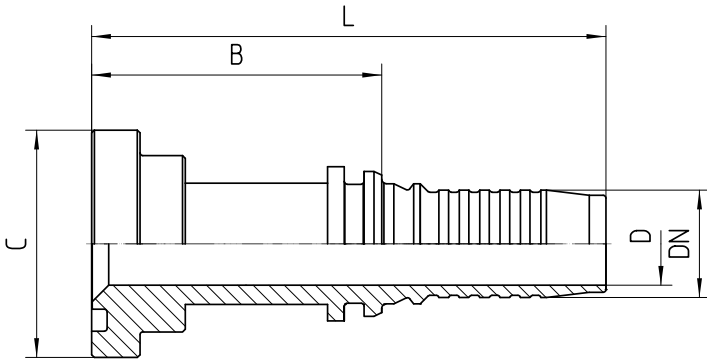
4SH Schläuche

Werkstoff

Stahl

Oberfläche

galvanisch verzinkt



| Bestell-Nr. | DN in mm | Flansch in Zoll | C in mm | min. D in mm | B±3 in mm | L±3 in mm | Hinweis |
|-------------|----------|-----------------|---------|--------------|-----------|-----------|---------|
| 5.420-08-12 | 19 | 1/2 | 30,2 | 13,5 | 51 | 92 | |
| 5.420-12-12 | 19 | 3/4 | 38,1 | 14,8 | 52 | 93 | |
| 5.420-16-12 | 19 | 1 | 44,5 | 14,8 | 52 | 93 | |
| 5.420-12-16 | 25 | 3/4 | 38,1 | 20,0 | 56 | 108 | * |
| 5.420-16-16 | 25 | 1 | 44,5 | 20,0 | 56 | 108 | * |
| 5.420-20-16 | 25 | 1 1/4 | 50,8 | 20,0 | 55 | 107 | * |
| 5.420-16-20 | 31 | 1 | 44,5 | 25,0 | 60 | 129 | |
| 5.420-20-20 | 31 | 1 1/4 | 50,8 | 25,0 | 59 | 128 | |
| 5.420-24-20 | 31 | 1 1/2 | 60,3 | 25,0 | 61 | 130 | |
| 5.420-20-24 | 38 | 1 1/4 | 50,8 | 26,0 | 60 | 129 | |
| 5.420-24-24 | 38 | 1 1/2 | 60,3 | 30,0 | 62 | 131 | |
| 5.420-32-24 | 38 | 2 | 71,4 | 30,0 | 62 | 131 | |
| 5.420-24-32 | 51 | 1 1/2 | 60,3 | 30,0 | 76 | 145 | |
| 5.420-32-32 | 51 | 2 | 71,4 | 40,0 | 79 | 144 | |

Hinweis

* geänderte Kontur aus sicherheitsrelevanten Gründen, daher Maßabweichungen vom marktüblichen System

Zubehör

- O-Ring SAE-Flansch