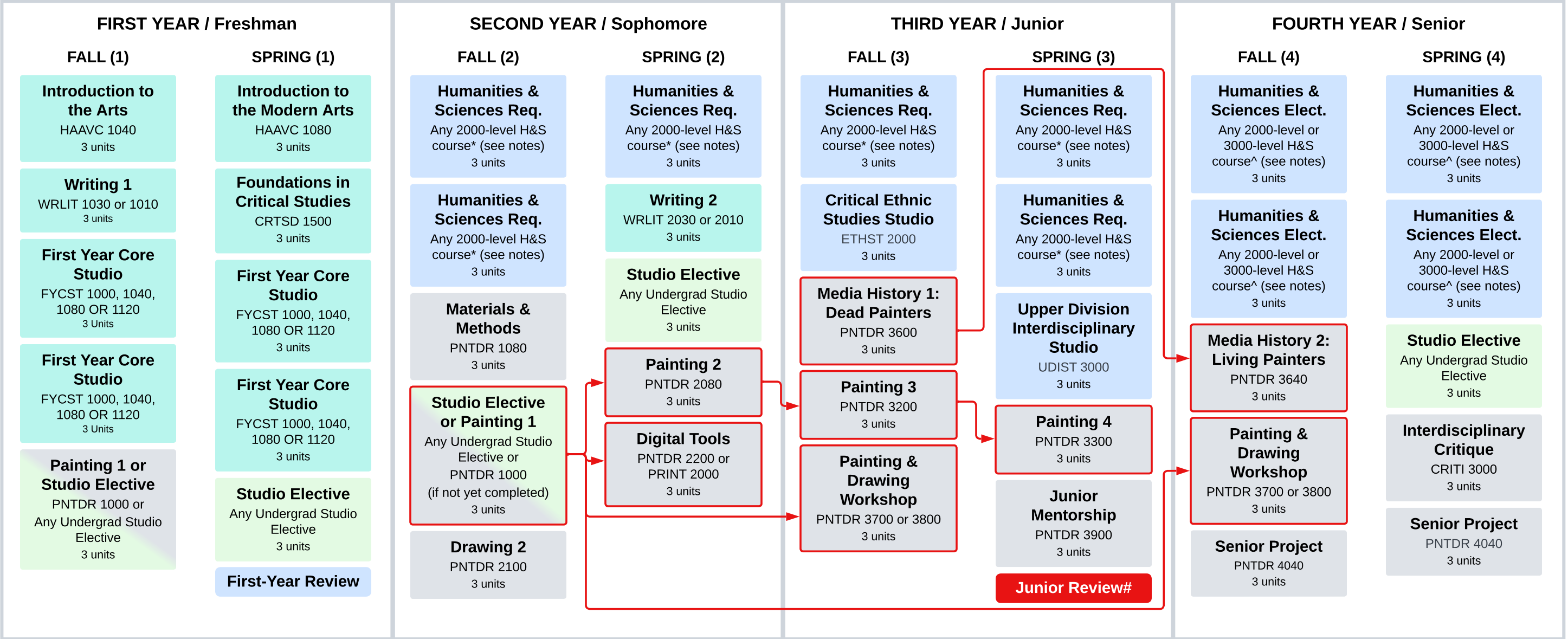


COURSE GUIDE

# PAINTING & DRAWING (BFA)

This chart outlines a recommended path towards graduation for students matriculating in Fall 2025 or Spring 2026. Students build each semester's schedule based on their remaining requirements found in Workday Student.



- Foundational Curriculum\*
- Studio Elective / Intro to Major
- College-wide Curriculum
- Program-specific Curriculum\*

 Program Pre-requisite Program Co-requisite Program Pre- or Co-requisite

\*Foundational and Program-Specific Curricula must be completed with a grade of C or better.

**Pre-requisites and co-requisites are shown as general guidelines for program-specific courses and this chart may not include all components of a course's eligibility rule. Eligibility requirements are not shown for Foundational or College-wide curricula. Students should check Workday for all eligibility requirements and consult with Academic Advising as needed.**

**NOTES:**  
**\*Humanities & Sciences Requirements, 2000-level:** Painting & Drawing students complete 3 units at the 2000-level from each of the six Humanities & Sciences Categories: ETHSM, HAAVC, LITPA, PHCRT, SSHIS, SCIMA.  
**^Humanities & Sciences Electives, 2000- or 3000-level:** In addition to the Humanities & Sciences Requirements, Painting & Drawing students complete four additional Humanities & Sciences courses which are chosen from among the six Humanities & Sciences Categories. At least two of the courses (6 Units) must be at the 3000-level.  
**~First-Year Review:** Painting & Drawing students participate in First-Year Review in the Spring semester as a capstone event of their First-Year experience.  
**#Junior Review:** Animation students must complete a Junior Portfolio Review during the second semester of their Third Year to continue on to their Fourth Year.