



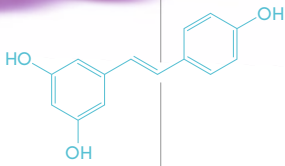
# memophenol™

TRUST YOUR MEMORY

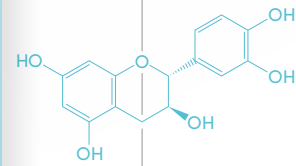


- > COGNITIVE PERFORMANCE
- > MEMORY
- > COGNITIVE DECLIN PREVENTION

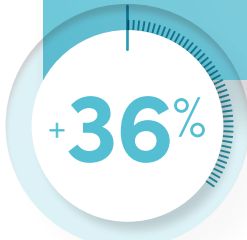
Source of essential polyphenols for neuro-protection.



> French Grape\*  
*Vitis vinifera L.*



> Wild Blueberry\*  
*Vaccinium angustifolium A.*



in one shot **+36%** cognitive performance, only 90 minutes after supplementation



rejuvenate **+10** years of memory, after 6 months of continuous use



students have better concentration capacities



- > Felt effect in **1h30**
- > **Scientific results validated** by approved health claim in South Korea and highest Impact factor revue (JAMA).
- > Innovative story based on **epidemiological studies**



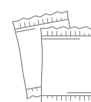
**UE - EFSA PENDING CLAIM:** "Memophenol™ provides grape pomace extract, which improves mental function and performance"



**US CLAIM:** "Clinical research to support brain function / health"  
"Clinical research suggests that Memophenol™ help with cognitive performance while taking an exam" - Report edited by Venable



**SOUTH KOREA:** Proprietary health claim "Memophenol™ may help to improve memory"



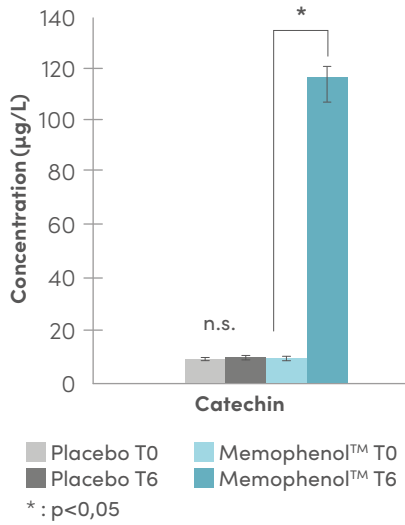
Daily dose : 300 à 600 mg

\*Twice patented neuro nutriments with synergic and direct action on brain.

✓ **Mechanisms of action** **PUBLISHED**

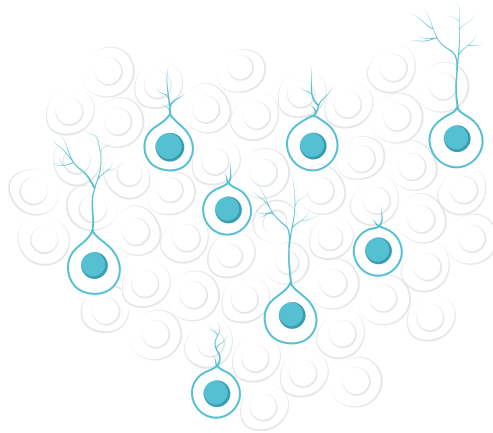
**BIOAVAILABILITY**

Proven : Memophenol™ crosses the blood-brain barrier and its bioavailability is confirmed in humans.



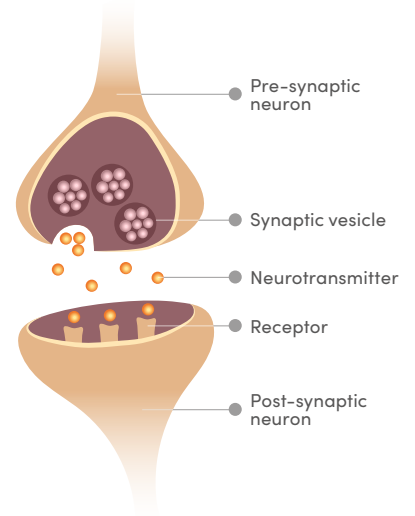
**NEUROGENESIS**

**+19% of mature neurons**



**SYNAPTIC PLASTICITY**

**+11% of connections**

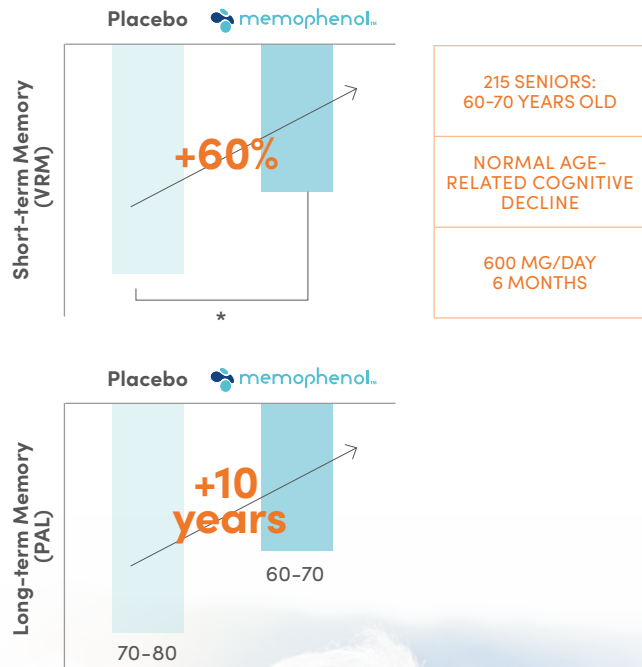


✓ **Clinical and scientific evidence** **PUBLISHED**

**ON SENIORS**

**MULTICENTRIC CLINICAL STUDY**

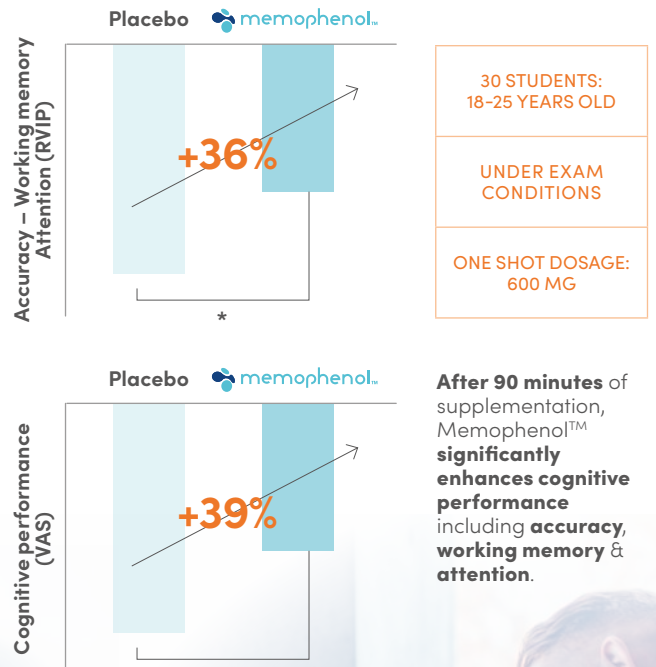
Randomized double blind placebo controlled



**ON STUDENTS**

**CROSSOVER CLINICAL STUDY**

Randomized double blind placebo controlled



After 90 minutes of supplementation, Memophenol™ significantly enhances cognitive performance including accuracy, working memory & attention.



**For more information :**  
Activ'Inside

ZA du Grand Cazau - 33750 Beychac et Caillau  
Bordeaux Area - FRANCE

**+33(0)535 541 560 - formore@activinside.com**