



FRITADEIRA FF15TR NV

FRYER FF15TR NV



FRITADEIRA FF15TR NV FIAMMA - 2.0.091.1000

FRYER FF15TR NV FIAMMA

POTÊNCIA 7500 W
POWER

TENSÃO DE ALIMENTAÇÃO 400-3N V(~)-50Hz
POWER SUPPLY

TERMOSTATO REGULÁVEL 90-180 °C
ADJUSTABLE THERMOSTAT

PRODUTIVIDADE 20 kg/h
PRODUCTIVITY

PESO LIQUIDO 10,8 kg
NET WEIGHT

PESO BRUTO 12,3 kg
GROSS WEIGHT

DIMENSÕES (LxPxH) 325x500x412 mm
DIMENSIONS (LxPxH)

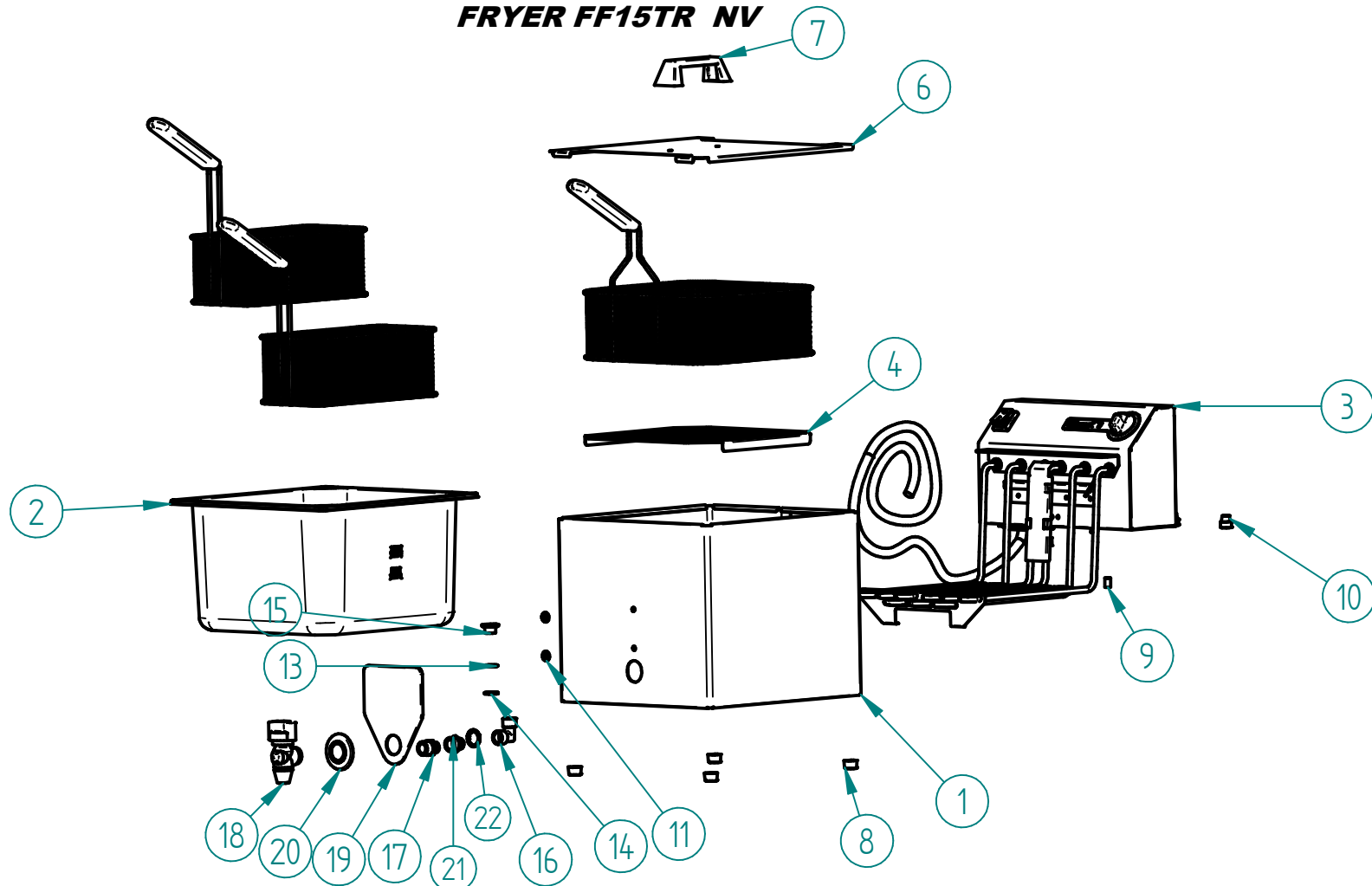
DIMENSÕES DA EMBALAGEM (LxPxH) 370x545x445 mm
PACKAGE DIMENSIONS

DIMENSÕES DO CESTO (LxPxH) 276x276x104 mm
BASKET DIMENSIONS

CAPACIDADE DE ÓLEO 10 L
OIL CAPACITY

FRITADEIRA FF15TR NV

FRYER FF15TR NV



LISTA DE COMPONENTES E ACESSÓRIOS

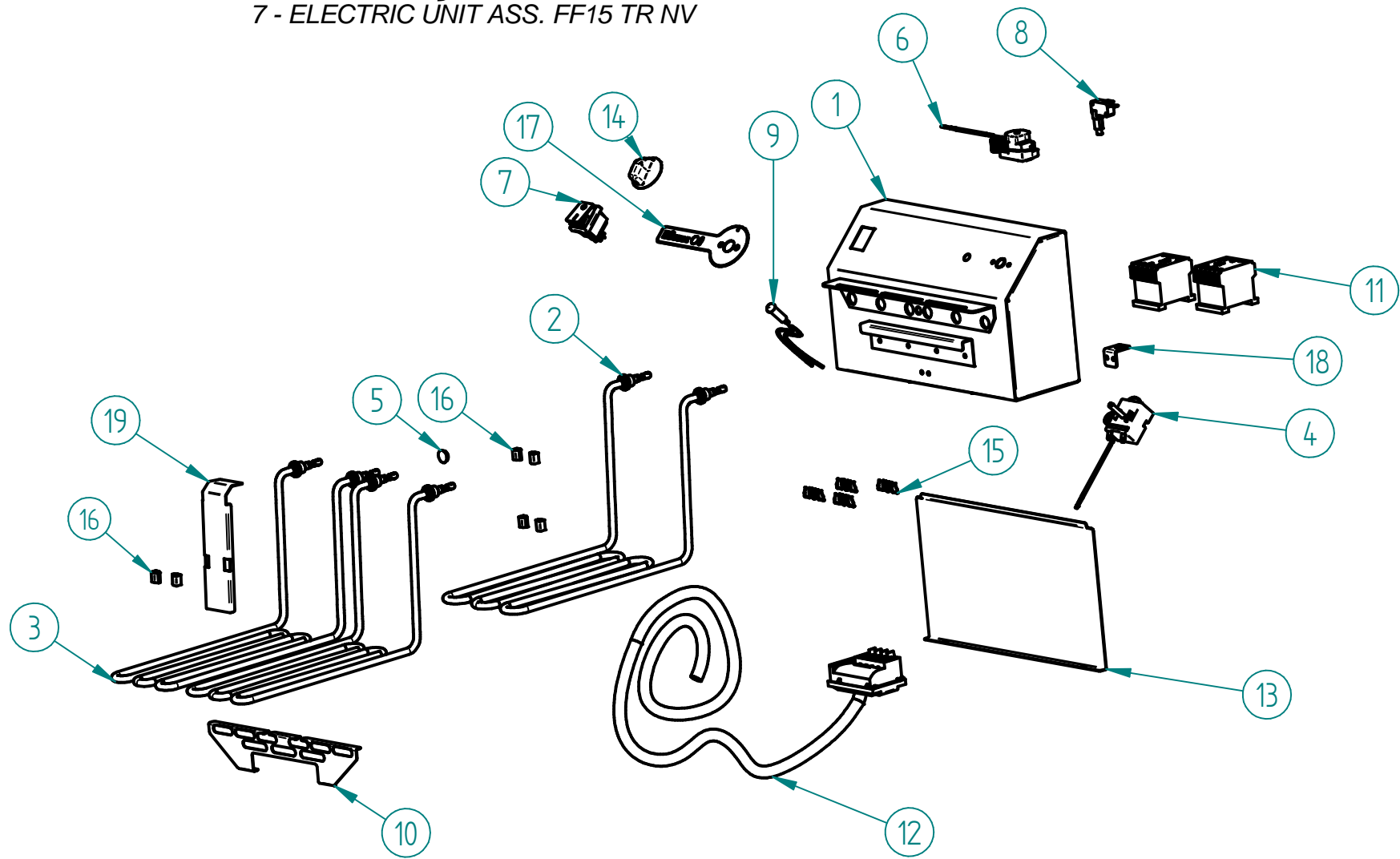
MEM. N°	CODIGO	DESIGNAÇÃO	DESIGNATION	QUANT.
1	7.0.091.1105	BLINDAGEM CONJUNTO FF15TR NV	SHIELDS ASS. FF15 TR REBIT.	1
2	7.0.091.1061	CUBA GN2/3 H200MM ESTAMP. FF15 TR NV	TANK GN2/3 H200MM FF15 TR NV ESTAMP.	1
3	7.0.091.1000	CABEÇOTE MONTADO FF15TR NV	ELECTRIC UNIT ASS. FF15 TR NV	1
4	7.0.091.1070	GRELHA PROTECÇÃO RESIST. FF15TR NV	HEATING ELEMENT PROTECTION GRID	1
5*	4.0.091.1031	CESTO GN2/3 H104MM FF15 TR NV	FF15 TR NV GN2/3 H104MM BASKET	1
6	7.0.091.1060	TAMPA CUBA FF15TR NV	TANK COVER FF15 TR NV	1
7	4.1.000.6220	PEGADEIRA REF. 58 EM PVC	PVC HANDGRIP	1
8	4.2.000.9246	BATENTE PRETO Nº2	BLACK KNOCKER NR. 2	4
9	4.0.028.0035	CASQUILHO GUIA TAB. SUP. PACIFIC	BUSHING GUIDE TRAY TOP PACIFIC	1
10	4.0.085.0028	MANIPULO RECARTEILHADO M5	HANDLE (M5)	2
11	4.0.087.0040	ANILHA FIXAÇÃO RAPIDA 6MM	FIXING RING 6MM	2
12*	4.0.091.1033	CESTO GN1/3 H104MM FF15 TR NV	FF15 TR NV GN1/3 H104MM BASKET	2
13	4.0.160.0036	ORING CASQUILHO CUBA 17x2 TLF	TLF CONTAINER 17X2 ORING BUSHING	1
14	5.0.025.1386	JUNTA TEFLON 21X16,8X2	TEFLON GASKET	1
15	4.0.091.1015	RACORD CUBA GN 2/3 FF15 TR NV	FF15 TR NV GN 2/3 CONTAINER RACORD	1
16	4.0.091.1019	RACORD L G3/8F-G3/8F NIQ.	G3/8F-G3/8F NIQ. L RACORD	1
17	4.0.091.1017	RACORD G1/2-G3/8 NIQ.	G1/2-G3/8 NIC. RACORD	1
18	4.0.087.0030	TORNEIRA G1/2F	TAP G1/2F	1
19	4.0.087.0034	PROTECÇÃO TERMICA TORNEIRA FF	THERMIC TAP PROTECTION	1
20	4.0.087.0032	ESPELHO CROMADO 3/4"	CHOMED MIRROR 3/4"	1
21	4.0.091.1021	RACORD G3/8-G3/8F NIQ.	RACORD G3/8-G3/8F	1
22	4.0.000.0011	ANILHA 20X26MM (G1/2) COBRE	GASKET G1/2 CU	1

FRITADEIRA FF15TR NV

FRYER FF15TR NV

7 - CABEÇOTE MONTADO FF15 TR NV - 7.0.091.1000

7 - ELECTRIC UNIT ASS. FF15 TR NV



LISTA DE COMPONENTES E ACESSÓRIOS

Spare parts list

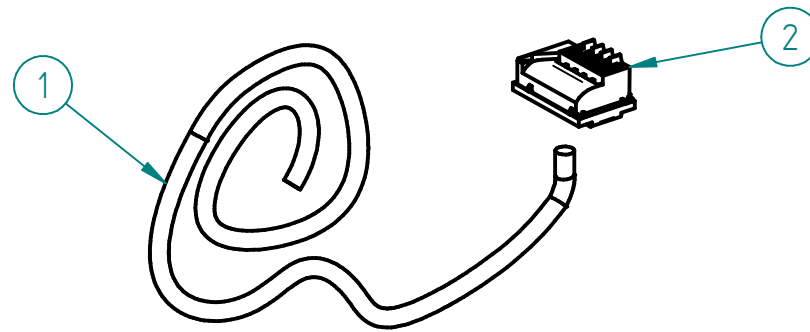
ITEM Nº	CÓDIGO	DESIGNAÇÃO	DESIGNATION	QUANT.
1	7.0.091.1025	CASTELO CONJUNTO FF15TR NV	ELECTRIC UNIT SHIELD	1
2	4.0.091.1005	RESISTENCIA INFERIOR 2500W 230V FF15 TR NV	LOWER HEATING ELEMENT 2500W 230V FF15 TR NV	1
3	4.0.091.1004	RESISTENCIA SUPERIOR 2500W 230 V FF15 TR NV	UPPER HEATING ELEMENT 2500W 230V FF15 TR NV	2
4	4.0.085.0008	TERMOSTATO REGULAVEL 175°	ADJUSTABLE THERMOSTAT 175°C	1
5	4.0.085.0035	TAPA FUROS Ø10MM	RUBBER COVER Ø10MM	1
6	4.0.085.0011	TERMOSTATO SEGURANÇA 230°	SAFETY THERMOSTAT 230°C	1
7	4.0.085.0018	INTERRUPTOR LARANJA 0-1 IP65	ORANGE SWITCH	1
8	4.0.085.0021	MICRO INTERRUPTOR RLP/A	MICRO SWITCH RLP/A	1
9	4.0.085.0022	SINALIZADOR LARANJA TER. PONT. 250MM SL10207	ORANGE LED 250MM	1
10	7.0.091.1065	SEPARADOR RESISTENCIA FF15TR NV	HEATING ELEMENT ISOLATOR FF15TR NV	1
11	4.0.091.0003	CONTACTOR 22A-AC1 BOBINE 230V	CONTACTOR 22A-AC1 230V	2
12	7.0.091.0080	CABO H07RN-F 5G2,5-2,0MT S/ FICHA+CC	FEEDING CABLE ASS. FF15 TR	1
13	7.0.091.0050	TAMPA CASTELO FF15TR	ELECTRIC UNIT SHIELD COVER FF15TR	1
14	4.0.075.0040	MANIPULO TEMPORIZADOR	BUTTON	1
15	4.0.085.0114	MOLA ARAME P/ BOLBO	SPRING	4
16	4.0.085.0017	MOLA P/ CAPILARES	WIRE SPRING	6
17	4.0.190.0050	PAINEL PERSONALIZADO FIAMMA FCF	STICKER FCF FIAMMA	1
18	7.0.085.1026	FIXADOR MICRO INTERRUPTOR FF NV	MICRO SWITCH FIXER	1
19	7.0.085.1067	BLINDAGEM CAPILARES FF NV	CAPILLARY SHIELD FF NV	1

FRITADEIRA FF15TR NV

FRYER FF15TR NV

12 - CABO SECTOR CONJ. FF15 TR (AD030T) - 7.0.091.0080

12 - FEEDING CABLE ASS. FF15 TR



ITEM Nº	CÓDIGO	DESIGNAÇÃO	DESIGNATION	QUANT.
1	4.0.091.0010	CABO H07RN-F 5G2,5	H07RN-F 5G2,5 CABLE	1
2	4.0.089.0014	CERRA CABOS AD030T	CABLE FASTENER	1

ESQUEMA ELECTRICO

Electric Scheme

